

Washington & Stober

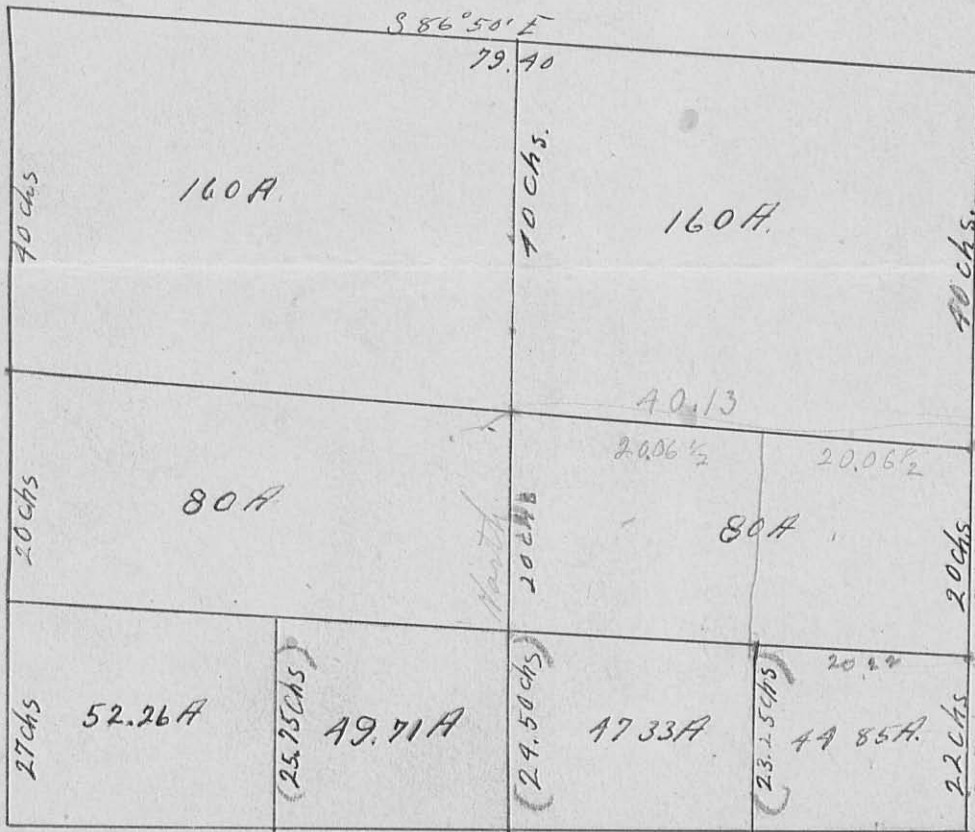
(1040) 1P

Sec 35 T6 R8

246  
22  
2(765)  
2325  
22  
2(4325)  
226230  
43000

246  
22  
2(765)  
2325  
22  
2(4325)  
226230  
43000

246  
22  
2(765)  
2325  
22  
2(4325)  
226230  
43000



State Mon.  
Trotter  
12' N of Road  
stone on top.