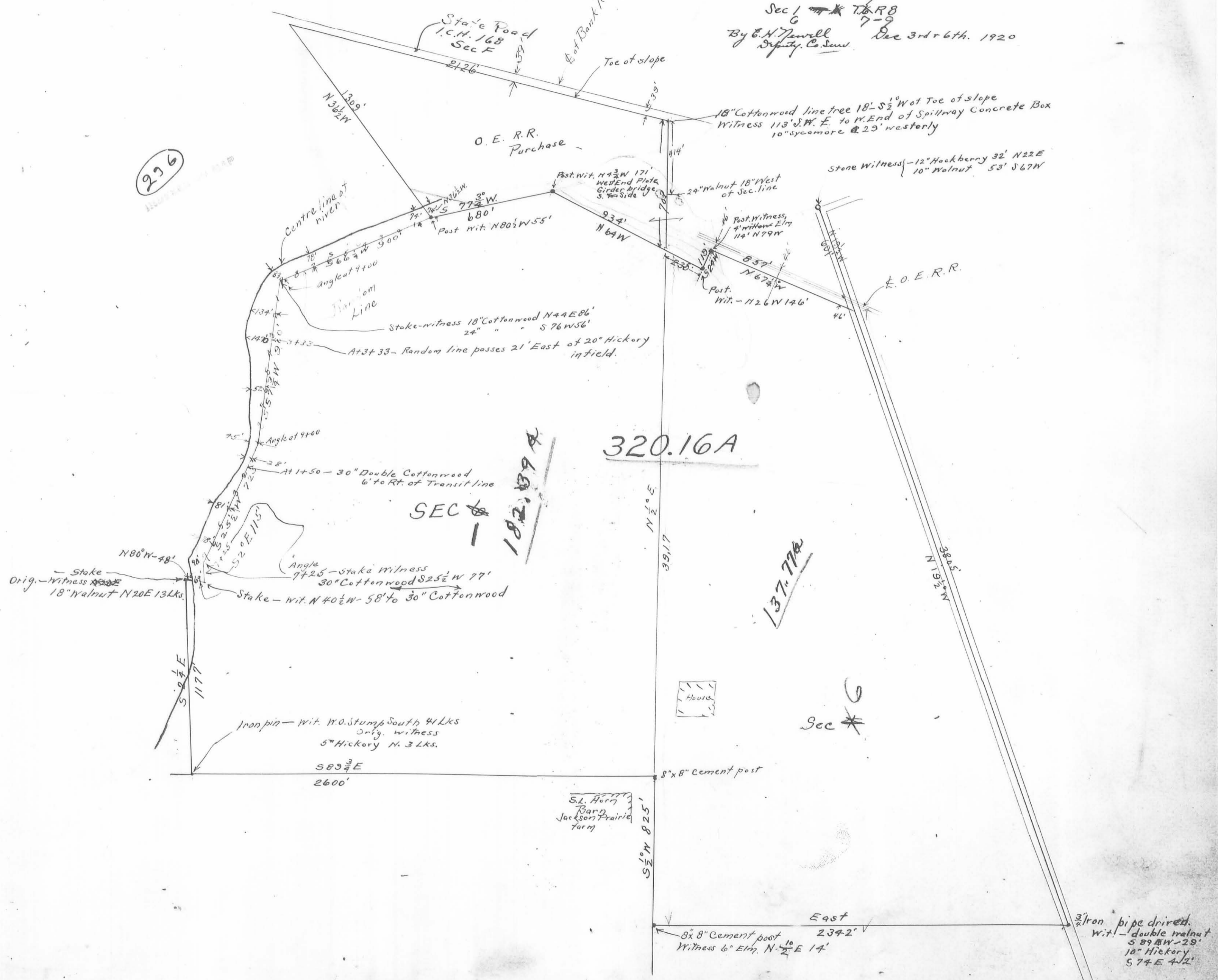


S. L. Horn.

survey  
WASHINGTON TP.

Sec 1 ~~16~~ <sup>7</sup> R8  
By E. N. Jewell  
Deputy Co. Secy. Dec 3rd & 6th. 1920

226



320.16A

SEC 1

182.189A

137.77A

Sec 6

S.L. Horn  
Barr  
Jackson Prairie  
farm

3/4" Iron pipe driven  
wit! - double walnut  
S 89 1/2 W - 29'  
10" Hickory  
S 74 E 4 1/2'