

Dr. R. W. Chalfaut et al. Survey. Feb. 21st 1913

Plot of Vista Park, subdivided for R. C. Cain
March 19th 1913.

R. P. STUDLEY & Co., Manufacturing

STATION. ALIGNMENT. DEFLECTION. REMARKS.

(1) Start at Sub No. 2 & Lot 14. Thence N. on lot line N. side Parkland St.
at 131.2' Transit line, Sta 32+24.5' Included Angle = 40° 43'

(2) Start at NW cor Lot 95. Thence N on Coale Street.

at 566.8' Transit line, Buchanan Reservoir, Sta 40+55.6'

" " Included angle (Cl East) 56° 42'

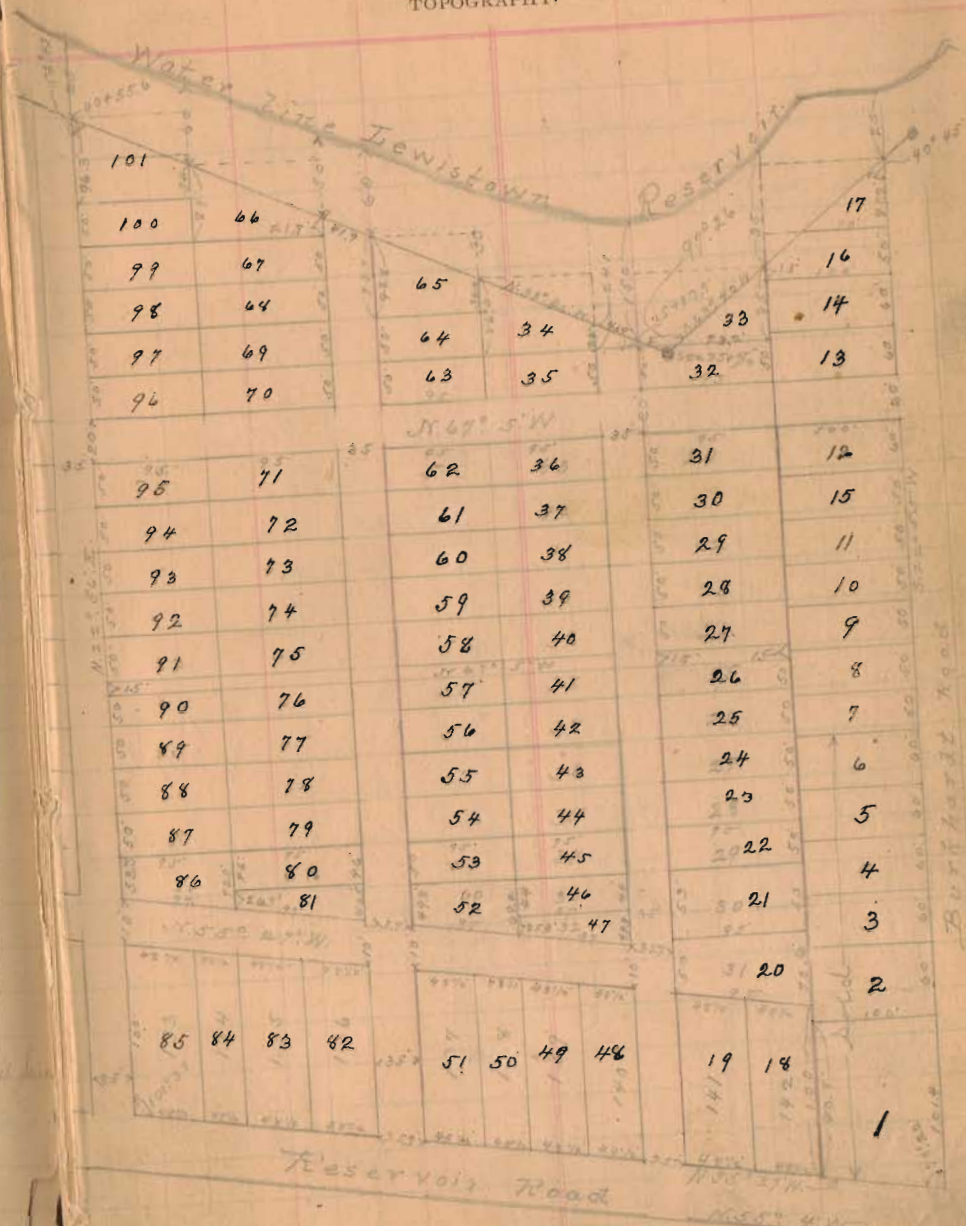
(3) Start at S 97° 4' East 85.0' thence with S line Vista Park & N. line
of Reservoir Road N 56° W 259.4' to old wood corner post at
S. W. cor Vista Park & E. E. cor to State land

at 262.1' cross Buchanan Transit line Reservoir Survey Sta

56+33.0' (See Mark 20' on Reservoir line Sta 56+00.0' for center line of
Reservoir Road at Reservoir line Sta 56+76.5')

East of Reservoir Point, etc.

TOPOGRAPHY.



(4)
INDEXED ON MAP