

**LESLIE H. GEESLIN**  
 REGISTERED SURVEYOR 5248  
 P. O. BOX 274  
 RUSHSVLVANIA, OHIO 43347  
 TELEPHONE: (937) 468-2793

HEATH SURVEY

February 6, 1998

The following described real estate situated in the State of Ohio, County of Logan, Township of Union, being part of Section 12, Town 4, Range 13, M. R. S. and more particularly described as follows:

Beginning at a magnetic nail set in the south line of Section 12 and the centerline of Township Road 30 at the southeast corner of Treva E. Jerviss, et vir's original 80 acre tract as described in O. R. Vol. 234 page 410.

Thence with said Jerviss' east line N. 2° 39' 25" E. 350.00 feet to a 5/8 inch iron bar set, passing a 5/8 inch iron bar set at 25.00 feet.

Thence S. 87° 00' 00" E. 175.00 feet to a 5/8 inch iron bar set.

Thence S. 2° 39' 25" W. 350.00 feet to a magnetic nail set in the south line of said Sec. 12 and the centerline of said C. H. 30, passing a 5/8 inch iron bar set at 325.00 feet.

Thence with the south line of said Sec. 12 and the centerline of said C. H. 30 N. 87° 00' 00" W. 175.00 feet to the place of beginning.

Containing 1.406 acres more or less of which 0.100 acre is in the right of way of County Highway 30.

The above described 1.406 acre tract being in the southwest corner of Gary E. Heath, et ux's 93.42 acre tract as described in O. R. Vol. 23 page 598.

Bearings are based on an assumed bearing (N. 87° 00' 00" W.) for the centerline of County Highway 30 and the south line of Section 12, Town 4, Range 13 in this field survey by Leslie H. Geeslin, Reg. Surveyor 5248 on February 6, 1998.



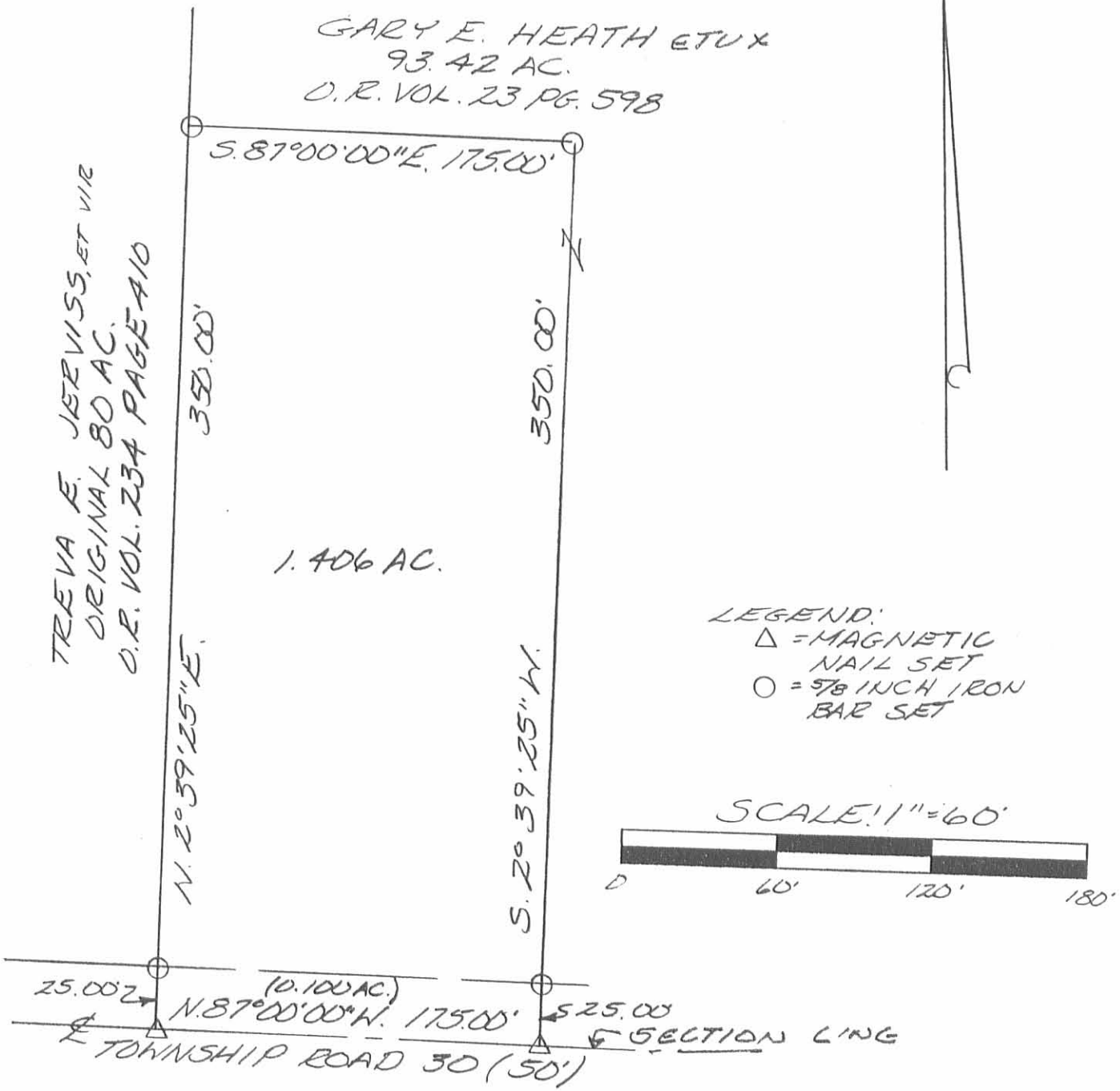
UNIONTWP\12\HEATH.SAM

INDEXED ON MAP  
 9182 ID

*Leslie H. Geeslin*

GARY E. HEATH ETUX  
93.42 AC.  
O.R. VOL. 23 PG. 598

TREVA E. JERVISS, ET VIR  
ORIGINAL 80 AC.  
O.R. VOL. 234 PAGE 10



LEGEND:

- △ = MAGNETIC NAIL SET
- = 5/8 INCH IRON BAR SET

SCALE: 1" = 60'



SURVEY OF 1.406 ACRES IN  
SECTION 12, TOWN 4, RANGE 13, M.R.S.  
UNION TOWNSHIP, LOGAN COUNTY,  
OHIO FOR GARY HEATH ON  
FEBRUARY 6, 1998



INDEXED ON MAP  
9182 1P

*Leslie H. Geeslin*  
LESLIE H. GEESLIN  
RUSHSVANIA, O  
(937) 468-2793

REC'D 8-27-12 smj/uc

# Lee Surveying and Mapping Co., Inc.

Land Surveys • Topography • Subdivisions • Construction Layout

117 N. Madriver St.  
Bellefontaine OH 43311



Phone: (937) 593-7335  
Fax: (937) 593-7444  
surveys@lsminc.us

## HEATH 3.364 ACRES

Lying in Section 12, Town 4, Range 13 M.R.S., Union Township, Logan County, Ohio.

Being out of the Gary E. Heath and Rita M. Heath 93.42 acre tract as deeded and described in Official Record 23, Page 598 of the Logan County Record of Deeds and being more particularly described as follows:

Commencing at a MAG nail found over a monument box at the intersection of center-lines of County Highway 18 (50 feet wide) and Township Road 30 (60 feet wide).

THENCE, with the center-line of Township Road 30, the following two courses:

S 87°-01'-03"E, a distance of 562.55 feet to a MAG nail found.

S 87°-00'-00"E, a distance of 905.04 feet to a MAG nail found at the TRUE POINT OF BEGINNING.

THENCE, with the lines of the Richard Robinson and Michelle C. Robinson 1.406 acre tract, (O.R. 855, Pg. 441), the following two courses:

N 02°-39'-00"E, a distance of 350.05 feet to a 5/8 inch iron rod found, passing a 5/8 inch iron rod found at 25.04 feet.

N 87°-00'-39"W, a distance of 174.94 feet to a 5/8 inch iron rod found.

THENCE, with the east line of the Kathy Mohr 51 acre tract, (O.R. 1025, Pg. 77), N 02°-39'-01"E, a distance of 353.83 feet to a 5/8 inch iron rod set.

THENCE, S 85°-48'-50"E, a distance of 295.91 feet to a 5/8 inch iron rod set.

THENCE, S 02°-32'-18"W, a distance of 697.74 feet to a MAG nail set, passing a 5/8 inch iron rod set at 672.74 feet.

THENCE, with the center-line of Township Road 30, N 87°-00'-00"W, a distance of 122.23 feet to the point of beginning.

Containing 3.364 acre tract of which 0.084 acre is within the highway right-of-way.

Property is subject to any and all previous easements and rights-of-way of record.

The basis for bearings is the center-line of Township Road 30, being S 87°-00'-00"E, and all other bearings are from angles and distances measured in a field survey by Lee Surveying and Mapping Co., Inc. on August 17, 2012.



Description prepared by:

William K. Bruce  
Professional Surveyor 7437  
August 17, 2012

INDEXED ON MAP  
9182 2D-1

ORIGINAL STAMP IN GREEN

L-5375

# Lee Surveying and Mapping Co., Inc.

Land Surveys • Topography • Subdivisions • Construction Layout

117 N. Madriver St.  
Bellefontaine OH 43311



Phone: (937) 593-7335  
Fax: (937) 593-7444  
surveys@lsmcinc.us

## HEATH 4.728 ACRES

Lying in Section 12, Town 4, Range 13 M.R.S., Union Township, Logan County, Ohio.

Being out of the Gary E. Heath and Rita M. Heath 93.42 acre tract as deeded and described in Official Record 23, Page 598 of the Logan County Record of Deeds and being more particularly described as follows:

Commencing at a MAG nail found over a monument box at the intersection of center-lines of County Highway 18 (50 feet wide) and Township Road 30 (60 feet wide).

THENCE, with the center-line of Township Road 30, the following two courses:

S 87°-01'-03"E, a distance of 562.55 feet to a MAG nail found.

S 87°-00'-00"E, a distance of 1027.27 feet to a MAG nail set at the TRUE POINT OF BEGINNING.

THENCE, N 02°-32'-18"E, a distance of 697.74 feet to a 5/8 inch iron rod set, passing a 5/8 inch iron rod set at 25.00 feet.

THENCE, S 85°-48'-50"E, a distance of 295.91 feet to a 5/8 inch iron rod set.

THENCE, S 02°-25'-16"W, a distance of 691.62 feet to a MAG nail set, passing a 5/8 inch iron rod set at 666.62 feet.

THENCE, with the center-line of Township Road 30, N 87°-00'-00"W, a distance of 297.22 feet to the point of beginning.

Containing 4.728 acre tract of which 0.205 acre is within the highway right-of-way.

Property is subject to any and all previous easements and rights-of-way of record.

The basis for bearings is the center-line of Township Road 30, being S 87°-00'-00"E, and all other bearings are from angles and distances measured in a field survey by Lee Surveying and Mapping Co., Inc. on August 17, 2012.

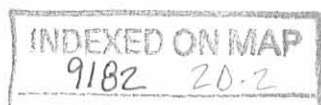
Description prepared by:

William K. Bruce  
Professional Surveyor 7437  
August 17, 2012



ORIGINAL STAMP IN GREEN

L-5375



RECID 0-27-12 SMY ak

# Lee Surveying and Mapping Co., Inc.

Land Surveys • Topography • Subdivisions • Construction Layout

117 N. Madriver St.  
Bellefontaine OH 43311



Phone: (937) 593-7335  
Fax: (937) 593-7444  
surveys@lsminc.us

## HEATH 20 FEET WIDE INGRESS/EGRESS EASEMENT

Lying in Section 12, Town 4, Range 13 M.R.S., Union Township, Logan County, Ohio.

Being a 20 feet wide ingress/egress easement through the Gary E. Heath and Rita M. Heath 93.42 acre tract as deeded and described in Official Record 23, Page 598 of the Logan County Record of Deeds and being more particularly described as follows:

Commencing at a MAG nail found over a monument box at the intersection of center-lines of County Highway 18 (50 feet wide) and Township Road 30 (60 feet wide).

THENCE, with the center-line of Township Road 30, the following two courses:

S 87°-01'-03"E, a distance of 562.55 feet to a MAG nail found.

S 87°-00'-00"E, a distance of 1324.49 feet to a MAG nail set.

THENCE, N 02°-25'-16"E, a distance of 30.00 feet to a point on the north right-of-way of Township Road 30 at the TRUE POINT OF BEGINNING, passing a 5/8 inch iron rod set at 25.00 feet.

THENCE, N 02°-25'-16"E, a distance of 661.62 feet to a 5/8 inch iron rod set.

THENCE, S 85°-48'-50"E, a distance of 20.01 feet to a point.

THENCE, S 02°-25'-16"W, a distance of 661.21 feet to a point on the north right-of-way of Township Road 30.

THENCE, with the north right-of-way of Township Road 30, N 87°-00'-00"W, a distance of 20.00 feet to the point of beginning.

The basis for bearings is the center-line of Township Road 30, being S 87°-00'-00"E, and all other bearings are from angles and distances measured in a field survey by Lee Surveying and Mapping Co., Inc. on August 17, 2012.

Description prepared by:

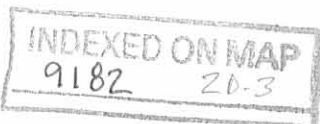
A handwritten signature in black ink that reads "William K. Bruce".

William K. Bruce  
Professional Surveyor 7437  
August 17, 2012



ORIGINAL STAMP IN GREEN

L-5375

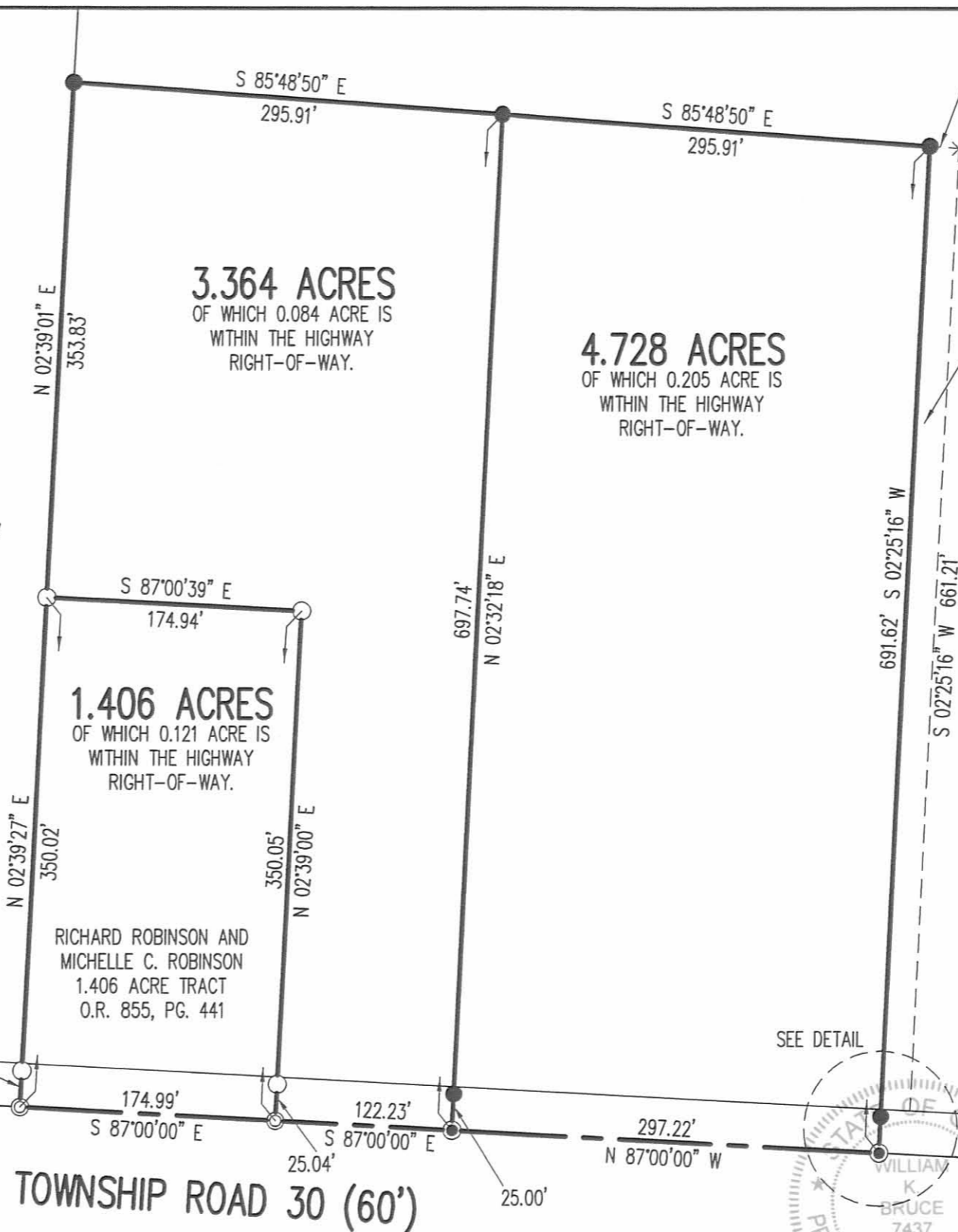
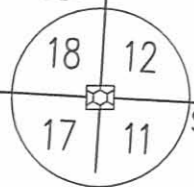


REC'D 8-27-12 SMY OK

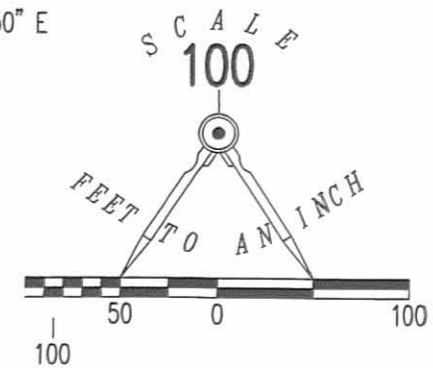
RETRACEMENT SURVEY OF THE  
 RICHARD ROBINSON AND MICHELLE C. ROBINSON  
 1.406 ACRE TRACT  
 OFFICIAL RECORD 855, PAGE 441  
 AND SURVEY OF TWO TRACTS OUT OF THE  
 GARY E. HEATH AND RITA M. HEATH  
 93.42 ACRE TRACT  
 OFFICIAL RECORD 23, PAGE 598  
 SECTION 12, TOWN 4, RANGE 13, M.R.S  
 UNION TOWNSHIP  
 LOGAN COUNTY, OHIO

KATHY MOHR  
 51 ACRE TRACT  
 O.R. 1025, PG. 77

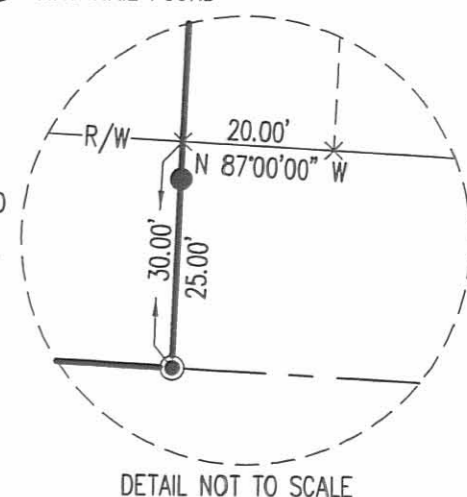
COUNTY HIGHWAY 18  
 (50')



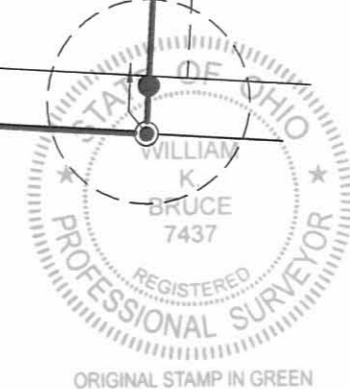
20' WIDE INGRESS/EGRESS EASEMENT



- LEGEND
- 5/8 INCH IRON ROD SET WITH PLASTIC I.D. CAP STAMPED "LSM7437"
  - ⊕ 5/8 INCH IRON ROD FOUND
  - ⊗ MAG NAIL FOUND OVER MONUMENT BOX
  - MAG NAIL SET
  - ⊙ MAG NAIL FOUND



SURVEYED BY:  
*William K. Bruce*  
 WILLIAM K. BRUCE  
 PROFESSIONAL SURVEYOR 7437  
 AUGUST 17, 2012



COPYRIGHT 2012 BY:  
**LEE SURVEYING & MAPPING CO., INC.**  
 117 North Madriver Street  
 BELLEFONTAINE, OHIO 43311  
 (937) 593-7335  
 WWW.LSMINC.US  
 surveys@lsminc.us  
 ADW D0712 53750712 L-5375-3

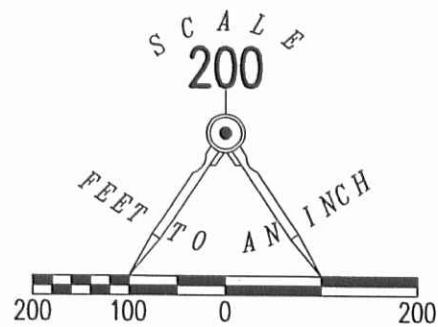
2 WORKING DAYS  
**BEFORE YOU DIG**  
 CALL TOLL FREE **800-362-2764**  
 OHIO UTILITIES PROTECTION SERVICE.

INDEXED ON MAP  
 9182 2P



STA. 80+37  
 (LOGAN COUNTY ENGINEER'S  
 FIELD BOOK 574, PAGE 50)

**RETRACEMENT SURVEY OF THE  
 KATHY MOHR  
 51 ACRE TRACT  
 OFFICIAL RECORD 1025, PAGE 77  
 SECTION 12, TOWN 4, RANGE 13  
 UNION TOWNSHIP  
 LOGAN COUNTY, OHIO**



(BASIS FOR BEARINGS)  
 S 02°40'22" W  
 1339.00'

(6 ACRES)  
 (13 ACRES)

DOUGLAS A. KAUFFMAN  
 O.R. 450, PG. 564

COUNTY HIGHWAY 18 (50')

N 02°40'22" E  
 1715.47'

25.00'  
 S 87°41'50" E  
 1292.05'

GARY E. HEATH  
 ORIGINAL 93.42 ACRES  
 O.R. 23, PG. 598

**51.122 ACRES**

OF WHICH 1.859 ACRES ARE WITHIN THE  
 HIGHWAY RIGHTS OF WAY  
 KATHY MOHR  
 51 ACRES  
 O.R. 1025, PG. 77

1731.02'  
 S 02°39'16" W

RICHARD ROBINSON  
 3.364 ACRES  
 O.R. 1080, PG. 97  
 TRACT I

RICHARD ROBINSON  
 1.406 ACRES  
 O.R. 855, PG. 441

STA. 251+32 (TR 30)  
 (LOGAN COUNTY ENGINEER'S  
 FIELD BOOK 575, PAGE 52)  
 STA. 53+60 (CH 18)  
 (LOGAN COUNTY ENGINEER'S  
 FIELD BOOK 574, PAGE 49)



562.55'  
 N 87°01'03" W  
 730.05'  
 N 87°00'00" W  
**TOWNSHIP ROAD 30 (60')**

- LEGEND:
- ⊕ 1 INCH IRON ROD FOUND
  - ⊙ MAG NAIL FOUND
  - MAG NAIL SET
  - 5/8 INCH IRON ROD FOUND
  - 5/8 INCH IRON ROD SET WITH PLASTIC I.D. CAP STAMPED "LSM 7437"

SURVEYED BY:

*William K. Bruce*  
 WILLIAM K. BRUCE  
 PROFESSIONAL SURVEYOR 7437  
 APRIL 17, 2014



COPYRIGHT 2014 BY:  
**LEE SURVEYING & MAPPING CO., INC.**  
 117 North Madriver Street  
 BELLEFONTAINE, OHIO 43311  
 (937) 593-7335  
 WWW.LSMINC.US  
 surveys@lsminc.us

2 WORKING DAYS  
**BEFORE YOU DIG**  
 CALL TOLL FREE **800-362-2764**  
 OHIO UTILITIES PROTECTION SERVICE.

**INDEXED ON MAP**  
 9182 3P