

234

Feb 7 1836

N<sup>o</sup> 312

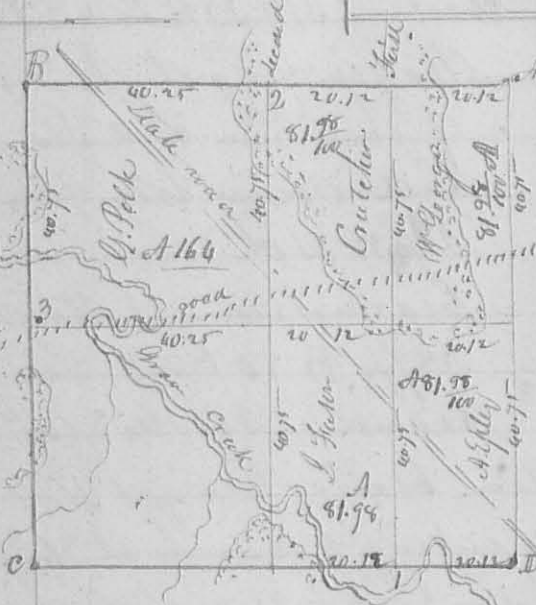
Surveyed February 11. 1836 for Wm McMillin  
 the NW cor of 17 T<sup>3</sup> R 14 S<sup>1</sup> N. beginning at the  
 NW corner of said Sect. a stone corner tree down the  
 S<sup>1</sup>/<sub>4</sub> R 40. Ch 60 links to a Jack Oak 3<sup>1</sup>/<sub>2</sub> S<sup>1</sup>/<sub>2</sub> E 12 Pl  
 um bush 2<sup>1</sup>/<sub>2</sub> N 56 W 5 links, thence S 89 E 39 ch 15  
 links to a white oak 15 S<sup>1</sup>/<sub>2</sub> W 5<sup>1</sup>/<sub>2</sub> E 40 and N. O. 15 S<sup>1</sup>/<sub>2</sub> W  
 N 54 W 5<sup>1</sup>/<sub>2</sub> links thence N 74 E 40 ch. 30 links to the  
 original gr corner in the North line of the section bearing  
 tree gone, thence N 89 W 40 ch. 25 links to the beginning  
 containing 162 <sup>00</sup>/<sub>100</sub> acres -

8371

Sparsing Chamberlain  
 Samuel Seeger } ch. ex<sup>r</sup>  
 Feb 7 11. 1836

San Hopkins Co. Surveyor D.C

N<sup>o</sup> 313



Surveyed Feb 7, 1836 for William  
 George & others (see the plat) S 34 S 4 R 12  
 N. R. 1 as follows: Beginning at the N E  
 corner of said section (the letter M) at a  
 stake, the original tree gone, thence  
 with the North line of said section S 89 W  
 80 ch. 48 links to the north west corner of  
 the section cupping a Big pond at 70 ch  
 to a white oak 12 S<sup>1</sup>/<sub>2</sub> W 30 links  
 & white oak 16 S<sup>1</sup>/<sub>2</sub> E 26 links, thence

8372

this line

S<sup>1</sup>/<sub>2</sub> W 81 ch 50 links cupping creek at 20.50 road at 42 ch & oak  
 at 77 ch to a stake in a prairie, thence S 89 E 80 ch 50 links  
 cupping a small branch at 29.50 on at 45.25. 69.75 & 73 ch to South  
 East corner of the section original bearing tree a Bur Oak 18 S<sup>1</sup>/<sub>2</sub> W  
 N 86 E 12 links, on recently marked S 36 E 35 links, thence N 7 E 81.50  
 cupping two roads to the beginning. The first division line  
 begins west of the SE corner of the Sect. 20.12 (see fig 1) at a  
 W. Oak 16 S<sup>1</sup>/<sub>2</sub> W 6 links thence N 7 E 81.50 cupping two roads to a  
 stake in a prairie 20.12 from the N E corner of the section -  
 the second line begins west of the above termination 20 ch 12  
 at a stake in a prairie, thence S<sup>1</sup>/<sub>2</sub> W 82.50 cupping two roads & 250  
 creek at 78.50 to a stake in a prairie a willow 2 S<sup>1</sup>/<sub>2</sub> East 22 Link

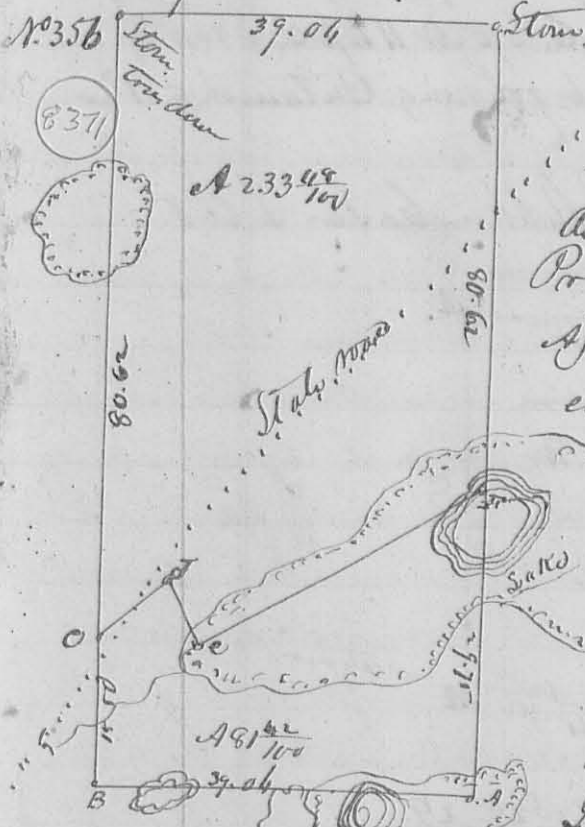
N<sup>o</sup> 355

Surveyed Dec 31<sup>st</sup> 1836 for Thomas Scott part of Survey N<sup>o</sup> 9881 as follows. Beginning at a Black Oak in the line between Mahons heirs & James Stewart then with said line S 78° W 68 poles, cuping a prain to a stake corner between said Stewart and John Pollock then with said Pollocks East line S 12° E 47 poles to two White Oaks one forked. then N 78° E 68 poles, cuping neck of a prain to a stake between two White Oak Stumps. then N 12° W 47 poles to the beginning containing 20 acres - at same time

8396

Surveyed for James Stewart in same Origin at Survey as follows - Beginning at Center of the West line John Pollocks S.W. Corner then with his South line, N 78° E 100 poles, cuping a ditch at 39 poles, & small branch at 48 poles to stake near a Hickory Grub then S 12° E 20 poles, cuping a small branch at about 21 poles, to two White Oak Grubs & White then in the Greenville treaty line then with said line S 78° W 100 poles to a White Oak & two Red Oaks S.W. Corner of the origin at Survey - then with the line thereof N 12° W 200 poles to the beginning containing 125 acres -

6<sup>th</sup> S7. B. R. 1/4 MRS.



Surveyed Dec 29. 1836 for Alexander Cook 81 1/2 acres of land of the South end of the East half of S7 B. R. 1/4 MRS as follows. - Beginning at a Stump in a Pointing S. E. Corner of said section. See letter A) then N 89° W 39 ch. 6 Links cuping the edge of the Populus Oaks cuping a small run and popping through a Willow Pond to a White Oak 15 S.D. N 88° W 3 Links and White Oak 22 S.D. N 12° E 11 Links. then N 12° E 15 ch 50 Links to a White Oak 18 S.D. N 31° W 16 Links, then N 57° E 9 ch. 50 Links to a White Oak 18 S.D. N 57° E 7 Links. White Oak 18 S.D. S 29° W 39 Links, then S 22° E 7 ch. 80 Links to a Stake in the edge of a ditch, then with said ditch N 61° E 33 ch. 50 Links to the east line of said section in a Lake. then S 12° W 29 ch. 75 Links to the beginning.

Wm. Sharp.  
Mar. P. Orrico et al

Land Office Clerk  
J.C.

39 1/2  
156.068