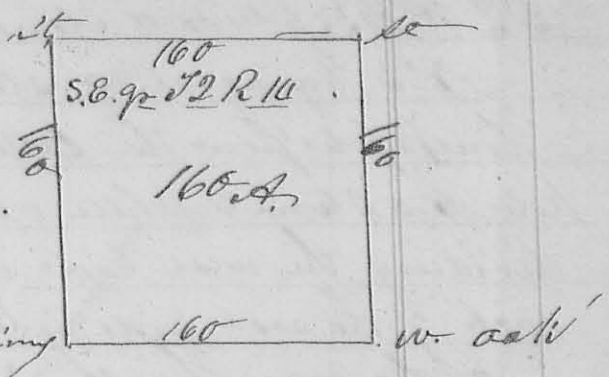


141
of the section a white oak
r 3/4 W 44 links; thence with
the south line of the sec.
west 160 poles to the begin-
ning containing 160 acres
John Moore }
John Brice }
C. Williamson }
Beginning

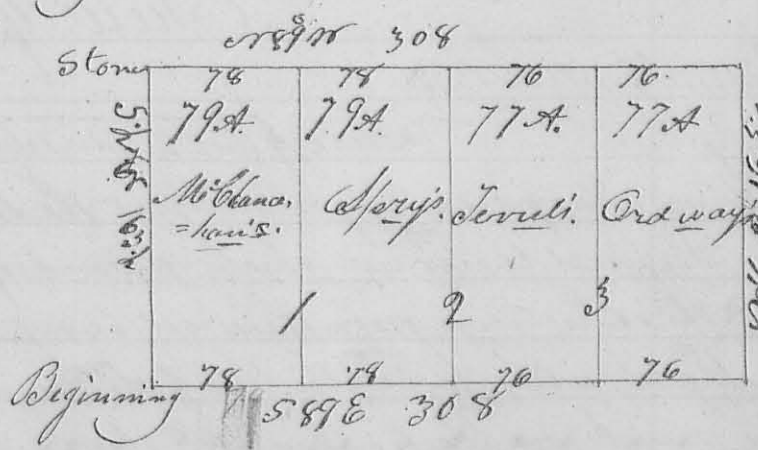


3rd. imp. March, 24th 1832 - Surveyors 178

John
Brice
Spry
McChana-
han
Ordway

Surveyors divided the south half
of section 10 Town 4. R. 13 M.D.S. as follows for
John Ordway, John Spry, Josiah Terrell &
McChana-han. Beginning at the southwest
corner of said sec. the original corner post (a m.o.
10 in. diam. S 28 W 6 links, a P. oak 3 in. D. S 58 E 7 links
being much decayed a stone was plant, thence S 89 E
with the line between Sec. 9 & 10 308 poles to the corner
of 3, 4, 9 & 10 original bearing tree standing, a hickory
S 24 E 15 links, a hickory north 4 links dist., placed
a stone at this corner; thence with the line between
Sec. 4 & 10 r 3/4 W 16 3/4 poles to the original q. sec.
corner between Sec. 4 & 10, a hickory r 3 7/8 E 20 links dist.
a white oak r 17 7/8 W 12 links, placed a stone at this corner
thence r 8 7/8 W 308 poles to a stone in the west line of
this sec 10 thence with said line S 5 1/2 E 16 1/2 poles to the
beginning containing 312 1/2 acres. -

Division line r 1
begins in the south
line of the sec.
at a stone 78 poles
from the S.W.
corner thereof a
m.o. r 17 E 44 links
thence r 1/2 E 16 3/4



Hick. & w. oak
Hickories

poles to a stone in the north line of the half sec. a m.o. at the
corner. - R 2 begins in the north line 78 poles from the
east

last named corner, a stone and black oak, thence
 S 2° W 163 $\frac{1}{2}$ poles to a stone and hickory in the south line
 N 3° being at a stone and elm in the south
 line 16 poles from the latter corner thence N 2° E 163 $\frac{1}{2}$
 poles to a stone & white oak in the north line - then
 dividing the west side into two equal lots of 79 acres
 each & the east side into two of 77 acres each -
 Solomon Thrasher }
 Peter Provost } J. M. Marmou
 C. S. L. C. S.

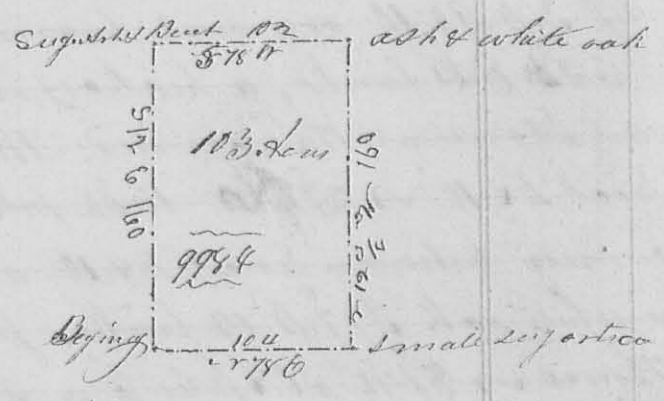
John Benders

13th March, 28th 1832

Survey No 179

(8267)

Surveyed 103 acres for John Benders beginning
 at a red oak and two buck stumps in a line N.E. of Ropp's
 house - thence with said line N 78° E 104 poles to a small sugar
 tree - thence N 2° W 160 poles to an ash and white oak - thence
 S 78° W, crossing the road from Bellefontaine to Detroit
 at 22 poles) 102 poles to a sugar tree ash & buck corner to John
 Piatt's 50 acres - thence
 with the east line
 S 12° E 160 poles (crossing the
 aforesaid road at 108 poles)
 to the beginning part of
 Survey 9984 on Cherokee
 - Mar's run



Asst. Surveyor Patrick }
 Peter Beards } J. M. Marmou
 C. S. L. C. S.

J. M. Marmou C. S. L. C. S.

Survey No 180

Thomas Morquis } 4th Mo, April 16th 1832

(8268)

Survey the E^h of sec. 1 Town. 2 Range 15th 18th
 for Thomas Morquis; Beginning at the south corner of said
 sec. an original corner tree a hickory standing & 57 $\frac{1}{2}$ W 21 links
 distant, the other tree is down there yet being some remains
 thereof - thence with the south line of the sec. west 160 poles to
 a stone marked a black oak N 80° E 9 links dist hickory N 8° W
 43 links, a white oak S 25° E 48 links distant - thence north
 crossing a branch at 116 poles over at 186 poles) 332 poles to a stone