

LESLIE H. GEESLIN
REGISTERED SURVEYOR NO. 5248
P. O. BOX 274
RUSHSVLVANIA, OHIO 43347

TELEPHONE: (513) 468-2793

KAUFFMAN SURVEY

April, 1983

The following described real estate situated in the State of Ohio, County of Logan, Township of Union, being part of the south 1/2 of the northeast 1/4 of Section 18 and the northwest 1/4 of Section 12, Town 4, Range 13, M.R.S. and more particularly described as follows;

Beginning at a concrete corner post at the center of Section 18; thence N. $0^{\circ} 10' 58''$ E. 1339.39 feet to an iron bar; thence N. $89^{\circ} 58' 02''$ E. 2242.36 feet to an iron bar; thence S. $2^{\circ} 24' 00''$ E. 851.60 feet to an iron bar; thence N. $89^{\circ} 55' 45''$ E. 476.23 feet to an iron bar in the centerline of County Highway 18; thence with said C.H. 18 S. $24^{\circ} 02' 13''$ W. 116.69 feet to the east line of Section 18; thence with said east line N. $0^{\circ} 17' 02''$ W. 81.51 feet to an iron bar at the northeast corner of Herbert L. King's 8.00 acre tract; thence with said King's north line S. $39^{\circ} 55' 45''$ W. 747.21 feet to an iron bar; thence with said King's west line S. $0^{\circ} 17' 02''$ E. 462.00 feet to an iron bar in the south line of the northeast 1/4 of Sec, 18; thence with said south line S. $89^{\circ} 55' 45''$ W. 1965.72 feet to the place of beginning.

Containing 66.66 acres more or less, of which 66.⁶⁰~~05~~ acres are in Section 18 and ~~0.61~~ acre is in Section 12.

0.04

(6836) 1D-1

INDEXED ON MAP

LESLIE H. GEESLIN
REGISTERED SURVEYOR NO. 5248
P. O. BOX 274
RUSHSVLVANIA, OHIO 43347

TELEPHONE: (513) 468-2793

KAUFFMAN SURVEY

April 1983

The following described real estate situated in the State of Ohio, County of Logan, Township of Union, being part of the south $\frac{1}{2}$ of the northeast $\frac{1}{4}$ of Section 18 and the northwest $\frac{1}{4}$ of Section 12, Town 4, Range 13, M.R.S. and more particularly described as follows;

Beginning at an iron bar at the Northeast Corner of the south $\frac{1}{2}$ of the Northeast $\frac{1}{4}$ of Section 18; thence with the east line of Section 18 S. $0^{\circ} 17' 02''$ E. 388.82 feet to a point in *MEKES* Creek; thence with *MEKES* Creek S. $49^{\circ} 28' 00''$ E. 275.19 feet to a point in the centerline of County Highway 18; thence with said C.H. 18 S. $34^{\circ} 17' 45''$ W. 60.00 feet to an iron bar; thence with said C.H. 18 S. $29^{\circ} 33' 00''$ W. 199.57 feet to an iron bar; thence with said C.H. 18 S. $24^{\circ} 02' 18''$ W. 65.36 feet to an iron bar; thence S. $89^{\circ} 55' 45''$ W. 476.23 feet to an iron bar; thence N. $2^{\circ} 24' 00''$ W. 851.60 feet to an iron bar in the south line of the North $\frac{1}{2}$ of the N.E. $\frac{1}{4}$ of Section 18; thence with said south line N. $89^{\circ} 58' 02''$ E. 459.67 feet to the place of beginning.

Containing 9.90 acres, more or less of which 8.53 acres are in Section 18 and 1.37 acres are in Section 12.

6836 1D-2

INDEXED ON MAP

THIS POINT IS 3.68'
NORTH & 0.83' WEST
OF HEAD COR. POST

1339.57' TO
N.W. COR. NE 1/4
SEC. 18

FOOD MART INC.
78.12 AC.
DB VOL. 358 P. 501

N. 89° 58' 02" E. 2242.36'

N. 89° 58' 02" E. 459.67'

THIS CORNER IS
2.2' WEST OF CORN.
CORNER POST

1332.60' TO
N.E. COR. SEC. 18

N

9.90 AC. TOTAL

8.53 AC.

66.66 AC. TOTAL
66.60 IN

OTIS C. ROGERS
73.27 AC.
DB VOL. 382 P. 520

1339.57'
N. 0° 10' 58" E.

348.82'

S. 0° 17' 02" E.

SECTION 18

SECTION 12

1.37 AC.

CO. HWY. 18 (50')

N. 0° 17' 02" W.

199.57'

S. 29° 33' W.

174.45' W.

S. 38° 17' 45" W.

174.45' W.

174.45' W.

174.45' W.

174.45' W.

174.45' W.

174.45' W.

174.45' W.

174.45' W.

174.45' W.

174.45' W.

174.45' W.

174.45' W.

174.45' W.

174.45' W.

174.45' W.

174.45' W.

174.45' W.

174.45' W.

174.45' W.

174.45' W.

174.45' W.

174.45' W.

174.45' W.

174.45' W.

174.45' W.

174.45' W.

174.45' W.

174.45' W.

174.45' W.

174.45' W.

174.45' W.

174.45' W.

174.45' W.

174.45' W.

174.45' W.

174.45' W.

174.45' W.

174.45' W.

174.45' W.

174.45' W.

174.45' W.

174.45' W.

174.45' W.

174.45' W.

174.45' W.

174.45' W.

174.45' W.

174.45' W.

174.45' W.

174.45' W.

174.45' W.

174.45' W.

174.45' W.

174.45' W.

174.45' W.

174.45' W.

174.45' W.

174.45' W.

174.45' W.

174.45' W.

174.45' W.

174.45' W.

174.45' W.

174.45' W.

174.45' W.

174.45' W.

174.45' W.

174.45' W.

174.45' W.

174.45' W.

174.45' W.

174.45' W.

174.45' W.

174.45' W.

174.45' W.

174.45' W.

174.45' W.

174.45' W.

174.45' W.

174.45' W.

174.45' W.

174.45' W.

174.45' W.

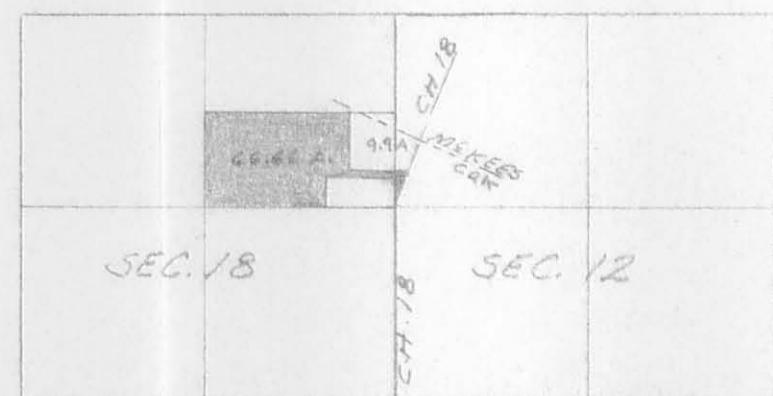
174.45' W.

174.45' W.

174.45' W.

174.45' W.

HERBERT L. KING
66.31 AC.
DB VOL. 277 P. 122



LOCATION SKETCH

HERBERT L. KING
30.00 AC.
DB VOL. 363 P. 666

HERBERT L. KING
8.00 AC.
DB VOL. 363 P. 666

SURVEY OF 66.66 AC. AND 9.90 AC. TRACTS
IN SECTIONS 18 AND 12, TOWN 4, RANGE 13,
UNION TOWNSHIP, LOGAN COUNTY, OHIO
FOR
ROBERT M. KAUFFMAN
APRIL, 1983
SCALE: 1"=100'

LEGEND:
A=STONE FOUND
B=CONCRETE COR. POST
C=IRON BAR FD.
D=9/8" IRON BAR SET
E=RR SPIKE SET



Leslie H. Geeslin
LESLIE H. GEESLIN
RUSHSVLVANIA, OHIO



INDEXED ON MAP