

Received 7-10-00 of jll

Lee Surveying and Mapping Co., Inc.

Land Surveys • Topography • Subdivisions • Construction Layout

117 N. Madriver St.
Bellefontaine OH 43311



Phone: (937) 593-7335
Fax: (937) 593-7444

BRAGG 3.434 ACRES

Lying in Section 2, Town 3, Range 14, Union Township, Logan County, Ohio.

Being out of the Roy L. Bragg original 65.18 acre tract as deeded and described in Official Record 121, Page 15, Tract I of the Logan County Records of Deeds and being more particularly described as follows:

Beginning at a MAG nail found at the intersection of the center-line of County Highway 18 (Variable Right-of-way) and the west line of Liberty Township.

THENCE, with the center-line of County Highway 18, S 55°-24'-25" W, a distance of 688.30 feet to a MAG nail found at the southeast corner of the Wesley E. Hennigan 1.054 acre tract (O.R. 315, Pg. 426).

THENCE, with the east line of the said 1.054 acre tract, N 22°-40'-13" W, a distance of 306.04 feet to a 5/8 inch iron rod found at the northeast corner of the said 1.054 acre tract, passing a 5/8 inch iron rod found at 37.45 feet.

THENCE, N 55°-24'-25" E, a distance of 162.11 feet to a 5/8 inch iron rod set.

THENCE, S 76°-19'-08" E, a distance of 144.00 feet to a 5/8 inch iron rod set.

THENCE, N 65°-15'-17" E, a distance of 209.51 feet to a 5/8 inch iron rod set.

THENCE, N 60°-34'-46" E, a distance of 277.37 feet to a 5/8 inch iron rod set on the west line of Liberty Township and the west line of the Rickie L. Moore 5.00 acre tract (O.R. 301, Pg. 022).

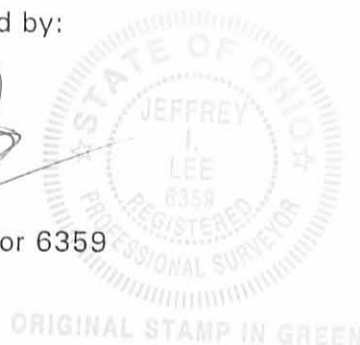
THENCE, with the west line of Liberty Township, S 6°-47'-26" W, a distance of 174.77 feet to the place of beginning, passing a 5/8 inch iron rod set at 134.79 feet.

Containing 3.434 acres of which 0.593 acre is within the highway right-of-way.

The basis for bearings is the center-line of County Highway 18 being S 55°-24'-25" W, and all other bearings are from angles and distances measured in a field survey by Lee Surveying and Mapping Co., Inc. on June 30, 2000.

Description prepared by:


Jeffrey I. Lee
Professional Surveyor 6359
July 5, 2000



L-340

INDEXED ON MAP
61297D

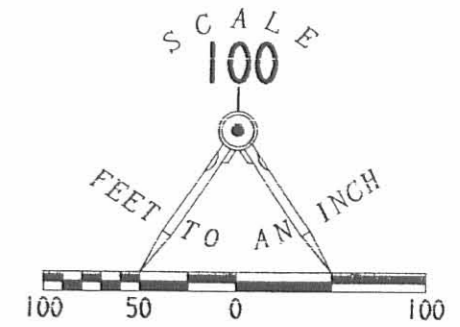
ROY L. BRAGG
 ORIG. 65.18 ACRES
 O.R. 121, PG. 15
 TRACT 1

RICKIE L. MOORE
 AND TAMMY L. MOORE
 5.0 ACRES
 O.R. 301, PG. 022

3.434 ACRES
 OF WHICH 0.593 ACRE IS WITHIN
 THE HIGHWAY RIGHT-OF-WAY

WESLEY E. HENNINGAN
 AND SHANNON R. HENNINGAN
 O.R. 315, PG. 426

**SURVEY OF 3.434 ACRES OUT OF THE
 ROY L. BRAGG
 ORIGINAL 65.18 ACRE TRACT
 OFFICIAL RECORD 121, PAGE 15
 TRACT 1
 SECTION 2, TOWN 3, RANGE 14
 UNION TOWNSHIP
 LOGAN COUNTY, OHIO**



REFERENCES

COUNTY HIGHWAY 18 R/W MAP
 PAGE 6 OF 16
 DATED 1972

LEGEND

- 5/8 INCH IRON ROD SET
- 5/8 INCH IRON ROD FOUND
- ⊗ MAG NAIL FOUND



ORIGINAL STAMP IN GREEN

SURVEYED BY:

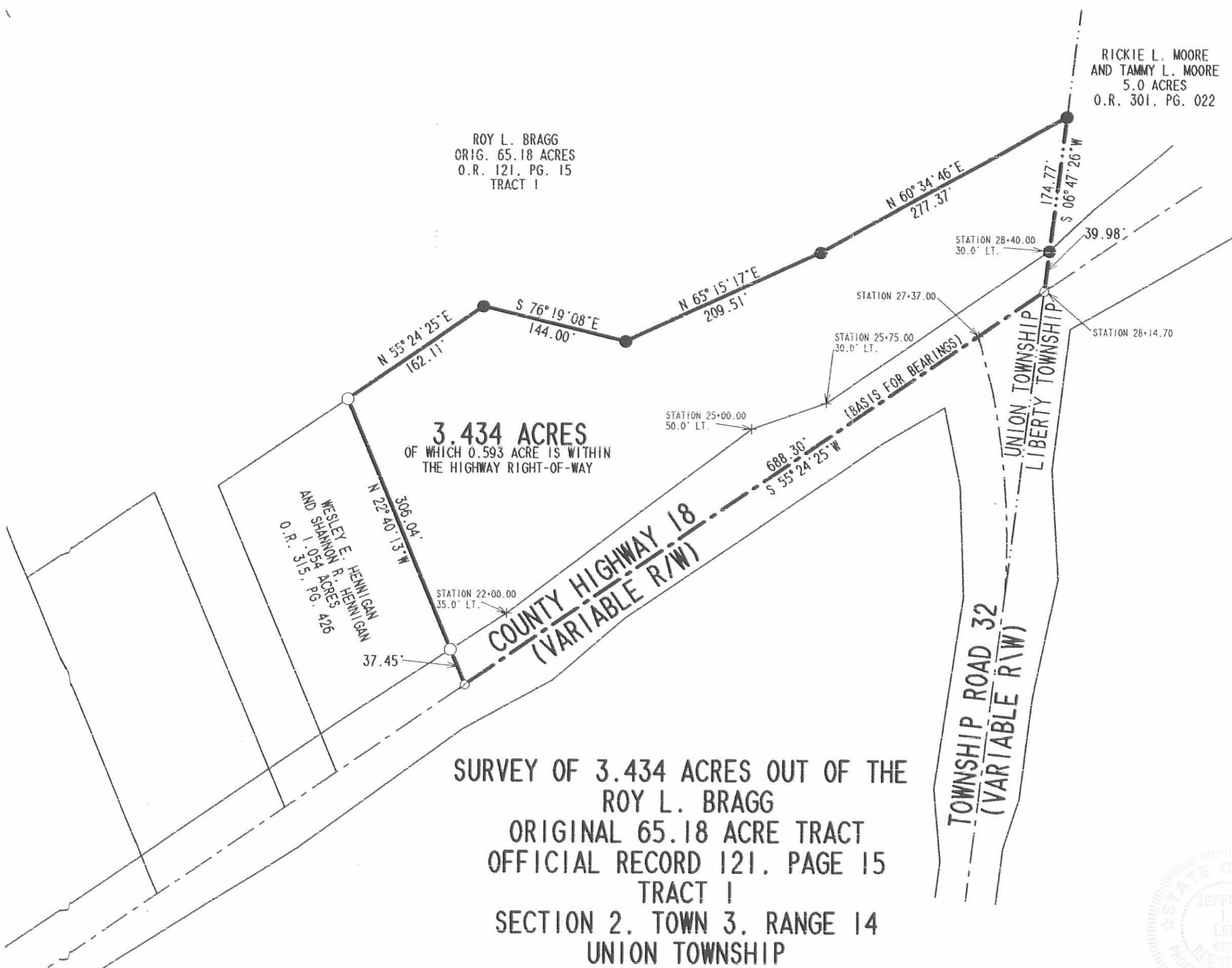
 JEFFREY I. LEE
 PROFESSIONAL SURVEYOR 6359
 JUNE 30, 2000

COPYRIGHT 2000 BY:
LEE SURVEYING & MAPPING CO., INC.
 117 North Madriver Street
 BELLEFONTAINE, OHIO 43311
 (937) 593-7335

D-379 BRGCH18A L-340-3

2 WORKING DAYS
BEFORE YOU DIG
 CALL TOLL FREE **800-362-2764**
 OHIO UTILITIES PROTECTION SERVICE.

INDEXED ON MAP
 6129 1P





Lee Surveying and Mapping Co.



Farm Surveys • Lot Surveys • Topography • Subdivisions • Construction Layout

143 EAST COLUMBUS AVENUE
BELLEFONTAINE, OHIO 43311

(513) 593-7335

JEFFREY I. LEE, P.S.

ROY L. BRAGG (2.000 ACRES)

Lying in Section 2, Town 3, Range 14, Union Township, Logan County, Ohio.

Being out of the Roy L. Bragg 65.18 acre tract as deeded and described in Official Record 121, Page 15 of the Logan County Records of Deeds and being more particularly described as follows:

Beginning at a railroad spike set on the center-line of County Highway 18 at the southeast corner of the Robert Arbogast 6.12 acre tract (O.R. 30, PG. 687), and being N 55°-24'-25" E, a distance of 212.70 feet from a 1/2 inch iron rod found at P.I. Station 12+62.7 of the center-line survey of County Highway 18.

THENCE, with the east line and the east line extended of the said 6.12 acre tract, N 22°-42'-15" W, a distance of 395.69 feet to a 5/8 inch iron rod set.

THENCE, N 55°-24'-25" E, a distance of 225.00 feet to a 5/8 inch iron rod set.

THENCE, S 22°-42'-15" E, a distance of 395.69 feet to a railroad spike set on the center-line of County Highway 18.

THENCE, with the center-line of County Road 18, S 55°-24'-25" W, a distance of 225.00 feet to the point of beginning.

Containing 2.000 acres of which 0.198 acre is within the highway right-of-way.

The basis for bearings is based upon the center-line of County Highway 18 being S 55°-24'-25" W, and all other bearings are from angles and distances measured in a field survey by Lee Surveying and Mapping Company on April 23, 1992.

Description prepared by:

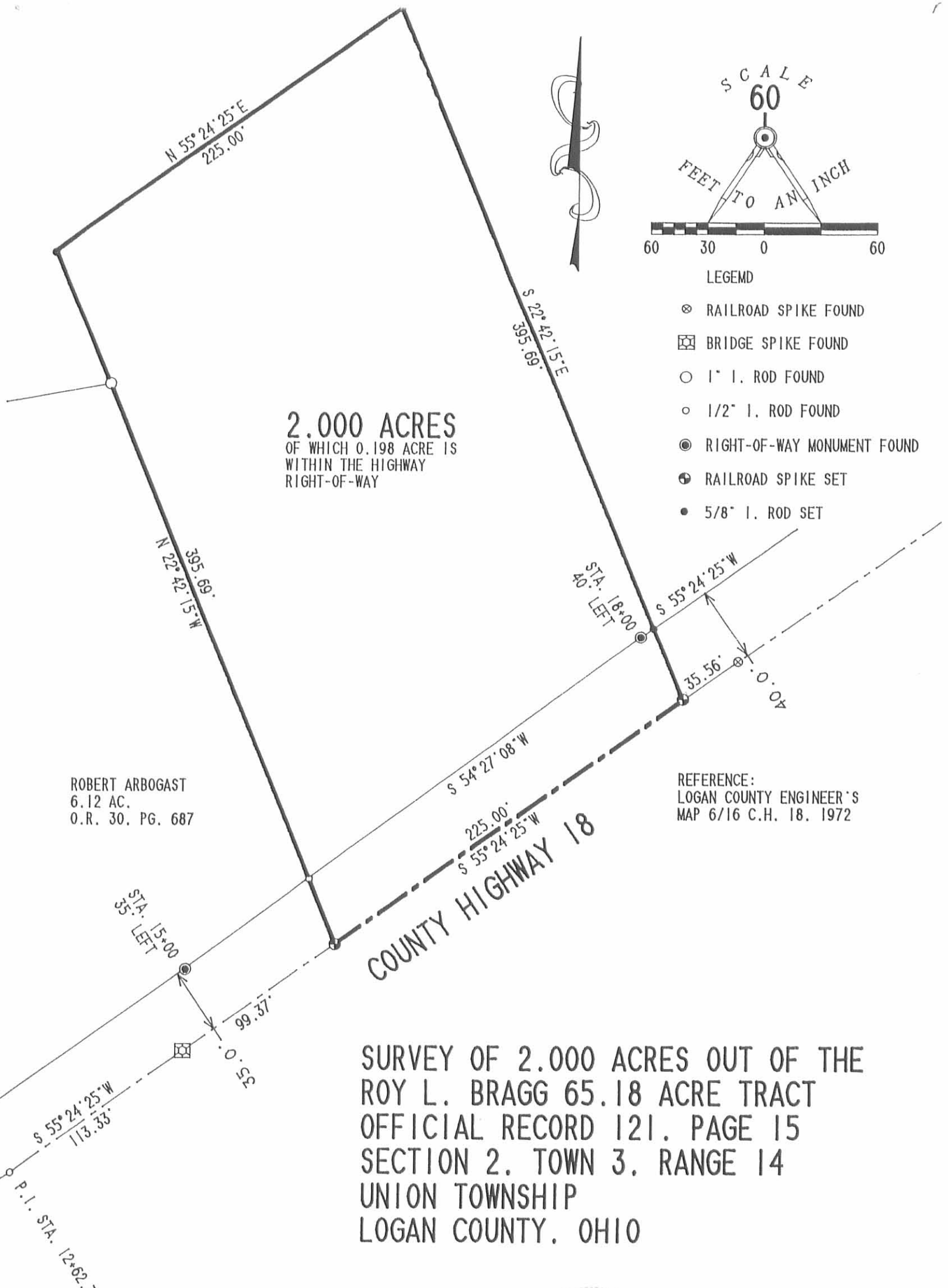
Jeffrey I. Lee
Professional Surveyor 6359
May 4, 1992



ORIGINAL STAMP IN GREEN

L 340

INDEXED ON MAP
6129 8D



2.000 ACRES
OF WHICH 0.198 ACRE IS
WITHIN THE HIGHWAY
RIGHT-OF-WAY

ROBERT ARBOGAST
6.12 AC.
O.R. 30, PG. 687

REFERENCE:
LOGAN COUNTY ENGINEER'S
MAP 6/16 C.H. 18, 1972

COUNTY HIGHWAY 18

SURVEY OF 2.000 ACRES OUT OF THE
ROY L. BRAGG 65.18 ACRE TRACT
OFFICIAL RECORD 121, PAGE 15
SECTION 2, TOWN 3, RANGE 14
UNION TOWNSHIP
LOGAN COUNTY, OHIO

SURVEYED BY:



JEFFREY I. LEE
PROFESSIONAL SURVEYOR 6359
APRIL 23, 1992

LEE SURVEYING & MAPPING CO.
143 East Columbus Avenue
BELLEFONTAINE, OHIO 43311
(513) 593-7335

INDEXED ON MAP
6129 8P

DISK 73 BRAGG2AC L 340-4

REC'D 4-14-95 SMY OK ✓



Lee Surveying and Mapping Co.



Farm Surveys • Lot Surveys • Topography • Subdivisions • Construction Layout

143 EAST COLUMBUS AVENUE
BELLEFONTAINE, OHIO 43311

(513) 593-7335

JEFFREY I. LEE, P.S.

ROY L. BRAGG 0.545 ACRE

Lying in Section 2, Town 3, Range 14, Union Township, Logan County, Ohio.

Being out of the Roy L. Bragg original 65.18 acre tract as deeded and described in Official Record 121, Page 15 of the Logan County Records of Deeds and being more particularly described as follows:

Beginning at a railroad spike found on the center-line of County Highway 18 at the southeast corner of the Robert Arbogast 6.12 acre tract (O.R. 30, PG. 687), and being N 55°-24'-25" E, a distance of 212.70 feet from a 1/2 inch iron rod found at P.I. Station 12+62.7 of the center-line survey of County Highway 18.

THENCE, with the center-line of County Highway 18, N 55°-24'-25" E, a distance of 225.00 feet to a railroad spike found at the southeast corner of the David Q. Nicholl 2.000 acre tract (O.R. 161, Pg. 994) and the TRUE POINT OF BEGINNING.

THENCE, with the east line of the said 2.000 acre tract, N 22°-42'-15" W, a distance of 395.69 feet to a 5/8 inch iron rod found at the northeast corner of the 2.000 acre tract.

THENCE, N 55°-24'-25" E, a distance of 61.31 feet to a 5/8 inch iron rod set.

THENCE, with the west property line extended and the west property line of the Janet E. Crump 1.138 acre tract (O.R. 242, Pg. 56), S 22°-42'-15" E, a distance of 395.69 feet to a railroad spike found on the center-line of County Highway 18.

THENCE, with the center-line of County Road 18, S 55°-24'-25" W, a distance of 61.31 feet to the point of beginning.

Containing 0.545 acres of which 0.056 acre is within the highway right-of-way.

The basis for bearings is based upon the center-line of County Highway 18 being S 55°-24'-25" W, and all other bearings are from angles and distances measured in a field survey by Lee Surveying and Mapping Company on April 7, 1995.

Description prepared by:

Jeffrey I. Lee
Professional Surveyor 6359
April 14, 1995

L 340



ORIGINAL STAMP IN GREEN

INDEXED ON MAP
6129 9D

REC'D 4-14-95 SMY OK

2 WORKING DAYS



BEFORE YOU DIG



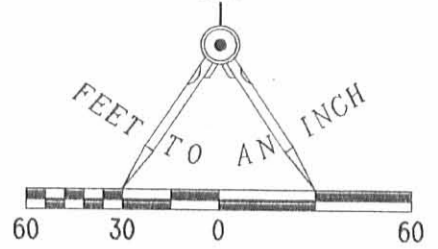
CALL TOLL FREE **800-362-2764**

OHIO UTILITIES PROTECTION SERVICE.

ROY L. BRAGG
65.18 ACRES
O.R. 121, PG. 15, TRACT 1



SCALE
60



LEGEND

- 5/8" IRON ROD SET W/ PLASTIC I.D. CAP STAMPED "LEE PS6359"
- 5/8" IRON ROD FOUND
- 1/2" IRON ROD FOUND
- ⊗ RAILROAD SPIKE FOUND
- CONC. R/W MON. FOUND

DAVID Q. NICHOLL
2.000 ACRES
O.R. 161, PG. 994

JANET E. CRUMP
1.138 ACRES
O.R. 242, PG. 56

OF WHICH 0.056 ACRE IS WITHIN
THE HIGHWAY RIGHT-OF-WAY
0.545 ACRE

COUNTY HIGHWAY 18

STA. 18+00
40' LEFT

**SURVEY OF 0.545 ACRE OUT OF THE
ROY L. BRAGG 65.18 ACRE TRACT
OFFICIAL RECORD 121, PAGE 15, TRACT 1
SECTION 2, TOWN 3, RANGE 14
UNION TOWNSHIP
LOGAN COUNTY, OHIO**

REFERENCES

1. COUNTY HIGHWAY 18, R/W MAP, SHEET 6 OF 16, DATED 1972.
2. PREVIOUS SURVEY OF 2.000 AC. TRACT BY LEE SURVEYING AND MAPPING COMPANY, DATED 04/23/92. FILE NO. L-340-4.
3. LOGAN COUNTY ENGINEER'S SURVEY RECORDS, DRAWER "R", FILE NO. 6129.

INDEXED ON MAP
6/29 99



SURVEYED BY:

JEFFREY T. LEE
PROFESSIONAL SURVEYOR 6359
APRIL 7, 1995

COPYRIGHT 1995 BY:
LEE SURVEYING & MAPPING CO.
143 East Columbus Avenue
BELLEFONTAINE, OHIO 43311
(513) 593-7335

Lee Surveying and Mapping Co.



Farm Surveys • Lot Surveys • Topography • Subdivisions • Construction Layout

855 EAST SANDUSKY AVENUE
BELLEFONTAINE, OHIO 43311

(513) 593-5780

CLAYTON M. LEE, P.S.
JEFFREY I. LEE, P.S.

WILBUR Y. KING (71.300 ACRES)

Lying in the southwest quarter of Section 2, T-3, R-14, B.T.M., Union Township, Logan County, Ohio and being a part of that tract deeded and described in Volume 347, Page 778 of the Logan County Records of Deeds and being the same tract that is shown as being 66.53 acres on Union Township plat Page No. 4 of Logan County Map Records and more particularly described as follows:

Beginning at a corner stone found in the east-west quarter-section line at the northwest corner of subject premises.

THENCE, with said quarter-section line, S 83°-48'-50" E, a distance of 2251.49 feet to an iron rod set in the north-south quarter-section line on the east line of Union Township.

THENCE, with said township line, S 6°-43'-20" W, a distance of 657.48 feet to a spike set in the intersection of the center-lines of County Highway 18 and Township Road 32, designated as being Station 28+14.70 on the Logan County survey records of County Highway 18.

THENCE, with the original center-line (property line) of said County Highway 18, S 55°-24'-25" W, a distance of 1551.11 feet to an iron rod found at an angle in said center-line.

THENCE, continuing with said center-line, S 56°-41'-17" W, a distance of 581.40 feet to an iron spike found at the southeast corner of a 1.68 acre tract. (Volume 370, Page 309).

THENCE, with the east line of said 1.68 acres and the east line of a 36.35 acre tract (Volume 334, Page 6), N 11°-48' W, a distance of 765.42 feet to a broken concrete post.

THENCE, continuing with the line of said 36.35 acres, N 84°-22'-50" W, a distance of 387.40 feet to the center of a concrete post.

THENCE, N 6°-15'-15" E, with a fence line, a distance of 1316.13 feet to the point of beginning. Containing 71.30 acres.

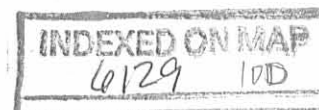
Last previous deed reference: Volume 347, Page 778.

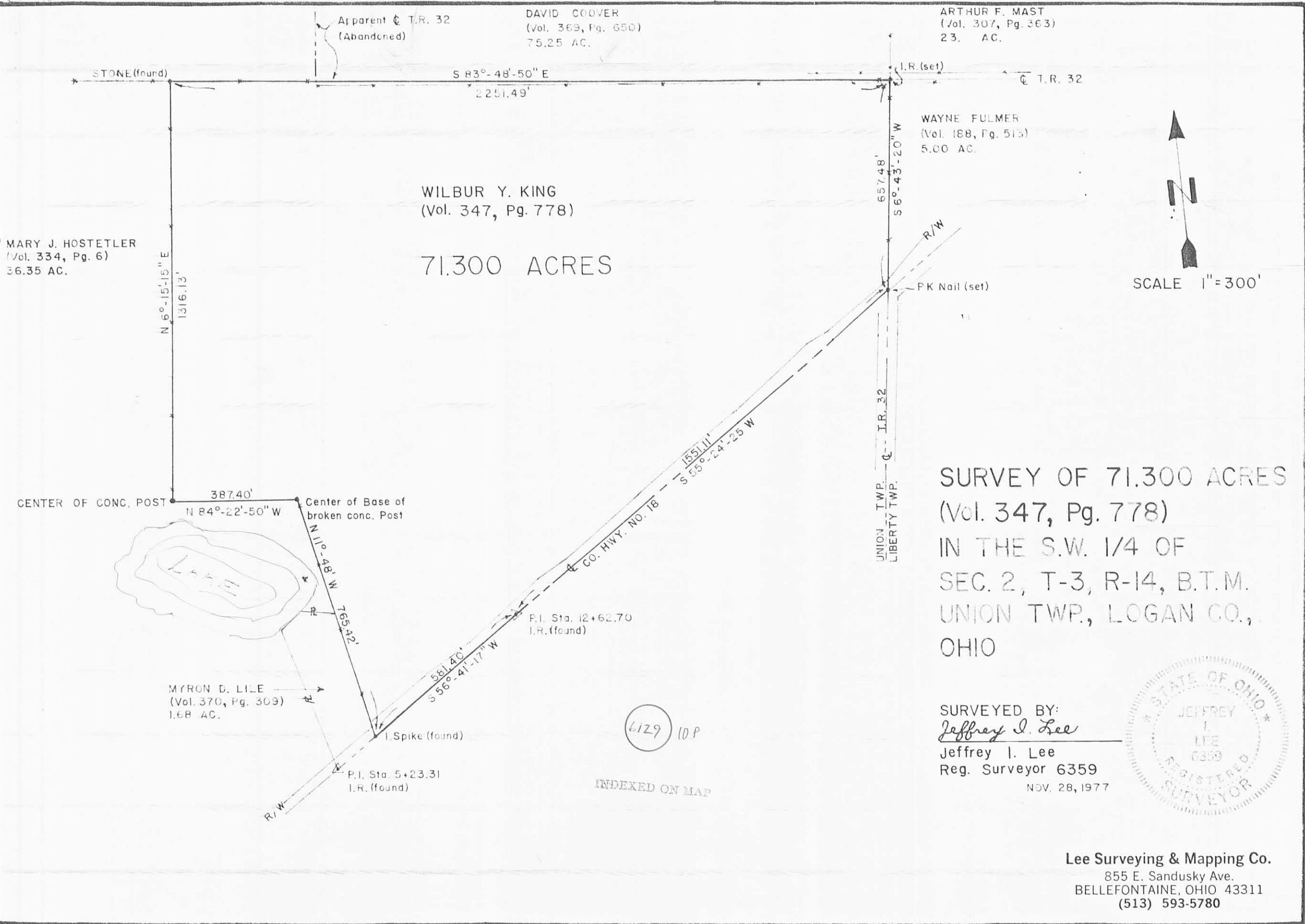


Prepared by:

Clayton M. Lee
Clayton M. Lee

Reg. Surveyor No. 6181
11-29-77





MARY J. HOSTETLER
(Vol. 334, Pg. 6)
36.35 AC.

WILBUR Y. KING
(Vol. 347, Pg. 778)

71.300 ACRES

DAVID COOVER
(Vol. 369, Pg. 650)
75.25 AC.

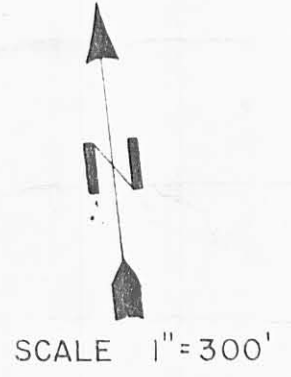
ARTHUR F. MAST
(Vol. 307, Pg. 363)
23. AC.

WAYNE FULMER
(Vol. 188, Pg. 513)
5.00 AC.

MYRON D. LILE
(Vol. 370, Pg. 309)
1.68 AC.

6129 10P

INDEXED ON MAP



SURVEY OF 71.300 ACRES
(Vol. 347, Pg. 778)
IN THE S.W. 1/4 OF
SEC. 2, T-3, R-14, B.T.M.
UNION TWP., LOGAN CO.,
OHIO

SURVEYED BY:
Jeffrey I. Lee
Jeffrey I. Lee
Reg. Surveyor 6359
NOV. 28, 1977



Lee Surveying & Mapping Co.
855 E. Sandusky Ave.
BELLEFONTAINE, OHIO 43311
(513) 593-5780

Lee Surveying and Mapping Co.



Farm Surveys • Lot Surveys • Topography • Subdivisions • Construction Layout

855 EAST SANDUSKY AVENUE
BELLEFONTAINE, OHIO 43311

(513) 593-5780

CLAYTON M. LEE, P.S.
JEFFREY I. LEE, P.S.

WILBUR KING SURVEY (15.888 ACRES)

Lying in the S E quarter of the southwest quarter of Section 2, T-3, R-14, B.M.S., Union Township, Logan County, Ohio and being a part of that Wilbur King acreage described in Volume 347, Page 778 of the Logan County Records of Deeds and being that 15.91 acres shown on Union Township plat of Section 2 (plat book Page 4) and more particularly described as follows:

Beginning at a spike set at the intersection of the center-lines of County Highway 18 and Township Road 32. Thence with the center-line of said County Hwy. 18, S55°-24'-25" W, a distance of 521.5 feet to a spike set at the extreme north corner of this survey and the True Point of Beginning.

THENCE, with the southwest line of a 2.93 acre tract (Volume 294, Page 39), S 34°-46'-35" E, a distance of 285.00 feet to an iron rod found at the northwest corner of a 1.00 acre tract (Volume 357, Page 192).

THENCE, with the west line of said 1.00 acre tract, S 6°-41'-35" W, a distance of 195.60 feet to the southwest corner of said 1.00 acre.

THENCE, with the south line of said 1.00 acre, 203.80 feet to an iron spike set in the center-line of Township Road 32.

THENCE, with said center-line, S 6°-41'-35" W, a distance of 577.28 feet to an iron rod found at the northeast corner of a 1.23 acre tract (Volume 351, Page 736).

THENCE, with the north line of the 1.23 acre tract and the north line of a 5.34 acre tract (Volume 201, Page 592), N 85°-41'-45" W, a distance of 675.34 feet to an iron rod set at the northeast corner of a 20.41 acre tract (also Volume 201, Page 592).

THENCE, with the northeast line of said 20.41 acres, N 38°-03'-15" W, a distance of 576.65 feet to a railroad spike set in the center-line of County Highway 18 at Station 13+76.03, passing an iron rod at 546.60 feet.

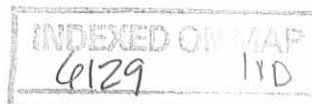
THENCE, with the original center-line of County Highway 18 (property line), N 55°-24'-25" E, a distance of 916.28 feet to the point of beginning. Containing 15.888 acres.

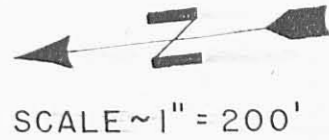
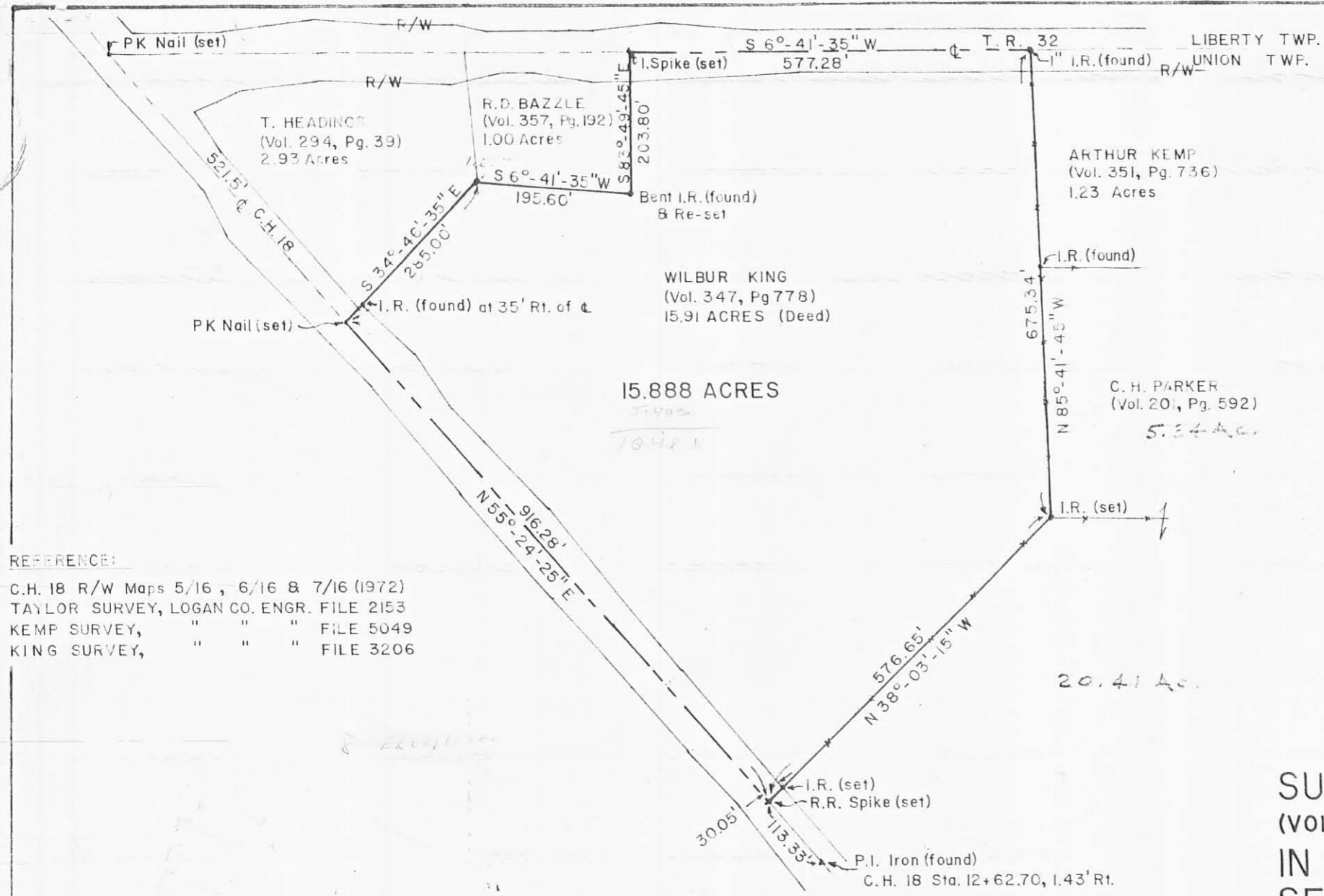
Last previous deed reference: Volume 347, Page 778.

Prepared by:



Clayton M. Lee
Clayton M. Lee
Reg. Surveyor No. 6181
11-26-77





REFERENCE:
 C.H. 18 R/W Maps 5/16, 6/16 & 7/16 (1972)
 TAYLOR SURVEY, LOGAN CO. ENGR. FILE 2153
 KEMP SURVEY, " " " FILE 5049
 KING SURVEY, " " " FILE 3206

SURVEY OF 15.888 ACRES
 (VOL. 347, PG. 778)
 IN THE SE 1/4 OF THE SW 1/4,
 SEC. 2, T-3, R-14 B.M.S.
 UNION TWP., LOGAN CO., OHIO

6129 11P

INDEXED ON MAP



SURVEYED BY:
Jeffrey I. Lee
 Jeffrey I. Lee
 Reg. Surveyor 6359
 11-15-1977

Lee Surveying & Mapping Co.
 855 E. Sandusky Ave.
 BELLEFONTAINE, OHIO 43311
 (513) 593-5780

REC'D 11-18-10 SMY CLK



EDWARDS SURVEYING
110 SOUTH MAIN STREET
URBANA, OHIO 43078
(937) 653-6508



LEGAL DESCRIPTION FOR BRAGG'S 0.024 ACRE TRACT

Being situate in the State of Ohio, County of Logan, Township of Union, and being a part of Southwest quarter of Section 2, Town 3, Range 14, and being more particularly described as follows:

Beginning for reference at a Mag nail found at the intersection of the centerline of County Road 18 (variable width right-of-way) and the Union - Liberty Township Line at Station 28+14.70, said Mag nail found also being at the Southwest corner of a 5.0 acre tract conveyed to Rickie L. Moore by Deed recorded in Official Record 301, Page 22, of the Logan County Records;

thence with the West line of said Moore's tract and the East line of said Union Township, N-6°47'26"-E, 174.77' (feet) to a 5/8" diameter iron bar with "LEE" cap found at a corner of a 65.18 acre tract conveyed to Roy L. Bragg by Deed recorded in Official Record 121, Page 15, Tract 1, of the Logan County Records, also being the Northeast corner of a 3.434 acre tract conveyed to Lisa J. Yoder by Deed recorded in Official Record 779, Page 911, of the Logan County Records;

thence with the North line of said Yoder's tract and the bounds of said Bragg's tract the following two (2) courses:

1. S-60°34'46"-W, 277.37' (feet) to an iron bar set;
2. S-65°15'17"-W, 186.24' (feet) to an iron bar set at the **PRINCIPLE PLACE OF BEGINNING** for the tract hereinafter described;

thence continuing with the common boundary between said Bragg's and Yoder's tracts the following two (2) courses:

1. S-65°15'17"-W, 23.27' (feet) to a point within an existing garage;
2. N-76°19'08"-W, 144.00' (feet) to a 5/8" diameter iron bar with "LEE" cap found, passing for reference an iron bar set at 30.00' (feet);

thence S-81°24'49"-E, 162.87' (feet) to the place of beginning.

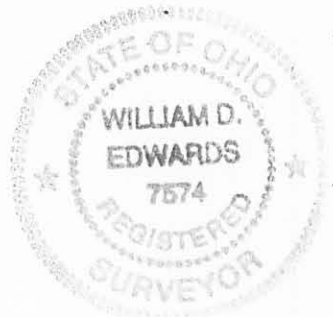
Containing 0.024 acre, but being subject to the rights of all legal highways and all easements of record.

Being a part of a 65.18 acre tract conveyed to Roy L. Bragg by Deed recorded in Official Record 121, Page 15, Tract 1, of the Logan County Records.

The herein described tract is to be attached to Yoder's adjoining 3.434 acre tract and is not to be used as a separate and independent parcel.

The foregoing description prepared by and in accordance with a Survey by William D. Edwards, Professional Surveyor No. 7574; November 12, 2010. All iron bars set are 5/8"x30" iron re-bar with a yellow plastic cap stamped "EDWARDS PS 4792 PS 7574". The basis of bearings for the herein described tract is the East line of Union Township per Official Record 779, Page 911, of the Logan County Records (S-6°47'26"-W).

William D. Edwards
Professional Surveyor No. 7574



INDEXED ON MAP
6129 12D

