

REV ID 4-7-05 SVM/OK

# Lee Surveying and Mapping Co., Inc.

Land Surveys • Topography • Subdivisions • Construction Layout

117 N. Madriver St.  
Bellefontaine OH 43311



Phone: (937) 593-7335  
Fax: (937) 593-7444

## LAGOS 2.004 ACRE TRACT A

Lying in Section 28, Town 4, Range 13, Union Township, Logan County, Ohio.

Being out of the Matina K. Lagos original 80.353 acre tract as deeded and described in Official Record 569, Page 475 of the Logan County Records of Deeds and being more particularly described as follows:

Beginning at the a 1/2 inch square iron bolt found on the south line of Section 28 at the southeast corner of the said 80.353 acre tract on the center-line of County Road 31 (60 feet wide) and the south line of Logan County and the north line of Champaign County.

THENCE, with the center-line of County Road 31, N 6°-39'-16"E, a distance of 200.01 feet to a MAG nail set at THE TRUE POINT OF BEGINNING.

THENCE, N 84°-32'-00"W, a distance of 436.30 feet to a 5/8 inch iron rod set, passing a 5/8 inch iron rod set at 30.00 feet.

THENCE, N 6°-28'-29"E, a distance of 200.00 feet to a 5/8 inch iron rod set.

THENCE, S 84°-32'-00"E, a distance of 436.92 feet to a MAG nail set, passing a 5/8 inch iron rod set at 406.92 feet.

THENCE, with the center-line of County Road 31, S 6°-39'-16"W, a distance of 200.01 feet to the point of beginning.

Containing 2.004 acres of which 0.138 acre is within the highway right-of-way.

The basis for bearings is the south line of Logan County being N 84°-32'-00"W, and all other bearings are from angles and distances measured in a field survey by Lee Surveying and Mapping Co., Inc. on December 21, 2004



Description prepared by:

Jeffrey I. Lee  
Professional Surveyor 6359  
December 21, 2004  
Revised April 4, 2005

3346124

INDEXED ON MAP  
5202 1D-1

REC'D 4: 7-05 SWM OK  
**Lee Surveying and Mapping Co., Inc.**

Land Surveys • Topography • Subdivisions • Construction Layout

117 N. Madriver St.  
Bellefontaine OH 43311



Phone: (937) 593-7335  
Fax: (937) 593-7444

**LAGOS  
2.001 ACRE  
TRACT B**

Lying in Section 28, Town 4, Range 13, Union Township, Logan County, Ohio.

Being out of the Matina K. Lagos original 80.353 acre tract as deeded and described in Official Record 569, Page 475 of the Logan County Records of Deeds and being more particularly described as follows:

Beginning at the a 1/2 inch square iron bolt found on the south line of Section 28 at the southeast corner of the said 80.353 acre tract on the center-line of County Road 31 (60 feet wide) and the south line of Logan County and the north line of Champaign County.

THENCE, with the south line of Section 28 and the south line of Logan County and the north line of Champaign County, N 84°-32'-00"W, a distance of 435.67 feet to a 5/8 inch iron rod set, passing a 5/8 inch iron rod found at 30.00 feet.

THENCE, N 6°-28'-29"E, a distance of 200.00 feet to a 5/8 inch iron rod set.

THENCE, S 84°-32'-00"E, a distance of 436.30 feet to a MAG nail set, passing a 5/8 inch iron rod set at 406.30 feet.

THENCE, with the center-line of County Road 31, S 6°-39'-16"W, a distance of 200.01 feet to the point of beginning.


Containing 2.001 acres of which 0.138 acre is within the highway right-of-way.

The basis for bearings is the south line of Logan County being N 84°-32'-00"W, and all other bearings are from angles and distances measured in a field survey by Lee Surveying and Mapping Co., Inc. on December 21, 2004



ORIGINAL STAMP IN GREEN

Description prepared by:

  
Jeffrey I. Lee  
Professional Surveyor 6359  
December 21, 2004  
Revised April 4, 2005

3346124

INDEXED ON MAP  
5202 1D-2

REC'D 4-7-05 SML/OK  
**Lee Surveying and Mapping Co., Inc.**

Land Surveys • Topography • Subdivisions • Construction Layout

117 N. Madriver St.  
Bellefontaine OH 43311



Phone: (937) 593-7335  
Fax: (937) 593-7444

**LAGOS  
1.505 ACRE TRACT  
TRACT C**

Lying in Section 28, Town 4, Range 13, Union Township, Logan County, Ohio.

Being out of the Matina K. Lagos original 80.353 acre tract as deeded and described in Official Record 569, Page 475 of the Logan County Records of Deeds and being more particularly described as follows:

Beginning at the a 1/2 inch square iron bolt found on the south line of Section 28 at the southeast corner of the said 80.353 acre tract on the center-line of County Road 31 (60 feet wide) and the south line of Logan County and the north line of Champaign County.

THENCE, with the center-line of County Road 31, N 6°-39'-16"E, a distance of 400.02 feet to a MAG nail set at THE TRUE POINT OF BEGINNING.

THENCE, N 84°-32'-00"W, a distance of 436.92 feet to a 5/8 inch iron rod set, passing a 5/8 inch iron rod set at 30.00.

THENCE, N 6°-28'-29"E, a distance of 150.00 feet to a 5/8 inch iron rod set.

THENCE, S 84°-32'-00"E, a distance of 437.39 feet to a MAG nail set, passing a 5/8 inch iron rod set at 407.39 feet.

THENCE, with the center-line of County Road 31, S 6°-39'-16"W, a distance of 150.01 feet to the point of beginning.

Containing 1.505 acres of which 0.103 acre is within the highway right-of-way.

The basis for bearings is the south line of Logan County being N 84°-32'-00"W, and all other bearings are from angles and distances measured in a field survey by Lee Surveying and Mapping Co., Inc. on December 21, 2004



Description prepared by:

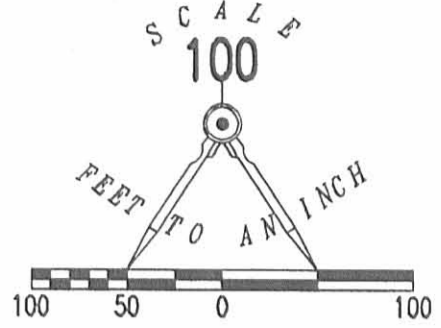
A handwritten signature in black ink, appearing to read 'Jeffrey I. Lee'.

Jeffrey I. Lee  
Professional Surveyor 6359  
December 21, 2004  
Revised April 4, 2005

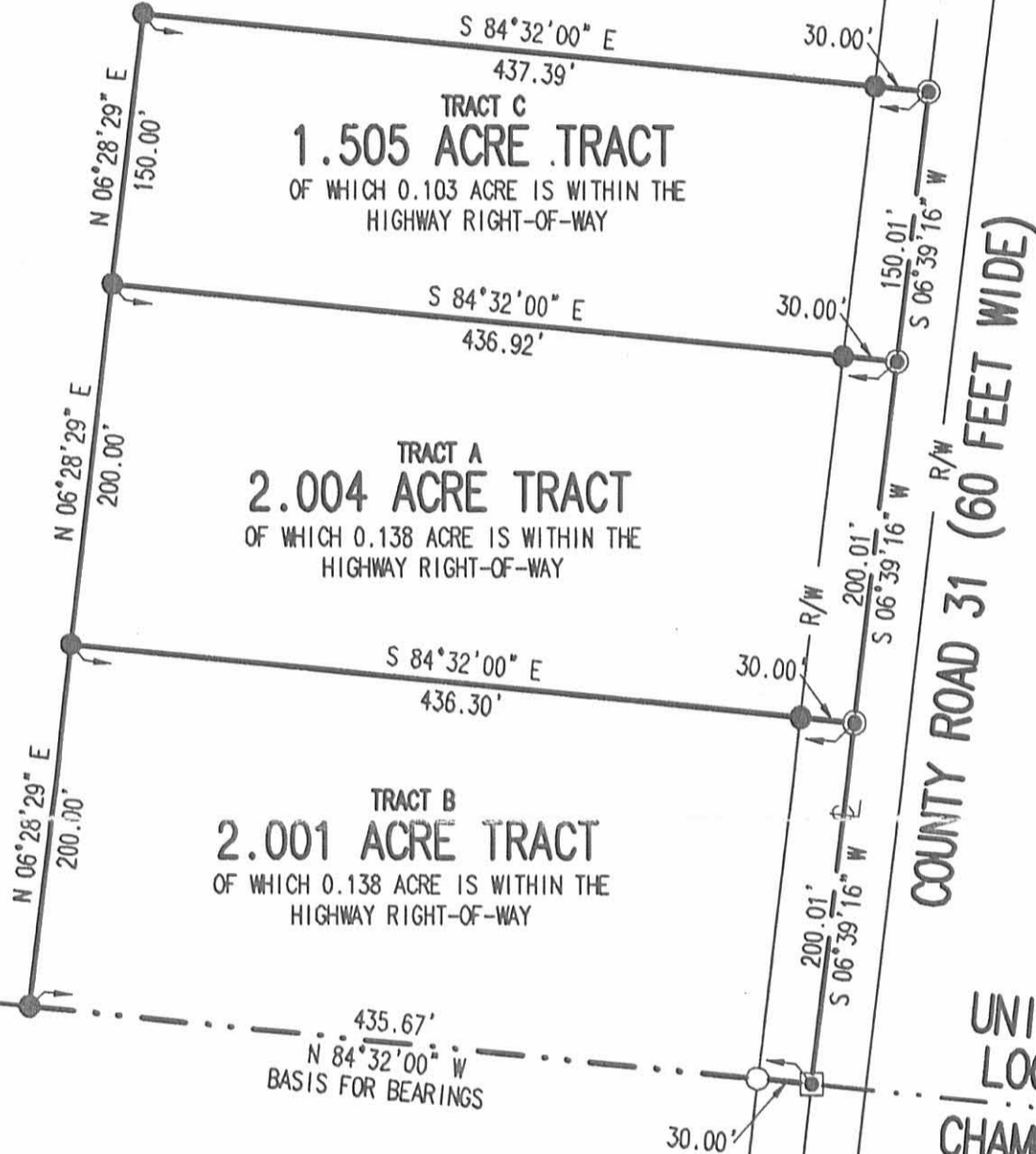
3346124

INDEXED ON MAP  
5202 1D-3

REV'D 4-7-05 SML



MATINA K. LAGOS  
ORIGINAL 80.353 ACRE  
O.R. 569, PG. 475



SECTION 28  
SECTION 27

UNION TOWNSHIP  
LOGAN COUNTY  
CHAMPAIGN COUNTY  
HARRISON TOWNSHIP

LEGEND

- MAG NAIL SET
- 5/8 INCH IRON ROD SET
- 5/8 INCH IRON ROD FOUND
- 1/2 INCH SQUARE BOLT FOUND

A SURVEY OF 3 TRACTS OUT OF THE  
MATINA K. LAGOS  
ORIGINAL 80.353 ACRE TRACT  
OFFICIAL RECORD 569, PAGE 475  
SECTION 28, TOWN 4, RANGE 13  
UNION TOWNSHIP  
LOGAN COUNTY, OHIO

SURVEYED BY:



JEFFREY I. LEE  
PROFESSIONAL SURVEYOR 6359  
DECEMBER 21, 2004  
REVISED APRIL 1, 2005

COPYRIGHT 2004 BY:  
LEE SURVEYING & MAPPING CO., INC.  
117 North Madriver Street  
BELLEFONTAINE, OHIO 43311  
(937) 593-7335

ORIGINAL STAMP IN GREEN

2 WORKING DAYS  
**BEFORE YOU DIG**  
CALL TOLL FREE **800-362-2764**  
OHIO UTILITIES PROTECTION SERVICE.

1975 - 2005  
**30**  
YEARS OF  
EXCELLENCE  
Lee Surveying  
& Mapping Co.

ADW D413 3346124R L-3346124-3

INDEXED ON MAP  
5202 1P

REC'D 12-30-04 JML OK

# Lee Surveying and Mapping Co., Inc.

Land Surveys • Topography • Subdivisions • Construction Layout

117 N. Madriver St.  
Bellefontaine OH 43311



Phone: (937) 593-7335  
Fax: (937) 593-7444

## LAGOS 1.500 ACRE TRACT

Lying in Section 28, Town 4, Range 13, Union Township, Logan County, Ohio.

Being out of the Matina K. Lagos original 80.353 acre tract as deeded and described in Official Record 569, Page 475 in the Logan County Records of Deeds and being more particularly described as follows:

Beginning at the a 1/2 inch iron square bolt found on the south line of Section 28 at the southeast corner of the said 80.353 acre tract on the center-line of County Road 31 (60 feet wide) and the south line of Logan County and the north line of Champaign County.

THENCE, with the center-line of County Road 31, N 6°-28'-29"E, a distance of 400.00 feet to a MAG nail set at THE TRUE POINT OF BEGINNING.

THENCE, N 84°-32'-00"W, a distance of 435.67 feet to a 5/8 inch iron rod set, passing a 5/8 inch iron rod set at 30.00.

THENCE, N 6°-28'-29"E, a distance of 150.00 feet to a 5/8 inch iron rod set.

THENCE, S 84°-32'-00"E, a distance of 435.67 feet to a MAG nail set, passing a 5/8 inch iron rod set at 405.67 feet.

THENCE, with the center-line of County Road 31, S 6°-28'-29"W, a distance of 150.00 feet to the point of beginning.

Containing 1.500 acres of which 0.103 acre is within the highway right-of-way.

The basis for bearings is the south line of Logan County being N 84°-32'-00"W, and all other bearings are from angles and distances measured in a field survey by Lee Surveying and Mapping Co., Inc. on December 21, 2004



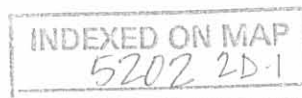
ORIGINAL STAMP IN GREEN

Description prepared by:

A handwritten signature in black ink, appearing to read 'Jeffrey I. Lee', written over a faint circular stamp.

Jeffrey I. Lee  
Professional Surveyor 6359  
December 21, 2004

3346124



DEED 12-30-04 SM OK

# Lee Surveying and Mapping Co., Inc.

Land Surveys • Topography • Subdivisions • Construction Layout

117 N. Madriver St.  
Bellefontaine OH 43311



Phone: (937) 593-7335  
Fax: (937) 593-7444

## LAGOS 2.000 ACRE TRACT A

Lying in Section 28, Town 4, Range 13, Union Township, Logan County, Ohio.

Being out of the Matina K. Lagos original 80.353 acre tract as deeded and described in Official Record 569, Page 475 in the Logan County Records of Deeds and being more particularly described as follows:

Beginning at the a 1/2 inch iron square bolt found on the south line of Section 28 at the southeast corner of the said 80.353 acre tract on the center-line of County Road 31 (60 feet wide) and the south line of Logan County and the north line of Champaign County.

THENCE, with the center-line of County Road 31, N 6°-28'-29"E, a distance of 200.00 feet to a MAG nail set at THE TRUE POINT OF BEGINNING.

THENCE, N 84°-32'-00"W, a distance of 435.67 feet to a 5/8 inch iron rod set, passing a 5/8 inch iron rod set at 30.00 feet.

THENCE, N 6°-28'-29"E, a distance of 200.00 feet to a 5/8 inch iron rod set.

THENCE, S 84°-32'-00"E, a distance of 435.67 feet to a MAG nail set, passing a 5/8 inch iron rod set at 405.67 feet.

THENCE, with the center-line of County Road 31, S 6°-28'-29"W, a distance of 200.00 feet to the point of beginning

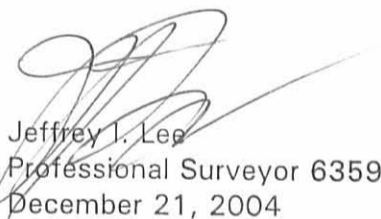
Containing 2.000 acres of which 0.138 acre is within the highway right-of-way.

The basis for bearings is the south line of Logan County being N 84°-32'-00"W, and all other bearings are from angles and distances measured in a field survey by Lee Surveying and Mapping Co., Inc. on December 21, 2004

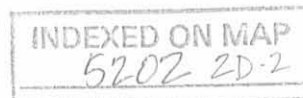


ORIGINAL STAMP IN GREEN

Description prepared by:

  
Jeffrey I. Lee  
Professional Surveyor 6359  
December 21, 2004

3346124





REC'D 12-30-04 8M OK  
**Lee Surveying and Mapping Co., Inc.**

Land Surveys • Topography • Subdivisions • Construction Layout

117 N. Madriver St.  
Bellefontaine OH 43311



Phone: (937) 593-7335  
Fax: (937) 593-7444

**LAGOS  
2.000 ACRE  
TRACT B**

Lying in Section 28, Town 4, Range 13, Union Township, Logan County, Ohio.

Being out of the Matina K. Lagos original 80.353 acre tract as deeded and described in Official Record 569, Page 475 in the Logan County Records of Deeds and being more particularly described as follows:

Beginning at the a 1/2 inch iron square bolt found on the south line of Section 28 at the southeast corner of the said 80.353 acre tract on the center-line of County Road 31 (60 feet wide) and the south line of Logan County and the north line of Champaign County.

THENCE, with the south line of Section 28 and the south line of Logan County and the north line of Champaign County, N 84°-32'-00"W, a distance of 435.67 feet to a 5/8 inch iron rod set, passing a 5/8 inch iron rod found at 30.00 feet.

THENCE, N 6°-28'-29"E, a distance of 200.00 feet to a 5/8 inch iron rod set.

THENCE, S 84°-32'-00"E, a distance of 435.67 feet to a MAG nail set, passing a 5/8 inch iron rod set at 405.67 feet.

THENCE, with the center-line of County Road 31, S 6°-28'-29"W, a distance of 200.00 feet to the point of beginning.

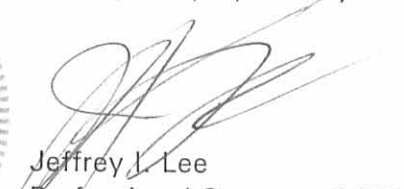
Containing 2.000 acres of which 0.138 acre is within the highway right-of-way.

The basis for bearings is the south line of Logan County being N 84°-32'-00"W, and all other bearings are from angles and distances measured in a field survey by Lee Surveying and Mapping Co., Inc. on December 21, 2004



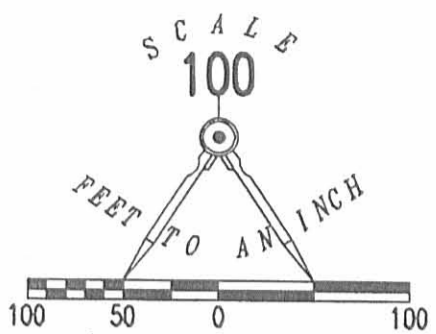
ORIGINAL STAMP IN GREEN

Description prepared by:

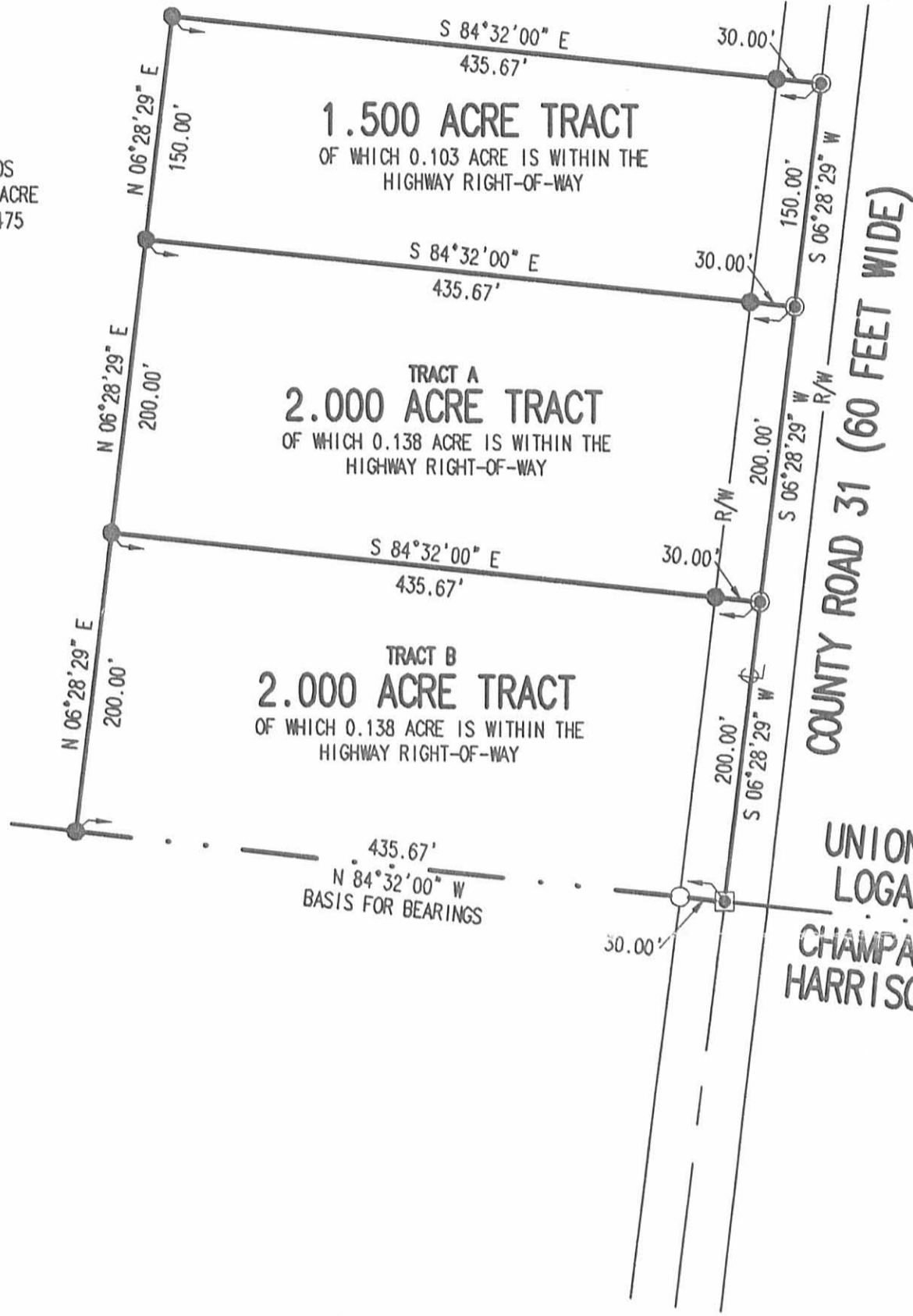
  
Jeffrey L. Lee  
Professional Surveyor 6359  
December 21, 2004

3346124





MATINA K. LAGOS  
ORIGINAL 80.353 ACRE  
O.R. 569, PG. 475



SECTION 28  
SECTION 27

UNION TOWNSHIP  
LOGAN COUNTY  
CHAMPAIGN COUNTY  
HARRISON TOWNSHIP

LEGEND

- MAG NAIL SET
- 5/8 INCH IRON ROD SET
- 5/8 INCH IRON ROD FOUND
- 1/2 INCH SQUARE BOLT FOUND

A SURVEY OF 3 TRACTS OUT OF THE  
MATINA K. LAGOS  
ORIGINAL 80.353 ACRE TRACT  
OFFICIAL RECORD 569, PAGE 475  
SECTION 28, TOWN 4, RANGE 13  
UNION TOWNSHIP  
LOGAN COUNTY, OHIO

SURVEYED BY:

JEFFREY I. LEE  
PROFESSIONAL SURVEYOR 6359  
DECEMBER 21, 2004



ORIGINAL STAMP IN GREEN

COPYRIGHT 2004 BY:  
LEE SURVEYING & MAPPING CO., INC.  
117 North Madriver Street  
BELLEFONTAINE, OHIO 43311  
(937) 593-7335

ADW D413 3346124 L-3346124-3

2 WORKING DAYS  
**BEFORE YOU DIG**  
CALL TOLL FREE **800-362-2764**  
OHIO UTILITIES PROTECTION SERVICE

INDEXED ON MAP  
5202 2P

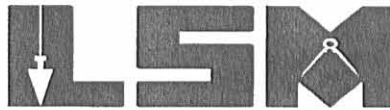


REC'D 4-7-05 8M/OK

# Lee Surveying and Mapping Co., Inc.

Land Surveys • Topography • Subdivisions • Construction Layout

117 N. Madriver St.  
Bellefontaine OH 43311



Phone: (937) 593-7335  
Fax: (937) 593-7444

**1975-2005 - 30 YEARS OF EXCELLENCE**

**LAGOS  
TRACT D  
5.000 ACRES**

Lying in Section 28, Town 4, Range 13, Union Township, Logan County, Ohio.

Being out of the Matina K. Lagos original 80.353 acre tract as deeded and described in Official Record 569, Page 475 of the Logan County Records of Deeds and being more particularly described as follows:

Beginning at a 1/2 inch square iron bolt found on the south line of Section 28 at the southeast corner of the said 80.353 acre tract on the center-line of County Highway 31 (60 feet wide) and the south line of Union Township, Logan County and the north line of Harrison Township, Champaign County.

THENCE, with the center-line of County Highway 31, N 6°-39'-16"E, a distance of 1546.32 feet to a MAG nail set at the TRUE POINT OF BEGINNING.

THENCE, N 83°-43'-30"W, a distance of 871.22 feet to a 5/8 inch iron rod set, passing a 5/8 inch iron rod set at 30.00 feet.

THENCE, N 6°-39'-16"E, a distance of 250.00 feet to a 5/8 inch iron rod set.

THENCE, S 83°-43'-30"E, a distance of 871.22 feet to a MAG nail set on the center-line of County Highway 31, passing a 5/8 inch iron rod set at 841.22 feet

THENCE, with the center-line of County Highway 31, S 6°-39'-16"W, a distance of 250.00 feet to the point of beginning.

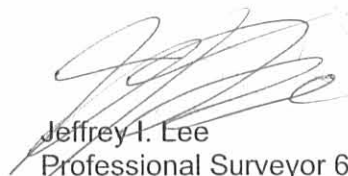
Containing 5.000 acres, of which 0.172 acre is within the highway right-of-way.

The basis for bearings is the south line of Logan County, being N 84°-32'-00"W, and all other bearings are from angles and distances measured in a field survey by Lee Surveying and Mapping Co., Inc. on April 1, 2005.

Description prepared by:



ORIGINAL STAMP IN GREEN

  
Jeffrey I. Lee  
Professional Surveyor 6359  
April 4, 2005

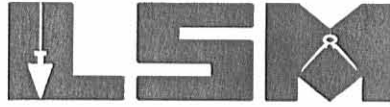
L-3346



REV'D 4-7-05 SML OK  
**Lee Surveying and Mapping Co., Inc.**

Land Surveys • Topography • Subdivisions • Construction Layout

117 N. Madriver St.  
Bellefontaine OH 43311



Phone: (937) 593-7335  
Fax: (937) 593-7444

**1975-2005 - 30 YEARS OF EXCELLENCE**

**LAGOS  
TRACT E  
5.000 ACRES**

Lying in Section 28, Town 4, Range 13, Union Township, Logan County, Ohio.

Being out of the Matina K. Lagos original 80.353 acre tract as deeded and described in Official Record 569, Page 475 of the Logan County Records of Deeds and being more particularly described as follows:

Beginning at a 1/2 inch square iron bolt found on the south line of Section 28 at the southeast corner of the said 80.353 acre tract on the center-line of County Highway 31 (60 feet wide) and the south line of Union Township, Logan County and the north line of Harrison Township, Champaign County.

THENCE, with the center-line of County Highway 31, N 6°-39'-16"E, a distance of 1796.32 feet to a MAG nail set at the TRUE POINT OF BEGINNING.

THENCE, N 83°-43'-30"W, a distance of 871.22 feet to a 5/8 inch iron rod set, passing a 5/8 inch iron rod set at 30.00 feet.

THENCE, N 6°-39'-16"E, a distance of 250.00 feet to a 5/8 inch iron rod set.

THENCE, S 83°-43'-30"E, a distance of 871.22 feet to a MAG nail set on the center-line of County Highway 31, passing a 5/8 inch iron rod set at 841.22 feet

THENCE, with the center-line of County Highway 31, S 6°-39'-16"W, a distance of 250.00 feet to the point of beginning.

Containing 5.000 acres, of which 0.172 acre is within the highway right-of-way.

The basis for bearings is the south line of Logan County, being N 84°-32'-00"W, and all other bearings are from angles and distances measured in a field survey by Lee Surveying and Mapping Co., Inc. on April 1, 2005.



ORIGINAL STAMP IN GREEN

Description prepared by:

  
Jeffrey I. Lee  
Professional Surveyor 6359  
April 4, 2005

L-3346

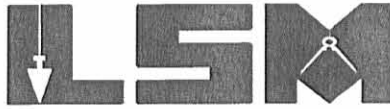
INDEXED ON MAP  
5202 3D-2

RECID 4-7-05 SMY OK

# Lee Surveying and Mapping Co., Inc.

Land Surveys • Topography • Subdivisions • Construction Layout

117 N. Madriver St.  
Bellefontaine OH 43311



Phone: (937) 593-7335  
Fax: (937) 593-7444

**1975-2005 - 30 YEARS OF EXCELLENCE**

**LAGOS  
TRACT F  
5.000 ACRES**

Lying in Section 28, Town 4, Range 13, Union Township, Logan County, Ohio.

Being out of the Matina K. Lagos original 80.353 acre tract as deeded and described in Official Record 569, Page 475 of the Logan County Records of Deeds and being more particularly described as follows:

Beginning at a 1/2 inch square iron bolt found on the south line of Section 28 at the southeast corner of the said 80.353 acre tract on the center-line of County Highway 31 (60 feet wide) and the south line of Union Township, Logan County and the north line of Harrison Township, Champaign County.

THENCE, with the center-line of County Highway 31, N 6°-39'-16"E, a distance of 2046.32 feet to a MAG nail set at the TRUE POINT OF BEGINNING.

THENCE, N 83°-43'-30"W, a distance of 871.22 feet to a 5/8 inch iron rod set, passing a 5/8 inch iron rod set at 30.00 feet.

THENCE, N 6°-39'-16"E, a distance of 250.00 feet to a 5/8 inch iron rod set.

THENCE, S 83°-43'-30"E, a distance of 871.22 feet to a MAG nail set on the center-line of County Highway 31, passing a 5/8 inch iron rod set at 841.22 feet

THENCE, with the center-line of County Highway 31, S 6°-39'-16"W, a distance of 250.00 feet to the point of beginning.

Containing 5.000 acres, of which 0.172 acre is within the highway right-of-way.

The basis for bearings is the south line of Logan County, being N 84°-32'-00"W, and all other bearings are from angles and distances measured in a field survey by Lee Surveying and Mapping Co., Inc. on April 1, 2005.



ORIGINAL STAMP IN GREEN

Description prepared by:

A handwritten signature in black ink, appearing to read 'Jeffrey I. Lee'.

Jeffrey I. Lee  
Professional Surveyor 6359  
April 4, 2005

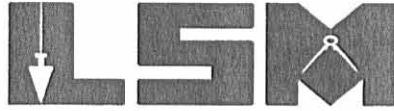
L-3346

INDEXED ON MAP  
5202 3D-3

# Lee Surveying and Mapping Co., Inc.

Land Surveys • Topography • Subdivisions • Construction Layout

117 N. Madriver St.  
Bellefontaine OH 43311



Phone: (937) 593-7335  
Fax: (937) 593-7444

**1975-2005 - 30 YEARS OF EXCELLENCE**

**LAGOS  
TRACT G  
8.000 ACRES**

Lying in Section 28, Town 4, Range 13, Union Township, Logan County, Ohio.

Being out of the Matina K. Lagos original 80.353 acre tract as deeded and described in Official Record 569, Page 475 of the Logan County Records of Deeds and being more particularly described as follows:

Beginning at a 1/2 inch square iron bolt found on the south line of Section 28 at the southeast corner of the said 80.353 acre tract on the center-line of County Highway 31 (60 feet wide) and the south line of Union Township, Logan County and the north line of Harrison Township, Champaign County.

THENCE, with the center-line of County Highway 31, N 6°-39'-16"E, a distance of 2296.32 feet to a MAG nail set at the TRUE POINT OF BEGINNING.

THENCE, N 83°-43'-30"W, a distance of 871.22 feet to a 5/8 inch iron rod set, passing a 5/8 inch iron rod set at 30.00 feet.

THENCE, N 6°-39'-16"E, a distance of 400.00 feet to a 5/8 inch iron rod set.

THENCE, with the south line of the Timothy N. Watkins original 102.38 acre tract (O.R. 17, Pg. 56), S 83°-43'-30"E, a distance of 871.22 feet to a railroad spike found on the center-line of County Highway 31 at the northeast corner of the aforesaid original 80.353 acre tract, passing a 5/8 inch iron rod set at 841.22 feet.

THENCE, with the center-line of County Highway 31, S 6°-39'-16"W, a distance of 400.00 feet to the point of beginning.

Containing 8.000 acres, of which 0.275 acre is within the highway right-of-way.

The basis for bearings is the south line of Logan County, being N 84°-32'-00"W, and all other bearings are from angles and distances measured in a field survey by Lee Surveying and Mapping Co., Inc. on April 1, 2005.



ORIGINAL STAMP IN GREEN

Description prepared by:

A handwritten signature in black ink, appearing to read 'Jeffrey I. Lee'.

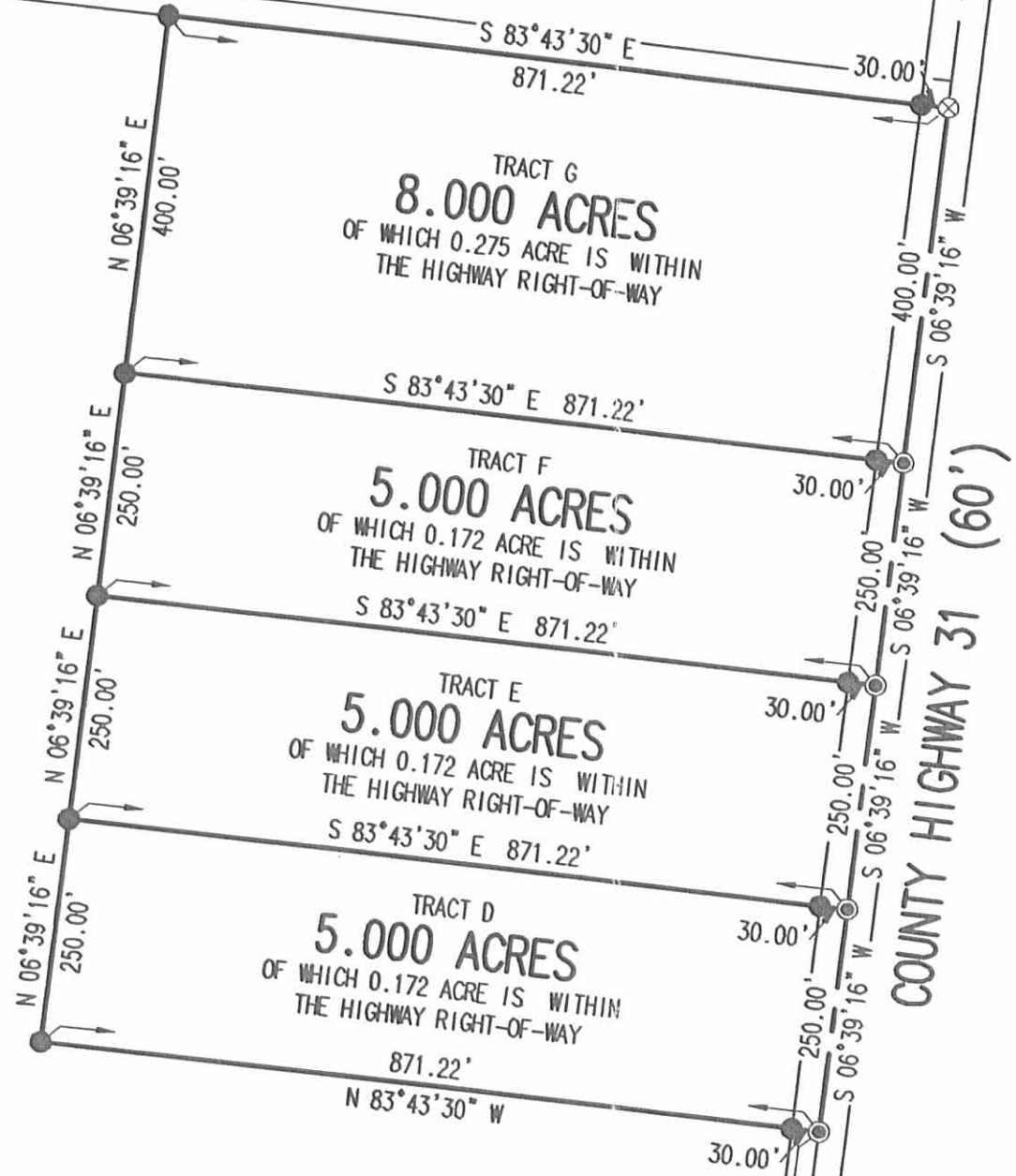
Jeffrey I. Lee  
Professional Surveyor 6359  
April 4, 2005



L-3346

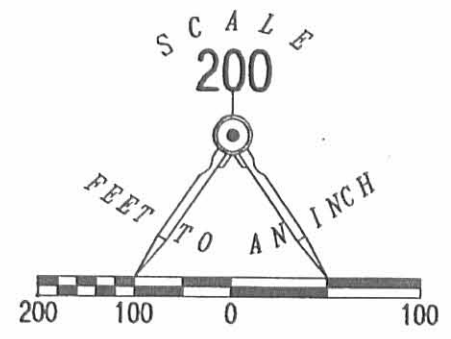
REC'D 4-7-05 SVN OK

TIMOTHY N. WATKINS  
ORIGINAL 102.38 ACRES  
O.R. 17, PG. 56



MATINA K. LAGOS  
ORIGINAL 80.353 ACRES  
O.R. 569, PG. 475

LOGAN COUNTY - UNION TOWNSHIP  
N 84°32'00" W  
(BASIS FOR BEARINGS)  
CHAMPAIGN COUNTY - HARRISON TOWNSHIP  
SECTION 28  
SECTION 27



- LEGEND:
- 1/2 INCH SQUARE IRON BOLT FOUND
  - ⊗ RAILROAD SPIKE FOUND
  - 5/8 INCH IRON ROD SET
  - ⊙ MAG NAIL SET

SURVEY OF FOUR TRACTS OUT OF THE  
MATINA K. LAGOS  
ORIGINAL 80.353 ACRE TRACT  
OFFICIAL RECORD 569, PAGE 475  
SECTION 28, TOWN 4, RANGE 13  
UNION TOWNSHIP  
LOGAN COUNTY, OHIO

SURVEYED BY:



*(Signature)*  
JEFFREY I. LEE  
PROFESSIONAL SURVEYOR 6359  
APRIL 1, 2005

COPYRIGHT 2005 BY:  
LEE SURVEYING & MAPPING CO., INC.  
117 North Madriver Street  
BELLEFONTAINE, OHIO 43311  
(937) 593-7335

ORIGINAL STAMP IN GREEN

KSR D0405 3346035 L-3346-3

2 WORKING DAYS  
**BEFORE YOU DIG**  
CALL TOLL FREE **800-362-2764**  
OHIO UTILITIES PROTECTION SERVICE

INDEXED ON MAP  
5202 3P



Strayer to Remsberg Survey Description  
December, 1972

Tract One:

Being situated in Union Township, Logan County, Ohio; and being a part of Section 28, Town 4, Range 13.

Beginning at a concrete Monument at the southwest corner of the southeast quarter of Section 28. Said beginning point is in the line between Logan and Champaign Counties.

Thence with the west line of said southeast quarter of Section 28, N 6° - 58'E 2716.0 feet to a corner post.

Thence with the north line of said southeast quarter of Section 28, S 83° - 32'E 1300.7 feet to a point in the center of County Road 31.

Thence with the center of County Road 31 S 6° - 32'W 2698.0 feet to a point in the south line of said southeast quarter of Section 28.

Thence with the south line of said southeast quarter of Section 28 (also the line between Logan and Champaign Counties) N 84° - 32'W 1321.5 feet to the place of beginning.

Containing all of a 81.54 acre tract.

Tract Two:

Being situated in Harrison Township, Champaign County, Ohio; and being a part of Section 27, Town 4, Range 13.

Beginning at a concrete Monument at the quarter section corner in the north line of Section 27. (Said beginning point is also in the line between Logan and Champaign Counties.

Thence with the north line of Section 27 N 88° - 24'W 276.5 feet to a iron.

Thence with the center of County Road 52 S 9° - 30'W 663.0 feet to a iron.

Thence S 83° - 49'E 1632.0 feet to a iron in the center of County Road 44, passing thru a concrete corner post at 36.0 feet and a iron at 1607.0 feet.

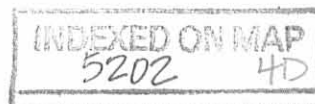
Thence with the center of County Road 44 N 6° - 32'E 676.0 feet to a point in the north line of Section 27.

Thence with the north line of Section 27 (also the line between Logan and Champaign Counties) N 84° - 32'W 1321.5 feet to the place of beginning.

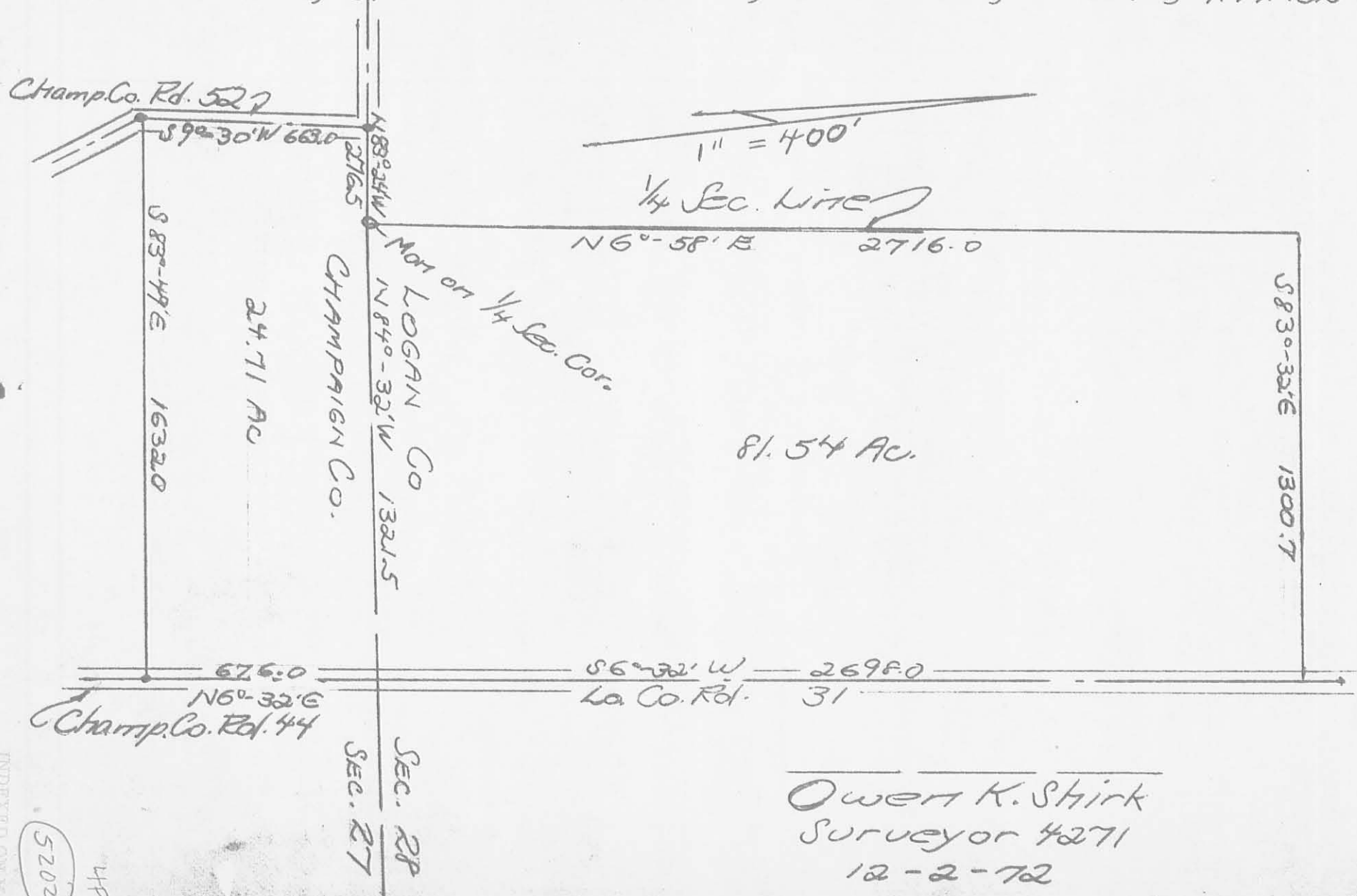
Containing 24.71 acres more or less. Being surveyed from a 45.00 acre tract.

---

Owen K. Shirk  
Surveyor 4271



STRAYER TO REMSBERG SURVEY  
 UNION TWP, LOGAN CO., OHIO, SECTION 28, TOWN 4, RANGE 13  
 HARRISON TWP., CHAMPAIGN CO., OHIO, SECTION 27, TOWN 4, RANGE 13



Owen K. Shirk  
 Surveyor 4271  
 12-2-72

INDEXED ON MAP  
 5202  
 HP