

1/4 CORNER at Smith - AVERY LINE



Stamped Nov 19 1942 R.H.R.

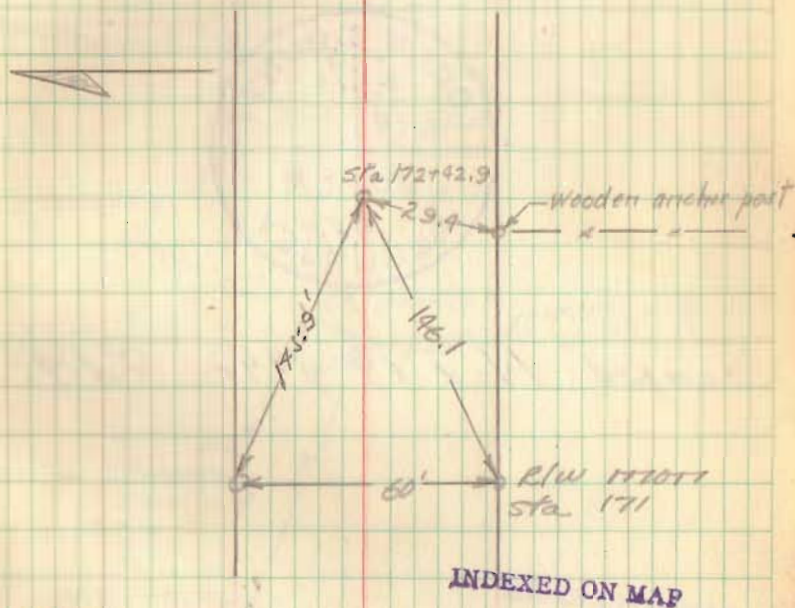
G. H. Skoop  
F. Hurst  
R. McGarvey  
9-16-42

11

Rd 93 & Cor. 13, 14 T3 R14

Found stone on top of large  
boulder with broken brick around.

Set concrete 171 on 4" below surface



Elevation: 1116.95

2627 Union  
Twp.

INDEXED ON MAP