

July - 25 - 1936
 cloudy - warm
 F. Wright
 W. Wright
 Mr. Yoder

55

Yoder - Williamson survey
 Union Twp
 Sec. 18 T. 4 R. 13

- A - Stone found Corner to 4 sections
- B - Bolt (Round Head) Placed.
- C - 2" x 2" x 24" Hub Placed
- D - 7/8" Iron (Reinforcing Bar) Placed

Note:

After checking in office

BC and AD = 840.0'

C Moved 6' East

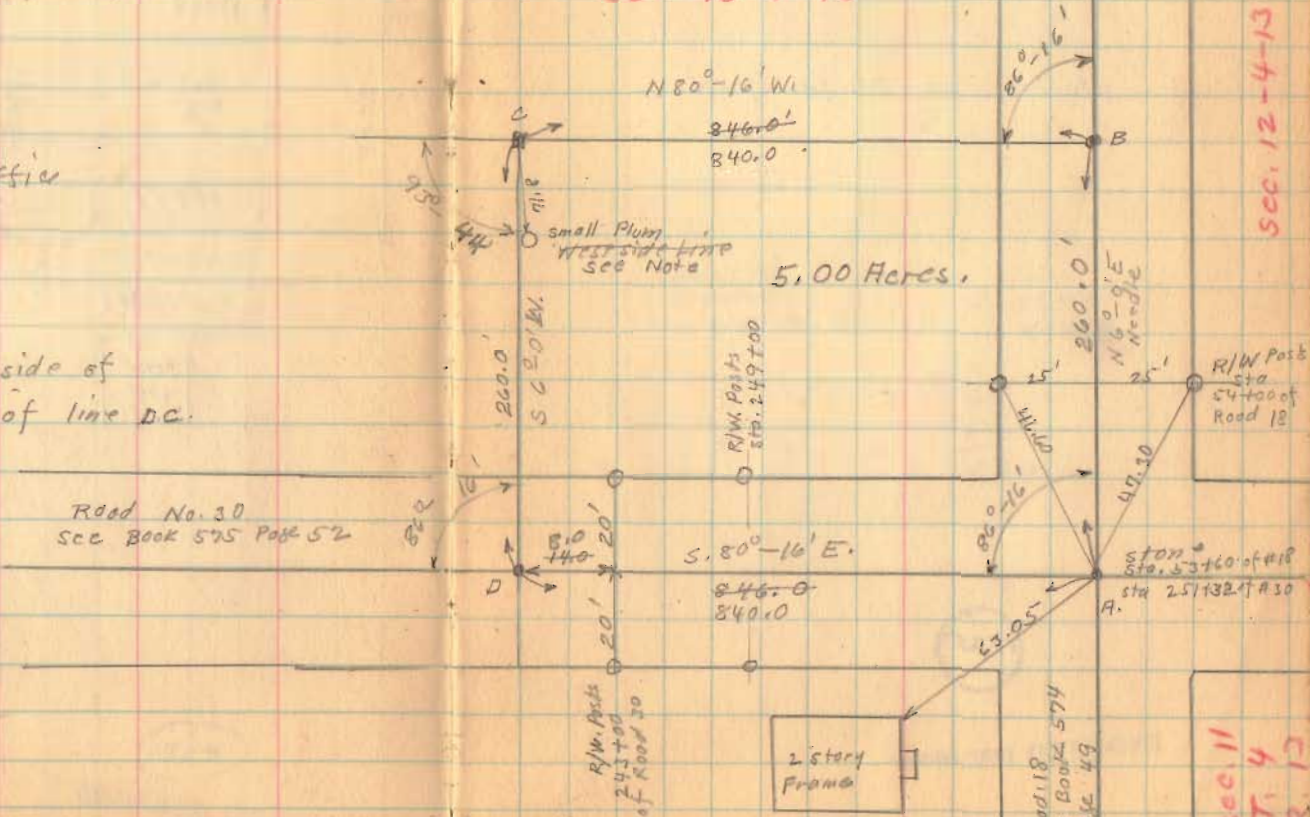
D Moved 6' East

This makes west side of

Plum tree 6' west of line DC.



Sec - 18 - 4 - 13



Sec. 12 - 4 - 13

1730

INDEXED ON MAP

Sec. 17 - 4 - 13

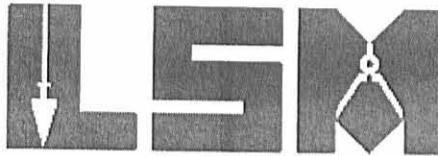
Sec. 11
T. 4
R. 13

DEED 4-10-07 SML/OK

Lee Surveying and Mapping Co., Inc.

Land Surveys • Topography • Subdivisions • Construction Layout

117 N. Madriver St.
Bellefontaine OH 43311



Phone: (937) 593-7335
Fax: (937) 593-7444

KING, ETAL, TRUSTEES 0.003 ACRE

Lying in Section 18, Town 4, Range 13, Union Township, Logan County, Ohio.

Being out of the Darrin Lee King, Nicholas W. King, and Ronald E. King as Co-Trustees of The King Family Irrevocable Trust, dated as of the 26th day of October, 2006, 3.802 acre tract as deeded and described in Official Record 860, Page 946 of the Logan County Records of Deeds and being more particularly described as follows:

Commencing on a stone found in a monument box on the southeast corner of Section 18 on the intersection of center-lines of County Highway 30 and County Highway 18.

THENCE, with the south line of Section 18 and the center-line of County Highway 30 (variable widths), N 80°-17'-00"W, a distance of 982.90 feet to a railroad spike found at the TRUE POINT OF BEGINNING.

THENCE, with the south line of Section 18 and the center-line of County Highway 30 (40 feet wide), N 80°-17'-00"W, a distance of 8.41 feet to a railroad spike set.

THENCE, N 9°-43'-00"W, a distance of 33.04 feet to a 5/8 inch iron rod set, passing a 5/8 inch iron rod set at 20.00 feet.

THENCE, with a westerly line of the Mary Lou King, Trustee of the Mary Lou King Trust, dated October 6, 1999, 56.448 acre tract (O.R. 428, Pg. 619, Tract II), S 4°-33'-53"E, a distance of 34.10 feet to the point of beginning, passing a 5/8 inch iron rod set at 13.44 feet.

Containing 0.003 acre (138.96 square feet), of which 0.003 acre (117.39 square feet) is within the highway right-of-way.

The basis for bearings is the south line of Section 18, being N 80°-17'-00"W, and all other bearings are from angles and distances measured in a field survey by Lee Surveying and Mapping Co., Inc. on April 6, 2007.

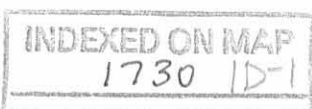


ORIGINAL STAMP IN GREEN

Description prepared by:

William K. Bruce
Professional Surveyor 7437
April 9, 2007

4385037



BEID 4-10-07 SMY OK

Lee Surveying and Mapping Co., Inc.

Land Surveys • Topography • Subdivisions • Construction Layout

117 N. Madriver St.
Bellefontaine OH 43311



Phone: (937) 593-7335
Fax: (937) 593-7444

MARY LOU KING, TRUSTEE 2.997 ACRES

Lying in Section 18, Town 4, Range 13, Union Township, Logan County, Ohio.

Being out of the Mary Lou King, Trustee of the Mary Lou King Trust, dated October 6, 1999, 56.448 acre tract as deeded and described in Official Record 428, Page 619, Tract II of the Logan County Records of Deeds and being more particularly described as follows:

Commencing on a stone found in a monument box on the southeast corner of Section 18 on the intersection of center-lines of County Highway 30 and County Highway 18.

THENCE, with the south line of Section 18 and the center-line of County Highway 30 (variable widths), N 80°-17'-00"W, a distance of 840.00 feet to a railroad spike set at the TRUE POINT OF BEGINNING.

THENCE, with the south line of Section 18 and the center-line of County Highway 30 (40 feet wide), N 80°-17'-00"W, a distance of 142.90 feet to a railroad spike found.

THENCE, with the lines of the Darrin Lee King, Nicholas W. King, and Ronald E. King as Co-Trustees of The King Family Irrevocable Trust, dated as of the 26th day of October, 2006, 3.802 acre tract (O. R. 860, Pg. 946), the following four courses:

N 4°-33'-53"W, a distance of 34.10 feet to a 5/8 inch iron rod set, passing a 5/8 inch iron rod set at 20.66 feet.

N 4°-33'-53"W, a distance of 420.36 feet to a 5/8 inch iron rod found.

N 62°-27'-02"W, a distance of 160.12 feet to a 5/8 inch iron rod found.

S 88°-45'-40"W, a distance of 175.34 feet to a 5/8 inch iron rod found.

THENCE, N 0°-20'-21"E, a distance of 60.42 feet to a 5/8 inch iron rod set.

THENCE, S 86°-35'-44"E, a distance of 555.15 feet to a 5/8 inch iron rod set.

THENCE, with the west line extended and the west line of the Christopher T. Hackley 2.828 acre tract (O.R. 841, Pg. 639, Parcel I), S 5°-59'-00"W, a distance of 578.00 feet to the point of beginning, passing a 5/8 inch iron rod set at 557.96 feet.

Containing 2.997 acres, of which 0.066 acre is within the highway right-of-way.

The basis for bearings is the south line of Section 18, being N 80°-17'-00"W, and all other bearings are from angles and distances measured in a field survey by Lee Surveying and Mapping Co., Inc. on April 6, 2007.

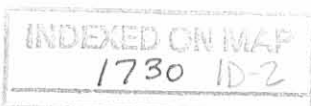


ORIGINAL STAMP IN GREEN

Description prepared by:

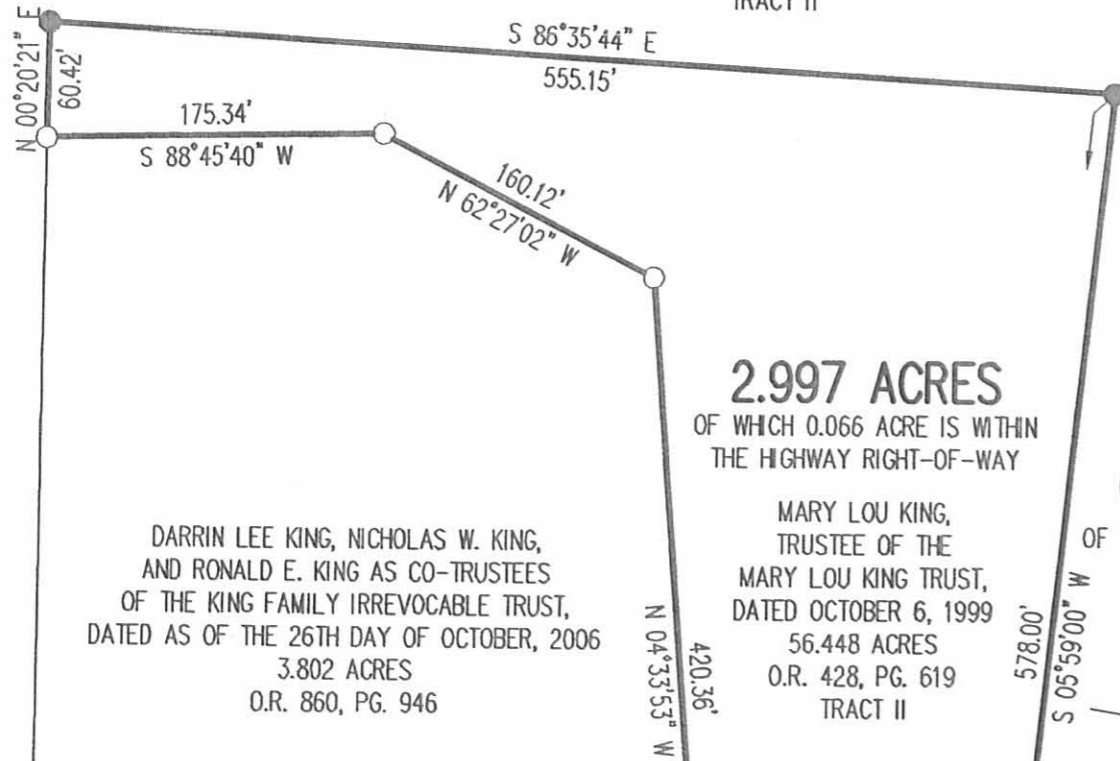
William K. Bruce
Professional Surveyor 7437
April 9, 2007

4385037



REC'D 4-10-07 smyak

MARY LOU KING,
TRUSTEE OF THE
MARY LOU KING TRUST,
DATED OCTOBER 6, 1999
56.448 ACRES
O.R. 428, PG. 619
TRACT II



DARRIN LEE KING, NICHOLAS W. KING,
AND RONALD E. KING AS CO-TRUSTEES
OF THE KING FAMILY IRREVOCABLE TRUST,
DATED AS OF THE 26TH DAY OF OCTOBER, 2006
3.802 ACRES
O.R. 860, PG. 946

2.997 ACRES
OF WHICH 0.066 ACRE IS WITHIN
THE HIGHWAY RIGHT-OF-WAY

MARY LOU KING,
TRUSTEE OF THE
MARY LOU KING TRUST,
DATED OCTOBER 6, 1999
56.448 ACRES
O.R. 428, PG. 619
TRACT II

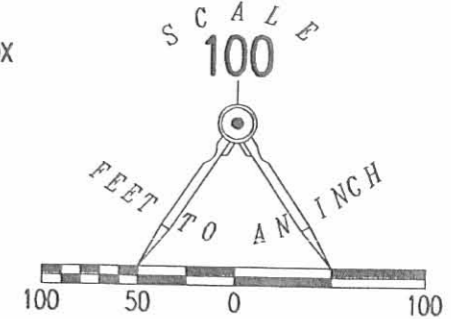
0.003 ACRE
(138.96 SQ. FT.)
OF WHICH 0.003 ACRE (117.39 SQ. FT.)
IS WITHIN THE
HIGHWAY RIGHT-OF-WAY

MARY LOU KING,
TRUSTEE OF THE
MARY LOU KING TRUST,
DATED OCTOBER 6, 1999
56.448 ACRES
O.R. 428, PG. 619
TRACT II

CHRISTOPHER T. HACKLEY
2.828 ACRES
O.R. 841, PG. 639
PARCEL I

LEGEND:

- ☒ STONE FOUND IN MONUMENT BOX
- ⊗ RAILROAD SPIKE FOUND
- ⊕ RAILROAD SPIKE SET
- 5/8 INCH IRON ROD FOUND
- 5/8 INCH IRON ROD SET

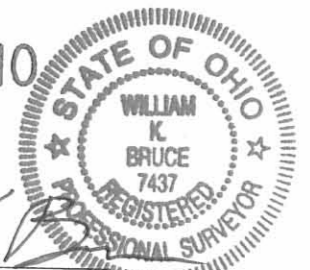


**SURVEY OF 0.003 ACRE OUT OF THE
DARRIN LEE KING, NICHOLAS W. KING,
AND RONALD E. KING AS CO-TRUSTEES
OF THE KING FAMILY IRREVOCABLE TRUST,
DATED AS OF THE 26TH DAY OF OCTOBER, 2006
3.802 ACRE TRACT**

**OFFICIAL RECORD 860, PAGE 946
AND SURVEY OF 2.997 ACRES OUT OF THE
MARY LOU KING, TRUSTEE OF THE
MARY LOU KING TRUST, DATED OCTOBER 6, 1999
56.448 ACRE TRACT
OFFICIAL RECORD 428, PAGE 619, TRACT II
SECTION 18, TOWN 4, RANGE 13**

**UNION TOWNSHIP
LOGAN COUNTY, OHIO**

SURVEYED BY:



WILLIAM K. BRUCE
PROFESSIONAL SURVEYOR 7437
APRIL 6, 2007

COPYRIGHT 2007 BY:
LEE SURVEYING & MAPPING CO., INC.
117 North Madriver Street
BELLEFONTAINE, OHIO 43311
(937) 593-7335
surveys@lsminc.us

KSR D0407 4385037 L-4385-3

2 WORKING DAYS
BEFORE YOU DIG
CALL TOLL FREE **800-362-2764**
OHIO UTILITIES PROTECTION SERVICE.

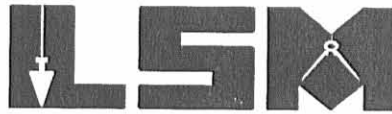
INDEXED ON MAP
1730 1P

Received 10-18-02 OF 07/04

Lee Surveying and Mapping Co., Inc.

Land Surveys • Topography • Subdivisions • Construction Layout

117 N. Madriver St.
Bellefontaine OH 43311



Phone: (937) 593-7335
Fax: (937) 593-7444

LONG 1.122 ACRE

Lying in Section 18, Town 4, Range 13, Union Township, Logan County, Ohio.

Being out of the James R. Long and Annette Long 3.95 acre tract as deeded and described in Official Record 479, Page 402 of the Logan County Records of Deeds and being more particularly described as follows:

Beginning at a stone found in a monument box on the southeast corner of Section 18 at the intersection of the center-lines of County Highway 18 and Township Road 30.

THENCE, with the south line of Section 18 and the center-line of Township Road 30, N 80°-17'-00" W, a distance of 378.47 feet to a MAG nail set at the TRUE POINT OF BEGINNING.

THENCE, with the south line of Section 18 and the center-line of Township Road 30, N 80°-17'-00" W, a distance of 343.44 feet to a MAG nail set.

THENCE, N 9°-43'-00" E, a distance of 76.66 feet to a 5/8 inch iron rod set, passing a 5/8 inch iron rod set at 20.00 feet.

THENCE, N 61°-19'-13" E, a distance of 123.05 feet to a 5/8 inch iron rod set.

THENCE, S 80°-17'-00" E, a distance of 247.00 feet to a 5/8 inch iron rod set.

THENCE, S 9°-43'-00" W, a distance of 153.09 feet to the point of beginning, passing a 5/8 inch iron rod set at 123.05 feet.

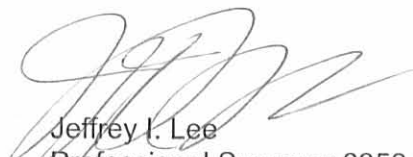
Containing 1.122 acre, of which 0.204 acre is within the highway right-of-way.

The basis for bearings is the south line of Section 18, being N 80°-17'-00" W, and all other bearings are from angles and distances measured in a field survey by Lee Surveying and Mapping Co., Inc. on September 24, 2002.



ORIGINAL STAMP IN GREEN

Description prepared by:


Jeffrey I. Lee
Professional Surveyor 6359
October 12, 2002

L-3443

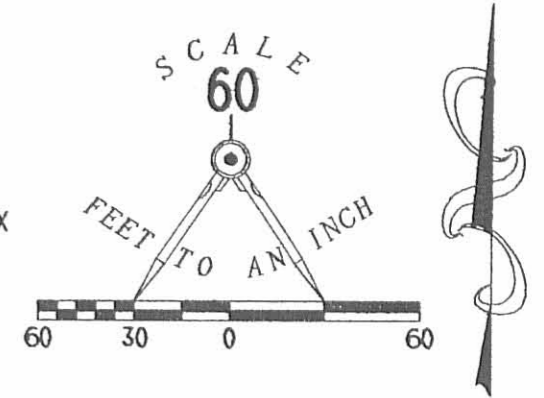


MARY LOU KING, TRUSTEE
 ORIGINAL 67 ACRE AND 50 POLES
 O.R. 428, PG. 619
 TRACT 1

JAMES R. LONG AND
 ANNETTE LONG
 3.95 ACRE TRACT
 O.R. 479, PG. 402

LEGEND

- 5/8 INCH IRON ROD SET
- ⊙ MAG NAIL SET
- ☒ STONE FOUND IN MONUMENT BOX



1.122 ACRES
 OF WHICH 0.204 ACRE IS WITHIN
 THE HIGHWAY RIGHT-OF-WAY

GERALDINE L. STRAKER
 1.05 ACRES
 O.R. 505, PG. 176

COUNTY HIGHWAY 18

TOWNSHIP ROAD 30

SURVEY OF 1.122 ACRES OUT OF THE
 JAMES R. LONG AND ANNETTE LONG
 3.95 ACRE TRACT
 OFFICIAL RECORD 479, PAGE 402
 SECTION 18, TOWN 4, RANGE 13
 UNION TOWNSHIP
 LOGAN COUNTY, OHIO



ORIGINAL STAMP IN GREEN

SURVEYED BY:

Jeffrey I. Lee
 JEFFREY I. LEE
 PROFESSIONAL SURVEYOR 6359
 SEPTEMBER 24, 2002

COPYRIGHT 2002 BY:
 LEE SURVEYING & MAPPING CO., INC.
 117 North Madriver Street
 BELLEFONTAINE, OHIO 43311
 (937) 593-7335

D 407 BLONG

L-3443-3

2 WORKING DAYS
BEFORE YOU DIG
 CALL TOLL FREE **800-362-2764**
 OHIO UTILITIES PROTECTION SERVICE.

INDEXED ON MAP
 1730 2P

HERBERT L. KING SURVEY

The following described real estate situated in the Township of Union, County of Logan, State of Ohio and being located in the southeast quarter of Section No. 18, Town 4, Range 13, Between the Miami Rivers Survey and being out of a present 79.816 Acre tract in the name of Herbert L. King et ux as recorded in Official Record No. 32 Page 112 (11-18-1986) and being more particularly described as follows:

Beginning for reference at a 5/8" Rebar found at the intersection of the centerlines of C. H. No. 18 and T. R. No. 30 and also being the corner to Sections No. 11,12,17 and 18 as recorded in Logan County Engineers Field Book No. 575 Page 52;

Thence with the centerline of T. R. No. 30, N. 80°17'00" W. 984.15 feet to a R. R. Spike set for the true place of Beginning, (Note: The centerline of T. R. No. 30 is the Basis of Bearing for this survey - N. 80°17'00" W.);

Thence continuing with the centerline of T. R. No. 30, N. 80°17'00" W. 250.85 feet to a 1" Rebar found at Station No. 238+97.00 of the centerline survey of T. R. No. 30;

Thence continuing with the centerline of T. R. No. 30, N. 69°59'00" W. 116.00 feet to a R. R. Spike set;

Thence N. 0°21'00" E. 441.95 feet to a 5/8" x 30" Rebar set, passing through a 5/8" x 30" Rebar set at 21.24 feet;

Thence N. 88°46'00" E. 175.60 feet to a 5/8" x 30" Rebar set;

Thence S. 69°29'00" E. 160.20 feet to a 5/8" x 30" Rebar set;

Thence S. 8°07'15" E. 463.47 feet to the true place of beginning, passing through a 5/8" x 30" Rebar set at 442.44 feet, containing a total of 165,619.175 square feet or 3.802 Acres, more or less.

Of the above described tract, there is 7,340.00 square feet or 0.169 Acres in the right of way of T. R. No. 30.

I hereby certify that this description is the result of a field survey made by me on December 2, 1993.



Daniel E. Gilbert

DANIEL E. GILBERT, P.S.
REG. SUR. NO. 5402
400 N. PARK ST.
BELLEFONTAINE, OHIO 43311
TELEPHONE: 1 (513) 593-1428

INDEXED ON MAP

173030

Herbert L. King et ux
 O. R. No. 32 P. 112 (11-18-1986)
 50-120-00-00-065.001

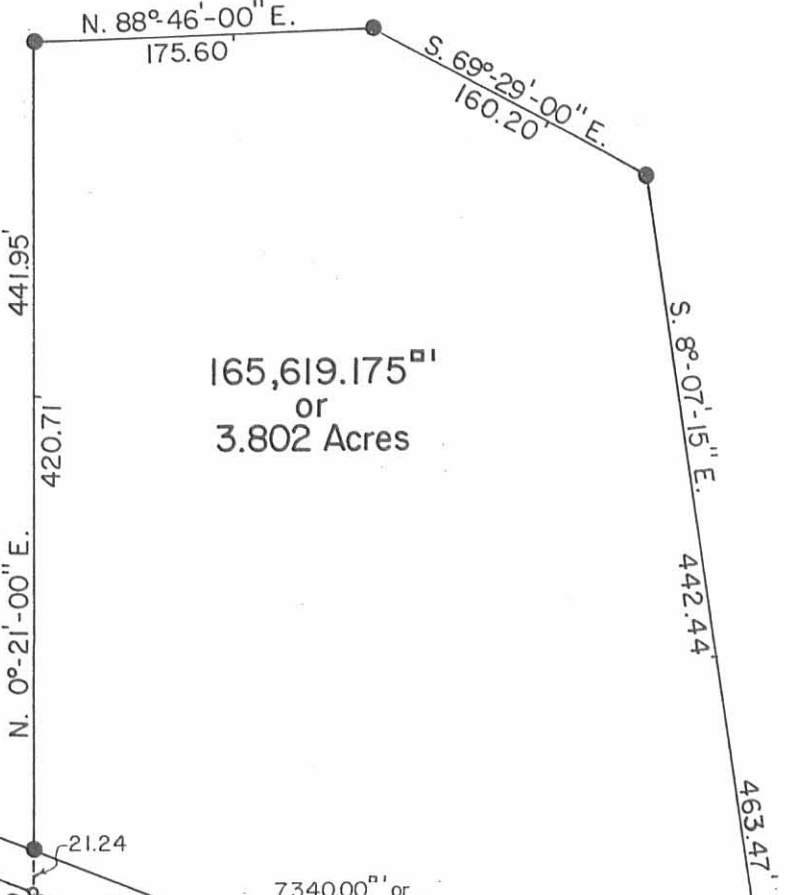
66.300 Acres

Herbert L. King et ux
 O. R. No. 32 P. 112 (11-18-1986)
 50-120-00-00-064.000

79.816 Acres
 - 3.802 Acres
 76.014 Acres

165,619.175^{sq}
 or
 3.802 Acres

66.300 Acres
 79.816 Acres



1" Rebar Fd.
 Sta. 236+71.00

1" Rebar Fd.
 Sta. 238+97.00
 Δ=10°-18' Lt.

7,340.00^{sq} or
 0.169 Acres

N. 80°-17'-00" W.
 T.R. No. 30
 F.B. 575 P. 51-52.

N. 80°-17'-00" W.
 Basis of Bearing

C.H. No. 18
 -50'

SECTION CORNER
 5/8" Rebar Fd.
 Sta. 251+32.00(T.R. No. 30)=
 Sta. 53+60.00(C.H. No. 18).

N



Scale: 1" = 100'

SYMBOLS:
 ○ - R. R. Spikes Set.
 ● - 5/8 x 30 Rebars Set.



HERBERT L. KING SURVEY
 Section No. 18 T.4 R.13 B.M.R.S.
 Union Township, Logan County, Ohio.

SCALE: 1" = 100'
 DATE: 12-2-1993

APPROVED BY:
 DRAWN BY: DEG
 REVISED:

Daniel E. Gilbert
 Daniel E. Gilbert, P.S.
 Reg. Sur. No. 5402

DRAWING NUMBER
 093-053

INDEXED ON MAP
 1730 3P

W. A. MONTGOMERY

SURVEYOR LOGAN COUNTY
BELLEFONTAINE, OHIO

1936

Yoder Survey Union Township 5.00 Acres

The following described land being in Union Township Logan County Ohio and being in the S.E. Quarter of section 18 Town 4 Range 13 Of between the Miami Rivers Survey.

Beginning at a stone at the S.E. corner of section 18 T. 4 R. 13 at the intersection of two roads thence with the east side of said section 18 and the center of road No. 18 (known as the Carlisle pike) N. 6 - 0 E. 260.00 feet to an iron thence N. 80 - 16 W. 840.00 feet to a stake thence S. 6 - 0 W. 260.00 feet to an iron ^m the south line of said section and in the center of road no. 30 thence with the south line of said section and with the center of road no 30 S. - 80 - 16 E. 840.00 feet to the place of beginning said tract containing 5.00 acres more or less and being the same trace as surveyed July 25 1936 as shown and recorded in Logan County Engineers book No. 597 page 55

1730 40

INDEXED ON MAP

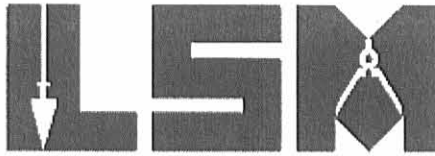
14

REC'D 7-28-09 GMY OK

Lee Surveying and Mapping Co., Inc.

Land Surveys • Topography • Subdivisions • Construction Layout

117 N. Madriver St.
Bellefontaine OH 43311



Phone: (937) 593-7335
Fax: (937) 593-7444
surveys@lsminc.us

KING 66.829 ACRES

Lying in Section 18, Town 4, Range 13, Union Township, Logan County, Ohio.

Being out of the David L. King and Patricia L. King 63.493 acre tract and 19.816 acre tract and all of the 53.451 acre tract as deeded and described in Official Record 958, Page 609, Tract I, Tract III and Tract II of the Logan County Records of Deeds and being more particularly described as follows:

Commencing on a stone found in a monument box on the southeast corner of Section 18 and on the intersection of the center-lines of County Highway 18 and Township Road 30 at Station 251+32 (Logan County Engineer's Field Book 575, Page 52).

THENCE, with the east line of Section 18 and the center-line of County Highway 18 (50 feet wide), N 06°-00'-59"E, a distance of 260.00 feet to a point at the TRUE POINT OF BEGINNING, referenced by a 1-1/2 inch iron rod found bearing S 80°-17'-02"E, a distance of 0.15 feet.

THENCE, with the north lines of the Geraldine L. Straker 1.05 acre tract (O.R. 505, Pg. 176) and the Christopher T. Hackley 2.828 acre tract (O.R. 841, Pg. 639, Parcel I), N 80°-17'-02"W, a distance of 840.15 feet to a 5/8 inch iron rod set, passing a 5/8 inch iron rod set at 25.05 feet.

THENCE, with the lines of the Tyler J. King 2.997 acre tract (O.R. 880, Pg. 114) the following two courses:

N 05°-59'-00"E, a distance of 318.00 feet to a 5/8 inch iron rod found.

N 86°-35'-44"W, a distance of 555.15 feet to a 5/8 inch iron rod found.

THENCE, with the west lines of the said 2.997 acre tract and the Darrin Lee King, et al, Co-Trustees, 3.802 acre tract (O.R. 860, Pg. 946), S 00°-20'-21"W, a distance of 501.63 feet to a railroad spike found on the center-line of Township Road 30, passing a 5/8 inch iron rod found at 480.39 feet.

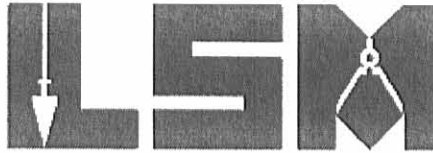
THENCE, with the center-line of Township Road 30 (40 feet wide), S 69°-56'-45"E, a distance of 115.97 feet to a 1-1/4 inch iron rod found at Station 238+97 (Logan County Engineer's Field Book 575, Page 51) on the south line of Section 18.

THENCE, with the south line of Section 18 and the north line of the Jeanie E. Adams 42 acre tract (Vol. 384, Pg. 894), N 80°-17'-00"W, a distance of 219.34 feet to a 5/8 inch iron rod set, passing a 5/8 inch iron rod set at 111.46 feet.

Lee Surveying and Mapping Co., Inc.

Land Surveys • Topography • Subdivisions • Construction Layout

117 N. Madriver St.
Bellefontaine OH 43311



Phone: (937) 593-7335
Fax: (937) 593-7444
surveys@lsminc.us

THENCE, with the east line of the Jeanie E. Adams 0.81 acre tract (Vol. 384, Pg. 894), N 06°-36'-08"E, a distance of 40.47 feet to a 1 inch iron rod found in a monument box on the center-line of Township Road 30 at Station 236+71 (Logan County Engineer's Field Book 575, Page 51), passing a 5/8 inch iron rod set at 19.90 feet.

THENCE, with the center-line of Township Road 30, N 79°-47'-14"W, a distance of 25.04 feet to a MAG nail set.

THENCE, N 06°-18'-10"E, a distance of 2545.58 feet to a 5/8 inch iron rod set on the north line of the southeast quarter of Section 18, passing a 5/8 inch iron rod set at 20.05 feet.

THENCE, with the north line of the southeast quarter of Section 18 and the south lines of the David B. Bell 66.66 acre tract (O.R. 107, Pg. 37, Tract III) and the Roger D. Stump 7.956 acre tract (O.R. 205, Pg. 88, Tract II), S 83°-44'-13"E, a distance of 780.60 feet to a point, referenced by a 5/8 inch iron rod found bearing N 05°-55'-00"E, a distance of 0.38 feet.

THENCE, with the lines of the Roger D. Stump 10.184 acre tract (O.R. 205, Pg. 88, Tract I), the following two courses:

S 05°-55'-00"W, a distance of 661.86 feet to a 5/8 inch iron rod found.

S 85°-25'-20"E, a distance of 680.21 feet to a railroad spike found on the east line of Section 18 and the center-line of County Highway 18, passing a 5/8 inch iron rod found at 655.20 feet.

THENCE, with the east line of Section 18 and the center-line of County Highway 18, S 06°-00'-59"W, a distance of 1773.47 feet to the point of beginning.

Containing 66.829 acres, of which 1.155 acres are within the highway rights-of-way.

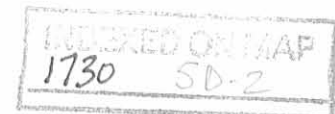
The basis for bearings is the center-line of Township Road 30 between Station 251+32 and Station 238+97, being N 80°-17'-00"W, and all other bearings are from angles and distances measured in a field survey by Lee Surveying and Mapping Co., Inc. on July 15, 2009.



ORIGINAL STAMP IN GREEN

Description prepared by:

William K. Bruce
Professional Surveyor 7437
July 20, 2009



3332069

REC'D 7-28-09 SMY OK

Lee Surveying and Mapping Co., Inc.

Land Surveys • Topography • Subdivisions • Construction Layout

117 N. Madriver St.
Bellefontaine OH 43311



Phone: (937) 593-7335
Fax: (937) 593-7444
surveys@lsminc.us

KING 64.822 ACRES

Lying in Section 18, Town 4, Range 13, Union Township, Logan County, Ohio.

Being out of the David L. King and Patricia L. King 63.493 acre tract and 19.816 acre tract as deeded and described in Official Record 958, Page 609, Tract I and Tract III of the Logan County Records of Deeds and being more particularly described as follows:

Commencing on a 1 inch diameter drill bit found in a monument box on the south line of Section 18 at the southwest corner of the southeast quarter and on the center-line of Township Road 30 at Station 223+81 (Logan County Engineer's Field Book 575, Page 51).

THENCE, with the center-line of Township Road 30 (40 feet wide), S 83°-05'-01"E, a distance of 340.00 feet to a railroad spike found at the TRUE POINT OF BEGINNING.

THENCE, with the lines of the David L. King and Marian M. King 2.007 acre tract (O.R. 568, Pg. 440) the following two courses:

N 06°-36'-12"E, a distance of 258.00 feet to a 5/8 inch iron rod found, passing a 5/8 inch iron rod found at 20.00 feet.

N 83°-22'-00"W, a distance of 340.00 feet to a 5/8 inch iron rod found on the west line of the southeast quarter of Section 18.

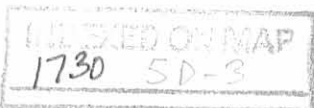
THENCE, with the west line of the southeast quarter of Section 18 and the east lines of the J. Wesley Yoder 65.56 acre tract (Vol. 396, Pg. 236) and the David B. Bell 76.11 acre tract (O.R. 107, Pg. 37, Tract I), N 06°-36'-08"E, a distance of 1794.97 feet to a 5/8 inch iron rod set.

THENCE, S 86°-35'-16"E, a distance of 607.23 feet to a 5/8 inch iron rod set.

THENCE, N 09°-11'-08"W, a distance of 122.30 feet to a 5/8 inch iron rod set.

THENCE, N 41°-27'-28"W, a distance of 108.10 feet to a 5/8 inch iron rod set.

THENCE, N 34°-28'-39"W, a distance of 118.27 feet to a 5/8 inch iron rod set.

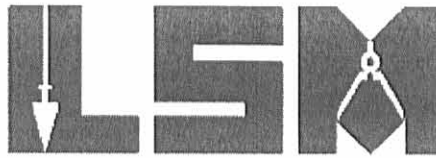


REC'D 7-28-09 SMY OK

Lee Surveying and Mapping Co., Inc.

Land Surveys • Topography • Subdivisions • Construction Layout

117 N. Madriver St.
Bellefontaine OH 43311



Phone: (937) 593-7335
Fax: (937) 593-7444
surveys@lsminc.us

THENCE, N 17°-06'-46"W, a distance of 161.20 feet to a 5/8 inch iron rod set on the north line of the southeast quarter of Section 18.

THENCE, with the north line of the southeast quarter of Section 18 and the south line of the David B. Bell 66.66 acre tract (O.R. 107, Pg. 37, Tract III), S 83°-44'-13"E, a distance of 901.03 feet to a 5/8 inch iron rod set.

THENCE, S 06°-18'-10"W, a distance of 2545.58 feet to a MAG nail set on the center-line of Township Road 30, passing a 5/8 inch iron rod set at 2525.53 feet.

THENCE, with the center-line of Township Road 30, the following two courses:
N 79°-47'-14"W, a distance of 374.13 feet to a 1 inch iron rod found in a monument box at Station 232+72 (Logan County Engineer's Field Book 575, Page 51).

N 83°-05'-01"W, a distance of 244.12 feet to a MAG nail set.

THENCE, with the west right-of-way of a 20.00 feet wide ingress/egress right-of-way (O.R. 913, Pg. 713), N 06°-49'-41"E, a distance of 724.24 feet to a ½ inch iron pipe found.

THENCE, with the lines of the Cameron L. Spencer and Stephanie L. Spencer 1.00 acre tract (O.R. 913, Pg. 713), the following four courses:

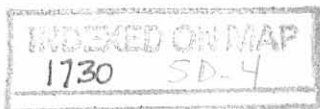
N 06°-49'-41"E, a distance of 268.54 feet to a ½ inch iron pipe found.

S 81°-55'-58"E, a distance of 162.33 feet to a 5/8 inch iron rod set.

S 06°-49'-41"W, a distance of 268.54 feet to a ½ inch iron pipe found.

N 81°-55'-58"W, a distance of 162.33 feet to the said ½ inch iron pipe found.

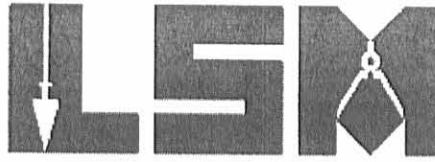
THENCE, S 06°-49'-41"W, a distance of 724.24 feet to the said MAG nail set on Township Road 30.



Lee Surveying and Mapping Co., Inc.

Land Surveys • Topography • Subdivisions • Construction Layout

117 N. Madriver St.
Bellefontaine OH 43311



Phone: (937) 593-7335
Fax: (937) 593-7444
surveys@lsminc.us

THENCE, with the center-line of Township Road 30, N 83°-05'-01"W, a distance of 306.87 feet to the point of beginning.

Containing 64.822 acres, of which 0.425 acre is within the highway right-of-way.

The basis for bearings is the center-line of Township Road 30 between Station 251+32 and Station 238+97, being N 80°-17'-00"W, and all other bearings are from angles and distances measured in a field survey by Lee Surveying and Mapping Co., Inc. on July 15, 2009.



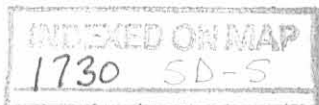
ORIGINAL STAMP IN GREEN

Description prepared by:

A handwritten signature in cursive script that reads 'William K. Bruce'.

William K. Bruce
Professional Surveyor 7437
July 20, 2009

3332069

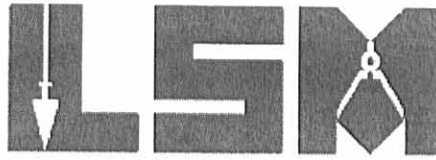


REC'D 7-28-09 SMY OC

Lee Surveying and Mapping Co., Inc.

Land Surveys • Topography • Subdivisions • Construction Layout

117 N. Madriver St.
Bellefontaine OH 43311



Phone: (937) 593-7335
Fax: (937) 593-7444
surveys@lsminc.us

KING 4.928 ACRES

Lying in Section 18, Town 4, Range 13, Union Township, Logan County, Ohio.

Being out of the David L. King and Patricia L. King 63.493 acre tract as deeded and described in Official Record 958, Page 609, Tract I of the Logan County Records of Deeds and being more particularly described as follows:

Commencing on a 1 inch diameter drill bit found in a monument box on the south line of Section 18 at the southwest corner of the southeast quarter and on the center-line of Township Road 30 at Station 223+81 (Logan County Engineer's Field Book 575, Page 51).

THENCE, with the west line of the southeast quarter of Section 18, N 06°-36'-08"E, a distance of 2051.29 feet to a 5/8 inch iron rod set at the TRUE POINT OF BEGINNING, passing a 5/8 inch iron rod found at 256.32 feet.

THENCE, with the west line of the southeast quarter of Section 18 and the east line of the David B. Bell 76.11 acre tract (O.R. 107, Pg. 37, Tract I), N 06°-36'-08"E, a distance of 458.40 feet to a chiseled "X" found in top of a concrete post at the northwest corner of the southeast quarter of Section 18.

THENCE, with the north line of the southeast quarter of Section 18 and the south line of the David B. Bell 66.66 acre tract (O.R. 107, Pg. 37, Tract III), S 83°-44'-13"E, a distance of 350.06 feet to a 5/8 inch iron rod set.

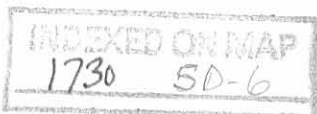
THENCE, S 17°-06'-46"E, a distance of 161.20 feet to a 5/8 inch iron rod set.

THENCE, S 34°-28'-39"E, a distance of 118.27 feet to a 5/8 inch iron rod set.

THENCE, S 41°-27'-28"E, a distance of 108.10 feet to a 5/8 inch iron rod set.

THENCE, S 09°-11'-08"E, a distance of 122.30 feet to a 5/8 inch iron rod set.

THENCE, N 86°-35'-16"W, a distance of 607.23 feet to the point of beginning.



Lee Surveying and Mapping Co., Inc.

Land Surveys • Topography • Subdivisions • Construction Layout

117 N. Madriver St.
Bellefontaine OH 43311



Phone: (937) 593-7335
Fax: (937) 593-7444
surveys@lsminc.us

Containing 4.928 acres.

This parcel is to be attached to an adjoining tract of land and is not to be used as a separate and independent parcel.

The basis for bearings is the center-line of Township Road 30 between Station 251+32 and Station 238+97, being N 80°-17'-00"W, and all other bearings are from angles and distances measured in a field survey by Lee Surveying and Mapping Co., Inc. on July 15, 2009.

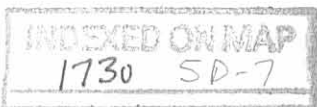


Description prepared by:

A handwritten signature in cursive script that reads 'William K. Bruce'.

William K. Bruce
Professional Surveyor 7437
July 20, 2009

3332069



REC'D 7-28-09 SUM BK

LINE	BEARING	DISTANCE
L1	N 09°11'08" W	122.30'
L2	N 41°27'28" W	108.10'
L3	N 34°28'39" W	118.27'
L4	N 17°06'46" W	161.20'

DAVID B. BELL
75.27 ACRES
O.R. 107, PG. 37
TRACT II

DAVID B. BELL
66.66 ACRES
O.R. 107, PG. 37
TRACT III

DAVID B. BELL
76.11 ACRES
O.R. 107, PG. 37
TRACT I

J. WESLEY YODER
65.56 ACRES
VOL. 396, PG. 236

DAVID L. KING AND
MARIAN M. KING
2.007 ACRES
O.R. 568, PG. 440

CAMERON L. SPENCER AND
STEPHANIE L. SPENCER
1.00 ACRE
O.R. 913, PG. 713

DARRIN LEE KING, ETAL,
CO-TRUSTEES
3.802 ACRES
O.R. 860, PG. 946

TYLER J. KING
2.997 ACRES
O.R. 880, PG. 114

CHRISTOPHER T. HACKLEY
2.828 ACRES
O.R. 841, PG. 639
PARCEL I

SECTION 18, TOWN 4, RANGE 13
PARCEL II
1.122 ACRES
1233.60'

GERALDINE L. STRAMER
1.05 ACRES
O.R. 505, PG. 176

STATION 251+32
(LOGAN COUNTY ENGINEER'S
FIELD BOOK 575, PAGE 52)

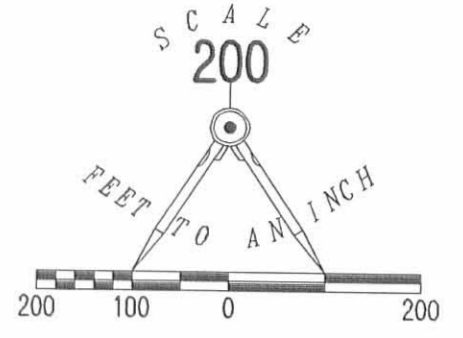
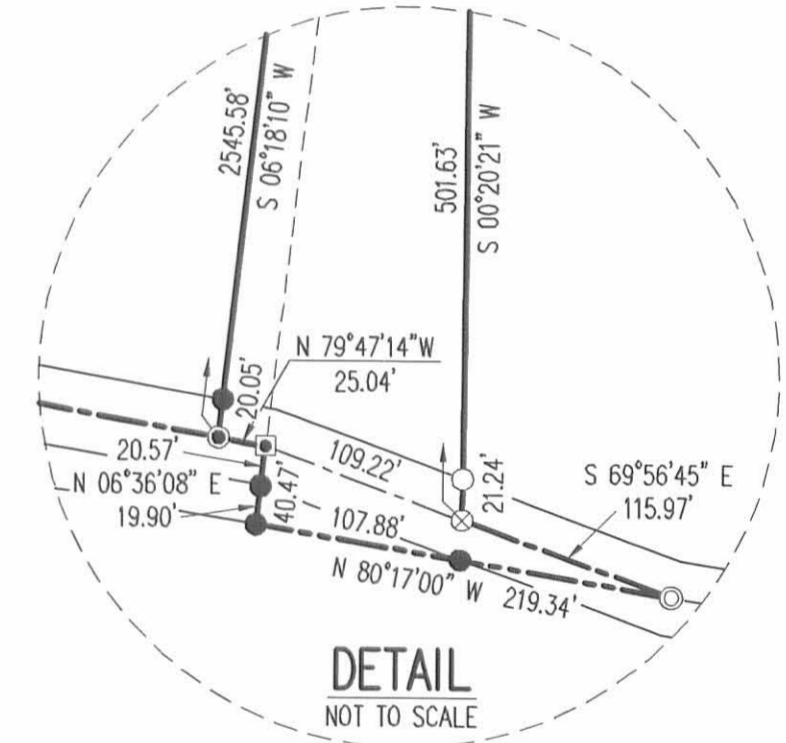
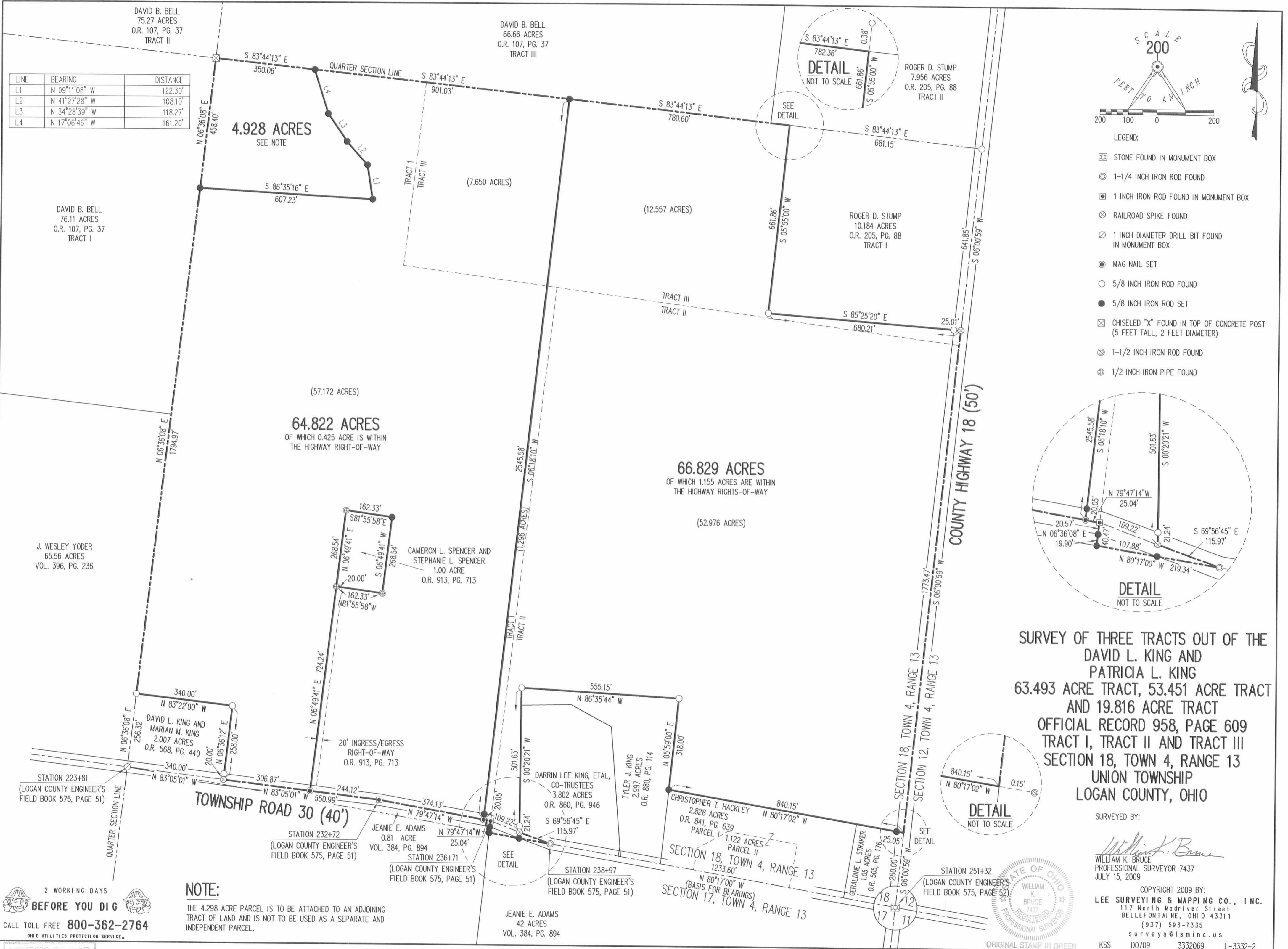
JEANIE E. ADAMS
42 ACRES
VOL. 384, PG. 894

NOTE:

THE 4.298 ACRE PARCEL IS TO BE ATTACHED TO AN ADJOINING TRACT OF LAND AND IS NOT TO BE USED AS A SEPARATE AND INDEPENDENT PARCEL.

2 WORKING DAYS
BEFORE YOU DIG
CALL TOLL FREE **800-362-2764**
OHIO UTILITIES PROTECTION SERVICE.

INDEXED ON MAP
1730 SP

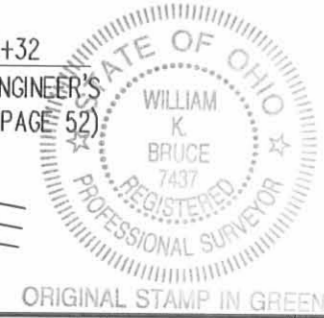


- LEGEND:**
- ☒ STONE FOUND IN MONUMENT BOX
 - ⊙ 1-1/4 INCH IRON ROD FOUND
 - ⊠ 1 INCH IRON ROD FOUND IN MONUMENT BOX
 - ⊗ RAILROAD SPIKE FOUND
 - ⊚ 1 INCH DIAMETER DRILL BIT FOUND IN MONUMENT BOX
 - MAG NAIL SET
 - 5/8 INCH IRON ROD FOUND
 - 5/8 INCH IRON ROD SET
 - ⊠ CHISELED "X" FOUND IN TOP OF CONCRETE POST (5 FEET TALL, 2 FEET DIAMETER)
 - ⊙ 1-1/2 INCH IRON ROD FOUND
 - ⊕ 1/2 INCH IRON PIPE FOUND

**SURVEY OF THREE TRACTS OUT OF THE
DAVID L. KING AND
PATRICIA L. KING
63.493 ACRE TRACT, 53.451 ACRE TRACT
AND 19.816 ACRE TRACT
OFFICIAL RECORD 958, PAGE 609
TRACT I, TRACT II AND TRACT III
SECTION 18, TOWN 4, RANGE 13
UNION TOWNSHIP
LOGAN COUNTY, OHIO**

SURVEYED BY:
William K. Bruce
WILLIAM K. BRUCE
PROFESSIONAL SURVEYOR 7437
JULY 15, 2009

COPYRIGHT 2009 BY:
LEE SURVEYING & MAPPING CO., INC.
117 North Madison Street
BELLEFONTAINE, OHIO 43311
(937) 593-7335
surveys@lsmc.us
KSS D0709 3332069 L-3332-2



ORIGINAL STAMP IN GREEN