

Road 18
Union Twp.

Sta. 0+00 to 112+34 50'
see Report filled with
road 18
Sta. 112+34 to 131+51 60'
see Map filled with road 18.

(see Book 574 Page 47)
(see Book 302 Page 2)
(see Book 345 Note front Fly leaf)

6+20.5

4+20.5

0+50

Measurements set for 50'
Roads

1365
INDEXED ON MAP

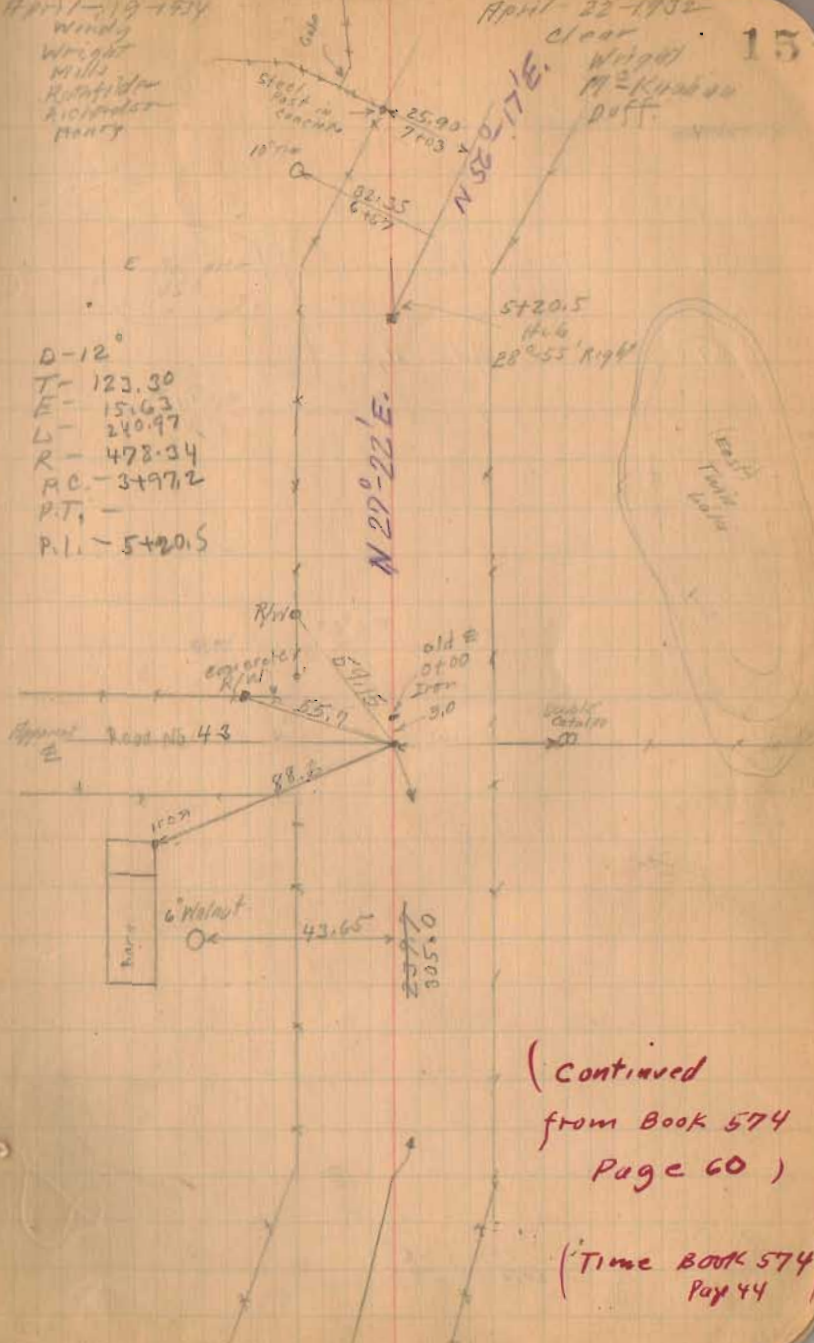
April 19 1934

Windy
Wright
Mills
Kraft
P. H. H. H.
H. H. H.

April 22 1932

Clear
Wright
M. H. H. H.
Duff

15



D-12°
T- 123.30
E- 15.63
L- 240.97
R- 478.34
P.C. - 3+97.2
P.T. -
P.L. - 5+20.5

(Continued
from Book 574
Page 60)

(Time Book 574
Page 44)

Road No. 18

30 + 59.3

28 + 16 } Left Only
Tap Line

27 + 00

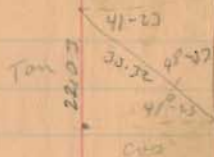
Right Only

20 + 00

18 + 00

12 + 65

90° from back site



Tom 41-23

8511
25
44855
17622
220225

Don 41-23

13322
21
22660
26656
333200



N 55-0'E

16500

Road No 15

47+00

42+41.5

90° from back side.

38+00

36+83

Right Only

35+20

Left Only

1365
INDEXED ON MAP



June 6 - 1932

Wagon

Wright

17

McCabe

4-19-34



38.20

37.75

45+12

N. 41° 50' E.

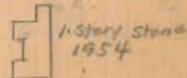
N. 40° E.

Harrison
Hostetter

42+41.5

Geo. T. Clark.

24' Black Oak



Iron

Sta. 32+26.2

No Right

Not Drawn

correctly

straight line

36+83 to 42+41.5

Soc. Plat of
Road 32 in
Drawer with
Road 32

610.0'

Road No. 32

Barn

1/4 Sec. 32

36+20

36+20

36+20

36+20

36+20

36+20

36+20

36+20

36+20

N. 40° E.

37+19.7

1/4 Sec. 32 37+19.7
Line

Iron

Sta. 36+83

4'-37' Left

N. 40° E.

N. 40° E.

N. 40° E.

Road No. 18

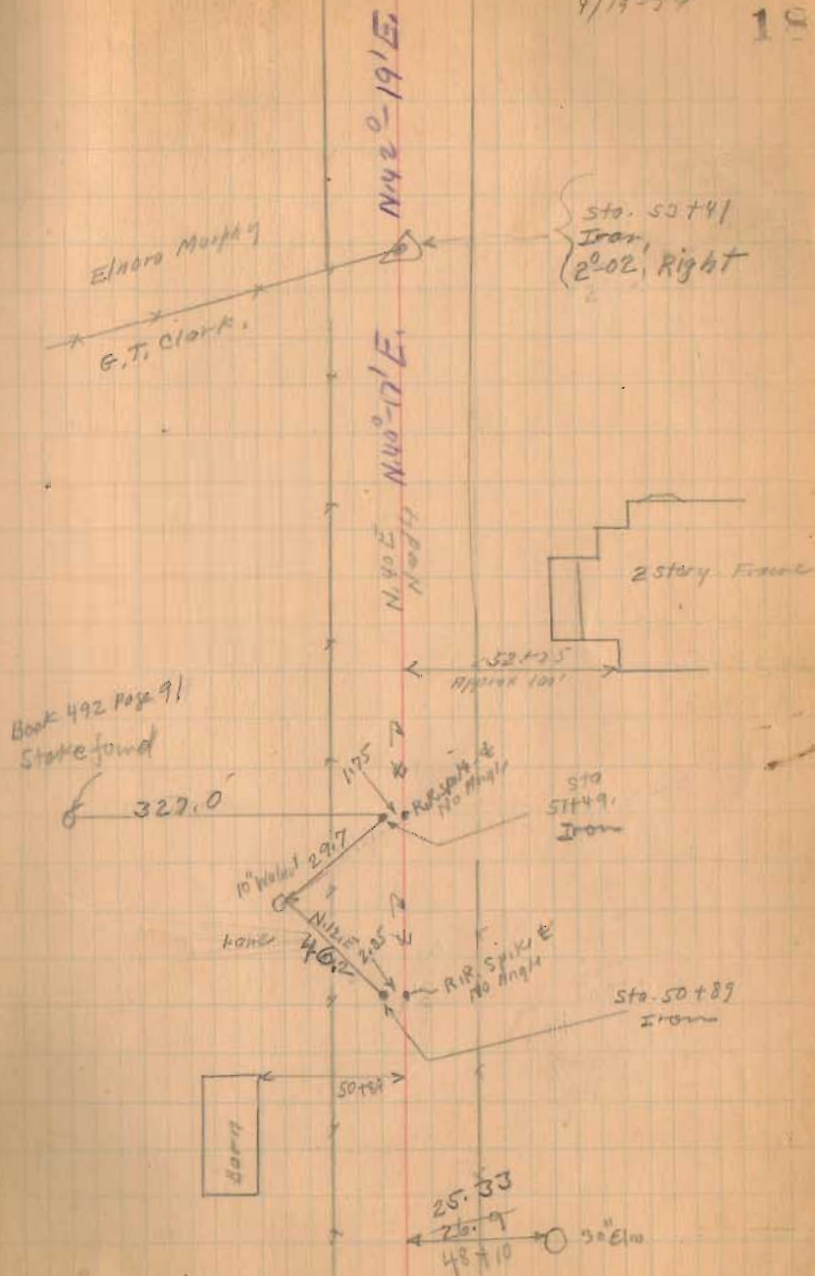
53741 90° from Bookside

1365

INDEXED ON MAP

6-2-32
4/19-34

18



ROAD 18

65757.4

57443
57441
2

62795

57143

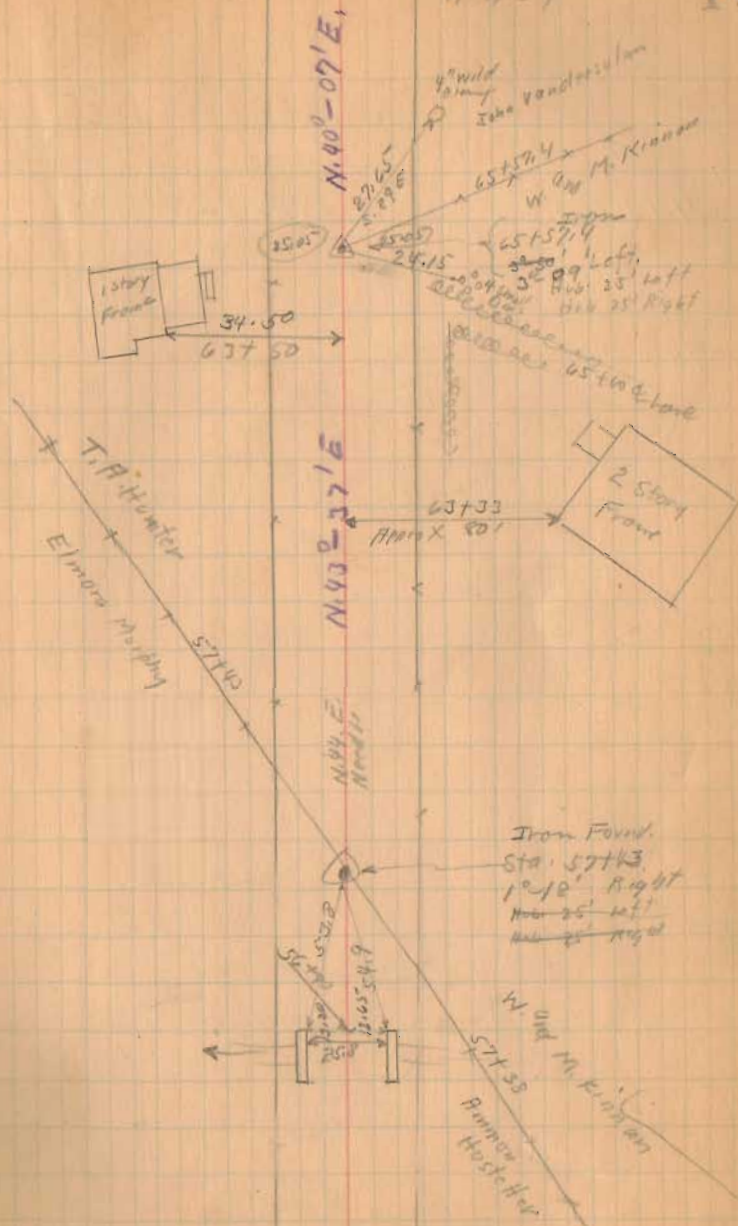
90° from Berkeley

1365

INDEXED ON MAP

19

4/6/32
4/19/34



Road No 18

77+59.0

90° Backsite

79+00

92+50

Right only 90° Backsite

69+45

90° from Backsite

1365

INDEXED ON MAP

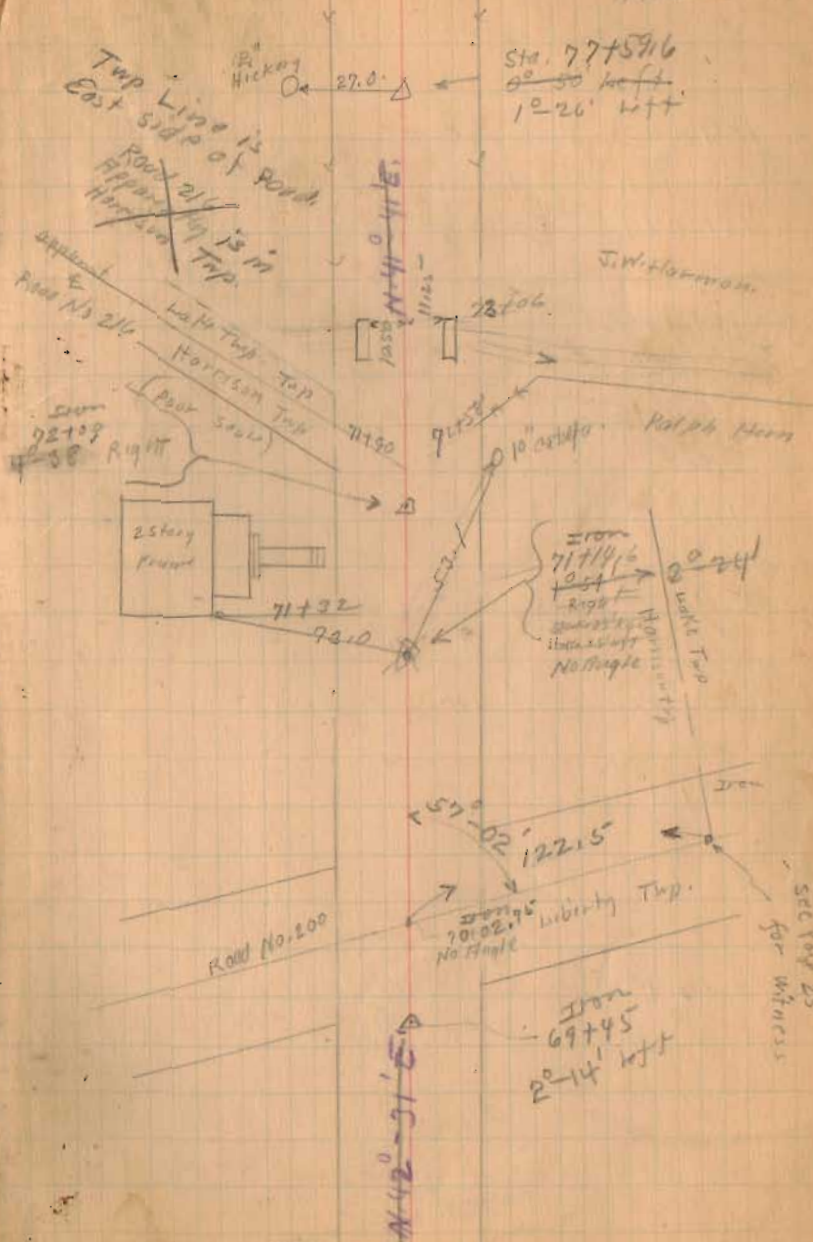
June 7-1932

Windy

Wright

Hickman

20



Road No. 18

107+00

101+79.8

90° from Backside.

96+92

90° Backside

90+94

90° from Backside.

87+00

82+00

1365

INDEXED ON MAP

21

4/27/32

