

Road 45 Union Twp.

See Book 511 Page 17 for  
Road 45 West of # 31

See Book 516 Page 72 To 75  
for Section Corner.

See Book C Page 56

40' Road 201 To 11 Road Record 1 Page 313-326

60' Road 201 To 18 Vol 6 - 47

33' Alterations { Vol 10 - 199  
Vol 10 - 221

see Road Record 2 Page 530 } Plats  
" " " 1 Page 318 }

See Book 560 for X-sections

40' - 0+00 To 66+85 Road Record # 2  
Plat Page 530  
40' Page 532

60' 66+85 To 107+24.2 Comm. Journal 6  
Page 47-48

33' 107+24.2 To 125+26.6 Comm.  
Journal 10  
Page 231



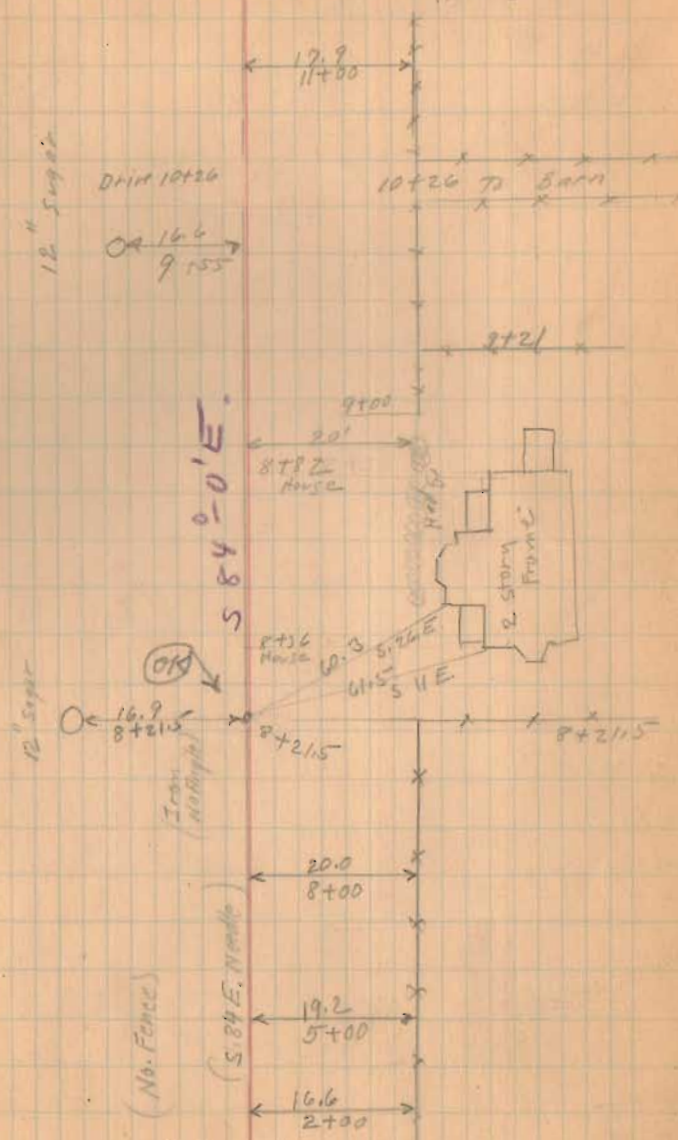


Road. 45  
Union Twp.

(1360)  
INDEXED ON MAP.

March-17-1932  
Cloudy - Cool  
Wright  
McKusick  
Watkins

54

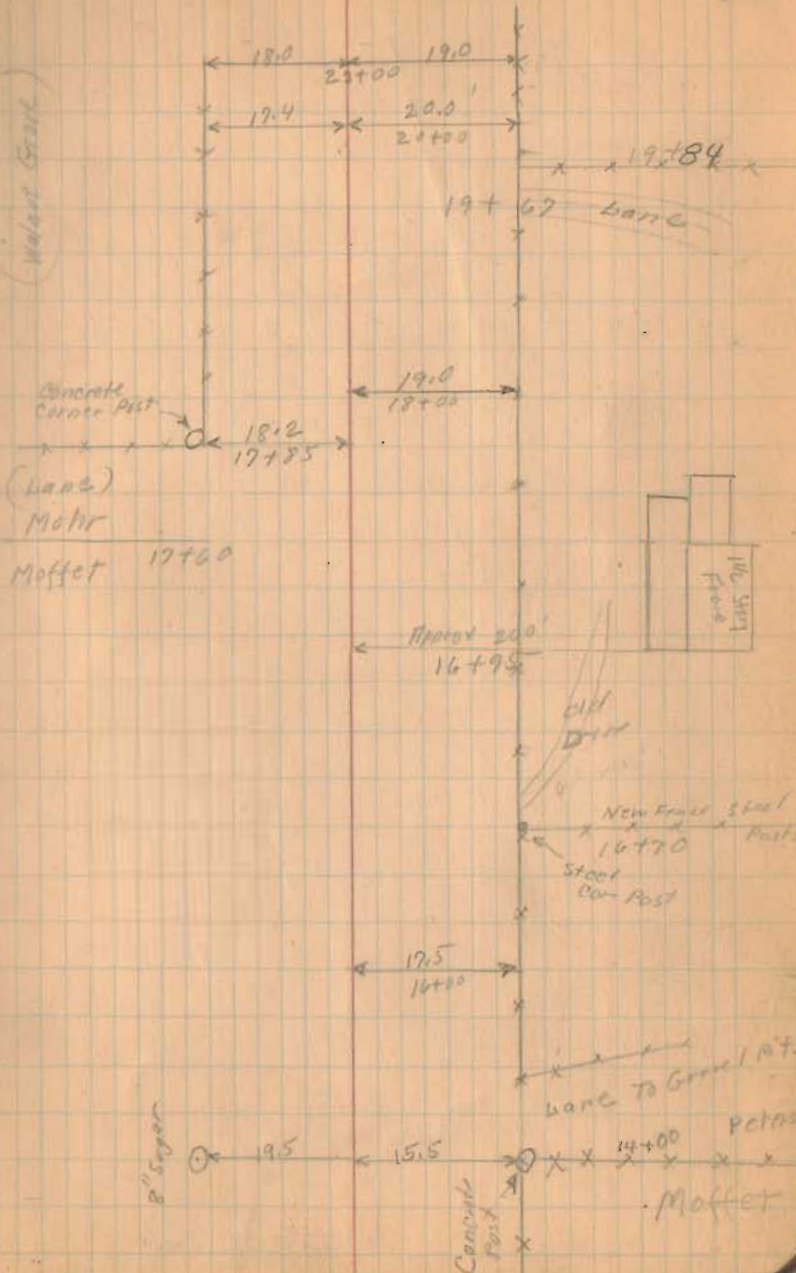


Road No. 45

3-17-32

59

(Walnut Street)



1360  
INDEXED ON MAP

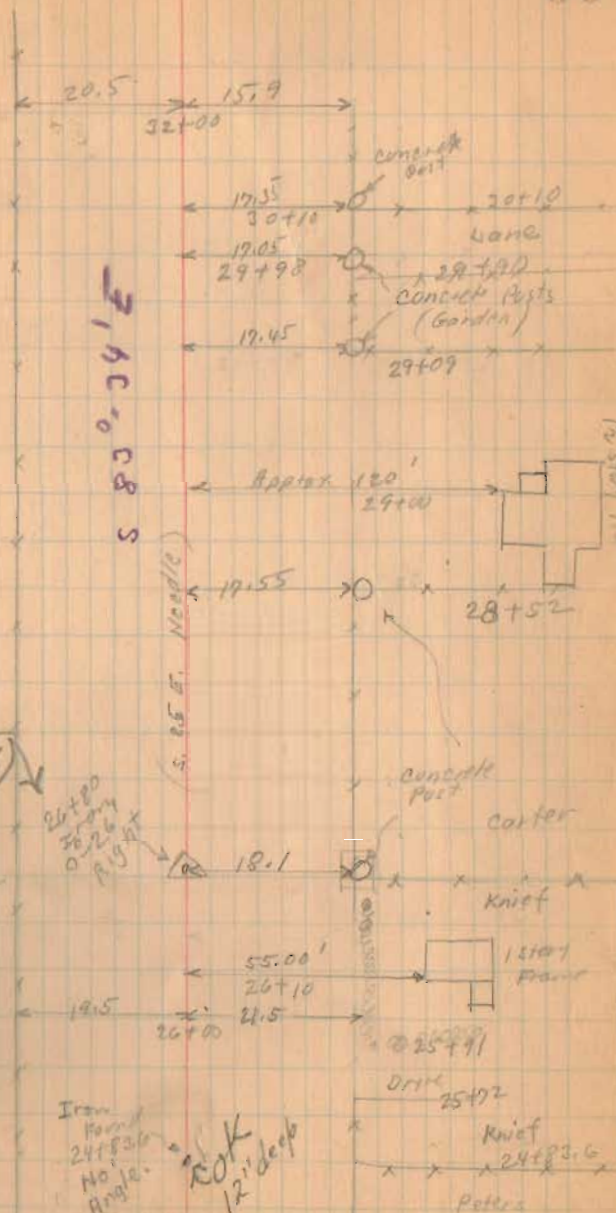


Road 45

16.50  
1.0.50  
1.9.30

3-17-32

60



S 83° 0' 34" E

OK

26+80  
26.80  
24+83.6  
24.83

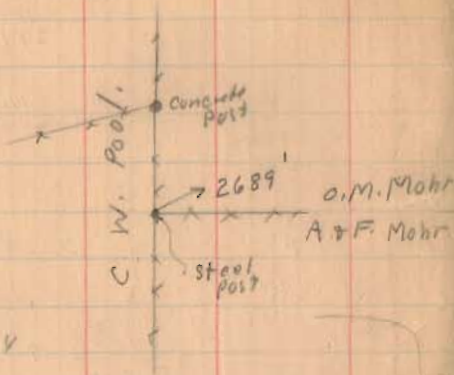
S. 83° E. Needle

Iron Road No. 1 Angle. 20' x 12' deep

1360

INDEXED ON MAP

Road 45



Dead. Vol. 117 Page 214

O.M. Mohr Dead.

Calls for 163 Rods 1" dia = 2690.2'

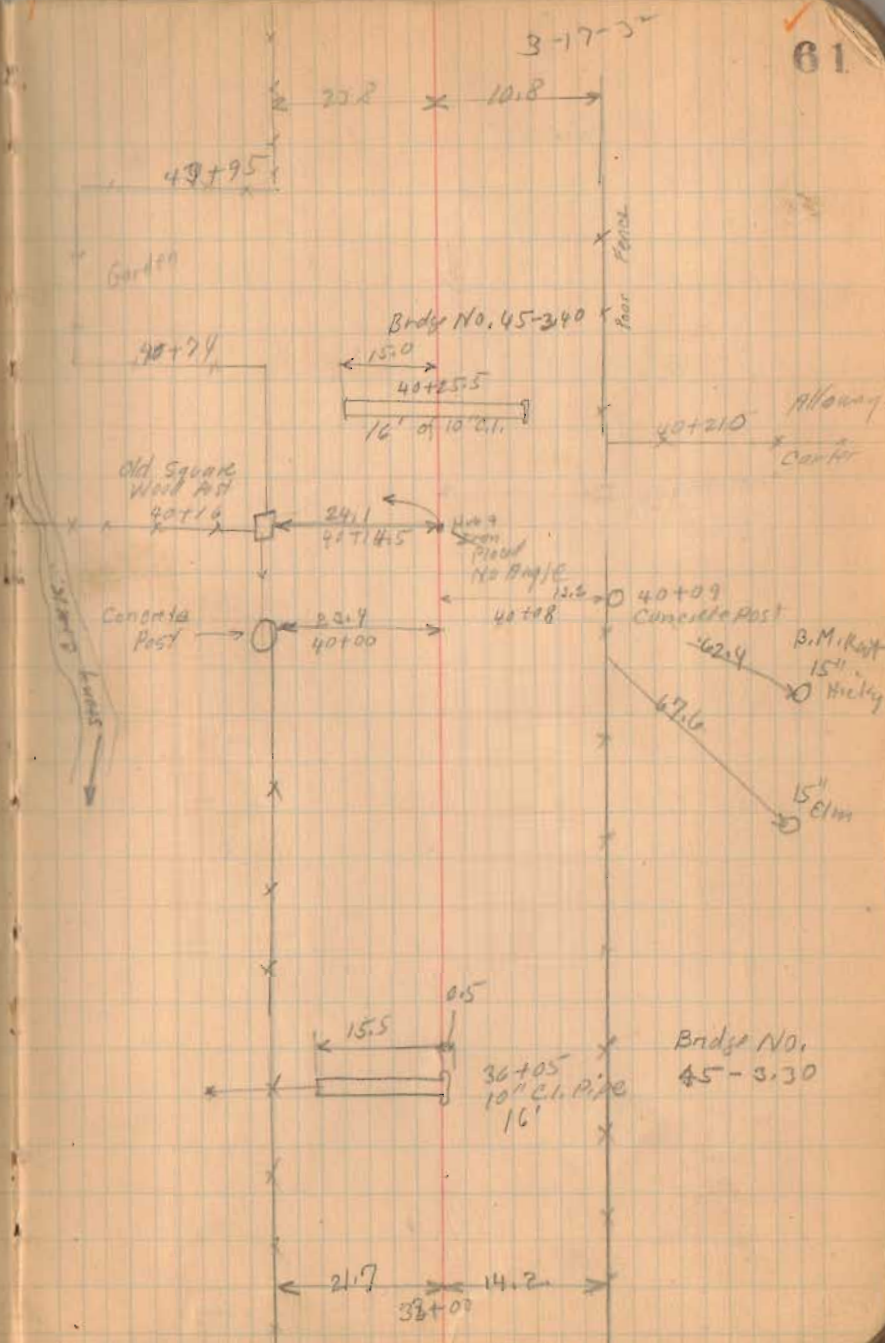
My measurement 2689'

Made straight wire 26780 To 53+28.2

INDEXED ON MAP

1360

61



3-17-32

23.2 x 10.8

49+95

Bridge No. 45-340

15.0

40+55.5

16' of 10" dia.

40+74

Old Square Well Post 40+16

24.1

40+45

Concrete Post 40+00

23.4

40+00

40+09

Concrete Post

462.4

B.M. Post 15' Hickory

47.6

15' elm

15.5

0.5

36+05

10" dia. Pipe

16'

Bridge No. 45-330

21.7

14.2

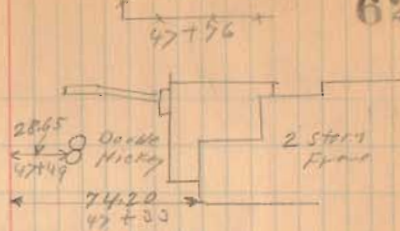
36+07



Road 45

5-17-32

62



47+10 & Drive



1360

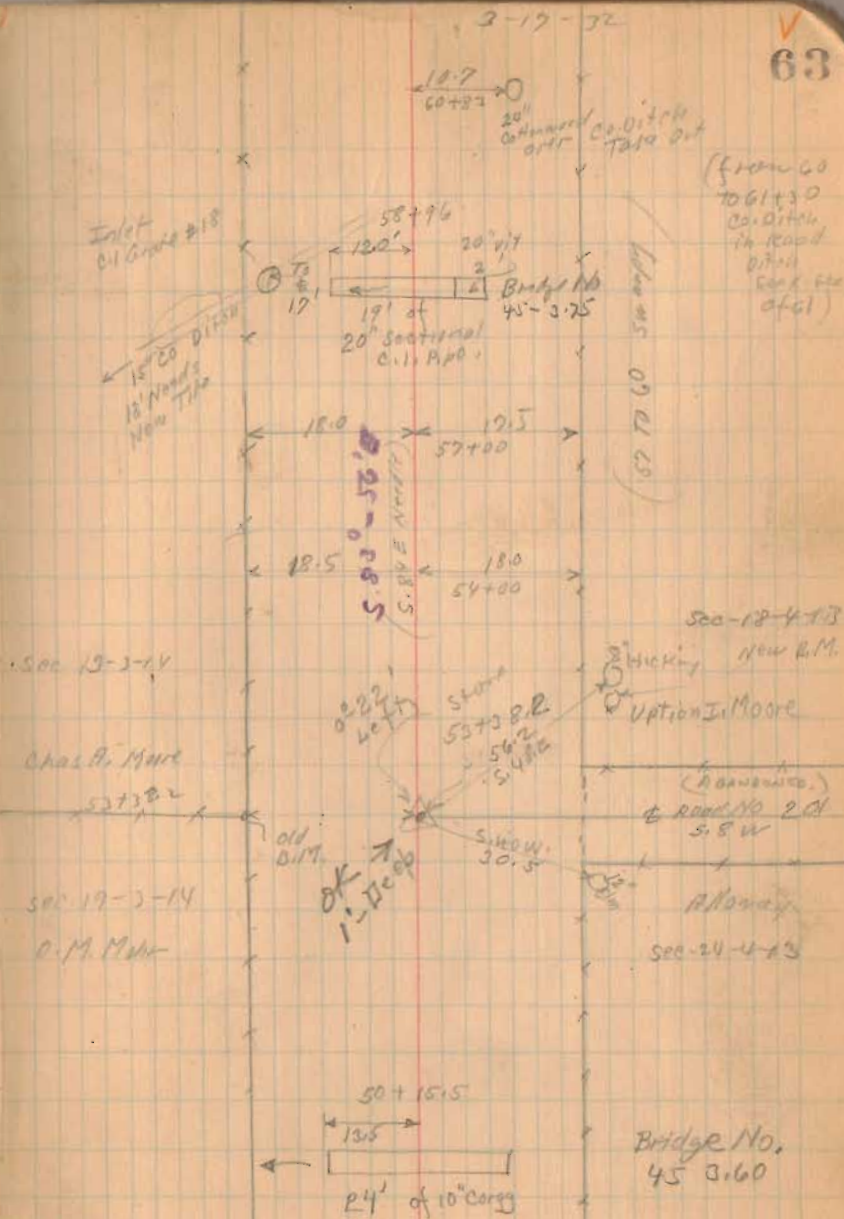
INDEXED ON MAP

Road 45

1068.62 Capex B.M. Nail Found Post Sta. 53+36.2

+ 6.59  
1070.21 H.I.  
- 1.99

1068.22 Cross Nails West side of 15" Elm.  
S.E. cor. of T Road.



1360

INDEXED ON MAP





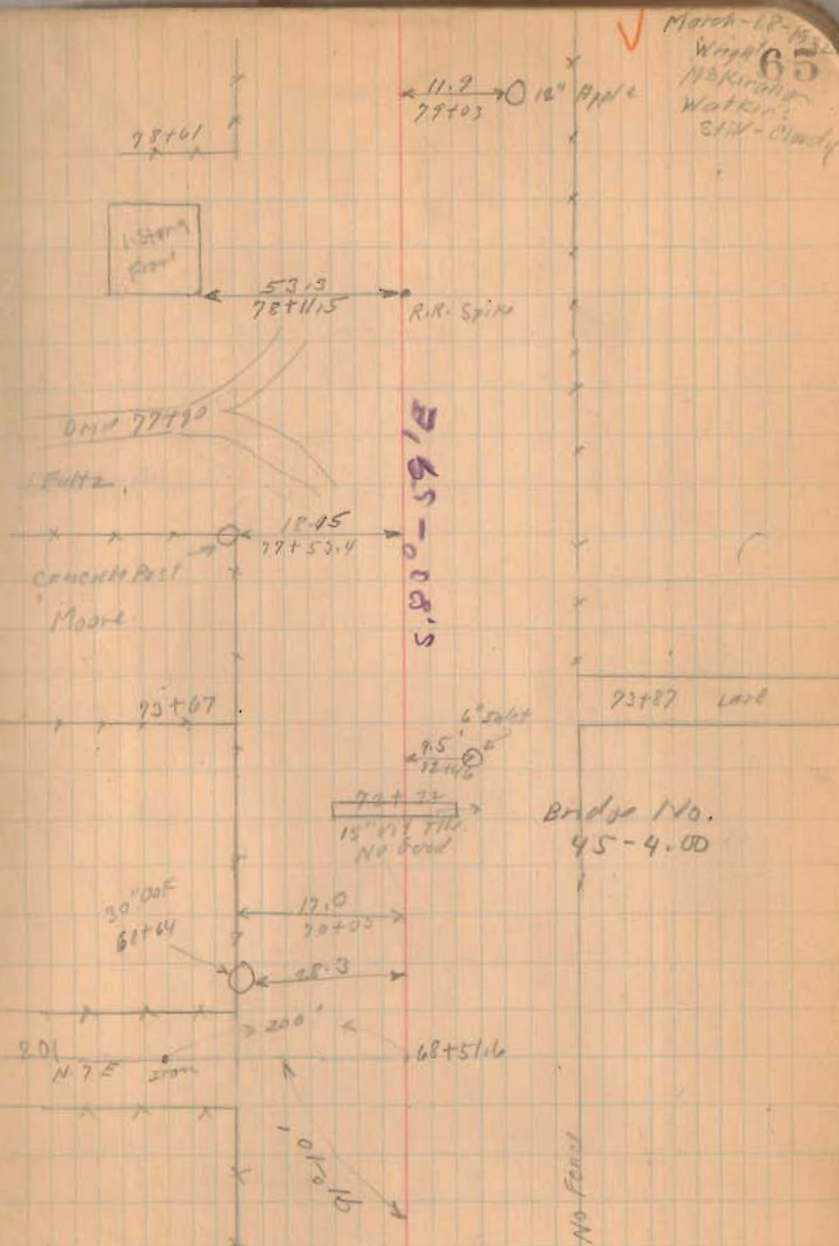
74

+ 0.31 Billion Corn. Post. Remains N.W. cor. Farley

4.70	50'	N. of	2 of 15	in Road 201
2.64	100'	"	"	"
1.26	150'	"	"	"
0.67	200'	"	"	"

58-176  
56-176  
6-176

1360  
INDEXED ON MAP





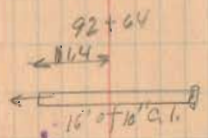
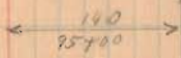
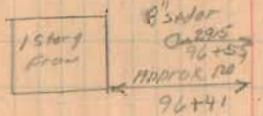
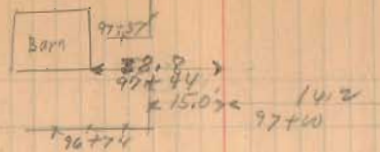
5280  
 3420  
 1860

Road 45

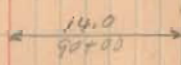
1360  
 INDEXED ON MAP

Conquata Post 21.5  
 98+03

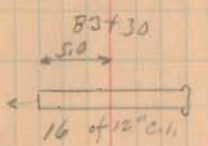
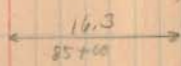
3-18-5



Bridge No.  
 45-4.45

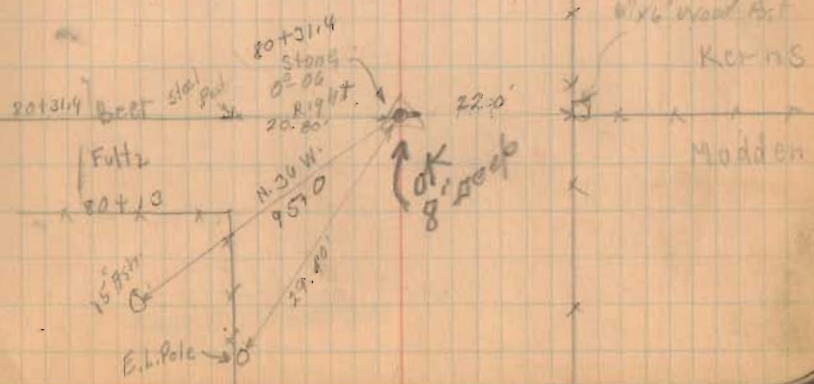


S. 80-050/6



Bridge No  
 45-4.25

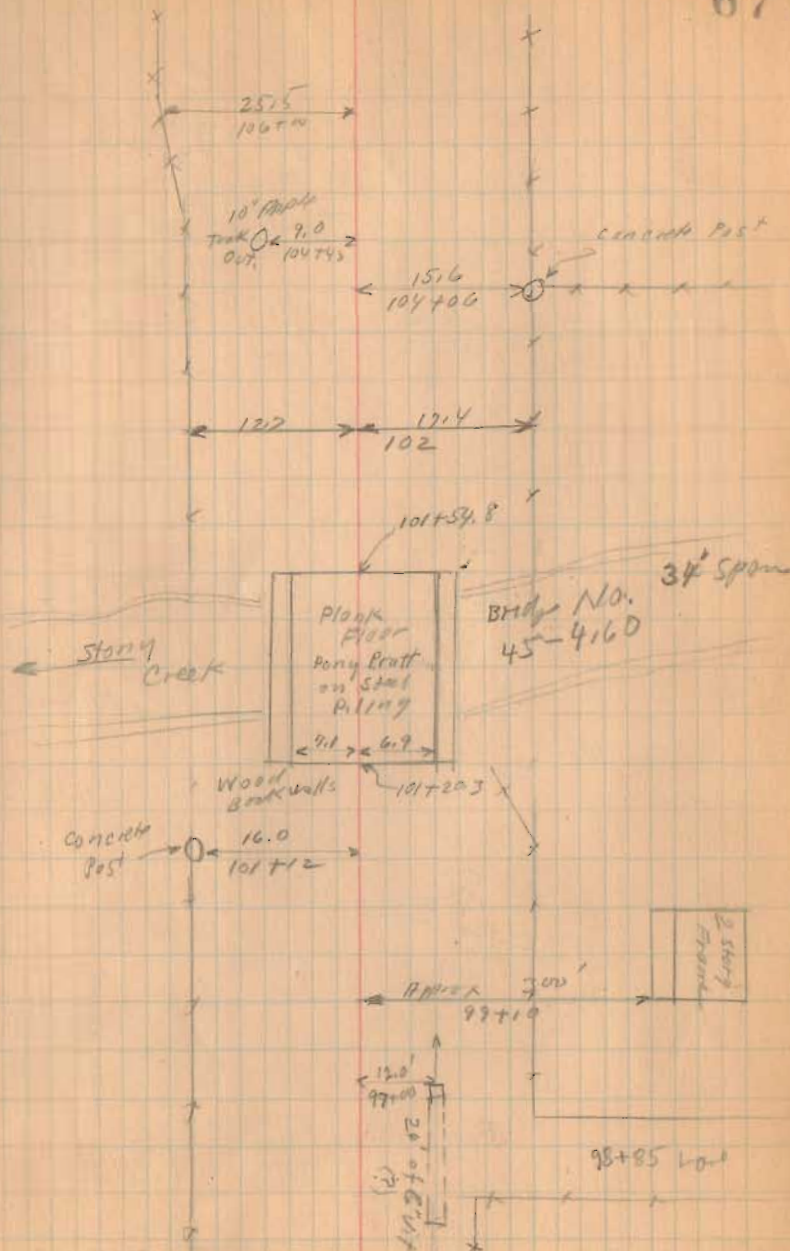
No Fence



Road 45

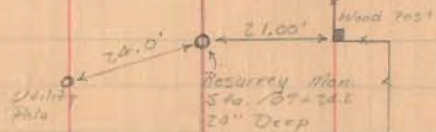
3-18-32

67





Road 45

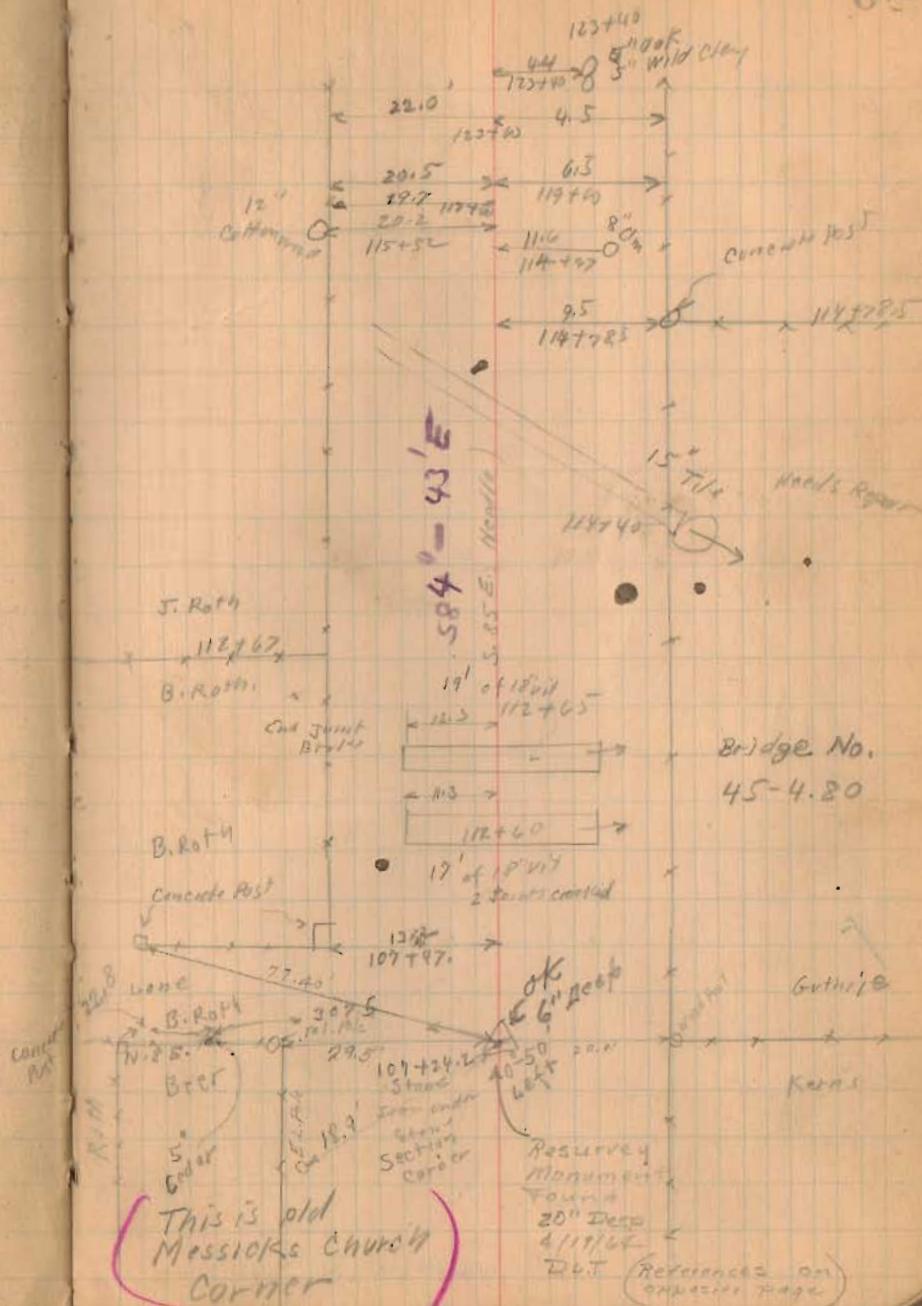


INDEXED ON MAP

1360

3-18-5

65



This is old  
Messiok's Church  
corner

Resurrey  
Monument  
Found  
20\"/>

References on  
opposite page

Road 45

INDEXED ON MAP

1360

69

