

Survey Rd 46  
Restaked 50' from  
Sta 29+25 to 30+41.3

32+00 Hubs set

46+00 Hubs set

40+00 Hubs set

35+00 Hubs set

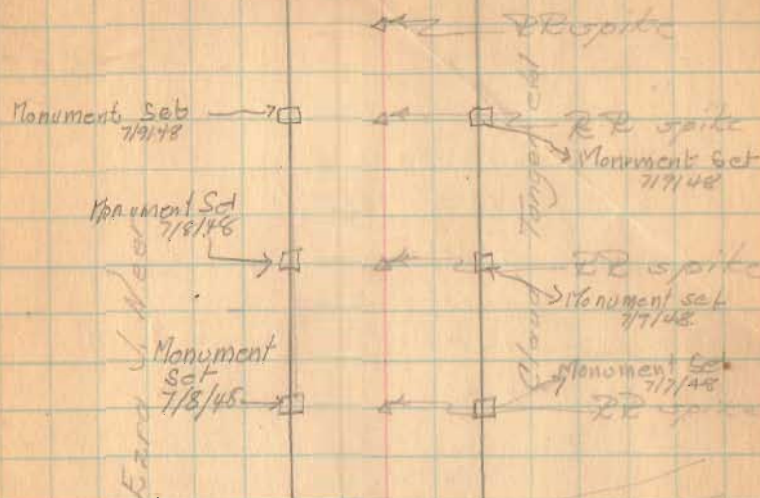
29+25 Hubs set

1308

See pg 7 for stationing  
on RR, etc.

Party: O. Keyser  
O. Shirk  
D. Mitchell

19 July 1997  
Monuments,  
7/7/48  
Cowman  
Hemphinger



Monument Set  
7/8/48

29+25

17'-05" least

RR spike set

Monument Set  
7/7/48



Plat 46 (cont'd) See pg 8  
for existing angles.

PT 56+45.67	43.67	1°-02.2'	9°-55'	Hubs set for R/W
+25	25	1°-15 1/4'	8°-52 1/4'	
56+00	100	1°-15 1/4'	7°-37 1/2'	
+75	75	1°-13 1/4'	6°-22 1/4'	
+50	50	1°-15 1/4'	5°-07'	
+25	25	1°-15 1/4'	3°-51 1/4'	
55+00	52.0	1°-15 1/4'	2°-36 1/2'	
+75	27.0	1°-21 1/4'	1°-21 1/4'	

10.57+430

Hubs set for R/W Mon

Dist. Defl. Total Defl.

PT 53+97.81	97.89	1°-10 1/2'	10°-09 1/2'	Hubs set for R/W Mon
+75	75.0	1°-17'	8°-59'	
+50	50.0	1°-17'	7°-42'	
+25	25.0	1°-17'	6°-25'	
53+00	100.0	1°-17'	5°-08'	
+75	75.0	1°-17'	3°-51'	
+50	50.0	1°-17'	2°-34'	
+25	25.0	1°-17'	1°-17'	

20.52+00

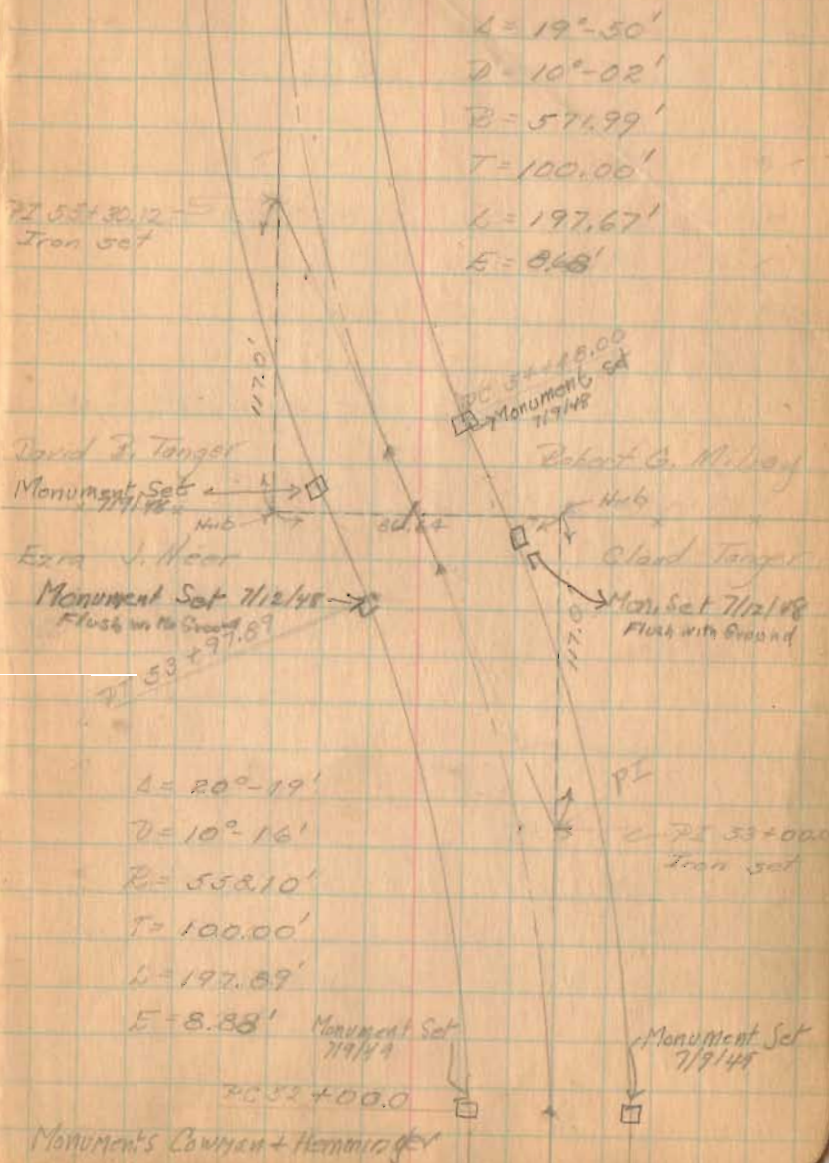
Hubs set for R/W Mon.

April 2, 1948  
Warren

71

Monument set 7/12/48

Monument set 7/12/48  
PT 56+45.67





Red 46 (cont'd)

50+100 Hubs set for R/W Mon.

76+100 Hubs set for R/W Mon.

72+273 Stake found. Hubs set for R/W Mon.

68+25.5

found 11 July '66  
66+42.0 both 1" spires  
both are bent at  
top. SW

66+42.0 Iron set - Hubs set for R/W Mon.

61+00 Hubs set for R/W monuments

PT 56+49.67 Hubs set for R/W Mon.

S.H. 234

Route 47

80+11.5  
RR spike set

72

Monument Set 7/12/48 → □ ← □ Mon. Set 7/12/48

RR spike

Monument Set 7/12/48 □ ← □ RR spike  
Mon. Set

Monument Set 7/12/48 □ ← □ Monument Set 7/12/48

72+273

Stake found  
0°-08 1/2' Right

8' Elm

66+28.5  
Iron set  
3°-06' Right

Monument Set 7/12/48

Monument Set 7/12/48

66+42.0  
Iron set

2°-50' Left  
(3°-40' Right)

Monument Set 7/12/48

Monument Set 7/12/48

RR spike set

Mon. Set 7/12/48

Mon. Set 7/12/48

David B. Taylor

7-20-36

G.A.I.  
J.H.I.  
W. Hudson  
R Cockerell

Road 21

Road 13 to Road 91

SEC SURVEYORS BOOK 514

Page 12-13-14-15

INDEXED ON MAP

1308

1/2 story frame house

new addition to house

