

Received 8/2/07 OK gcl

Wetland Reserve Program Easement

Situated in V.M.S. No. 12276, Stokes Township, Logan County, Ohio. The following described easement being part of the Robert E. Minnich Sr., Trustee of The Minnich Family Trust's 80.17 acre tract (O.R. Vol. 567, page 624), and is more particularly described as follows:

Beginning for reference at a 5/8 inch diameter iron bar shown at the intersection of Stokes Township Road No. 224 and Stokes Township Road No. 93 on a 2000 John Jauert Survey which is on file in the Logan County Engineer's Office (Index No. 9317).

Thence with the centerline of T.R. 93, S. 07° – 10' – 31" E., 166.03 feet to a point. Said point being the true point of beginning for this easement description.

Thence continuing with the centerline of T.R. 93, S. 07° – 10' – 31" E., 1363.13 feet to a point.

Thence perpendicular to the centerline of T.R. 93 and onto the aforesaid 80.17 acre tract, S. 82° – 49' – 29" W., 228.98 feet to a point.

Thence parallel with the centerline of T.R. 93, S. 07° – 10' – 31" E., 437.39 feet to a point on the North line of the Heintz Agri – Land LTD's 1145.483 acre tract (O.R. Vol. 616, page 815).

Thence with the said Heintz Agri – Land LTD's North line, S. 83° – 05' – 03" W., 1092.27 feet to a point at the N.E. corner of Charles Rodney Siebeneck's 6.699 acre tract (O.R. Vol. 456, page 907).

Thence with said Siebeneck's North line, S. 83° – 07' – 47" W., 561.56 feet to a point at the S.E. corner of said 6.699 acre tract.

Thence with said Siebeneck's East line, N. 01° – 07' – 37" W., 1968.20 feet to a point in the centerline of T.R. 224, being the N.E. corner of said Siebeneck's 6.699 acre tract.

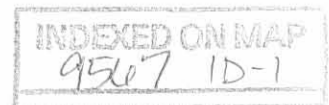
Thence with the centerline of T.R. 224, N. 82° – 46' – 40" E., 222.72 feet to a point.

Thence onto said 80.17 acre tract, S. 01° – 07' – 37" E., 530.49 feet to a point.

Thence parallel to the centerline of T.R. 224, N. 82° – 46' – 40" E., 350.24 feet to a point.

Thence N. 01° – 07' – 37" W., 530.49 feet to a point on the centerline of T.R. 224.

Thence with the centerline of T.R. 224, N. 82° – 46' – 40" E., 912.33 feet to a point.



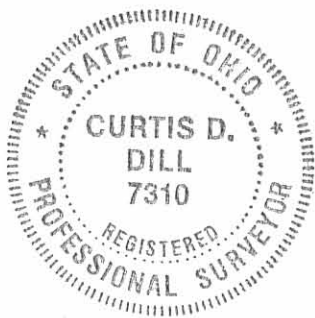
Thence parallel with T.R. 93 and onto said 80.17 acre tract, S. 07° – 10' – 31" E., 166.03 feet to a point.

Thence parallel with T.R. 224, N. 82° – 46' – 40" E., 190.11 feet to the point of beginning.

The above described Wetland Reserve Program Easement encompasses 72.898 acres more or less of which 1.722 acres lie within the road right of way.

Basis of bearing being the centerline of Stokes Township Road No. 93 (S. 07° – 10' – 31" E.) as shown on a 2000 Jauert Survey (Index No. 9317) on file in the Logan County Engineer's Office.

This easement description was prepared from surveys and deeds of record by Curtis D. Dill, registered surveyor No. 7310, in July 2007.



Curtis D. Dill

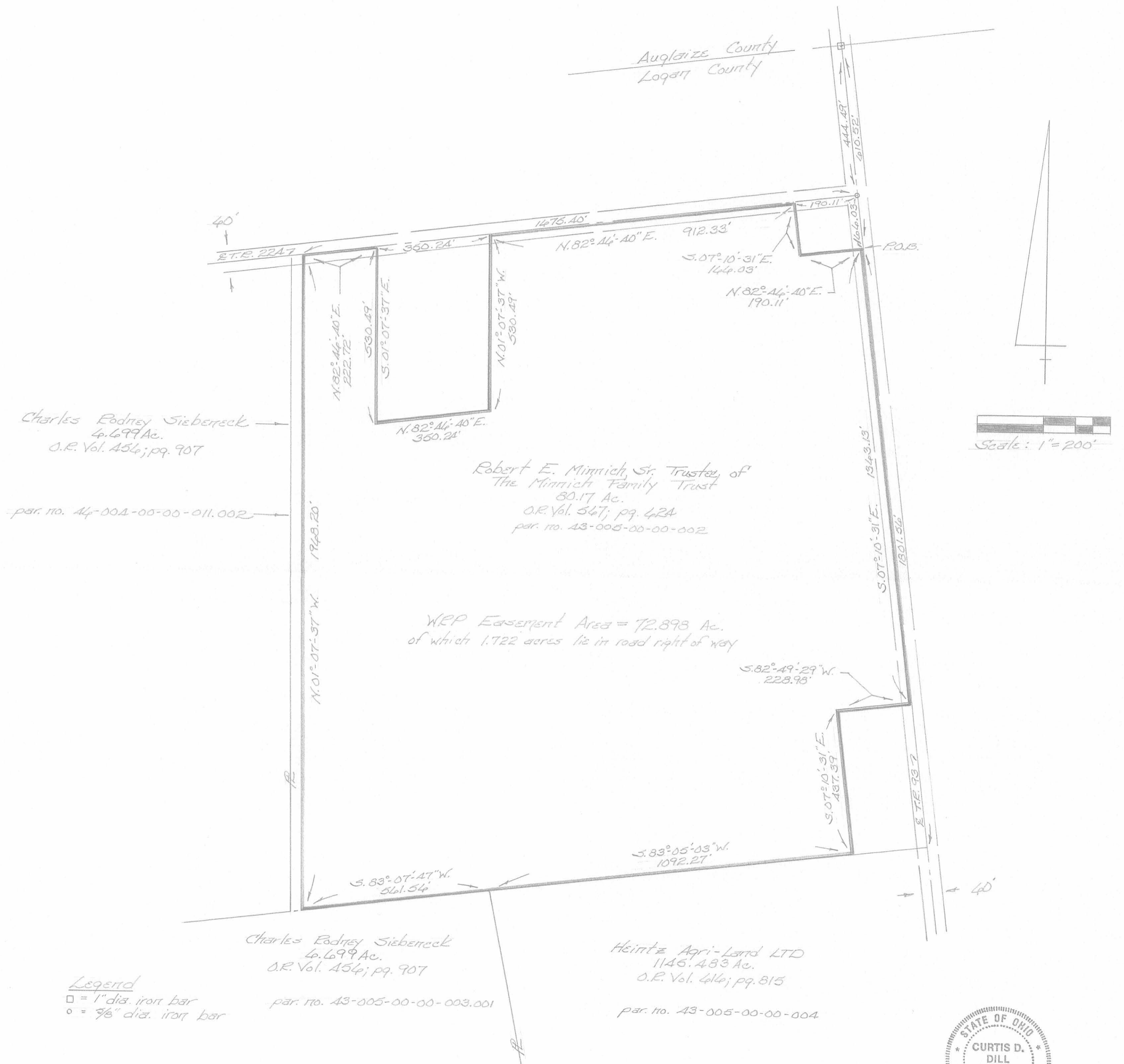
Curtis D. Dill
Deputy Surveyor
Logan County Engineers Office
Registered Surveyor No. 7310

INDEXED ON MAP
9507 1D-2

Wetland Reserve Program Easement

V.M.S. 12274
Stokes Township
Logan County, Ohio
July 2007

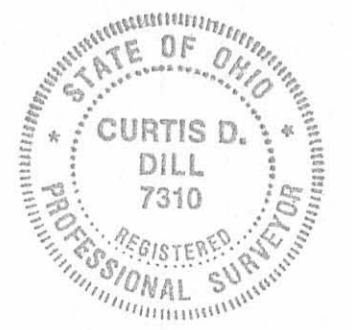
Part of parcel no. 43-005-00-00-002



Basis of bearing being the centerline of Logan County Road No. 93 (S. 07° 10' 31" E.) as shown on a 2000 John W. Jauert survey (Index No. 9317) on file in the Logan County Engineers Office.

This easement plat was prepared from surveys and deeds of record by Curtis D. Dill, registered surveyor no. 7310, in July 2007.

Curtis D. Dill
Curtis D. Dill
Deputy Surveyor
Logan Co. Engineers Office
Registered Surveyor No. 7310



Lee Surveying and Mapping Co., Inc.

Land Surveys • Topography • Subdivisions • Construction Layout

117 N. Madriver St.
Bellefontaine OH 43311



Phone: (937) 593-7335
Fax: (937) 593-7444
surveys@lsminc.us

THE MINNICH FAMILY TRUST 78.617 ACRES

Lying in Virginia Military Survey 12276, Stokes Township, Logan County, Ohio.

Being out of the Minnich Family Trust 80.17 acre tract as deeded and described in Official Record 567, Page 624 of the Logan County Records of Deeds and being more particularly described as follows:

Beginning at a 5/8 inch iron rod found at the intersection of center-lines of Township Road 224 (60 feet wide) and Township Road 93 (60 feet wide).

THENCE, with the center-line of Township Road 93, S 07°-10'-31"E, a distance 1569.41 feet to a MAG nail set.

THENCE, S 85°-58'-57"W, a distance of 188.27 feet to a 5/8 inch iron rod set, passing a 5/8 inch iron rod set at 20.03 feet.

THENCE, S 10°-38'-15"E, a distance of 409.21 feet to a 5/8 inch iron rod set.

THENCE, with a north line of the Heintz Agriland, LTD. part of the 1145.483 acre tract (O.R. 616, Pg. 815) and with a north line of the Charles Rodney Siebeneck 6.699 acre tract (O.R. 456, Pg. 907), S 83°-12'-32"W, a distance of 1722.38 feet to a 5/8 inch iron rod set, passing a stone found at 1160.60 feet.

THENCE, with a east line of the said 6.699 acre tract, N 01°-02'-46"W, a distance of 1968.20 feet to a railroad spike found, passing a 5/8 inch iron rod found at 1948.12 feet.

THENCE, with the center-line of Township Road 224, N 82°-51'-31"E, a distance of 1675.47 feet to the point of beginning.

Containing 78.617 acre tract, of which 2.214 acre is within the highway rights-of-way.

Property is subject to any and all previous easements and rights-of-way of record.

The basis for bearings is the center-line of Township Road 93, being S 07°-10'-31"E, and all other bearings are from angles and distances measured in a field survey by Lee Surveying and Mapping Co., Inc. on October 16, 2012.

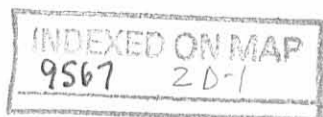
Description prepared by:

William K. Bruce
Professional Surveyor 7437
October 16, 2012



ORIGINAL STAMP IN GREEN

L-894

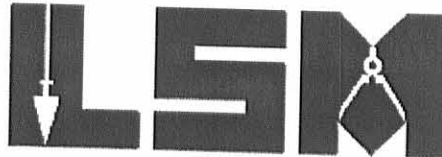


REC'D 10-19-12 SMY OK

Lee Surveying and Mapping Co., Inc.

Land Surveys • Topography • Subdivisions • Construction Layout

117 N. Madriver St.
Bellefontaine OH 43311



Phone: (937) 593-7335
Fax: (937) 593-7444
surveys@lsminc.us

THE MINNICH FAMILY TRUST 1.627 ACRES

Lying in Virginia Military Survey 12276, Stokes Township, Logan County, Ohio.

Being out of the Minnich Family Trust 80.17 acre tract as deeded and described in Official Record 567, Page 624 of the Logan County Records of Deeds and being more particularly described as follows:

Commencing at a 5/8 inch iron rod found at the intersection of center-lines of Township Road 224 (60 feet wide) and Township Road 93 (60 feet wide).

THENCE, with the center-line of Township Road 93, S 07°-10'-31"E, a distance of 1569.41 feet to a MAG nail set at the TRUE POINT OF BEGINNING.

THENCE, with the center-line of Township Road 93, S 07°-10'-31"E, 399.20 feet to a MAG nail set.

THENCE, with a north line of the Heintz Argiland LTD., part of the 1145.483 acre tract (O.R. 616, Pg. 815), S 83°-12'-32"W, a distance of 163.28 feet to a 5/8 inch iron rod set, passing a 5/8 inch iron rod found at 20.20 feet.

THENCE, N 10°-38'-15"W, a distance of 409.21 feet to a 5/8 inch iron rod set.

THENCE, N 85°-58'-57"E, a distance of 188.27 feet to the point of beginning, passing a 5/8 inch iron rod set at 168.24 feet.

Containing 1.627 acre tract, of which 0.275 acre is within the highway right-of-way.

Property is subject to any and all previous easements and rights-of-way of record.

The basis for bearings is the center-line of Township Road 93, being S 07°-10'-31"E, and all other bearings are from angles and distances measured in a field survey by Lee Surveying and Mapping Co., Inc. on October 16, 2012.

Description prepared by:

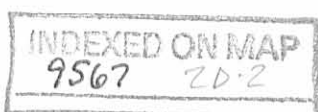


ORIGINAL STAMP IN GREEN

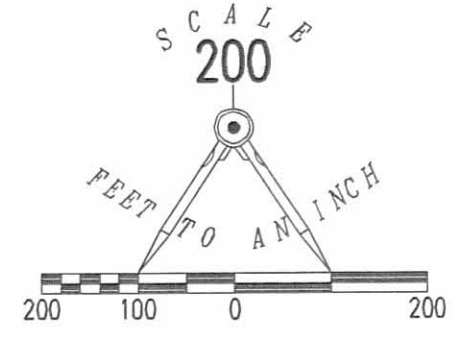
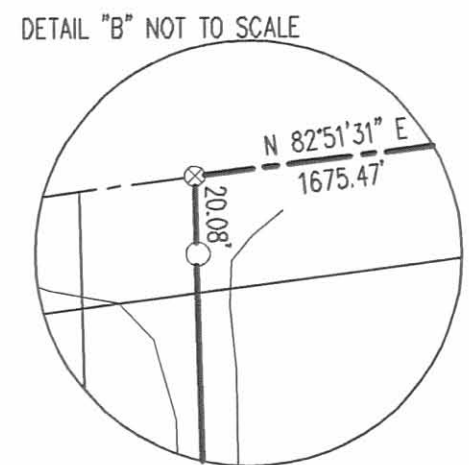
A handwritten signature in cursive script that reads 'William K. Bruce'.

William K. Bruce
Professional Surveyor 7437
October 16, 2012

L-894



REC'D 10-19-12 smy al



- LEGEND
- 5/8 INCH IRON ROD SET WITH PLASTIC I.D. CAP STAMPED "LSM7437"
 - 5/8 INCH IRON ROD FOUND
 - MAG NAIL SET
 - ⊗ RAILROAD SPIKE FOUND
 - ⊠ STONE FOUND

TOWNSHIP ROAD 224 (60')

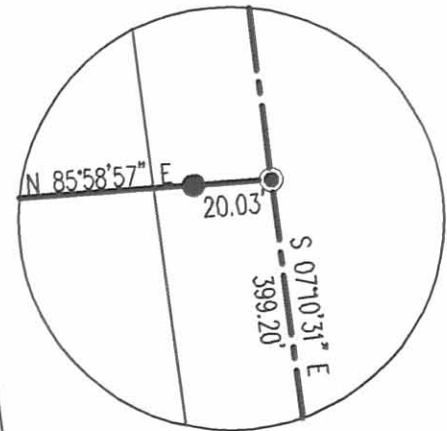
78.617 ACRES

OF WHICH 2.214 ACRE IS WITHIN THE HIGHWAY RIGHTS-OF-WAY.

THE MINNICH FAMILY TRUST
80.17 ACRE TRACT
O.R. 567, PG. 624

16± WIDE CRUSHED STONE DRIVE

DETAIL "B" NOT TO SCALE



DETAIL "B"

1.627 ACRES

OF WHICH 0.275 ACRE IS WITHIN THE HIGHWAY RIGHT-OF-WAY.

A SURVEY OF
78.617 ACRE AND 1.627 ACRE TRACTS OUT OF
THE MINNICH FAMILY TRUST
80.17 ACRE TRACT
OFFICIAL RECORD 567, PAGE 624
VIRGINIA MILITARY SURVEY 12276
STOKES TOWNSHIP
LOGAN COUNTY, OHIO

SURVEYED BY:

William K. Bruce
WILLIAM K. BRUCE
PROFESSIONAL SURVEYOR 7437
OCTOBER 16, 2012



COPYRIGHT 2012 BY:
LEE SURVEYING & MAPPING CO., INC.
117 North Madriver Street
BELLEFONTAINE, OHIO 43311
(937) 593-7335
WWW.LSMINC.US
surveys@lsminc.us
ADW D1012 8941012 L-894-2

2 WORKING DAYS
BEFORE YOU DIG
CALL TOLL FREE 800-362-2764
OHIO UTILITIES PROTECTION SERVICE

INDEXED ON MAP
9567 ZP

DETAIL "A" 9.7'

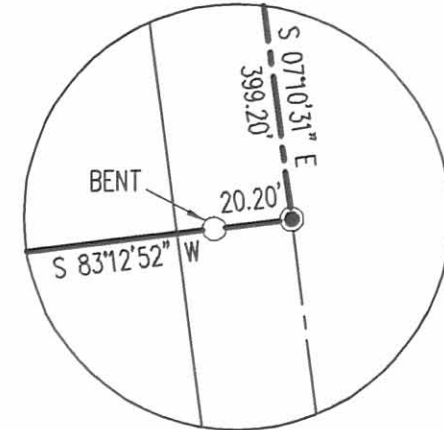
N 01°02'46" W
1968.20'

BASIS FOR BEARINGS
S 07°10'31" E
1569.41'

N 85°58'57" E
188.27'
N 10°38'15" W
409.21'

TOWNSHIP ROAD 93 (60')

DETAIL "C" NOT TO SCALE



DETAIL "C"

CHARLES RODNEY SIEBENECK
6.699 ACRE TRACT
O.R. 456, PG. 907

HEINTZ AGRILAND, LTD.
1145.483 ACRE TRACT
O.R. 616, PG. 815

3.6'

561.78'
S 83°12'32" W

1160.60'
S 83°12'32" W

163.28'
S 83°12'32" W