

REC'D 11-19-02 SUM OK

Lee Surveying and Mapping Co., Inc.

R

Land Surveys • Topography • Subdivisions • Construction Layout

117 N. Madriver St.
Bellefontaine OH 43311



Phone: (937) 593-7335
Fax: (937) 593-7444

CONRY INVESTMENTS, LTD 1.000 ACRE

Lying in Section 28, Town 6, Range 8, Stokes Township, Logan County, Ohio.

Being out of the Conry Investments, Ltd. original 40.00 acre tract as deeded and described in Official Record 475, Page 524, Tract C, Tract I, of the Logan County Records of Deeds and being more particularly described as follows:

Beginning at a stone found in a monument box on the northwest corner of the southwest quarter of Section 28 at the intersection of the center-lines of Township Road 85 and Township Road 84.

THENCE, with the west line of Section 28 and the center-line of Township Road 84 (50 feet wide), S 1°-15'-00" E, a distance of 6.32 feet to a boat spike found at the TRUE POINT OF BEGINNING.

THENCE, with the south line of the Thomas Hoffman 1.000 acre tract, (O.R. 84, Pg. 894 and O.R. 388, Pg. 715), N 88°-56'-48" E, a distance of 288.38 feet to a 5/8 inch iron rod set, passing a 5/8 inch iron rod found at 25.00 feet.

THENCE, with the east line of the said 1.000 acre tract extended, S 1°-13'-43" E, a distance of 151.07 feet to a 5/8 inch iron rod set.

THENCE, S 88°-56'-48" W, a distance of 288.32 feet to a railroad spike set, passing a 5/8 inch iron rod set at 263.32 feet.

THENCE, with the west line of Section 28 and the center-line of Township Road 84, N 1°-15'-00" W, a distance of 151.07 feet to the point of beginning.

Containing 1.000 acre, of which 0.087 acre is within the highway right-of-way.

The basis for bearings is the west line of Section 28, being N 1°-15'-00" W, and all other bearings are from angles and distances measured in a field survey by Lee Surveying and Mapping Co., Inc. on October 25, 2002.

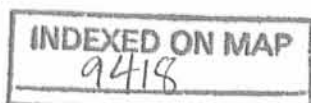
Description prepared by:



ORIGINAL STAMP IN GREEN

Jeffrey I. Lee
Professional Surveyor 6359
November 10, 2002

L-197

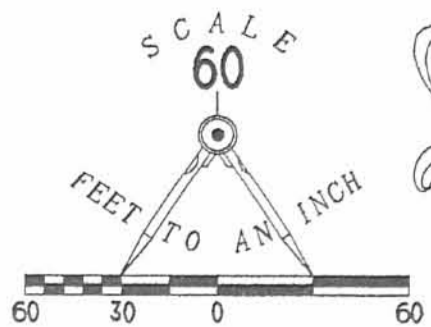


ID

REV'D 11-19-02 8M OK

LEGEND

- 5/8" IRON ROD SET
- 5/8" IRON ROD FOUND
- ⊕ RAILROAD SPIKE SET
- BOAT SPIKE FOUND
- ⊠ STONE FOUND IN MONUMENT BOX



TOWNSHIP ROAD 84 (50' WIDE)

T.R. 85

SECTION 29
(BASIS FOR BEARINGS)
N 01°15'00"W

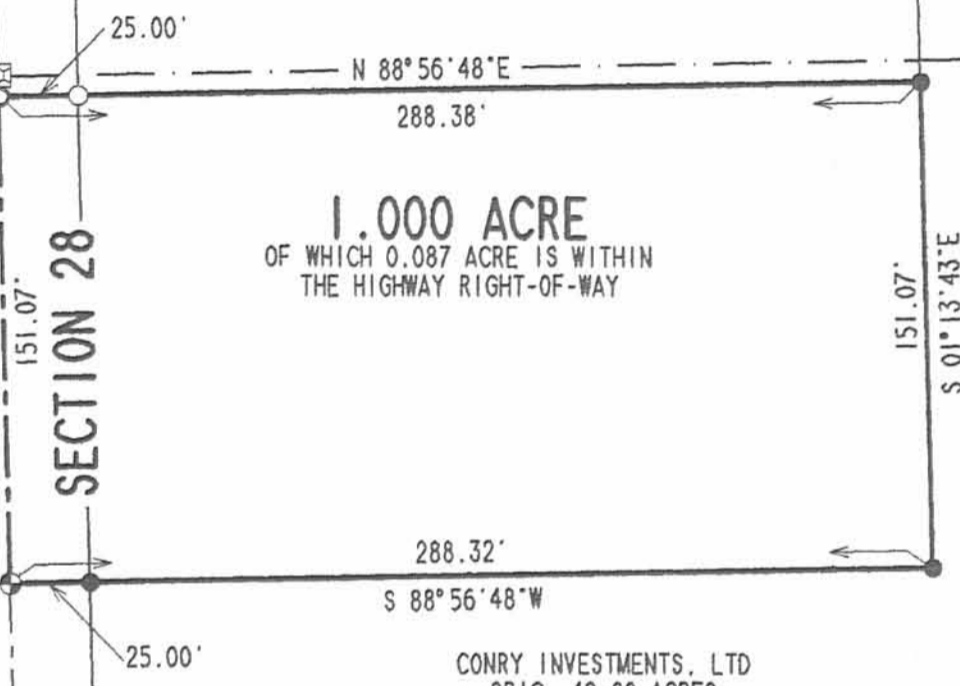
SECTION 28

THOMAS HOFFMAN
1.000 ACRES
O.R. 84, PG. 894
SURVEYOR'S AFFIDAVIT
O.R. 388, PG. 715

1.000 ACRE
OF WHICH 0.087 ACRE IS WITHIN
THE HIGHWAY RIGHT-OF-WAY

CONRY INVESTMENTS, LTD
ORIG. 40.00 ACRES
O.R. 475, PG. 524
TRACT C, TRACT 1

6.32'
S 01°15'00"E



SURVEY OF 1.000 ACRE OUT OF
THE CONRY INVESTMENTS, LTD
ORIGINAL 40.00 ACRE TRACT
OFFICIAL RECORD 475, PAGE 524, TRACT C, TRACT 1
SECTION 28, TOWN 6, RANGE 8
STOKES TOWNSHIP
LOGAN COUNTY, OHIO



SURVEYED BY:

Jeffrey I. Lee
JEFFREY I LEE
PROFESSIONAL SURVEYOR 6359
OCTOBER 25, 2002

COPYRIGHT 2002 BY:
LEE SURVEYING & MAPPING CO., INC.
117 North Madriver Street
BELLEFONTAINE, OHIO 43311
(937) 593-7335

2 WORKING DAYS
BEFORE YOU DIG
CALL TOLL FREE **800-362-2764**
OHIO UTILITIES PROTECTION SERVICE.

INDEXED ON MAP
9418 1P

D-407 THOFF L-197-3