

REV'D 11-20-01 SML/ok

# Lee Surveying and Mapping Co., Inc.

Land Surveys • Topography • Subdivisions • Construction Layout

117 N. Madriver St.  
Bellefontaine OH 43311



Phone: (937) 593-7335  
Fax: (937) 593-7444

## EVERHARDT 0.047 ACRE TRACT A

Lying in Virginia Military Survey 12276, Stokes Township, Logan County, Ohio.

Being out of Lot 47 of Houser Allotment as recorded in Plat Cabinet A, Slide 357 of the Logan County Records of Plats and being more particularly described as follows:

Beginning at a 5/8 inch square iron rod found on the northwesterly line of a 25 feet wide private drive at the most easterly corner of Lot 46 of Houser Allotment.

THENCE, with the northeasterly line of Lot 46, N 51°-04'-32" W, a distance of 132.99 feet to a 3/4 inch iron pipe found on the northeast corner of Lot 46.

THENCE, with the northwesterly line of Lot 47, N 46°-28'-45" E, a distance of 21.14 feet to a 5/8 inch iron rod set.

THENCE, S 45°-53'-59" E, a distance of 100.72 feet to a 5/8 inch iron rod set.

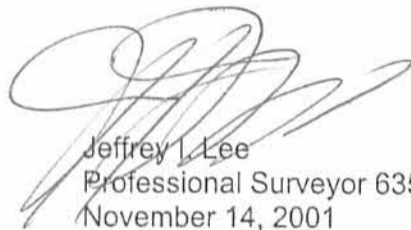
THENCE, S 49°-58'-58" E, a distance of 33.70 feet to a 5/8 inch iron rod set.

THENCE, with the northwesterly line of the said 25 feet wide private drive, S 57°-34'-40" W, a distance of 11.85 feet to the point of beginning.

Containing 0.047 acre.

The basis for bearings is the west line of Lot 47 at the south line of Lot 52, being N 6°-14'-15" E, and all other bearings are from angles and distances measured in a field survey by Lee Surveying and Mapping Co., Inc. on November 7, 2001.

Description prepared by:

  
Jeffrey I. Lee  
Professional Surveyor 6359  
November 14, 2001



L-3267

ORIGINAL STAMP IN GREEN

INDEXED ON MAP  
9383

1D-1

REC'D 11-20-01 SMM OK  
**Lee Surveying and Mapping Co., Inc.**

Land Surveys • Topography • Subdivisions • Construction Layout

117 N. Madriver St.  
Bellefontaine OH 43311



Phone: (937) 593-7335  
Fax: (937) 593-7444

**EVERHARDT  
0.330 ACRE  
TRACT B**

Lying in Virginia Military Survey 12276, Stokes Township, Logan County, Ohio.

Being out of Lot 47 of Houser Allotment as recorded in Plat Cabinet A, Slide 357 of the Logan County Records of Plats and being more particularly described as follows:

Beginning at a 5/8 inch square iron rod found on the northwesterly line of a 25 feet wide private drive at the most easterly corner of Lot 46 of Houser Allotment.

THENCE, with the northwesterly line of the 25 feet wide private drive, N 57°-34'-40" E, a distance of 11.85 feet to a 5/8 inch iron rod set at the TRUE POINT OF BEGINNING.

THENCE, N 49°-58'-58" W, a distance of 33.70 feet to a 5/8 inch iron rod set.

THENCE, N 45°-53'-59" W, a distance of 100.72 feet to a 5/8 inch iron rod set.

THENCE, with the northwesterly lines of Lot 47, the following two (2) courses:

N 46°-28'-45" E, a distance of 35.26 feet to a 3/4 inch iron pipe found.

N 34°-27'-14" E, a distance of 48.33 feet to a 5/8 inch iron rod set.

THENCE, S 64°-39'-11" E, a distance of 121.27 feet to a 5/8 inch iron rod set.

THENCE, with the lines of the 25 feet wide private drive, the following three (3) courses:

S 9°-55'-07" W, a distance of 53.05 feet to a 5/8 inch square iron rod found.

S 35°-13'-04" W, a distance of 36.91 feet to a 5/8 inch square iron rod found.

S 57°-34'-40" W, a distance of 40.22 feet to the point of beginning.

Containing 0.330 acre.

The basis for bearings is the west line of Lot 47 at the south line of Lot 52, being N 6°-14'-15" E, and all other bearings are from angles and distances measured in a field survey by Lee Surveying and Mapping Co., Inc. on November 7, 2001.

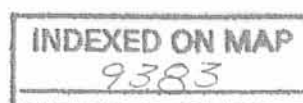
Description prepared by:

  
Jeffrey I. Lee  
Professional Surveyor 6359  
November 14, 2001



L-3267

ORIGINAL STAMP IN GREEN



1D-2

REC'D 11-20-01 SMM @k

# Lee Surveying and Mapping Co., Inc.

Land Surveys • Topography • Subdivisions • Construction Layout

117 N. Madriver St.  
Bellefontaine OH 43311



Phone: (937) 593-7335  
Fax: (937) 593-7444

## EVERHARDT 0.149 ACRE TRACT C

Lying in Virginia Military Survey 12276, Stokes Township, Logan County, Ohio.

Being out of Lot 47 of Houser Allotment as recorded in Plat Cabinet A, Slide 357 of the Logan County Records of Plats and being more particularly described as follows:

Beginning at a 5/8 inch square iron rod found on the northwesterly line of a 25 feet wide private drive at the most easterly corner of Lot 46 of Houser Allotment.

THENCE, with the lines of the 25 feet wide private drive, the following three (3) courses:

N 57°-34'-40" E, a distance of 52.07 feet to a 5/8 inch square iron rod found;

N 35°-13'-04" E, a distance of 36.91 feet to a 5/8 inch square iron rod found;

N 9°-55'-07" E, a distance of 53.05 feet to a 5/8 inch iron rod set at the TRUE POINT OF BEGINNING.

THENCE, N 64°-39'-11" W, a distance of 121.27 feet to a 5/8 inch iron rod set.

THENCE, with the west lines of Lot 47, the following two (2) courses:

N 34°-27'-14" E, a distance of 26.67 feet to a 3/4 inch iron pipe found;

N 6°-14'-15" E, a distance of 25.50 feet to a 5/8 inch iron rod set.

THENCE, S 59°-11'-14" E, a distance of 29.97 feet to a 5/8 inch iron rod set.

THENCE, S 66°-37'-43" E, a distance of 28.52 feet to a 5/8 inch iron rod set.

THENCE, N 25°-50'-07" E, a distance of 16.38 feet to a 5/8 inch iron rod set.

THENCE, S 72°-50'-19" E, a distance of 28.83 feet to a 5/8 inch iron rod set.

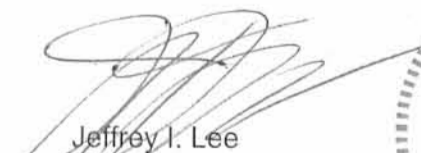
THENCE, S 67°-09'-41" E, a distance of 19.12 feet to a 5/8 inch iron rod set.

THENCE, with the west line of the 25 feet wide private drive, S 9°-55'-07" W, a distance of 72.48 feet to the point of beginning.

Containing 0.149 acre.

The basis for bearings is the west line of Lot 47 at the south line of Lot 52, being N 6°-14'-15" E, and all other bearings are from angles and distances measured in a field survey by Lee Surveying and Mapping Co., Inc. on November 7, 2001.

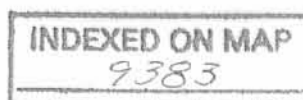
Description prepared by:

  
Jeffrey I. Lee  
Professional Surveyor 6359  
November 14, 2001



L-3267

ORIGINAL STAMP IN GREEN



1D-3

REC'D 11-20-01 SMJ OK

# Lee Surveying and Mapping Co., Inc.

Land Surveys • Topography • Subdivisions • Construction Layout

117 N. Madriver St.  
Bellefontaine OH 43311



Phone: (937) 593-7335  
Fax: (937) 593-7444

## EVERHARDT 0.078 ACRE TRACT D

Lying in Virginia Military Survey 12276, Stokes Township, Logan County, Ohio.

Being out of Lot 47 of Houser Allotment as recorded in Plat Cabinet A, Slide 357 of the Logan County Records of Plats and being more particularly described as follows:

Beginning at a 5/8 inch square iron rod found on the northwesterly line of a 25 feet wide private drive at the most easterly corner of Lot 46 of Houser Allotment.

THENCE, with the lines of the 25 feet wide private drive, the following three (3) courses:

N 57°-34'-40" E, a distance of 52.07 feet to a 5/8 inch square iron rod found;

N 35°-13'-04" E, a distance of 36.91 feet to a 5/8 inch square iron rod found;

N 9°-55'-07" E, a distance of 125.53 feet to a 5/8 inch iron rod set at the TRUE POINT OF BEGINNING.

THENCE, N 67°-09'-41" W, a distance of 19.12 feet to a 5/8 inch iron rod set.

THENCE, N 72°-50'-19" W, a distance of 28.83 feet to a 5/8 inch iron rod set.

THENCE, S 25°-50'-07" W, a distance of 16.38 feet to a 5/8 inch iron rod set.

THENCE, N 66°-37'-43" W, a distance of 28.52 feet to a 5/8 inch iron rod set.

THENCE, N 59°-11'-14" W, a distance of 29.97 feet to a 5/8 inch iron rod set.

THENCE, with the west line of Lot 47, N 6°-14'-15" E, a distance of 39.84 feet to a 5/8 inch iron rod set.

THENCE, N 81°-51'-05" E, a distance of 4.90 feet to a 3/4 inch iron pipe found.

THENCE, with the south line of a 15 feet wide private drive, S 66°-57'-46" E, a distance of 15.05 feet to a 3/4 inch iron pipe found.

THENCE, with the lines of Lot 48, the following three (3) courses:

S 68°-18'-08" E, a distance of 47.76 feet to a 5/8 inch iron rod set;

S 31°-40'-19" W, a distance of 15.00 feet to a 5/8 inch square iron rod found.

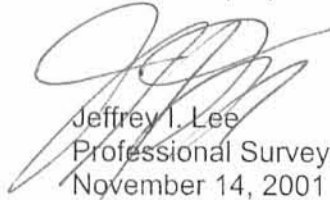
S 67°-09'-41" E, a distance of 50.80 feet to a 3/4 inch iron pipe found.

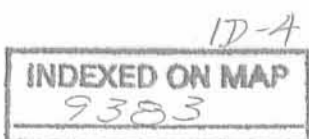
THENCE, with the west line of the said 25 feet wide private drive, S 9°-55'-07" W, a distance of 12.31 feet to the point of beginning.

Containing 0.078 acre.

The basis for bearings is the west line of Lot 47 at the south line of Lot 52, being N 6°-14'-15" E, and all other bearings are from angles and distances measured in a field survey by Lee Surveying and Mapping Co., Inc. on November 7, 2001.

Description prepared by:

  
Jeffrey I. Lee  
Professional Surveyor 6359  
November 14, 2001



ORIGINAL STAMP IN GREEN

REV'D 11-20-01 SMM OK

# Lee Surveying and Mapping Co., Inc.

Land Surveys • Topography • Subdivisions • Construction Layout

117 N. Madriver St.  
Bellefontaine OH 43311



Phone: (937) 593-7335  
Fax: (937) 593-7444

## EVERHARDT 0.114 ACRE TRACT E

Lying in Virginia Military Survey 12276, Stokes Township, Logan County, Ohio.

Being out of Lot 47 of Houser Allotment as recorded in Plat Cabinet A, Slide 357 of the Logan County Records of Plats and all of the Kevin L. Everhardt and Stephanie J. Everhardt 15 feet wide private drive adjoining Lots 47, 48, 50, 51 and 52 as deeded in Official Record 68, Page 325 of the Logan County Records of Deed and described on the Plat of Houser Allotment of the Logan County Records of Plats and being more particularly described as follows:

Beginning at a 5/8 inch square iron rod found on the southeast corner of Lot 52 and on the westerly line of a 25 feet wide private drive.

THENCE, with the west line of the said 25 feet wide private drive, S 22°-17'-30" E, a distance of 15.01 feet to a 5/8 inch square iron rod found.

THENCE, with the southeasterly line of the said 15 feet wide private drive and the northwesterly line of Lot 51, S 60°-09'-25" W, a distance of 61.02 feet to a 5/8 inch square iron rod found.

THENCE, with the easterly line of the said 15 feet wide private drive and the west lines of Lot 50, the following two (2) courses:

S 49°-02'-17" W, a distance of 22.73 feet to a 5/8 inch square iron rod found;

S 25°-53'-38" W, a distance of 32.80 feet to a 3/4 inch iron pipe found.

THENCE, with the east line of the said 15 feet wide private drive and the west line of Lot 48, S 18°-31'-34" W, a distance of 31.30 feet to a 3/4 inch iron pipe found.

THENCE, with the south line of the said 15 feet wide private drive, N 66°-57'-46" W, a distance of 15.05 feet to a 3/4 inch iron pipe found.

THENCE, S 81°-51'-05" W, a distance of 4.90 feet to a 5/8 inch iron rod set.

THENCE, with the west line of Lot 47, N 6°-14'-15" E, a distance of 108.70 feet to a 3/4 inch iron pipe found on the southwest corner of Lot 52.

THENCE, with the south lines of Lot 52, the following two (2) courses:

S 80°-23'-03" E, a distance of 67.88 feet to a 5/8 inch square iron rod found;

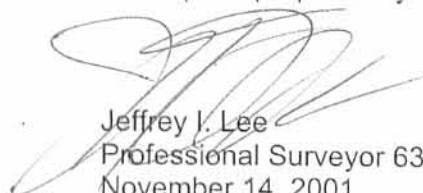
N 60°-09'-25" E, a distance of 33.02 feet to the point of beginning.

Containing 0.114 acre.

Subject to any easements and restrictions of record.

The basis for bearings is the west line of Lot 47 at the south line of Lot 52, being N 6°-14'-15" E, and all other bearings are from angles and distances measured in a field survey by Lee Surveying and Mapping Co., Inc. on November 7, 2001.

Description prepared by:

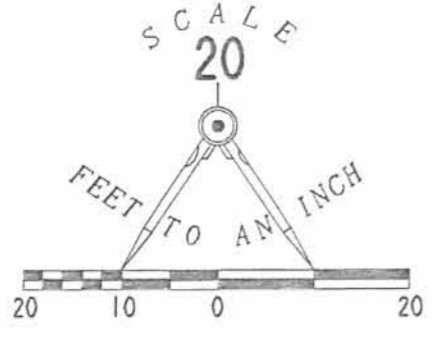
  
Jeffrey J. Lee  
Professional Surveyor 6359  
November 14, 2001



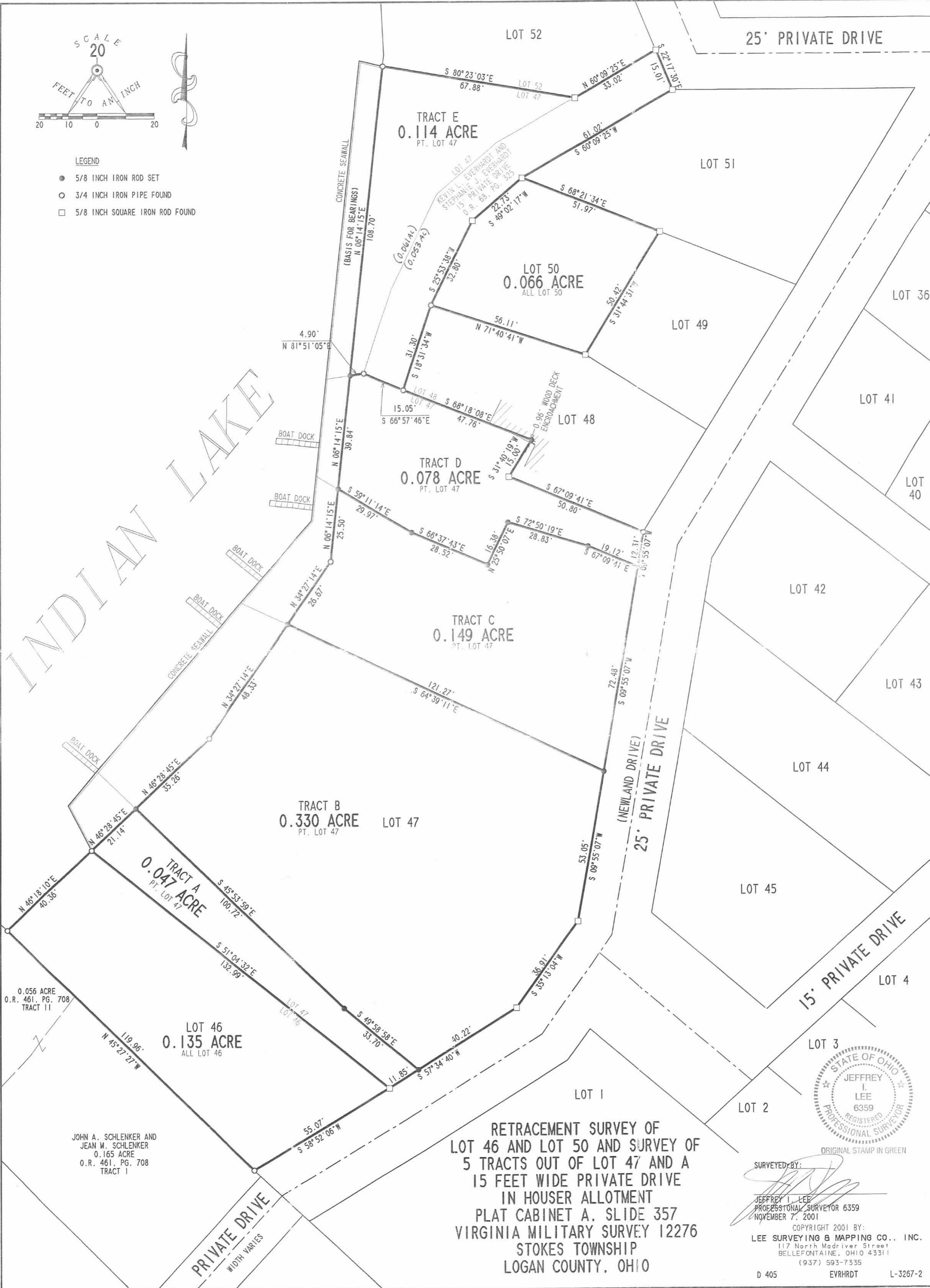
L-3267

1D-5  
INDEXED ON MAP  
9383

ORIGINAL STAMP IN GREEN



- LEGEND
- 5/8 INCH IRON ROD SET
  - 3/4 INCH IRON PIPE FOUND
  - 5/8 INCH SQUARE IRON ROD FOUND



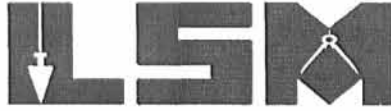
RETRACEMENT SURVEY OF  
LOT 46 AND LOT 50 AND SURVEY OF  
5 TRACTS OUT OF LOT 47 AND A  
15 FEET WIDE PRIVATE DRIVE  
IN HOUSER ALLOTMENT  
PLAT CABINET A, SLIDE 357  
VIRGINIA MILITARY SURVEY 12276  
STOKES TOWNSHIP  
LOGAN COUNTY, OHIO

Received 3-1-02 OK JVA

# Lee Surveying and Mapping Co., Inc.

Land Surveys • Topography • Subdivisions • Construction Layout

117 N. Madriver St.  
Bellefontaine OH 43311



Phone: (937) 593-7335  
Fax: (937) 593-7444

## EVERHARDT 0.007 ACRE TRACT A-1

Lying in Virginia Military Survey 12276, Stokes Township, Logan County, Ohio.

Being the State of Ohio Lakelands west of the Kevin L. Everhardt and Stephanie J. Everhardt 0.047 acre tract (Part of Lot 47 of Houser Allotment, Plat Cabinet A, Slide 357) as deeded and described in Official Record 548, Page 358 of the Logan County Records of Deeds and more particularly described as follows:

Beginning at a 3/4 inch iron pipe found on the most northerly corner of Lot 46 of Houser Allotment and the most westerly corner of the said 0.047 acre tract.

THENCE, with the face of a concrete seawall, N 27°-25'-55" W, a distance of 17.64 feet to an angle in the seawall.

THENCE, with the face of a concrete seawall, N 39°-51'-12" E, a distance of 15.58 feet to a MAG nail set.

THENCE, with the northeasterly line extended of the said 0.047 acre tract, S 45°-53'-59" E, a distance of 18.77 feet to a 5/8 inch iron rod set.

THENCE, with the northwesterly line of the said 0.047 acre tract, S 46°-28'-45" W, a distance of 21.14 feet to the point of beginning.

Containing 0.007 acre.

The basis for bearings is the west line of Lot 47 at the south line of Lot 52, being N 6°-14'-15" E, and all other bearings are from angles and distances measured in a field survey by Lee Surveying and Mapping Co., Inc. on February 26, 2002.

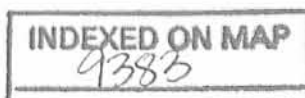


ORIGINAL STAMP IN GREEN

Description prepared by:

A handwritten signature in black ink, appearing to read 'Jeffrey I. Lee'.  
Jeffrey I. Lee  
Professional Surveyor 6359  
February 26, 2002

L-3267



2D-1

Received 2-1-02 OK/gh

# Lee Surveying and Mapping Co., Inc.

Land Surveys • Topography • Subdivisions • Construction Layout



117 N. Madriver St.  
Bellefontaine OH 43311

Phone: (937) 593-7335  
Fax: (937) 593-7444

## EVERHARDT 0.037 ACRE TRACT B-1

Lying in Virginia Military Survey 12276, Stokes Township, Logan County, Ohio.

Being the State of Ohio Lakelands west of the Kevin L. Everhardt and Stephanie J. Everhardt 0.330 acre tract (Part of Lot 47 of Houser Allotment, Plat Cabinet A, Slide 357) as deeded and described in Official Record 548, Page 354 of the Logan County Records of Deeds and more particularly described as follows:

Beginning at a 3/4 inch iron pipe found on the most northerly corner of Lot 46 of Houser Allotment and the most westerly corner of the said Lot 47.

THENCE, with the northwesterly line of Lot 47, N 46°-28'-45" E, a distance of 21.14 feet to a 5/8 inch iron rod set on the most westerly corner of the said 0.330 acre tract at the TRUE POINT OF BEGINNING.

THENCE, with the southwesterly line extended of the said 0.330 acre tract, N 45°-53'-59" W, a distance of 18.77 feet to a MAG nail set at the face of a concrete seawall.

THENCE, with the face of a concrete seawall, N 40°-31'-36" E, a distance of 77.27 feet to a MAG nail set.

THENCE, with the northerly line extended of the said 0.330 acre tract, S 64°-39'-11" E, a distance of 17.90 feet to a 5/8 inch iron rod set.

THENCE, with the westerly lines of the said 0.330 acre tract and Lot 47, the following two (2) courses:

S 34°-27'-14" W, a distance of 48.33 feet to a 3/4 inch iron pipe found;

S 46°-28'-45" W, a distance of 35.26 feet to the point of beginning.

Containing 0.037 acre.

The basis for bearings is the west line of Lot 47 at the south line of Lot 52, being N 6°-14'-15" E, and all other bearings are from angles and distances measured in a field survey by Lee Surveying and Mapping Co., Inc. on February 26, 2002.

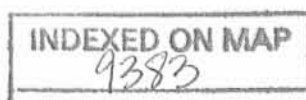
Description prepared by:

Jeffrey I. Lee  
Professional Surveyor 6359  
February 26, 2002



ORIGINAL STAMP IN GREEN

L-3267



2D-2



Received 3-1-02 of JLL

# Lee Surveying and Mapping Co., Inc.

Land Surveys • Topography • Subdivisions • Construction Layout

117 N. Madriver St.  
Bellefontaine OH 43311



Phone: (937) 593-7335  
Fax: (937) 593-7444

## EVERHARDT 0.015 ACRE TRACT C-1

Lying in Virginia Military Survey 12276, Stokes Township, Logan County, Ohio.

Being the State of Ohio Lakelands west of the Kevin L. Everhardt and Stephanie J. Everhardt 0.149 acre tract (Part of Lot 47 of Houser Allotment, Plat Cabinet A, Slide 357) as deeded and described in Official Record 548, Page 356 of the Logan County Records of Deeds and more particularly described as follows:

Beginning at a 3/4 inch iron pipe found on the northwest corner of Lot 47 and the southwest corner of Lot 52.

THENCE, with the west line of Lot 47, S 6°-14'-15" W, a distance of 148.54 feet to a 5/8 inch iron rod set at the TRUE POINT OF BEGINNING.

THENCE, with the west lines of Lot 47 and the said 0.149 acre tract, the following two (2) courses:

S 6°-14'-15" W, a distance of 25.50 feet to a 3/4 inch iron pipe found;

S 34°-27'-14" W, a distance of 26.67 feet to a 5/8 inch iron rod set.

THENCE, with the south line extended of the said 0.149 acre tract, N 64°-39'-11" W, a distance of 17.90 feet to a MAG nail set.

THENCE, with the face of a concrete seawall, N 40°-39'-50" E, a distance of 37.85 feet to an angle in the seawall.

THENCE, with the face of a concrete seawall, N 6°-09'-53" E, a distance of 15.64 feet to a MAG nail set.

THENCE, with the north line extended of the said 0.149 acre tract, S 59°-11'-14" E, a distance of 8.95 feet to the point of beginning.

Containing 0.015 acre.

The basis for bearings is the west line of Lot 47 at the south line of Lot 52, being N 6°-14'-15" E, and all other bearings are from angles and distances measured in a field survey by Lee Surveying and Mapping Co., Inc. on February 26, 2002.

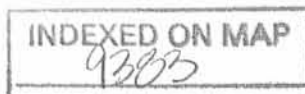
Description prepared by:



ORIGINAL STAMP IN GREEN

A handwritten signature in black ink, appearing to read 'J. Lee'.  
Jeffrey I. Lee  
Professional Surveyor 6359  
February 26, 2002

L-3267



2D-3

Received 2-1-02 OK JGL

# Lee Surveying and Mapping Co., Inc.

Land Surveys • Topography • Subdivisions • Construction Layout

117 N. Madriver St.  
Bellefontaine OH 43311



Phone: (937) 593-7335  
Fax: (937) 593-7444

## EVERHARDT 0.007 ACRE TRACT D-1

Lying in Virginia Military Survey 12276, Stokes Township, Logan County, Ohio.

Being the State of Ohio Lakelands west of the Kevin L. Everhardt and Stephanie J. Everhardt 0.078 acre tract (Part of Lot 47 of Houser Allotment, Plat Cabinet A, Slide 357) as deeded and described in Official Record 548, Page 362 of the Logan County Records of Deeds and more particularly described as follows:

Beginning at a 3/4 inch iron pipe found on the northwest corner of Lot 47 and the southwest corner of Lot 52.

THENCE, with the west line of Lot 47, S 6°-14'-15" W, a distance of 108.70 feet to a 5/8 inch iron rod set at the TRUE POINT OF BEGINNING.

THENCE, with the west line of the said 0.078 acre tract and Lot 47, S 6°-14'-15" W, a distance of 39.84 feet to a 5/8 inch iron rod set.

THENCE, with the south line extended of the said 0.078 acre tract, N 59°-11'-14" W, a distance of 8.95 feet to a MAG nail set on the face of a concrete seawall.

THENCE, with the face of a concrete seawall, N 6°-02'-43" E, a distance of 34.00 feet to a MAG nail set.

THENCE, with the north line extended of the said 0.078 acre tract, N 81°-51'-05" E, a distance of 8.52 feet to the point of beginning.

Containing 0.007 acre.

The basis for bearings is the west line of Lot 47 at the south line of Lot 52, being N 6°-14'-15" E, and all other bearings are from angles and distances measured in a field survey by Lee Surveying and Mapping Co., Inc. on February 26, 2002.

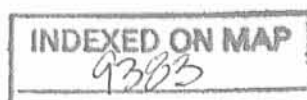
Description prepared by:



ORIGINAL STAMP IN GREEN

Jeffrey I. Lee  
Professional Surveyor 6359  
February 26, 2002

L-3267



2D-4

Received 3-1-02 OK gch

# Lee Surveying and Mapping Co., Inc.

Land Surveys • Topography • Subdivisions • Construction Layout

117 N. Madriver St.  
Bellefontaine OH 43311



Phone: (937) 593-7335  
Fax: (937) 593-7444

## EVERHARDT 0.021 ACRE TRACT E-1

Lying in Virginia Military Survey 12276, Stokes Township, Logan County, Ohio.

Being the State of Ohio Lakelands west of the Kevin L. Everhardt and Stephanie J. Everhardt 0.114 acre tract (Part of Lot 47 of Houser Allotment, Plat Cabinet A, Slide 357) as deeded and described in Official Record 548, Page 364 of the Logan County Records of Deeds and more particularly described as follows:

Beginning at a 3/4 inch iron pipe found on the northwest corner of Lot 47 and the southwest corner of Lot 52.

THENCE, with the west line of the said 0.114 acre tract and Lot 47, S 6°-14'-15" W, a distance of 108.70 feet to a 5/8 inch iron rod set.

THENCE, with the south line extended of the said 0.114 acre tract, S 81°-51'-05" W, a distance of 8.52 feet to a MAG nail set on the face of a concrete seawall.

THENCE, with the face of a concrete seawall, N 6°-07'-10" E, a distance of 111.89 feet to an angle in the seawall.

THENCE, with the face of a concrete seawall, S 76°-33'-25" E, a distance of 8.56 feet to the point of beginning.

Containing 0.021 acre.

The basis for bearings is the west line of Lot 47 at the south line of Lot 52, being N 6°-14'-15" E, and all other bearings are from angles and distances measured in a field survey by Lee Surveying and Mapping Co., Inc. on February 26, 2002.

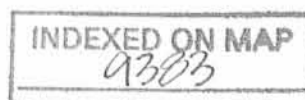
Description prepared by:



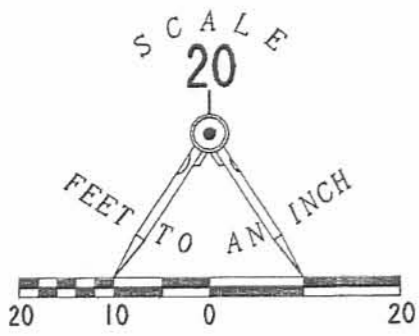
ORIGINAL STAMP IN GREEN

Jeffrey I. Lee  
Professional Surveyor 6359  
February 26, 2002

L-3267

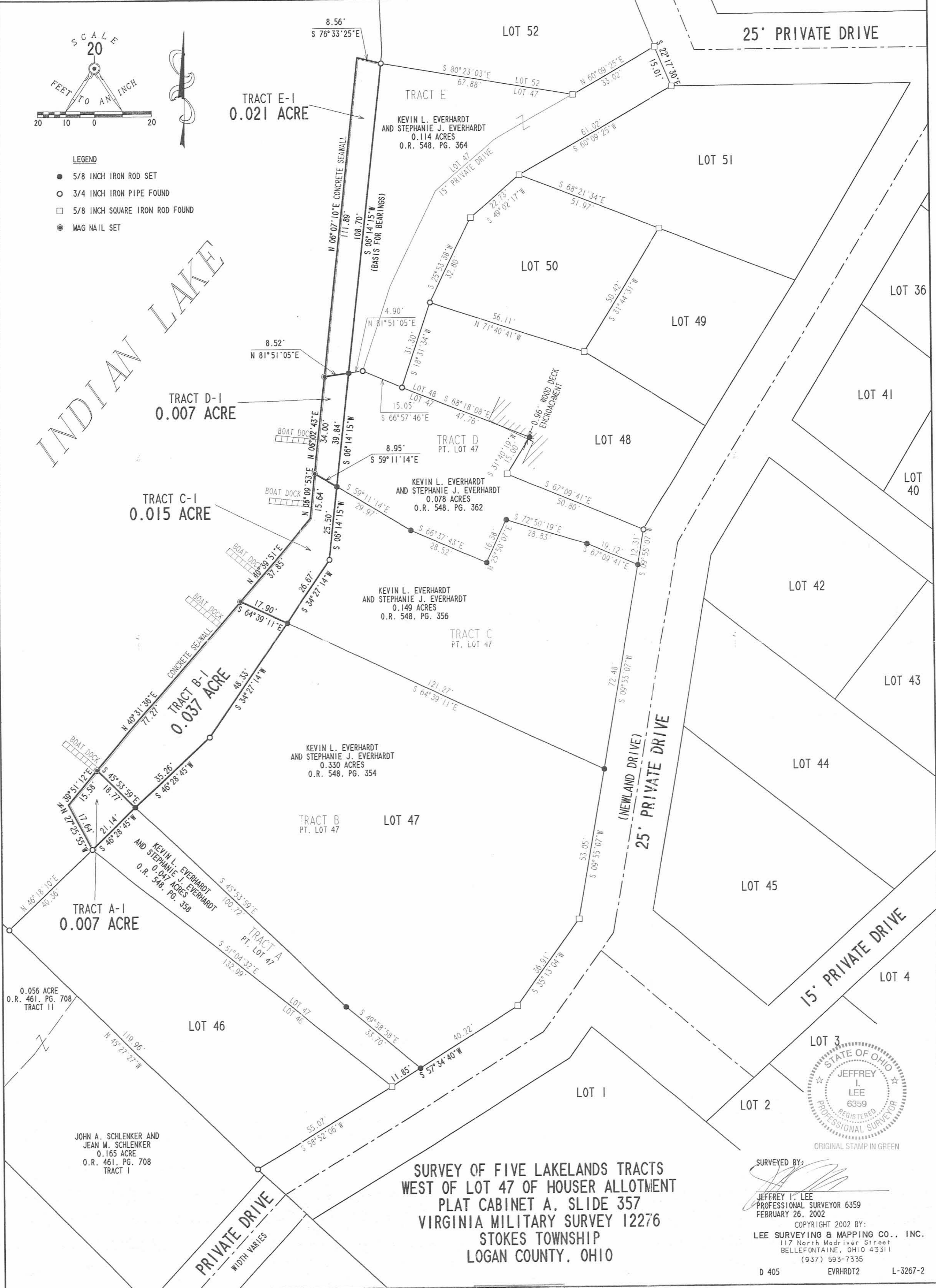


20-5



- LEGEND
- 5/8 INCH IRON ROD SET
  - 3/4 INCH IRON PIPE FOUND
  - 5/8 INCH SQUARE IRON ROD FOUND
  - ⊙ MAG NAIL SET

INDIAN LAKE



SURVEY OF FIVE LAKELANDS TRACTS  
WEST OF LOT 47 OF HOUSER ALLOTMENT  
PLAT CABINET A, SLIDE 357  
VIRGINIA MILITARY SURVEY 12276  
STOKES TOWNSHIP  
LOGAN COUNTY, OHIO

SURVEYED BY:  
JEFFREY L. LEE  
PROFESSIONAL SURVEYOR 6359  
FEBRUARY 26, 2002  
COPYRIGHT 2002 BY:  
LEE SURVEYING & MAPPING CO., INC.  
117 North Madriver Street  
BELLEFONTAINE, OHIO 43311  
(937) 593-7335



APPROVED 8-25-17

# Lee Surveying and Mapping Co., Inc.

Land Surveys • Topography • Subdivisions • Construction Layout



117 N. Madriver St.  
Bellevue OH 43111

Phone: (937) 593-7335  
Fax: (937) 593-7444  
surveys@lsminc.us

## AMBOS 0.022 ACRE

Lying in Virginia Military Survey 12276, Stokes Township, Logan County, Ohio.

Being out of the James Ambos and Cinda R. Ambos, Trustees, 0.114 acre tract (part of Lot 47, Houser Allotment, recorded in Plat Cabinet A, Slide 357) and 0.021 acre tract as deeded and described in Official Record 1124, Page 91, Parcel II and Parcel III of the Logan County Records of Deeds and being more particularly described as follows:

Beginning on a 3/4 inch iron pipe found on the northwest corner of Lot 48 of Houser Allotment.

THENCE, with the westerly line of Lot 48, S 18°-31'-26"W, a distance of 31.30 feet to a 5/8 inch iron rod set.

THENCE, with the northerly line of the Kevin L. Everhardt 0.078 acre part of Lot 47 (O.R. 548, Pg. 362), N 67°-37'-38"W, a distance of 15.05 feet to a 3/4 inch iron pipe found.

THENCE, with the northerly lines of the said 0.078 acre tract and the Kevin L. Everhardt 0.007 acre tract (O.R. 837, Pg. 905, Tract D), S 82°-03'-40"W, a distance of 13.77 feet to a MAG nail found on the concrete seawall, passing a 5/8 inch iron rod found at 4.91 feet.

THENCE, with the concrete seawall, N 06°-07'-10"E, a distance of 34.05 feet to a point.

THENCE, S 76°-42'-25"E, a distance of 34.80 feet to the point of beginning, passing a 5/8 inch iron rod set at 2.00 feet.

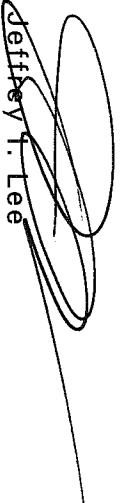
Containing 0.022 acre. There is 0.006 acre within Lot 47 and 0.016 acre within Virginia Military Survey 12276 (including private drive).

This parcel is to be attached to an adjoining tract of land and is not to be used as a separate and independent parcel.

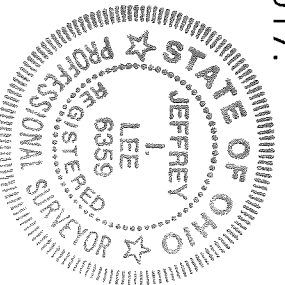
Property is subject to any and all previous easements and rights-of-way of record.

The basis for bearings is the westerly line of Lot 48, being S 18°-31'-26"W, and all other bearings are from angles and distances measured in a field survey by Lee Surveying and Mapping Co., Inc. on August 15, 2017.

Description prepared by:

  
Jeffrey T. Lee

Professional Surveyor 6359  
August 16, 2017



ORIGINAL STAMP IN GREEN

56110717

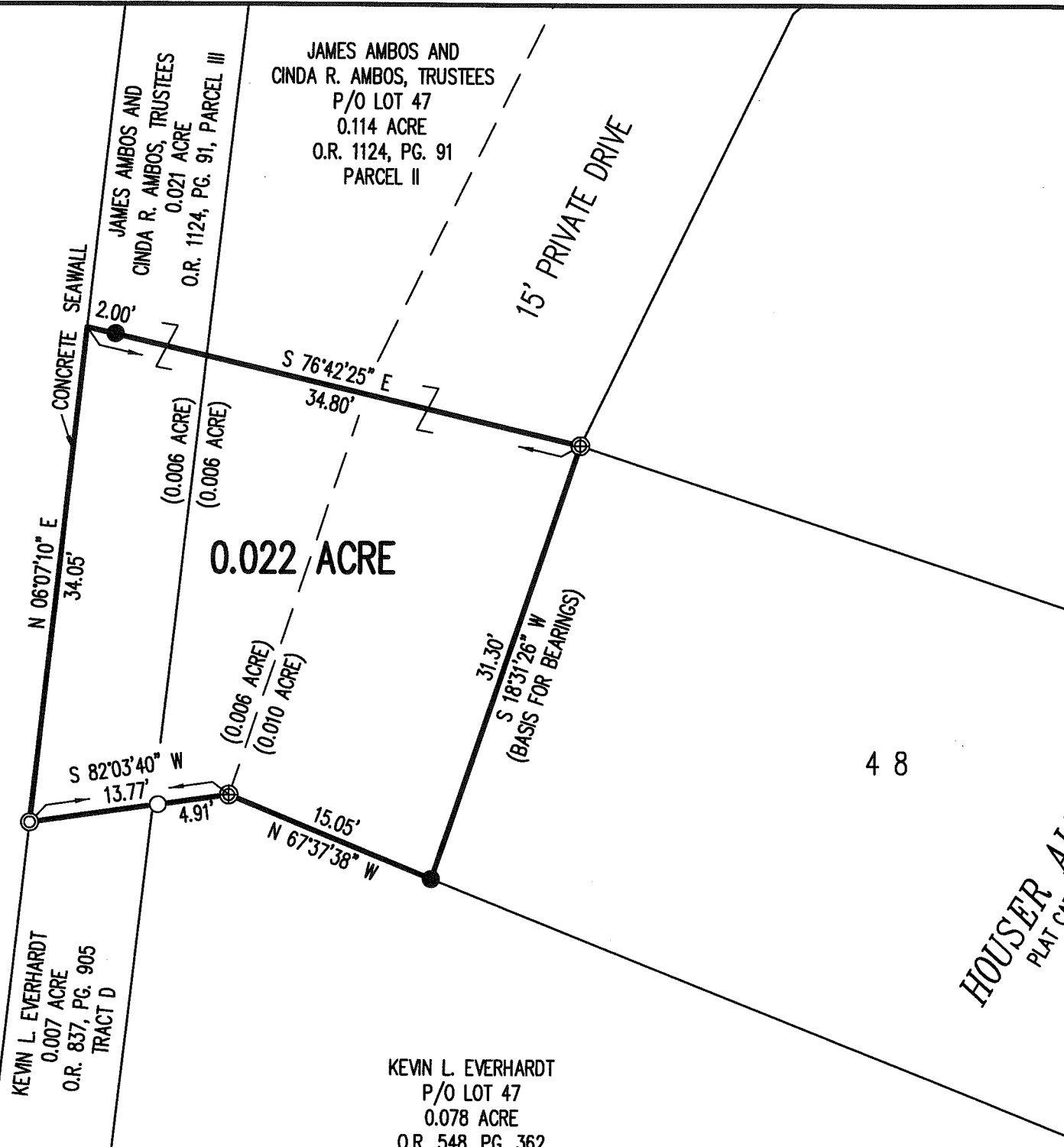
INDEXED ON MAP  
9385 3



APPROVED

8-25-17

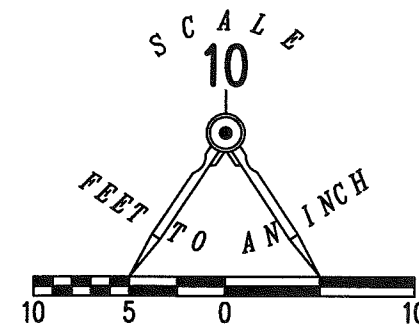
INDIAN LAKE



0.022 ACRE

HOUSER ALLOTMENT  
PLAT CABINET A, SLIDE 357

- LEGEND:
- ⊕ 3/4 INCH IRON PIPE FOUND
  - ⊙ MAG NAIL FOUND
  - 5/8 INCH IRON ROD FOUND
  - 5/8 INCH IRON ROD SET WITH PLASTIC I.D. CAP STAMPED "LEE SURVEYING INC"



SURVEY OF 0.022 ACRE OUT OF THE  
 JAMES AMBOS AND  
 CINDA R. AMBOS, TRUSTEES  
 0.114 ACRE TRACT  
 PART OF LOT 47  
 HOUSER ALLOTMENT  
 PLAT CABINET A, SLIDE 357  
 AND 0.021 ACRE TRACT  
 OFFICIAL RECORD 1124, PAGE 91  
 PARCEL II AND PARCEL III  
 VIRGINIA MILITARY SURVEY 12276  
 STOKES TOWNSHIP  
 LOGAN COUNTY, OHIO

SURVEYED BY:

JEFFREY I. LEE  
 PROFESSIONAL SURVEYOR 6359  
 AUGUST 15, 2017



ORIGINAL STAMP IN GREEN

COPYRIGHT 2017 BY:  
**LEE SURVEYING & MAPPING CO., INC.**  
 117 North Madriver Street  
 BELLEFONTAINE, OHIO 43311  
 (937) 593-7335  
 WWW.LSMINC.US  
 surveys@lsminc.us

KSS D0717 56110717 L-5611-3

THIS SURVEY WAS PREPARED IN THE ABSENCE OF  
 A COMPLETE AND ACCURATE TITLE SEARCH AND  
 DOES NOT GUARANTEE TITLE.

2 WORKING DAYS



**BEFORE YOU DIG**

CALL TOLL FREE **800-362-2764**

OHIO UTILITIES PROTECTION SERVICE

NOTE:

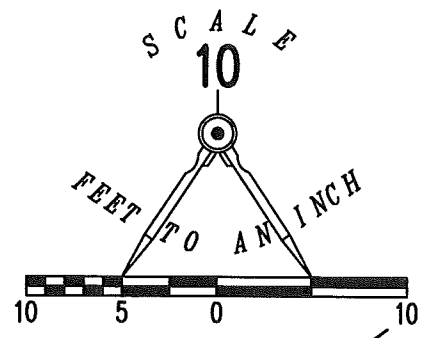
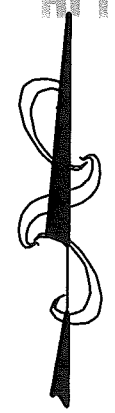
THIS PARCEL IS TO BE ATTACHED TO AN ADJOINING TRACT  
 OF LAND AND IS NOT TO BE USED AS A SEPARATE AND  
 INDEPENDENT PARCEL.

INDEXED ON MAP

9383 3

APPROVED

11-27-17



- LEGEND:
- 1/2 INCH IRON BAR FOUND
  - MAG NAIL SET

JAMES AMBROS  
0.114 ACRE  
O.R. 1124, PG. 91  
PARCEL II

25' PRIVATE DRIVE

15' PRIVATE DRIVE

25' PRIVATE DRIVE  
(NEWLAND DRIVE)

N 83°30'52" E  
84.60'

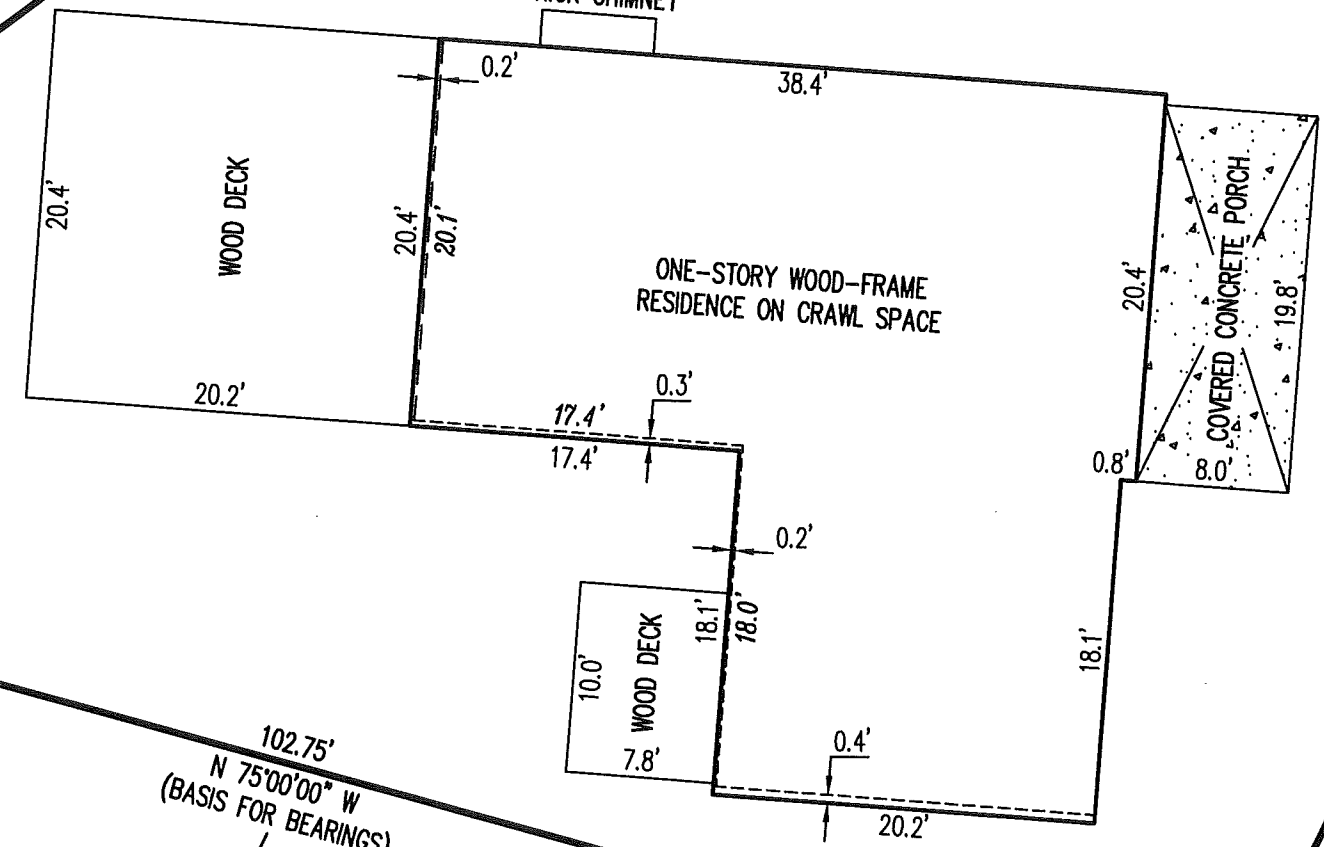
N 53°29'28" E  
61.05'

80.00'  
S 25°03'12" W

102.75'  
N 75°00'00" W  
(BASIS FOR BEARINGS)

WELL 51

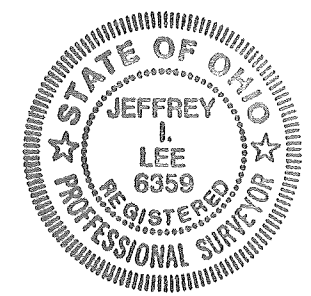
5.3' X 6'  
BRICK CHIMNEY



RETRACEMENT SURVEY OF  
LOT 51  
HOUSER ALLOTMENT  
PLAT CABINET A, SLIDE 357  
STOKES TOWNSHIP  
LOGAN COUNTY, OHIO

SURVEYED BY:

*Jeffrey I. Lee*  
JEFFREY I. LEE  
PROFESSIONAL SURVEYOR 6359  
NOVEMBER 7, 2017

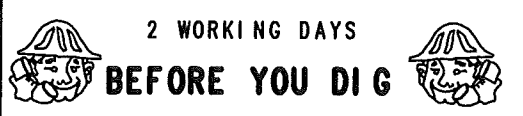


COPYRIGHT 2017 BY:  
**LEE SURVEYING & MAPPING CO., INC.**  
117 North Madriver Street  
BELLEFONTAINE, OHIO 43111  
(937) 593-7335  
WWW.LSMINC.US  
surveys@lsminc.us  
KSS D1117 63091117 L-6309-3

**BUILDING DIMENSION NOTE:**  
17.1' FACE OF SIDING  
17.1' BLOCK FOUNDATION (WHERE ACCESSIBLE)

50

THIS SURVEY WAS PREPARED IN THE ABSENCE OF  
A COMPLETE AND ACCURATE TITLE SEARCH AND  
DOES NOT GUARANTEE TITLE.



2 WORKING DAYS  
**BEFORE YOU DIG**  
CALL TOLL FREE **800-362-2764**  
OHIO UTILITIES PROTECTION SERVICE

49

ORIGINAL STAMP IN GREEN

INDEXED ON MAP  
9303 4