

FB 709

C.H. No. 225

STA.

0+00 Red Stone Fd.

5+00 Set R.R. SPIKE (S-31-84)

10+00 Set R.R. SPIKE

15+00 Set R.R. SPIKE

20+00 Set R.R. SPIKE

23+40.24 (EDM) Stone & C.H. No. 23

P.K. NAIL STRADDLES ON BOTH STONES.

1852 - Sec. 0.00 TO 0.44

COMMISSIONERS JOURNAL 10 PAGE 103

50' RIGHT OF WAY

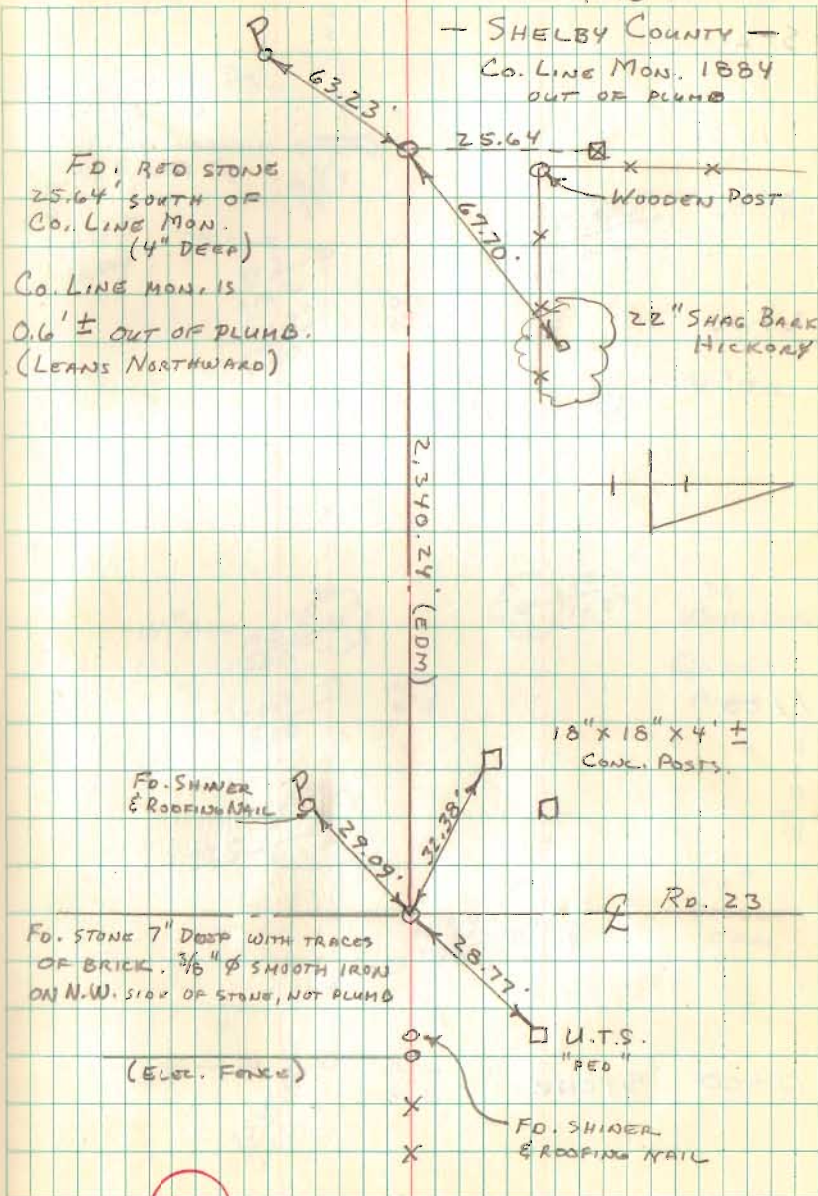
REF: F.B. 512 PAGE 58

F.B. 300X PAGES 28-31

BOOK C PAGE 118

T. C. NICHOLS
C. DILL

2-21-84
37° SUNNY 20
T-16



8981

FB 709

Topo

Rd. 225

STA.

2+00

1+00

0+00 STONE

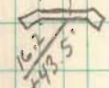
T. C. NICHOLS
C. DILL
J. GOODWIN5-31-1984
P.M. 21

13.5' GRAVEL DR.

2+58.5

CONC. HORIZONTAL
W. FLOWER BOX+21.5
SKEW

8" CMP



$$\begin{array}{r} 21.3 \\ +16.2 \\ \hline 20.7 \\ +00 \\ \hline \end{array}$$
7.4
6.828" OAK
28.6'
+1630" OAK
28.5'
+75

14" ASH

$$\begin{array}{r} 19.5 \\ +48 \\ \hline 20.3 \\ +00 \\ \hline \end{array}$$
7.2
6.336" WHITE OAK
28.3'
+23QUERCUS
ALBA

WOODS

22.0

$$\begin{array}{r} 28.4 \\ +38.7 \\ \hline \end{array}$$
30" DOUBLE
OAK7.3
1
7.3
$$\begin{array}{r} 25.64 \\ +00 \\ \hline \end{array}$$

FB 709

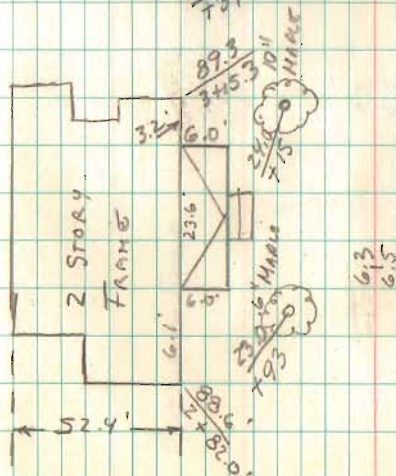
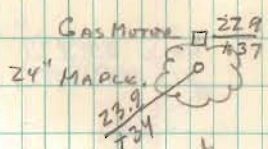
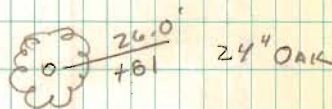
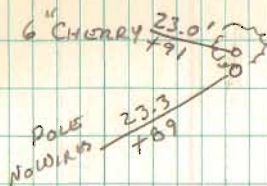
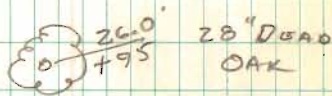
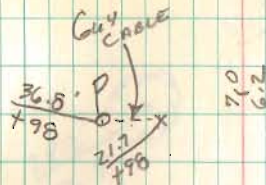
Topo Cont.

STA.

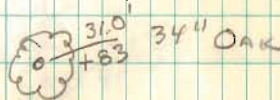
4+00

3+00

22



6.3
6.5



FB 709

Topo CONT

STA
7+00

6+00

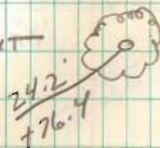
CALL D.R. E.L.
513-492-4121

5+00 TRACK SPIKE

23

A-3

18" WALNUT



8.5
5.0

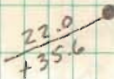
P 14.5'
+76.4

2.8
4.6

CULTIVATED FIELD

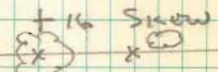
"WARNING
Gas Pipeline"

3" P PIPE



2.2
5.7

31.9'
+15.0'



Cultivated Field

P 15.4'
+22.8'
C O
P 15.4'
+15

34.8'
4+20
U.T.S.
"P20"

36" OAK

FB 709

TOPG CONT.

STA

STRONG SMELL
OF GAS.

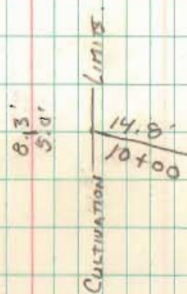
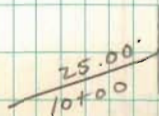
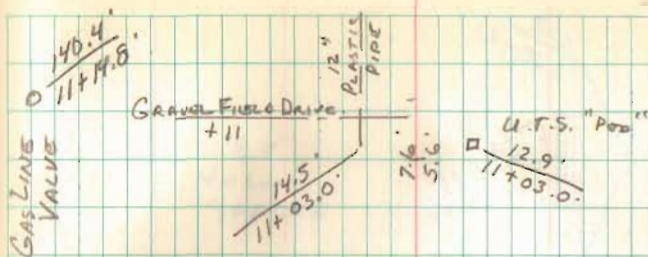
11+00

10+00 TRACK SPIKE

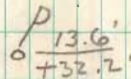
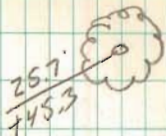
9+00

8+00

24

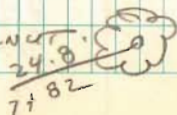


18" WALNUT



8.7
4.2

16" WALNUT



8.8
4.7

FB 709

TOPO CONT.

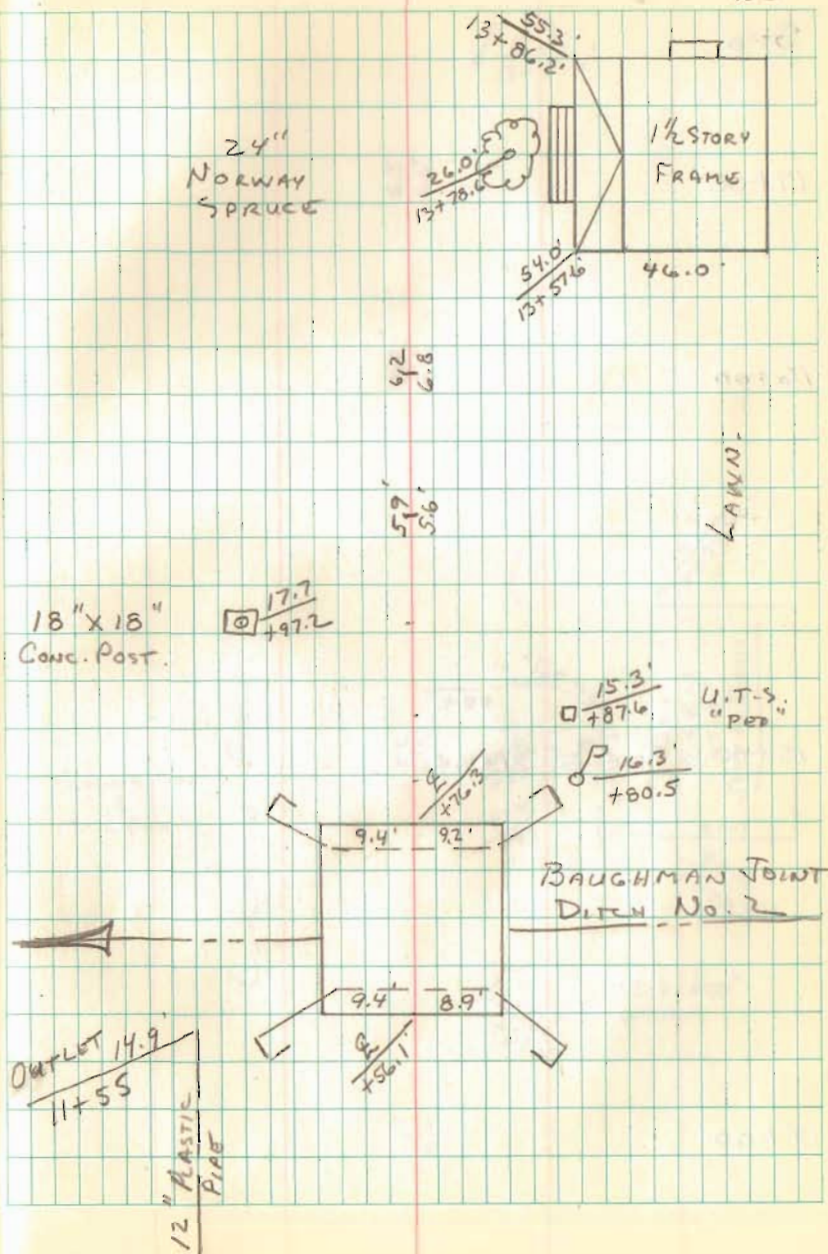
STA

13+00

12+00

BRG. 225 - 0.22
 POSTED - 65 %
 STEEL BEAM
 CONC. ABUT.

25



FB 709

Topo Cont.

STA.

17+00

16+00

15+00 TRACK SPIKE

14+00

26

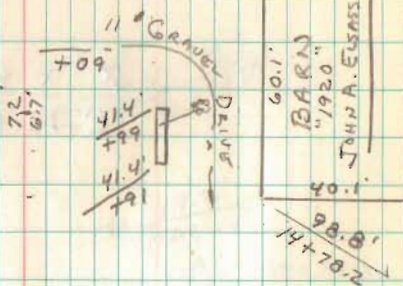
$\frac{P 17.2}{17+31.6}$

6.5'
6.6'

7.3'
6.6'

Flower Box
&
Mail box

CULTIVATED FIELD.



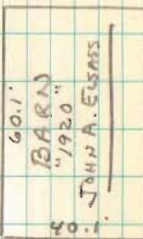
7.2'
6.7'

$\frac{17.7}{17+37.0}$

U.T.S "P80"
ON SIDE.

6.9'
6.2'

$\frac{102.3}{15+37.7}$



60.1'
40.1'
 $\frac{98.8}{14+70.2}$

FB 709

Topo CONT.

27

STA.
23+00

22+00

21+00

20+00 TRACK SPLICE

3' X 40' LINCOLN FOOT
C.M.P. (10-1-1984)

19+00

18+00

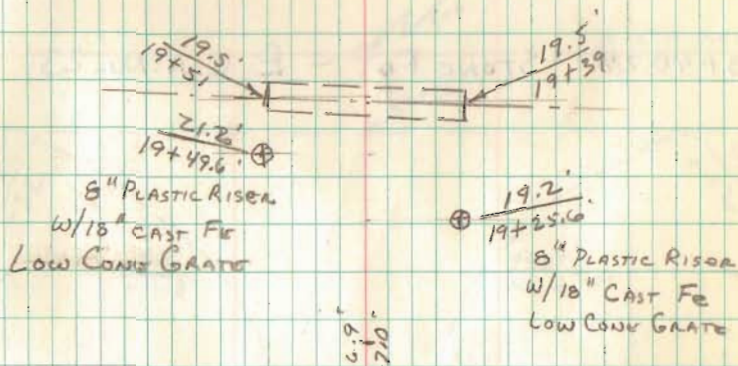
2.3
6.3

8.7
6.0

7.7
5.5

7.4
6.4

P
17.3
+28.1



6.9
2.0

6.7
6.8

FB 709 TOPO CONT.

STA.

23+40.24 STONE FO. - E C.H. No. 23

23+00

28

