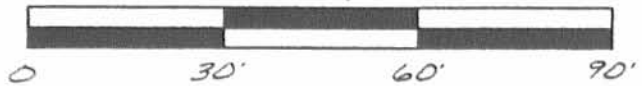


- LEGEND:
- △ = P.B SPIKE FOUND
  - = CAP & NAIL SET
  - = 5/8 INCH IRON BAR SET

SCALE: 1" = 30'



SURVEY OF LOTS  
 1964, 1965, 1939,  
 1940 & 1941 'N  
 CHIPPEWA PARK NO. 3, STOKES  
 TOWNSHIP, LOGAN COUNTY OH

MAY 19, 1993



INDEXED ON MAP  
 8804

Leslie H. Geeslin  
 LESLIE H. GEESLIN  
 EUSHS PLVANIA, OH  
 (513) 468-2795

Revised 3-16-00 OKGCH

# Lee Surveying and Mapping Co., Inc.

Land Surveys • Topography • Subdivisions • Construction Layout

117 N. Madriver St.  
Bellefontaine OH 43311



Phone: (937) 593-7335  
Fax: (937) 593-7444

## PART OF LOTS 1934, 1935 AND 1936 CHIPPEWA PARK NO. 3

Lying in Stokes Township, Logan County, Ohio.

Being part of Lots 1934, 1935 and 1936 of Chippewa Park No. 3 as Filed in Plat Cabinet A, Slide 235 of the Logan County Records of Plats and being more particularly described as follows:

Being 72.17 feet off of the east end of the said Lots 1934, 1935 and 1936.

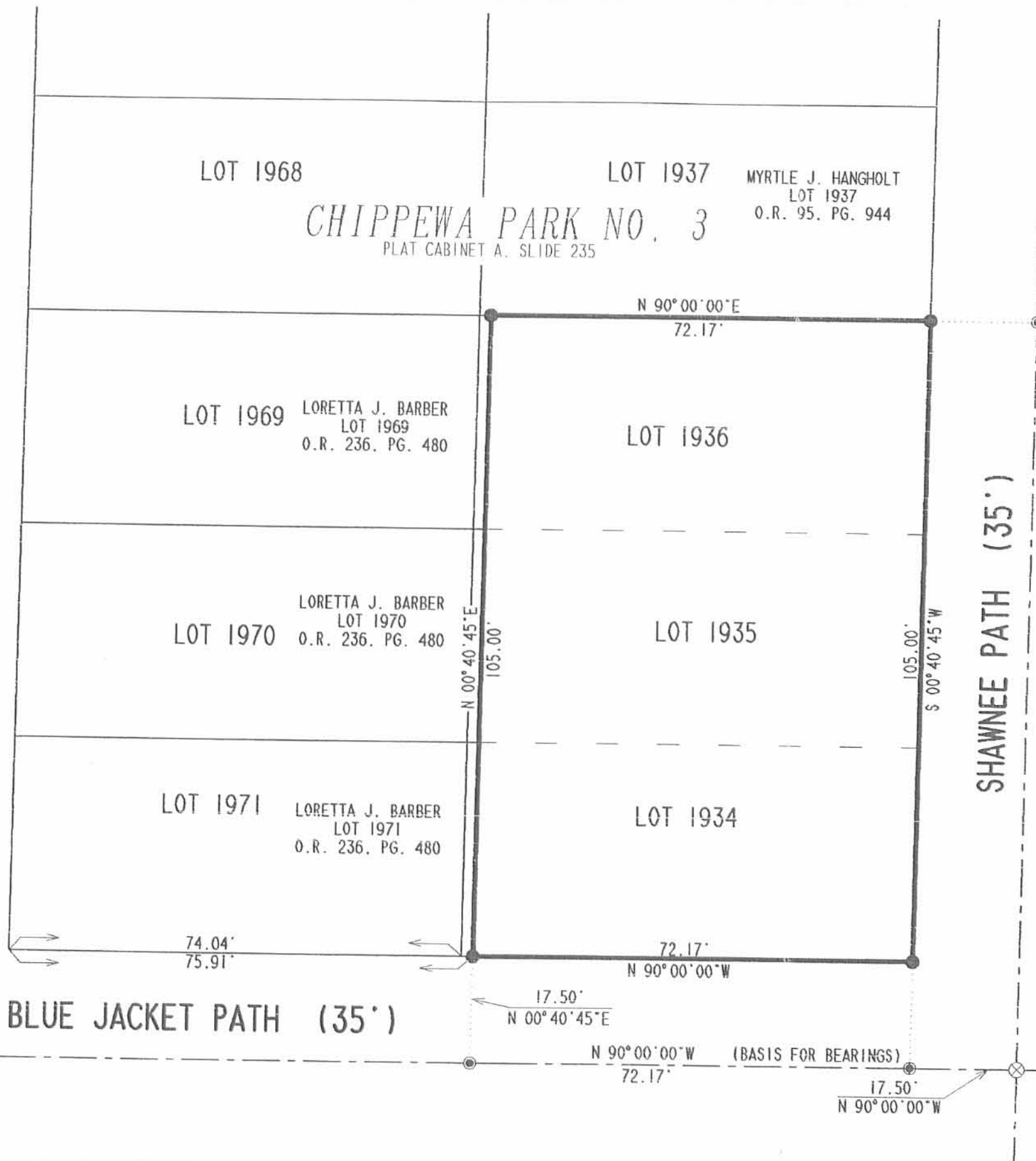
Description prepared by:

Jeffrey I. Lee  
Professional Surveyor 6359  
March 14, 2000



ORIGINAL STAMP IN GREEN  
L-2910

8804 2D



CHIPPEWA PARK NO. 3  
PLAT CABINET A. SLIDE 235

MYRTLE J. HANGHOLT  
LOT 1937  
O.R. 95, PG. 944

LOT 1969 LORETTA J. BARBER  
LOT 1969  
O.R. 236, PG. 480

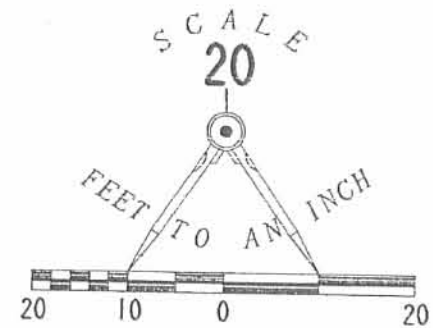
LOT 1970 LORETTA J. BARBER  
LOT 1970  
O.R. 236, PG. 480

LOT 1971 LORETTA J. BARBER  
LOT 1971  
O.R. 236, PG. 480

KIOWA PATH (35')

SHAWNEE PATH (35')

BLUE JACKET PATH (35')



LEGEND

- 5/8 INCH IRON ROD SET
- ⊙ MAG NAIL SET
- ⊗ RAILROAD SPIKE FOUND

RETRACEMENT SURVEY OF  
LOTS 1934, 1935 AND 1936  
OF CHIPPEWA PARK NO. 3  
PLAT CABINET A. SLIDE 235  
STOKES TOWNSHIP  
LOGAN COUNTY, OHIO



ORIGINAL STAMP IN GREEN

SURVEYED BY

JEFFREY I. LEE  
PROFESSIONAL SURVEYOR 6359  
MARCH 10, 2000

COPYRIGHT 2000 BY:  
LEE SURVEYING & MAPPING CO., INC.  
117 North Madriver Street  
BELLEFONTAINE, OHIO 43311  
(937) 593-7335

D-370 COBLENTZ

L-2910-3

2 WORKING DAYS  
BEFORE YOU DIG  
CALL TOLL FREE 800-362-2764  
OHIO UTILITIES PROTECTION SERVICE.

0004 2P