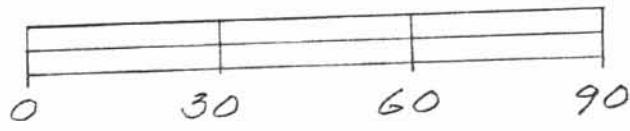


LEGEND:
 A = 5/8" IRON BAR FOUND
 B = 5/8" IRON BAR SET

SURVEY OF LOTS 12 & 13 IN SEMINOLE SHORES SUBDIVISION NO 1, STOKES TOWNSHIP, LOGAN COUNTY, OHIO FOR JAMES DICKEY.

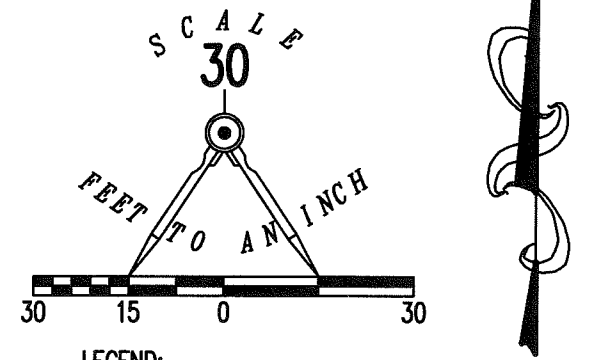
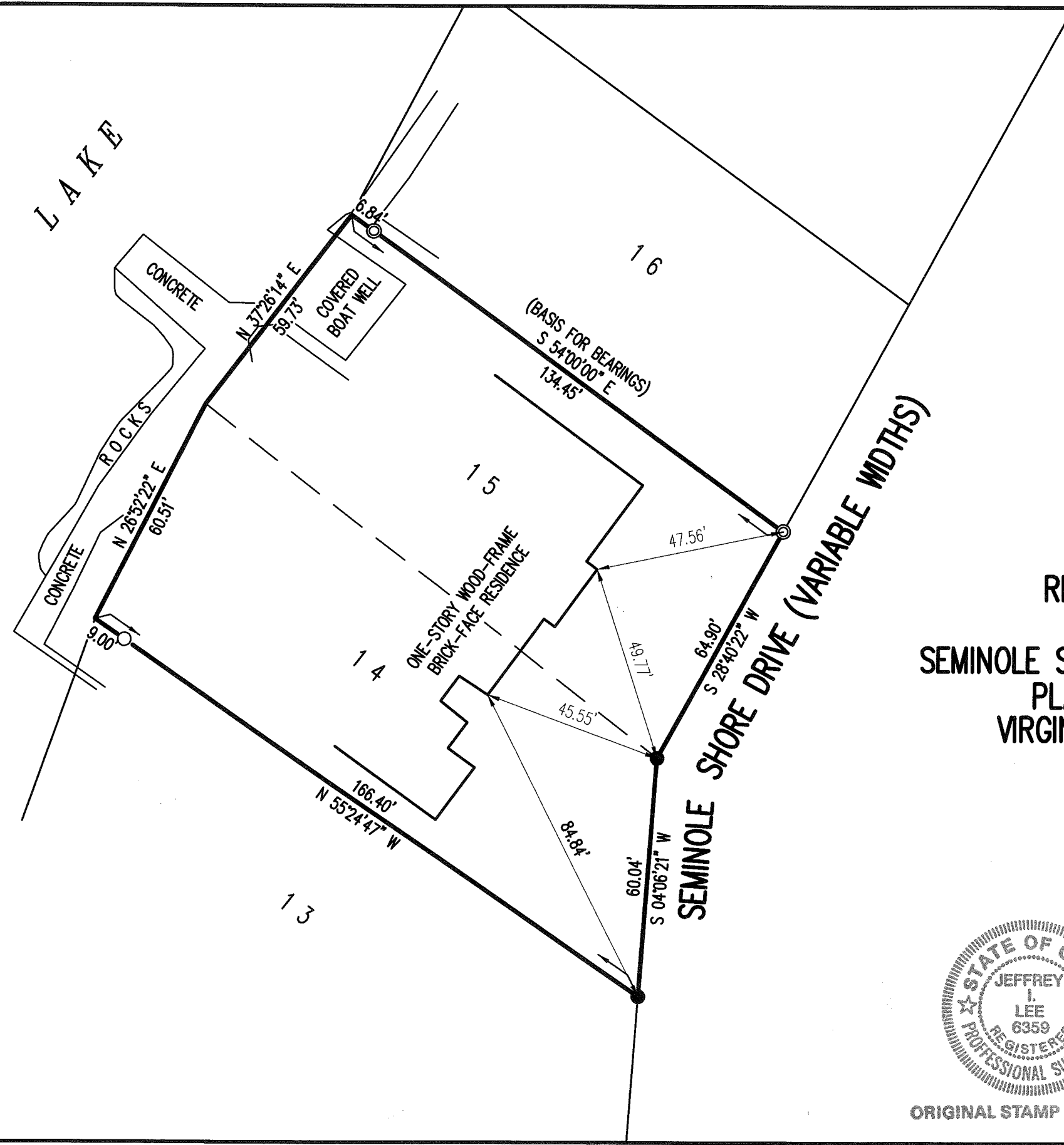
APRIL 30, 1993
 SCALE: 1" = 30'



1P
 INDEXED ON MAP
 8797

Leslie H. Geeslin
 LESLIE H. GEESLIN
 RUSHSVLVANIA, OHIO
 PH 513-468-2793

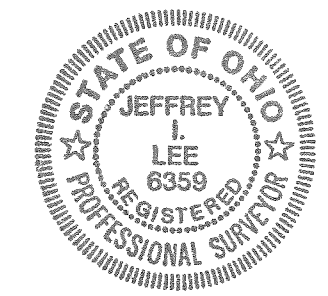
INDIAN LAKE



RETRACEMENT SURVEY OF
 LOT 14 AND LOT 15
 SEMINOLE SHORES SUBDIVISION NUMBER ONE
 PLAT CABINET A, SLIDE 251
 VIRGINIA MILITARY SURVEY 12276
 STOKES TOWNSHIP
 LOGAN COUNTY, OHIO

SURVEYED BY:

JEFFREY I. LEE
 PROFESSIONAL SURVEYOR 6359
 AUGUST 14, 2017



ORIGINAL STAMP IN GREEN

COPYRIGHT 2017 BY:
LEE SURVEYING & MAPPING CO., INC.
 117 North Madriver Street
 BELLEFONTAINE, OHIO 43311
 (937) 593-7335
 WWW.LSMINC.US
 surveys@lsminc.us
 KSS D0817 62850817 L-6285-3

THIS SURVEY WAS PREPARED IN THE ABSENCE OF
 A COMPLETE AND ACCURATE TITLE SEARCH AND
 DOES NOT GUARANTEE TITLE.

2 WORKING DAYS
BEFORE YOU DIG
 CALL TOLL FREE **800-362-2764**
 OHIO UTILITIES PROTECTION SERVICE

INDEXED ON MAP
 8797 2

10-31-2024



APPROVED



INNOVATIVE IDEAS
EXCEPTIONAL DESIGN
UNMATCHED CLIENT SERVICE

**STATE OF OHIO INDIAN LAKE RESERVOIR LANDS
0.032 ACRE**

Situate in the State of Ohio, Logan County, Stokes Township and lying in Virginia Military Survey 12276, and being out of the State of Ohio Indian Lake Reservoir Lands, (all records referenced herein refer to the Logan County Records of Deeds) and being more particularly described as follows:

BEGINNING on a point at the westerly corner of Lot 12 of Seminole Shores Subdivision No. 1 (Plat Cabinet A, Slide 251), referenced by a 5/8 inch rebar found bearing S 51° 17' 43" E, a distance of 16.17 feet, being a corner common to Lot 12 as conveyed to Kara Sollmann by deed of record in Official Record 1418, Page 4633, Tract I and that 0.118 acre part of Lot E.11 and conveyed to John Albert Conley aka John A. Conley et al by deed of record in Official Record 1412, Page 3524, Tract II;

Thence North 51° 17' 43" West a distance of 1.53 feet, with said common line extended to a point on the rocky shore line of Indian Lake;

Thence with the rock shore line of Indian Lake, the following courses and distances:

1. North 13° 23' 46" W a distance of 3.63 feet to a point;
2. North 21° 40' 16" East a distance of 11.34 feet to a point;
3. North 41° 19' 26" East a distance of 20.13 feet to a point;
4. North 39° 12' 03" East a distance of 28.69 feet to a point, referenced by a 5/8 inch rebar set bearing South 25° 07' 23" East a distance of 13.61 feet;
5. North 03° 34' 49" East a distance of 10.10 feet to a point;
6. North 32° 14' 16" West a distance of 18.67 feet to a point;
7. North 19° 00' 53" East a distance of 8.53 feet to a point;

INDEXED ON MAP
0797



INNOVATIVE IDEAS
EXCEPTIONAL DESIGN
UNMATCHED CLIENT SERVICE

8. North 67° 57' 00" East a distance of 6.21 feet to a point;
9. South 53° 58' 40" East a distance of 12.15 feet to a point;
10. South 42° 07' 37" East a distance of 5.09 feet to a point on the face of a concrete seawall, referenced by a 5/8 inch rebar set bearing South 10° 02' 39" West a distance of 38.26 feet;

Thence, with the face of the concrete seawall, the following courses and distances:

1. North 39° 15' 13" East a distance of 3.84 feet to a point;
2. South 51° 22' 42" East a distance of 8.23 feet to a point on the edge of a concrete boat well;

Thence North 37° 13' 10" East a distance of 27.38 feet, across the boat well and with the edge of concrete seawall, to a point;

Thence South 49° 07' 48" East a distance of 5.72 feet, to a point on the corner common to Lots 13 and 14 of said subdivision, referenced by a 5/8 inch rebar found bearing South 49° 07' 48" East a distance of 9.10 feet;

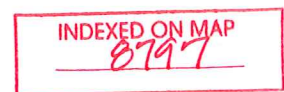
Thence South 36° 35' 17" West a distance of 60.31 feet, with the westerly line of said Lot 13, to a point at the corner common to Lot 13 and said Lot 12;

Thence South 41° 22' 50" West a distance of 60.25 feet with the westerly line of said Lot 12, to the TRUE POINT OF BEGINNING.

Containing 0.032 acre, more or less.

The bearings in the above description are based on the grid bearing of South 20° 43' 53" West for the westerly right-of-way of Seminole Shores Drive as determined by a GPS network of field observations performed in DATE and are based upon the Ohio State Plane Coordinate System, North Zone, NAD83 (2011).

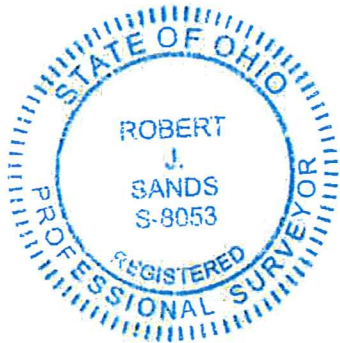
All rebar set are 5/8 inch in diameter and 30 inches in length, with a yellow cap stamped "DLZ OHIO INC."





INNOVATIVE IDEAS
EXCEPTIONAL DESIGN
UNMATCHED CLIENT SERVICE

I certify that this description is based upon a survey conducted under my direct supervision in August, 2024 and that it and the information contained herein are true and correct to the best of my knowledge.



DLZ Ohio, Inc.

Robert J. Sands 09/06/24

Robert J. Sands
Professional Surveyor No. 8053

2421-6048.00

INDEXED ON MAP
8797

LEGEND:

- ⊙ 1/2 INCH REBAR FOUND
- 5/8 INCH REBAR FOUND
- ⊕ 3/4 INCH IRON PIPE FOUND
- ⊙ MAGNETIC NAIL SET
- 5/8 INCH BY 30 INCH REBAR SET WITH YELLOW I.D. CAP STAMPED "DLZ OHIO, INC."

R/W = RIGHT OF WAY

P.O.B. = POINT OF BEGINNING

DEED & SURVEY REFERENCES:

DEED REFERENCES ARE SHOWN HEREON.

LOGAN COUNTY ENGINEER'S MAP ROOM FILES:
 6088, 7122, 7123 AND 8797.

SEMINOLE SHORES SUBDIVISION NO. 1
 PLAT CABINET A, SLIDE 251.

BASIS FOR BEARINGS:


BEARINGS AND DISTANCES, SHOWN HEREON, ARE DERIVED FROM GPS OBSERVATIONS BASED ON GRID NORTH, OHIO STATE PLANE COORDINATE SYSTEM, NORTH ZONE, NAD83 (2011, EPOCH 2010), WITH THE WESTERLY RIGHT-OF-WAY LINE OF SEMINOLE SHORE DRIVE, HAVING A BEARING OF S 20°43'53" W.

CERTIFICATION:

THIS PLAT WAS PREPARED BY DLZ OHIO, INC. AND IS A TRUE AND ACCURATE REPRESENTATION, TO THE BEST OF MY KNOWLEDGE AND BELIEF, OF A SURVEY MADE BY THE SAME IN AUGUST, 2024.

THIS SURVEY WAS PERFORMED WITHOUT THE BENEFIT OF A TITLE POLICY; ALL OWNERSHIP SHOWN IS BASED UPON RECORD DATA ACQUIRED AT THE TIME OF SURVEY, NO GUARANTEE IS PLACED UPON ACTUAL OWNERSHIP OF ANY PROPERTY.

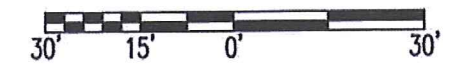
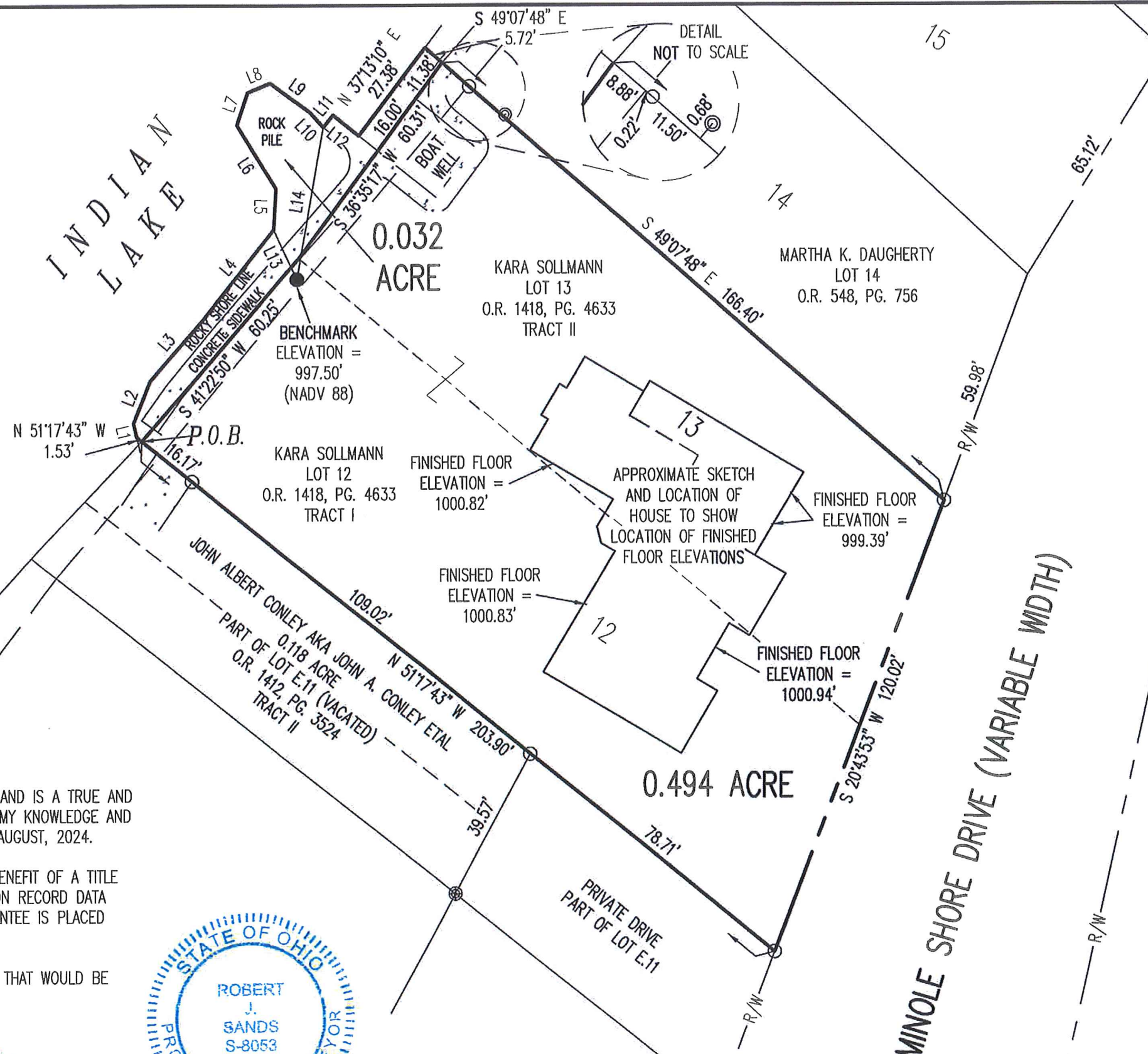
EASEMENTS MAY EXIST ON SUBJECT PROPERTY THAT WOULD BE REVEALED IN A TITLE EXAMINATION.


 ROBERT J. SANDS
 PROFESSIONAL SURVEYOR NO. 8053
 DATE 09/06/24



OCCUPATION NOTE:

NO EVIDENCE OF OCCUPATION ALONG BOUNDARY LINES UNLESS OTHERWISE SHOWN



SCALE: 1" = 30'
 DISTANCES SHOWN HEREON ARE IN U.S. SURVEY FEET

ELEVATION NOTE:

VERTICAL DATUM IS BASED ON NAVD 88.

LINE	BEARING	DISTANCE
L1	N 13°23'46" W	3.63'
L2	N 21°40'16" E	11.34'
L3	N 41°19'26" E	20.13'
L4	N 39°12'03" E	28.69'
L5	N 03°34'49" E	10.10'
L6	N 32°14'16" W	18.67'
L7	N 19°00'53" E	8.53'
L8	N 67°57'00" E	6.21'
L9	S 53°58'40" E	12.15'
L10	S 42°07'37" E	5.09'
L11	N 39°15'13" E	3.84'
L12	S 51°22'42" E	8.23'
L13	S 25°07'23" E	13.61'
L14	S 10°02'39" W	38.26'

SURVEY OF
0.494 ACRE
 LOTS 12 AND 13
 SEMINOLE SHORES SUBDIVISION NO. 1
 PLAT CABINET A, SLIDE 251
 AND
0.032 ACRE
 INDIAN LAKE RESERVOIR LANDS
 LYING IN
 VIRGINIA MILITARY SURVEY 12276
 STOKES TOWNSHIP
 LOGAN COUNTY, OHIO



P.O. Box 237 • Bellefontaine, OH 43311
 (937) 593-7335 • www.dlz.com
 Project #2421-6048.00

INDEXED ON MAP
 8797