

LEGEND:  
 ● = 5/8 INCH IRON BAR SET

SCALE: 1" = 20'



SURVEY OF LOTS 268 AND 269 IN  
 AYONDALE PARK ALLOT. N° 3,  
 VIRGINIA MILITARY SURVEY 12276,  
 STOKES TOWNSHIP, LOGAN COUNTY,  
 OHIO FOR PHILLIP HULL  
 ON OCTOBER 29, 1991



1P  
 INDEXED ON MAP  
 8584

*Leslie H. Geeslin*  
 LESLIE H. GEESLIN  
 RUSHLYVANIA, OH  
 (513) 468-2793

REC'D 12-3-09 SMY OK

# Lee Surveying and Mapping Co., Inc.

Land Surveys • Topography • Subdivisions • Construction Layout

117 N. Madriver St.  
Bellefontaine OH 43311



Phone: (937) 593-7335  
Fax: (937) 593-7444  
surveys@lsminc.us

## HORN 0.024 ACRE

Lying in Virginia Military Survey 12276, Stokes Township, Logan County, Ohio.

Being out of the H. Dean Horn and Mary Jean Horn Lot 290 of Avondale Park Allotment #3 (Plat Cabinet A, Slide 241) as deeded and described in Official Record 810, Page 773, Tract I of the Logan County Records of Deeds and being more particularly described as follows:

Beginning on a 5/8 inch iron rod set on the northeast corner of Lot 289 of Avondale Park Allotment #3 on the west right-of-way of Bayview Lane.

THENCE, with the north line of Lot 289, S 75°-39'-06"W, a distance of 79.98 feet to a 5/8 inch iron rod set on the northwest corner of Lot 289 on the east right-of-way of Lakeview Court (variable widths).

THENCE, with the east right-of-way of Lakeview Court, N 14°-15'-02"W, a distance of 13.00 feet to a 5/8 inch iron rod set.

THENCE, N 75°-39'-06"E, a distance of 79.98 feet to a 5/8 inch iron rod set on the west right-of-way of Bayview Lane.

THENCE, with the west right-of-way of Bayview Lane (20 feet wide), S 14°-15'-23"E, a distance of 13.00 feet to the point of beginning.

Containing 0.024 acre.

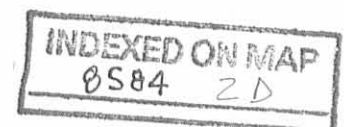
The basis for bearings is the west right-of-way of Bayview Lane, being S 14°-15'-23"E, and all other bearings are from angles and distances measured in a field survey by Lee Surveying and Mapping Co., Inc. on November 19, 2009, Revised December 2, 2009.



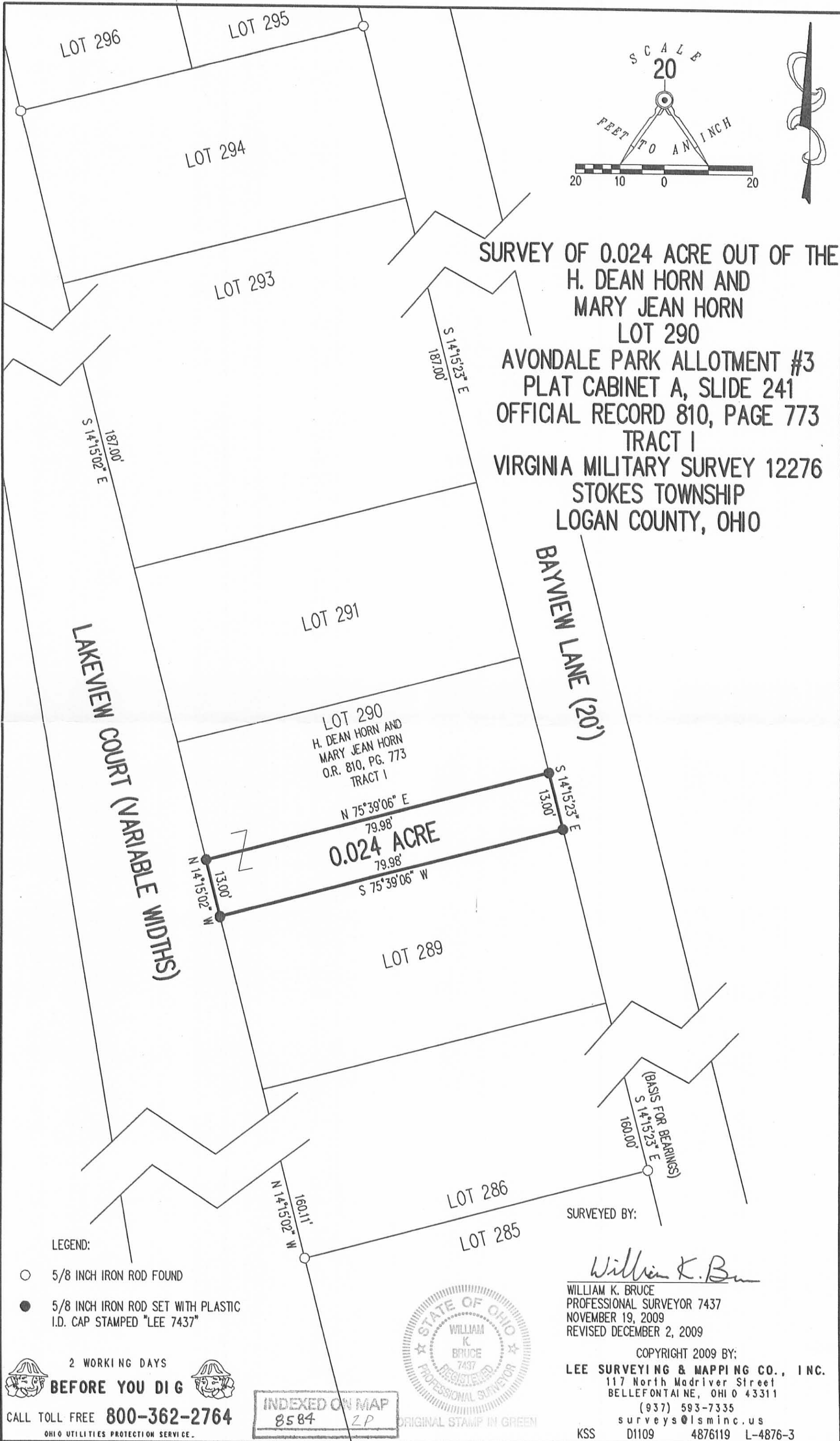
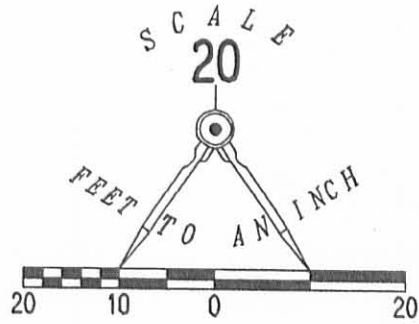
Description prepared by:

*William K. Bruce*

William K. Bruce  
Professional Surveyor 7437  
December 3, 2009



4876119



**SURVEY OF 0.024 ACRE OUT OF THE  
H. DEAN HORN AND  
MARY JEAN HORN  
LOT 290  
AVONDALE PARK ALLOTMENT #3  
PLAT CABINET A, SLIDE 241  
OFFICIAL RECORD 810, PAGE 773  
TRACT I  
VIRGINIA MILITARY SURVEY 12276  
STOKES TOWNSHIP  
LOGAN COUNTY, OHIO**

LOT 290  
H. DEAN HORN AND  
MARY JEAN HORN  
O.R. 810, PG. 773  
TRACT I

**0.024 ACRE**

**LAKEVIEW COURT (VARIABLE WIDTHS)**

**BAYVIEW LANE (20')**

**LEGEND:**

- 5/8 INCH IRON ROD FOUND
- 5/8 INCH IRON ROD SET WITH PLASTIC I.D. CAP STAMPED "LEE 7437"

2 WORKING DAYS  
**BEFORE YOU DIG**  
CALL TOLL FREE **800-362-2764**  
OHIO UTILITIES PROTECTION SERVICE.

INDEXED ON MAP  
8584 ZP



SURVEYED BY:

*William K. Bruce*

WILLIAM K. BRUCE  
PROFESSIONAL SURVEYOR 7437  
NOVEMBER 19, 2009  
REVISED DECEMBER 2, 2009

COPYRIGHT 2009 BY:  
**LEE SURVEYING & MAPPING CO., INC.**  
117 North Madriver Street  
BELLEFONTAINE, OHIO 43311  
(937) 593-7335  
surveys@lsmcinc.us  
KSS D1109 4876119 L-4876-3