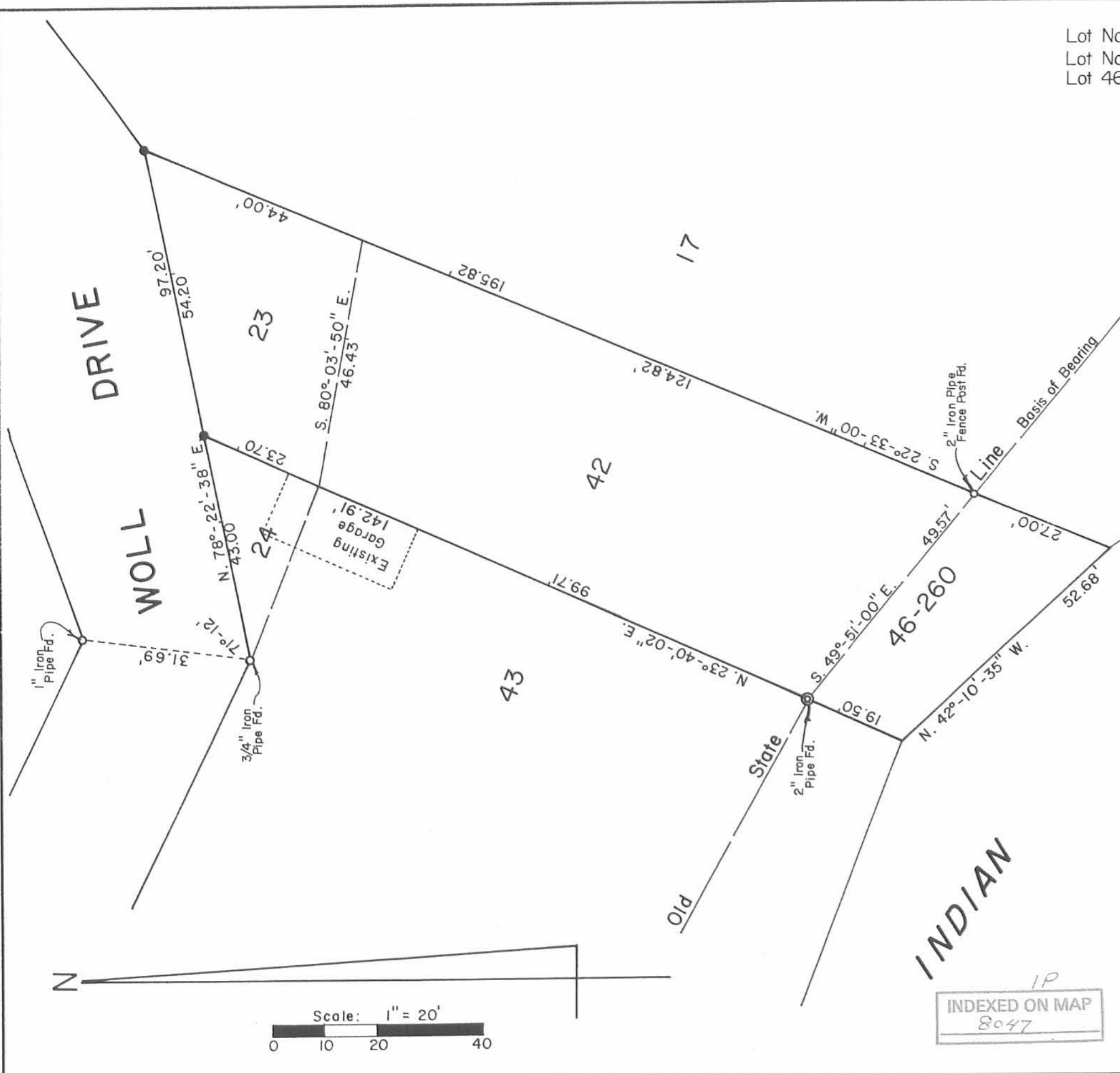


Lot No. 23 - Per. Par. No. 43-005-18-18-027.000 - 1,520.360^{sq ft} or 0.035 Acres.
 Lot No. 42 - Per. Par. No. 43-005-18-18-028.000 - 5,207.715^{sq ft} or 0.120 Acres.
 Lot 46-260 - Per. Par. No. 43-005-18-18-028.001 - 1,107.255^{sq ft} or 0.025 Acres.
 Total ----- 7,825.330^{sq ft} or 0.180 Acres.



References:
 Thomas Addition No. 2.
 Plat Cab. A, Slide 265 (10-14-1946).
 Thomas Addition No. 4.
 Plat Cab. A, Slide 291 (6-20-1951).
 Land Installment Contract.
 O. R. No. 26, Pages 546-549 (8-13-1986).



● - 5/8" x 30" Rebars Set.

BERRY SURVEY - Lots No. 23, 42, and 46-260, Thomas Addition to Chippewa Park, V.M.S. No. 12276, Stokes Township, Logan County, Ohio.

SCALE: 1" = 20'	APPROVED BY:	DRAWN BY: DEG
DATE: 6-14-1990		REVISED:

Daniel E. Gilbert
 Daniel E. Gilbert, P.S.
 Reg. Sur. No. 5402

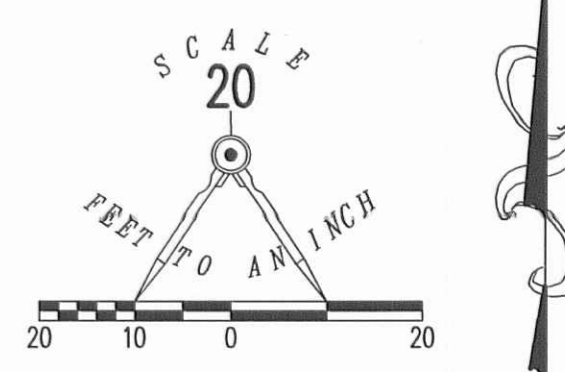
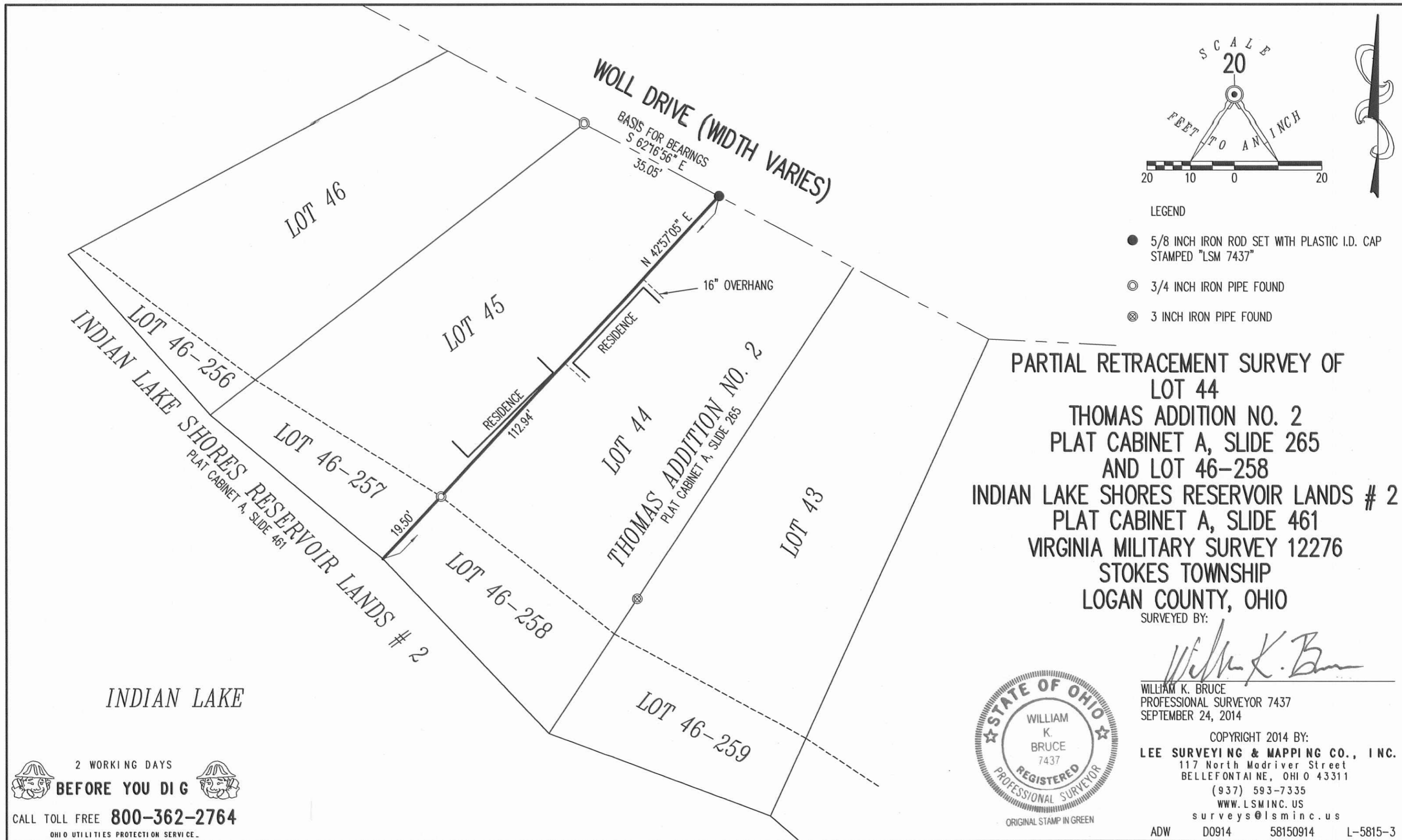
DRAWING NUMBER: 090-033

INDEXED ON MAP
 8047

MAP ROOM

9-30-14

APPROVED



- LEGEND
- 5/8 INCH IRON ROD SET WITH PLASTIC I.D. CAP STAMPED "LSM 7437"
 - ⊙ 3/4 INCH IRON PIPE FOUND
 - ⊗ 3 INCH IRON PIPE FOUND

PARTIAL RETRACEMENT SURVEY OF
 LOT 44
 THOMAS ADDITION NO. 2
 PLAT CABINET A, SLIDE 265
 AND LOT 46-258
 INDIAN LAKE SHORES RESERVOIR LANDS # 2
 PLAT CABINET A, SLIDE 461
 VIRGINIA MILITARY SURVEY 12276
 STOKES TOWNSHIP
 LOGAN COUNTY, OHIO

SURVEYED BY:
William K. Bruce



WILLIAM K. BRUCE
 PROFESSIONAL SURVEYOR 7437
 SEPTEMBER 24, 2014

COPYRIGHT 2014 BY:
 LEE SURVEYING & MAPPING CO., INC.
 117 North Madriver Street
 BELLEFONTAINE, OHIO 43311
 (937) 593-7335
 WWW.LSMINC.US
 surveys@lsminc.us

ADW D0914 58150914 L-5815-3

INDIAN LAKE

2 WORKING DAYS
 BEFORE YOU DIG

CALL TOLL FREE 800-362-2764
 OHIO UTILITIES PROTECTION SERVICE.

INDEXED ON MAP
 2047 ZP