

EAGLE PATH  
 N 89° 55' 53" E 175.08

HIAWATHA PATH

POCAHONTAS PATH

716.79  
 TO R/R SPIKE FO. AT  
 E BLUE JACKET

TO R/R SPIKE FO. AT  
 E BLUE JACKET  
 716.63

SCALE: 1" = 30'

LEGEND:

- ⊙ = R/R SPIKE FO.
- = P.K. NAIL SET
- = 5/8" BAR SET



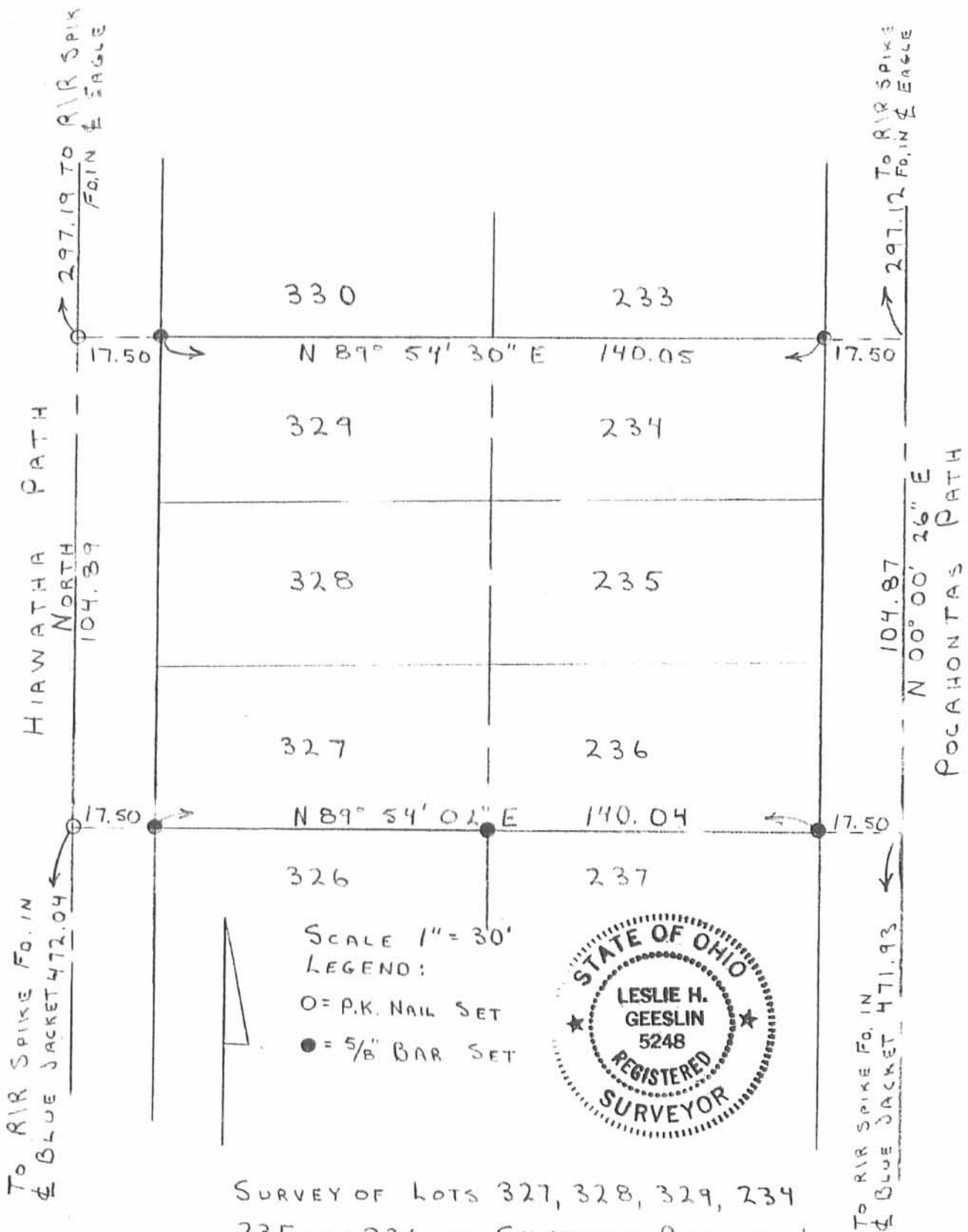
SURVEY OF LOTS 228, 229, 334, AND 335  
 IN CHIPPEWA PARK NO. 1; V.M.S. 12276;  
 STOKES TWP.; LOGAN CO., OHIO.  
 APRIL 18, 1989, FOR KENNETH LORD

INDEXED ON MAP  
 7905

IP

*Leslie H. Geeslin*  
 LESLIE H. GEESLIN  
 RUSHSVLVAHIN, OHIO

D.L.G.



SCALE 1" = 30'  
 LEGEND:  
 ○ = P.K. NAIL SET  
 ● = 5/8" BAR SET

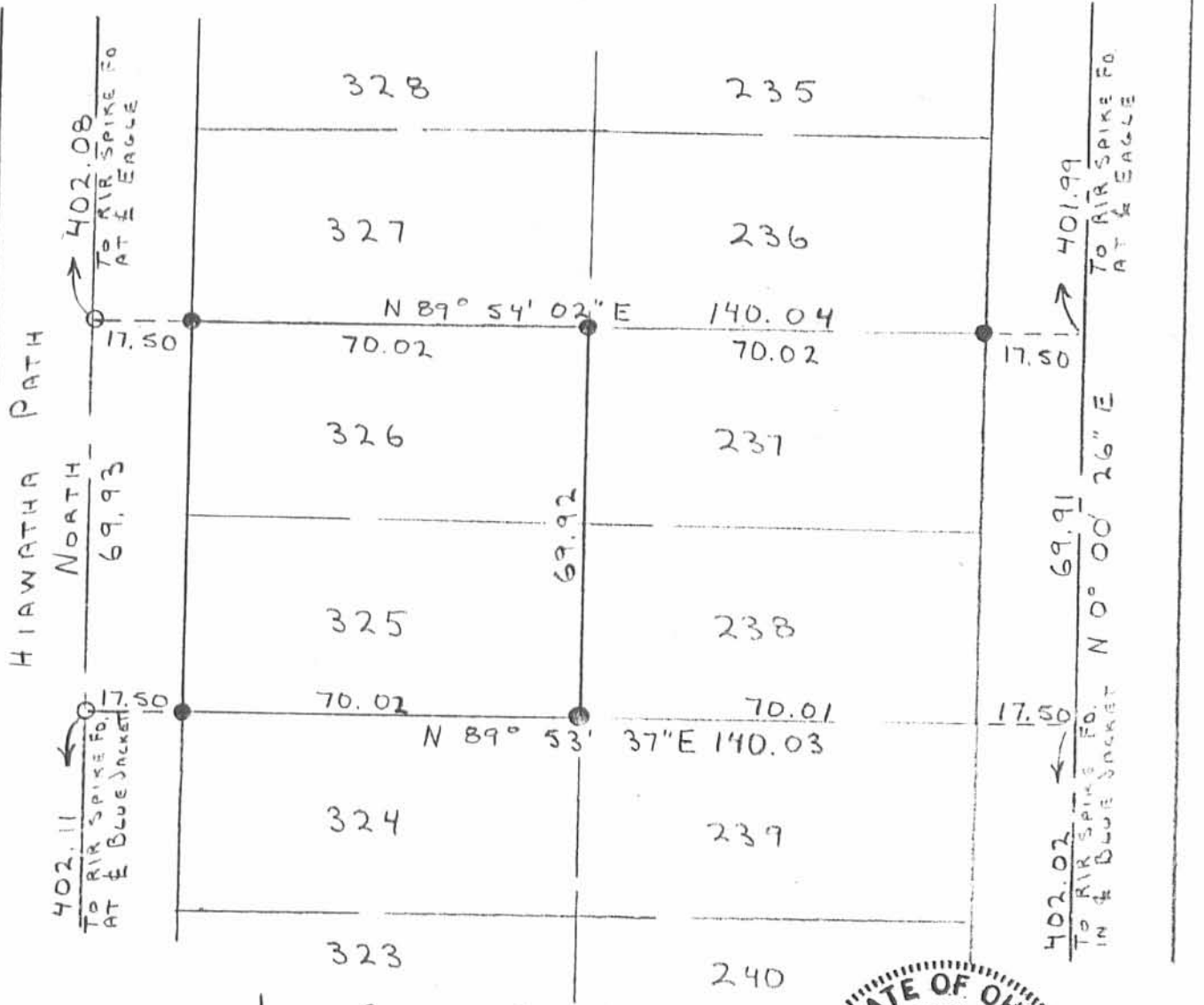


SURVEY OF LOTS 327, 328, 329, 234  
 235, AND 236 IN CHIPPEWA PARK NO. 1;  
 VMS. 12276; STOKES TWP.; LOGAN CO.;  
 OHIO. FOR FARRELL LANDON.  
 APRIL 18, 1989

INDEXED ON MAP  
 7905

2P

*Leslie H. Geeslin*  
 LESLIE H. GEESLIN  
 RUSHSVLVANIA, OH



SCALE: 1" = 30'

LEGEND:

O = P.K. NAIL SET

● = 5/8" BAR SET



SURVEY OF LOTS 325 AND 326 IN  
 CHIPPEWA PARK No. 1; V.M.S. 12276;  
 STOKES TWP.; LOGAN CO.; OHIO.  
 FOR CARL JONES, APRIL 18, 1989

INDEXED ON MAP  
7905

3P

*Leslie H. Geeslin*  
 LESLIE H. GEESLIN  
 RUSHSVLANIA, OHIO

REC'D. 7-9-98 gmy ok

**LESLIE H. GEESLIN**

**REGISTERED SURVEYOR 5248**

**P. O. BOX 274**

**RUSHSVLVANIA, OHIO 43347**

**TELEPHONE: (937) 468-2793**

**FAX: (937) 468-2082**

**LANDON SURVEY**

June 19, 1998

The following described real estate situated in the State of Ohio, County of Logan, Township of Stokes, being part Virginia Military 12276 in Chippewa No. 1 as shown in Cabinet "A" Slide 221 and 223.

Beginning at a 5/8 inch iron bar found in the west line of Pocahantas Path at the southeast corner of Lot 233 of Chippewa No. 1 as shown in Cabinet "A" Slide 221 and 223.

Thence with the west line of Pocahantas Path S. 0°01' 54" E. 104.64 feet to a 5/8 inch iron bar found at the northeast corner of Lot 237 of said Chippewa No. 1.

Thence with the north line of said Lot 237 and the north line of Lot 326 of said Chippewa No. 1 S. 89° 54' 37" W. 80.02 feet to a 5/8 inch iron bar set.

Thence crossing Lots 327, 328 and 329 of said Chippewa No. 1 N. 0° 01' 03" W. 104.63 feet to a 5/8 inch iron bar set in the south line of said Lot 330.

Thence with the south line of said Lot 330 and said Lot 233 N. 89° 54' 30" E. 79.99 feet to the place of beginning.

Containing 0.192 acre more or less.

The above described 0.192 acre tract being all of Lots 234 (0.056 ac.), 235 (0.056 ac.) and 236 (0.056 ac.) and the east 10 feet of Lots 327 (0.008 ac.), 328 (0.008 ac.) and 329 (0.008 ac.); all Lots are part of Chippewa No. 1 as shown in Cabinet "A" Slide 221 and 223.

Bearings are based on an assumed bearing (S. 0° 01' 10" E.) for the west line of Pocahantas Path in this field survey by Leslie H. Geeslin, Reg. Surveyor 5248 on June 19, 1998



STOKES\51\LANDON2.SAM

4D-1



*Leslie H. Geeslin*

**LESLIE H. GEESLIN**

**REGISTERED SURVEYOR 5248**

**P. O. BOX 274**

**RUSHSVLVANIA, OHIO 43347**

**TELEPHONE: (937) 468-2793**

**FAX: (937) 468-2082**

**LANDON SURVEY**

June 19, 1998

The following described real estate situated in the State of Ohio, County of Logan, Township of Stokes, being part of Virginia Military Survey 12276 in Chippewa No. 1 as shown in Cabinet "A" Slide 221 and 223.

Beginning at a 5/8 inch iron bar found in the east line of Hiawatha Path at the southwest corner of Lot 330 of Chippewa No. 1 as shown in Cabinet "A" Slide 221 and 223.

Thence with the south line of said Lot 330 N. 89° 54' 30" E. 60.02 feet to a 5/8 inch iron bar set.

Thence passing through Lots 329, 328 and 327 of said Chippewa No. 1 S. 0° 01' 03" E. 104.63 feet to a 5/8 inch iron bar set in the north line of Lot 326 of said Chippewa No. 1.

Thence with the north line of said Lot 326 S. 89° 54' 37" W. 60.02 feet to a 5/8 inch iron bar found at the northwest corner of said Lot 326 in the east line of said Hiawatha Path.

Thence with the east line of said Hiawatha Path N. 0° 01' 02" W. 104.63 feet to the place of beginning.

Containing 0.144 acre more or less.

The above described 0.144 acre tract being part of Lots 327 (0.048 ac), 328 (0.048 ac.) and 329 (0.048 ac.) of Chippewa No. 1 as shown in Cabinet "A" Slide 221 and 223.

Bearings are based on an assumed bearing (N. 0° 01' 05" W.) for the east line of Hiawatha Path in this field survey by Leslie H. Geeslin, Reg. Surveyor 5248 on July 18, 1998.



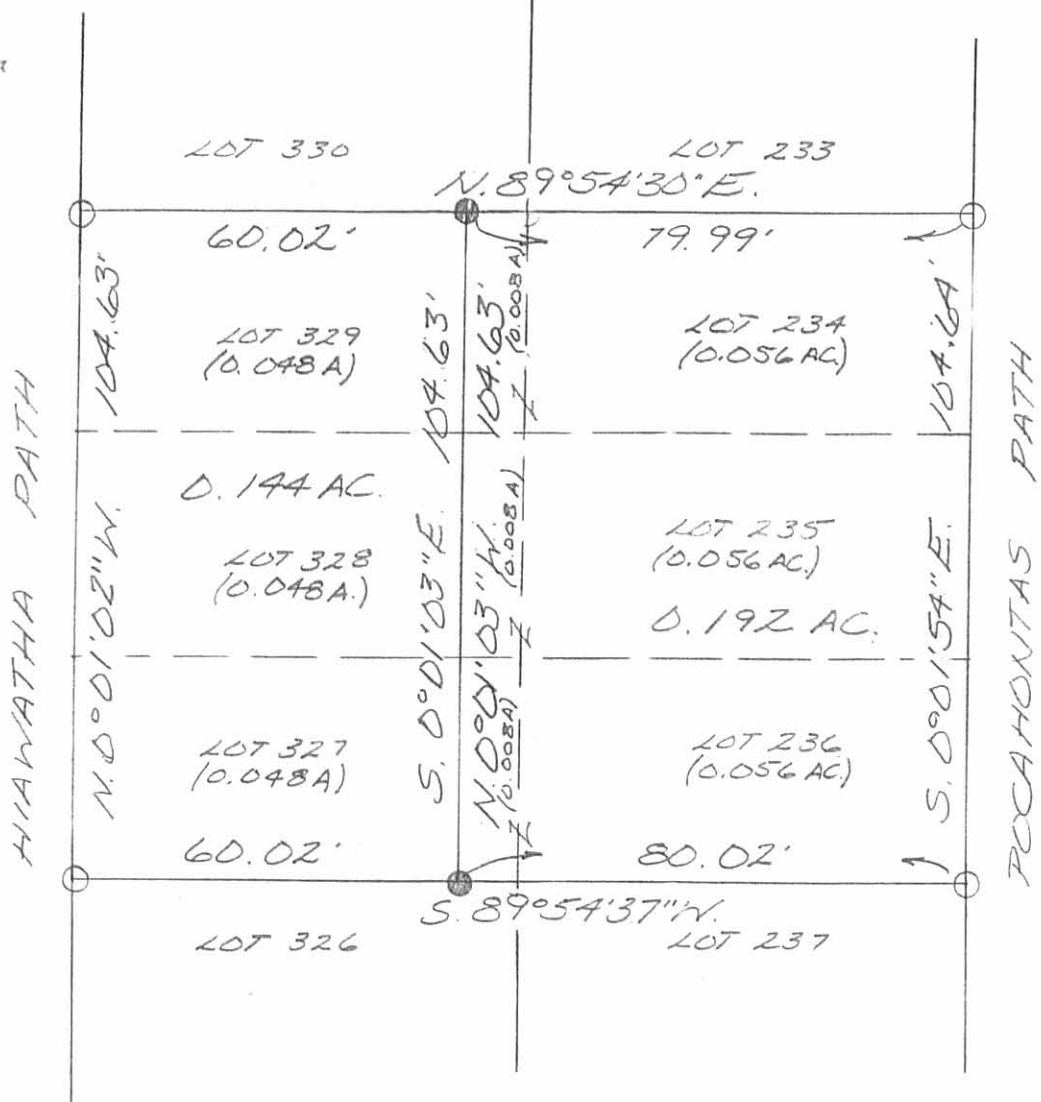
STOKES\51\LANDON1.SAM



4D-2

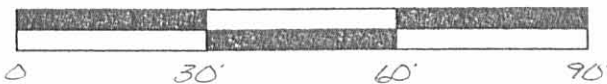
*Leslie H. Geeslin*

CHIPPEWA NO. 1  
CABINET "A" SLIDE 221+223



LEGEND:  
 ○ = 5/8 INCH IRON BAR FOUND  
 ● = 5/8 INCH IRON BAR SET

SCALE: 1" = 30'



SURVEY OF 0.192 ACRE AND 0.144 ACRE  
 IN CHIPPEWA NO. 1, VIRGINIA MILITARY  
 SURVEY 12276, STOKES TOWNSHIP,  
 LOGAN COUNTY FOR FRANKIE  
 LANDON ON JUNE 19, 1998

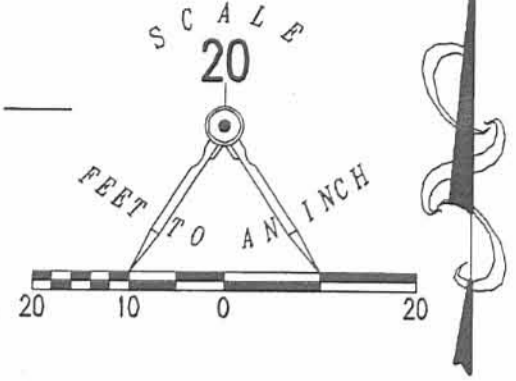


INDEXED ON MAP  
7905 4P

Leslie H. Geeslin  
 LESLIE H. GEESLIN  
 RUSHSVLVANIA, OH  
 PH: (937) 468-2193  
 FAX: (937) 468-2080

REC'D 12-20-06 SMM/MLK

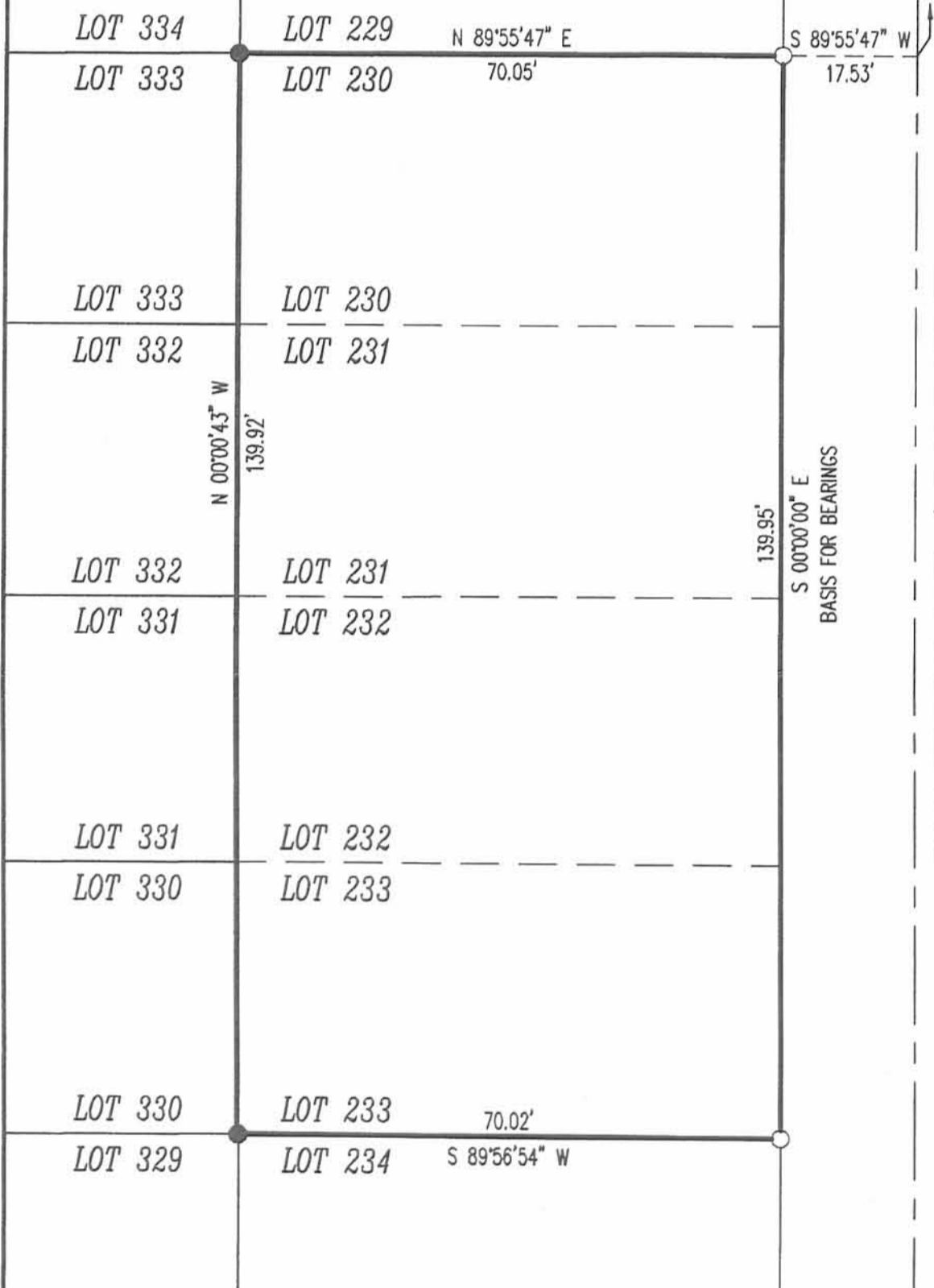
EAGLE PATH (35 FEET WIDE)



LEGEND

- 5/8 INCH IRON ROD SET
- 5/8 INCH IRON ROD FOUND
- ⊗ RAILROAD SPIKE FOUND

CHIPPEWA PARK # 1  
PLAT CABINET A, SLIDE 221



POCAHONTAS PATH (35 FEET WIDE)

A RETRACEMENT SURVEY OF  
 LOTS 230, 231, 232 AND 233  
 CHIPPEWA PARK # 1  
 PLAT CABINET A, SLIDE 221  
 VIRGINIA MILITARY SURVEY 12276  
 STOKES TOWNSHIP  
 LOGAN COUNTY, OHIO

SURVEYED BY:

*Jeffrey I. Lee*  
 JEFFREY I. LEE  
 PROFESSIONAL SURVEYOR 6359  
 DECEMBER 18, 2006



ORIGINAL STAMP IN GREEN

COPYRIGHT 2006 BY:  
 LEE SURVEYING & MAPPING CO., INC.  
 117 North Madriver Street  
 BELLEFONTAINE, OHIO 43311  
 (937) 593-7335

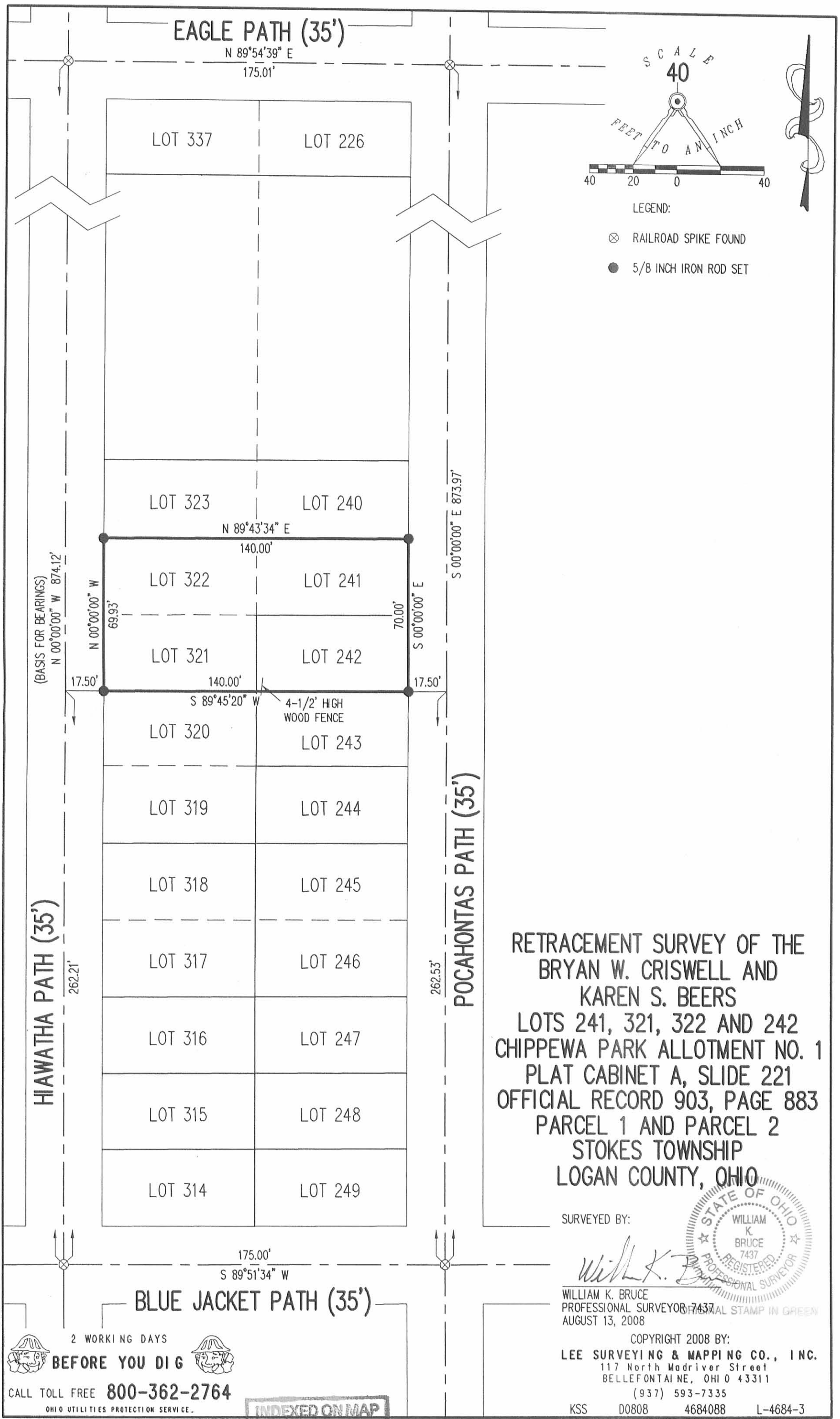
2 WORKING DAYS  
**BEFORE YOU DIG**  
 CALL TOLL FREE **800-362-2764**  
 OHIO UTILITIES PROTECTION SERVICE.

ADW D1206 4355126 L-4355126-3

INDEXED ON MAP  
7905

SP

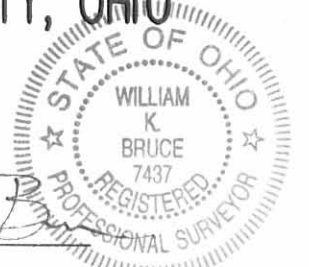
- RECD @ 11-03 811 JK



RETRACEMENT SURVEY OF THE  
BRYAN W. CRISWELL AND  
KAREN S. BEERS  
LOTS 241, 321, 322 AND 242  
CHIPPEWA PARK ALLOTMENT NO. 1  
PLAT CABINET A, SLIDE 221  
OFFICIAL RECORD 903, PAGE 883  
PARCEL 1 AND PARCEL 2  
STOKES TOWNSHIP  
LOGAN COUNTY, OHIO

SURVEYED BY:

*William K. Bruce*



WILLIAM K. BRUCE  
PROFESSIONAL SURVEYOR 7437  
AUGUST 13, 2008

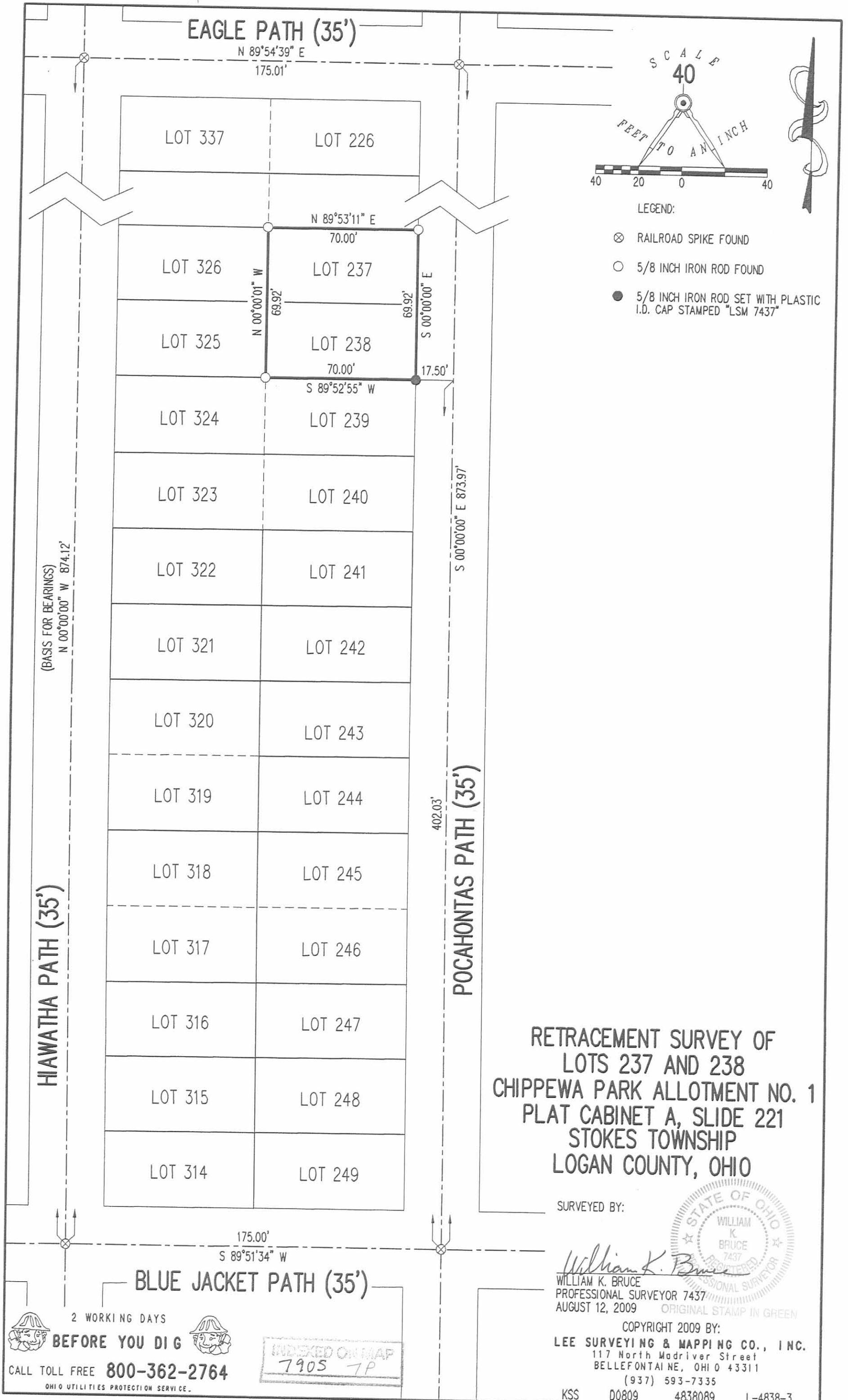
COPYRIGHT 2008 BY:  
**LEE SURVEYING & MAPPING CO., INC.**  
117 North Madriver Street  
BELLEFONTAINE, OHIO 43311  
(937) 593-7335  
KSS D0808 4684088 L-4684-3

2 WORKING DAYS  
**BEFORE YOU DIG**  
CALL TOLL FREE **800-362-2764**  
OHIO UTILITIES PROTECTION SERVICE.

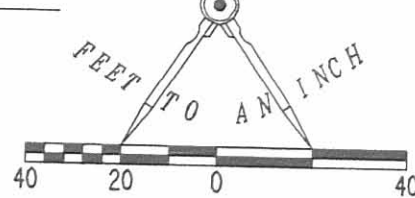
**INDEXED ON MAP**  
7905 GP



REV'D 8-14-09 SUM OK



SCALE  
40

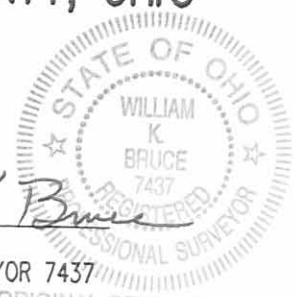


LEGEND:

- ⊗ RAILROAD SPIKE FOUND
- 5/8 INCH IRON ROD FOUND
- 5/8 INCH IRON ROD SET WITH PLASTIC I.D. CAP STAMPED "LSM 7437"

RETRACEMENT SURVEY OF  
 LOTS 237 AND 238  
 CHIPPEWA PARK ALLOTMENT NO. 1  
 PLAT CABINET A, SLIDE 221  
 STOKES TOWNSHIP  
 LOGAN COUNTY, OHIO

SURVEYED BY:



*William K. Bruce*  
 WILLIAM K. BRUCE  
 PROFESSIONAL SURVEYOR 7437  
 AUGUST 12, 2009 ORIGINAL STAMP IN GREEN

COPYRIGHT 2009 BY:  
 LEE SURVEYING & MAPPING CO., INC.  
 117 North Madriver Street  
 BELLEFONTAINE, OHIO 43311  
 (937) 593-7335

KSS D0809 4838089 L-4838-3

(BASIS FOR BEARINGS)  
N 00°00'00" W 874.12'

HIAWATHA PATH (35')

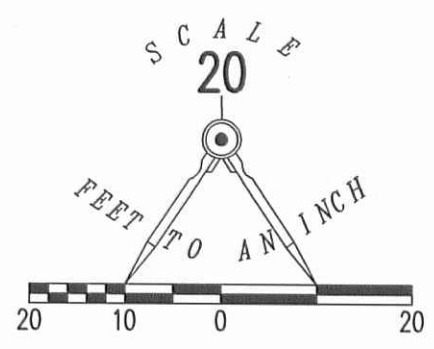
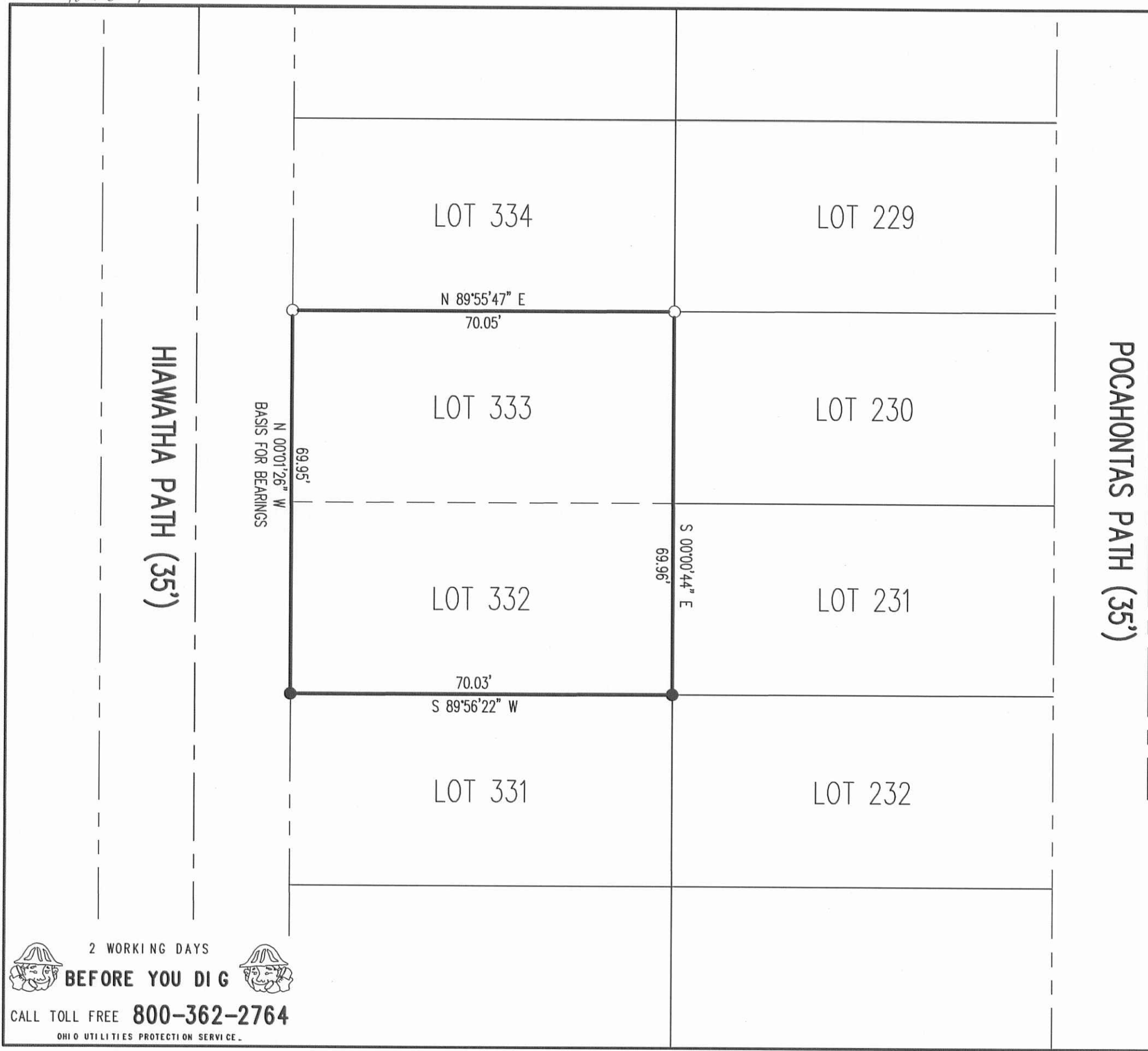
POCAHONTAS PATH (35')

BLUE JACKET PATH (35')

2 WORKING DAYS  
**BEFORE YOU DIG**  
 CALL TOLL FREE **800-362-2764**  
 OHIO UTILITIES PROTECTION SERVICE.

INDEXED ON MAP  
 7905 7P

✓ **APPROVED**  
10-28-14

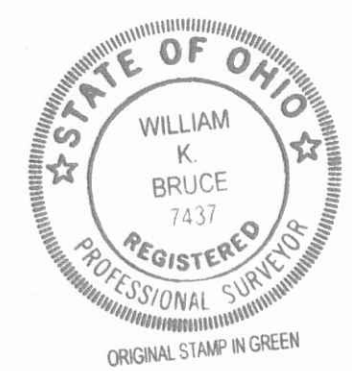


- LEGEND
- 5/8 INCH IRON ROD SET WITH PLASTIC I.D. CAP STAMPED "LSM7437"
  - 5/8 INCH IRON ROD FOUND

RETRACEMENT SURVEY OF  
 LOTS 332 AND 333  
 CHIPPEWA PARK # 1  
 PLAT CABINET A, SLIDE 221  
 VIRGINIA MILITARY SURVEY 12276  
 STOKES TOWNSHIP  
 LOGAN COUNTY, OHIO

SURVEYED BY:  
*William K. Bruce*

WILLIAM K. BRUCE  
 PROFESSIONAL SURVEYOR 7437  
 OCTOBER 23, 2014



COPYRIGHT 2014 BY:  
**LEE SURVEYING & MAPPING CO., INC.**  
 117 North Madriver Street  
 BELLEFONTAINE, OHIO 43311  
 (937) 593-7335  
 WWW.LSMINC.US  
 surveys@lsminc.us  
 ADW D1014 43551014 L-4355-3

2 WORKING DAYS  
**BEFORE YOU DIG**  
 CALL TOLL FREE **800-362-2764**  
 OHIO UTILITIES PROTECTION SERVICE.

INDEXED ON MAP  
 7905 0P