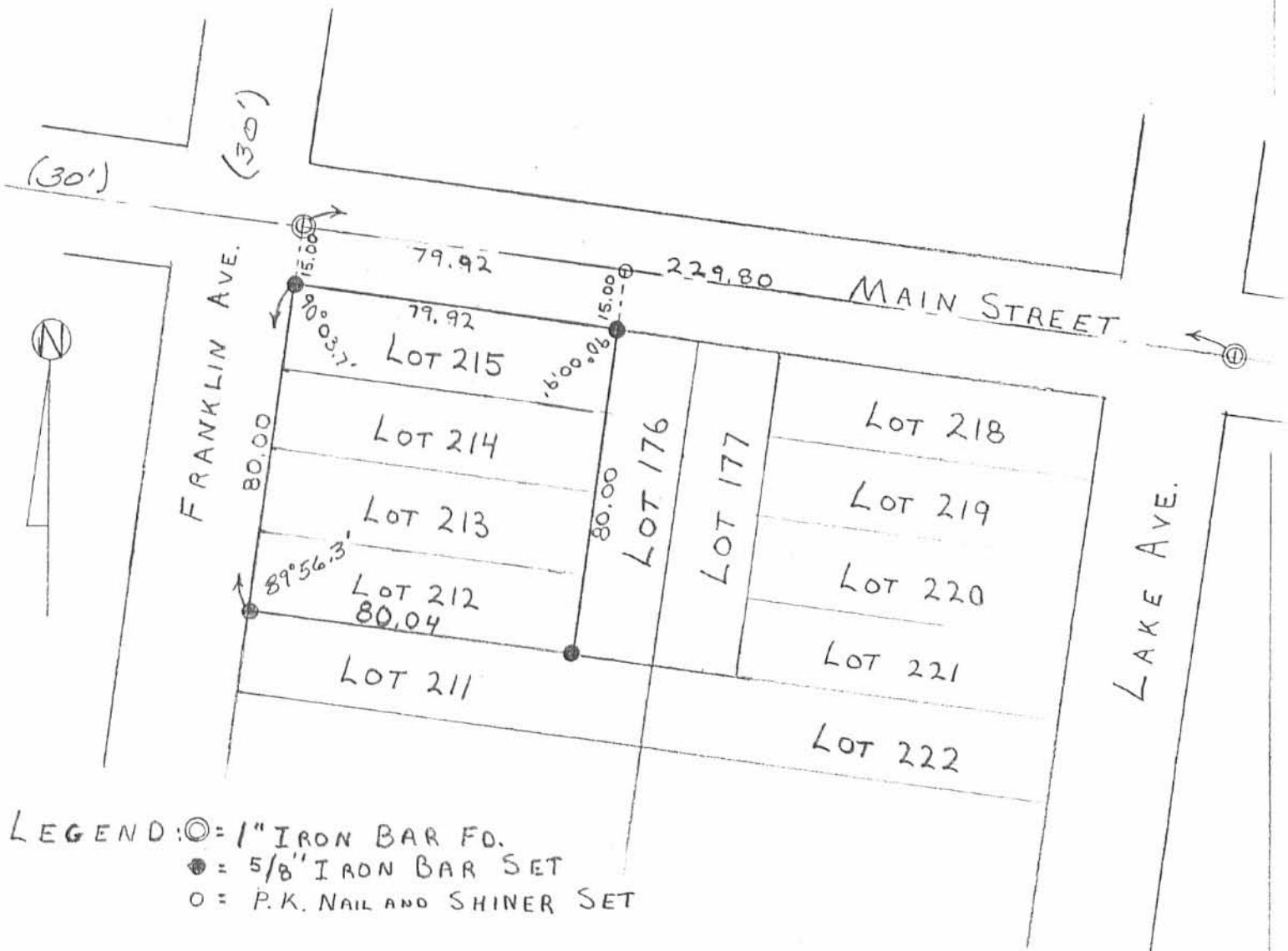


Received 2-26-87

OK 3-3-87 C.R.



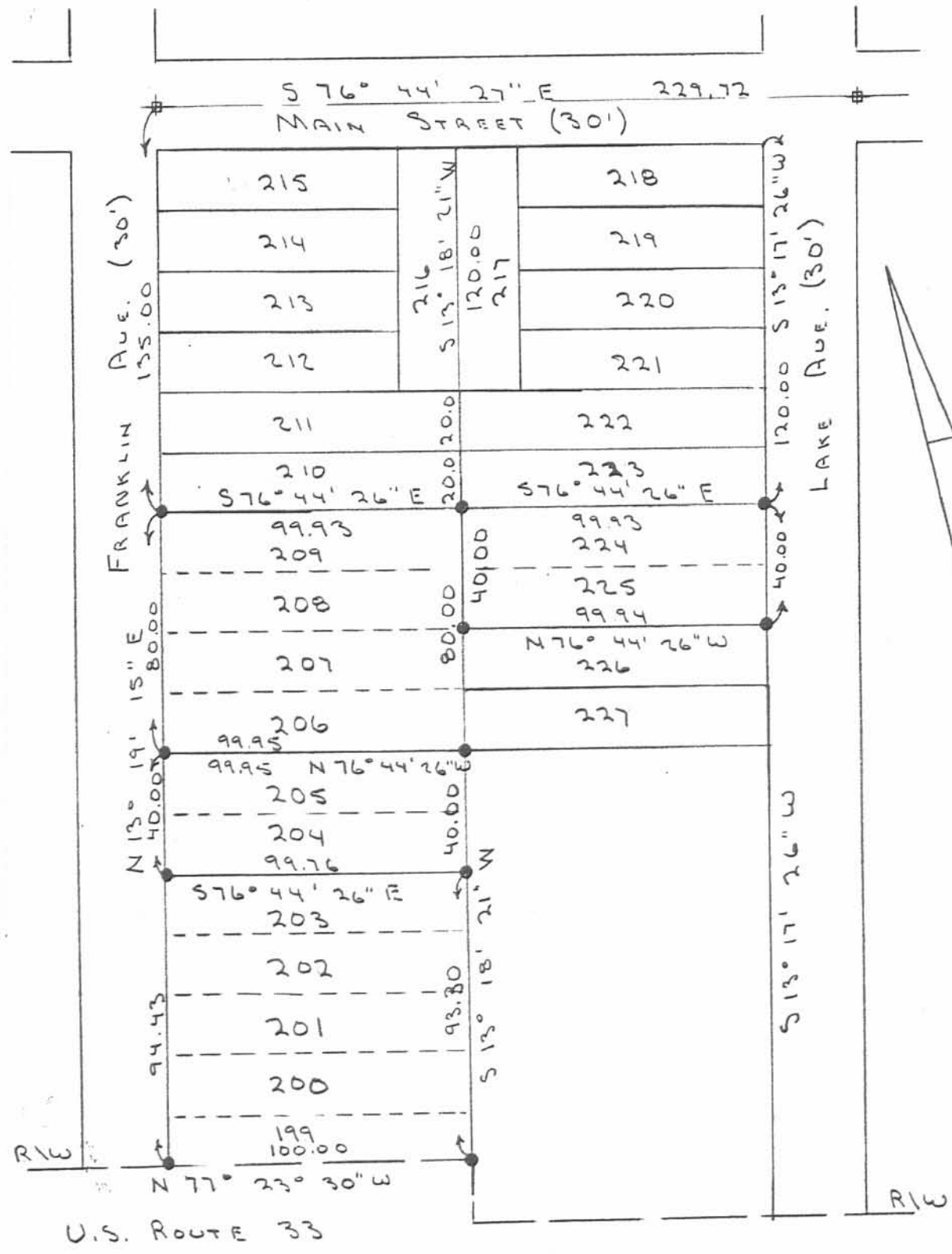
LEGEND: ○ = 1" IRON BAR FD.
 ● = 5/8" IRON BAR SET
 ○ = P.K. NAIL AND SHINER SET

SURVEY OF LOTS 212, 213, 214 & 215
 IN NEW MIDWAY PLACE, SECTION 35,
 TOWN 6 S., RANGE 8 E., STOKES
 TOWNSHIP, LOGAN COUNTY, OHIO
 FEBRUARY, 1987
 SCALE: 1" = 40'

INDEXED ON MAP
 7608 1P



Leslie H. Geeslin
 LESLIE H. GEESLIN
 RUSHsylvania, OHIO



SCALE: 1" = 50'

LEGEND:

- = 1" IRON BAR FO.
- = 5/8" IRON BAR SET

SURVEY OF LOTS 199-203,
 LOTS 204-205, LOTS 206-209,
 AND LOTS 224-225 IN NEW MIDWAY
 PLACE SUBDIVISION, STOKES TWP.,
 LOGAN CO., OHIO. JUNE 23, 1998



Leslie H. Geeslin
 LESLIE H. GEESLIN
 RUSHSLUANIA, OHIO
 PH: (937) 468-2793
 (DLG)

INDEXED ON MAP
 7608 2P