

WATERFRONT LAND CO.  
TO  
LOGAN COUNTY COMMISSIONERS  
"LIFT STATION SITE"

SEPTEMBER 27, 1975

THE FOLLOWING DESCRIBED REAL ESTATE SITUATED IN THE TOWNSHIP  
OF STOKES, COUNTY OF LOGAN, STATE OF OHIO AND BEING A PART OF  
LOT NO. 35 OF HOLIDAY SHORES ALLOTMENT NO. 3 AS RECORDED IN  
PLAT BOOK 6-F PAGE 77, LOGAN COUNTY RECORDERS OFFICE:

BEGINNING AT AN IRON BAR AT THE SOUTHEAST CORNER OF LOT NO. 35  
OF HOLIDAY SHORES ALLOTMENT NO. 3;

THENCE WITH THE EAST LINE OF LOT NO. 35, N. 4°-31'E. 10.33  
FEET TO AN IRON BAR;

THENCE S. 79°-56'W. 12.60 FEET TO AN IRON BAR;

THENCE S. 10°-04'E. 10.00 FEET TO AN IRON BAR IN THE SOUTH  
LINE OF SAID LOT NO. 35;

THENCE WITH THE SOUTH LINE OF LOT NO. 35, N. 79°-56'E.  
10.00 FEET TO THE PLACE OF BEGINNING, CONTAINING 113.00  
SQUARE FEET OR 0.003 ACRES, MORE OR LESS.

THE ABOVE TRACT BEING SURVEYED OUT THE SOUTHEAST CORNER  
OF LOT NO. 35

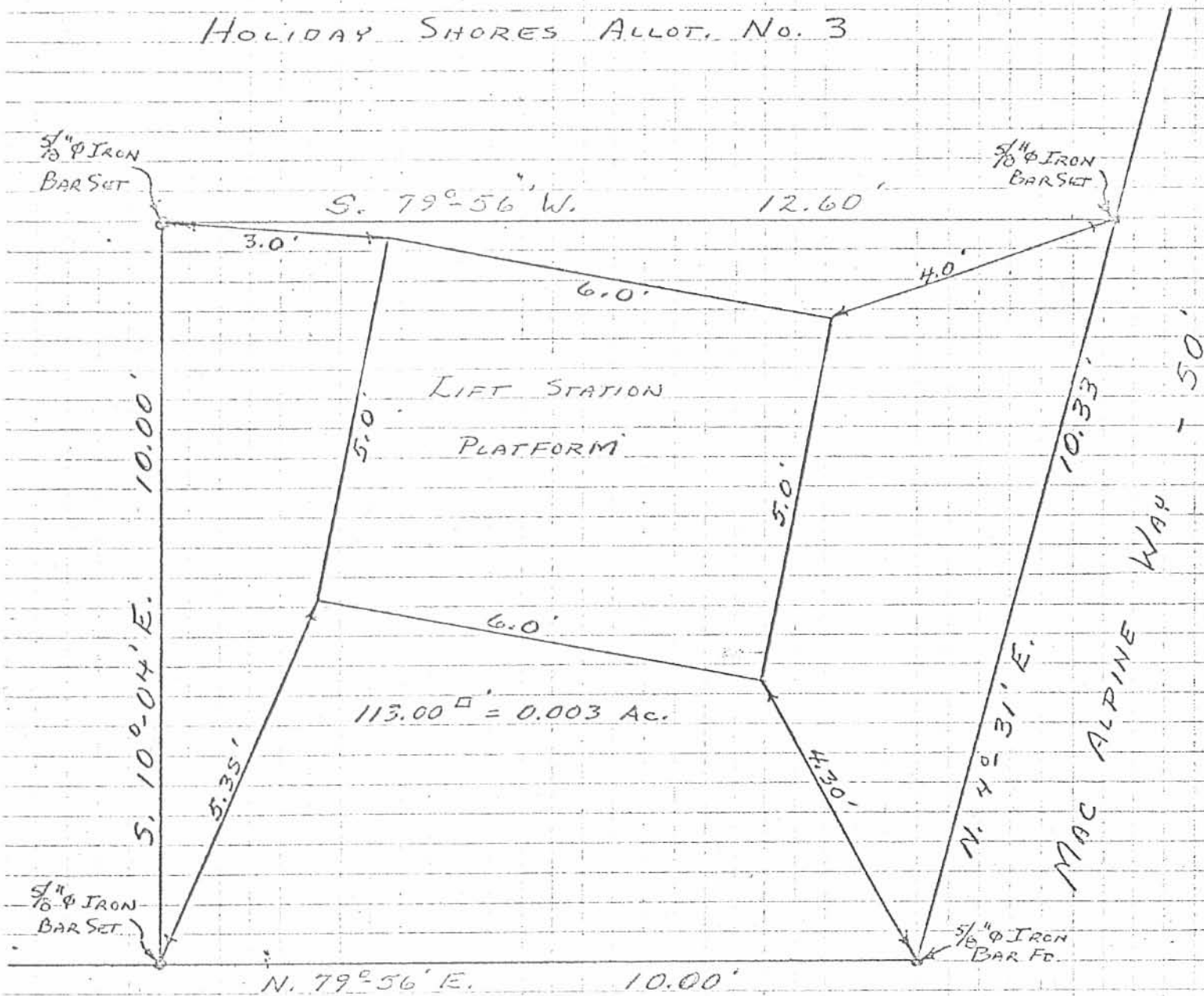
7273 1D

REGISTERED MAP

Daniel E. Gilbert  
DANIEL E. GILBERT, P.S.  
REG. SUR. NO. 5402  
1041 N. MAIN ST.  
BELLEFONTAINE, OHIO  
43311

Lot 35

HOLIDAY SHORES ALLOT. No. 3



MAC ALPINE WAY - 50'

REFERENCE:  
HOLIDAY SHORES ALLOT. No. 3  
PLAT BOOK 6F PAGE 77

WATERFRONT LAND Co.  
To  
LOGAN COUNTY COMMISSIONERS  
"LIFT STATION SITE"  
PART OF LOT No. 35  
HOLIDAY SHORES ALLOT. No. 3  
SECTION 23 T.6S. R.8E.  
STOKES TOWNSHIP  
LOGAN COUNTY, OHIO  
SEPTEMBER 27, 1975

SCALE: 1" = 20'

7273 IP

INDEXED ON MAP

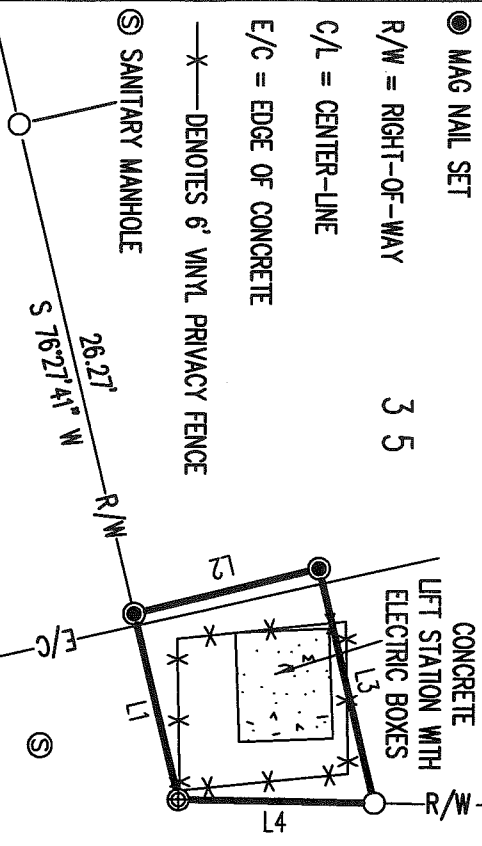


SURVEYED AND PLATTED BY:  
DANIEL E. GILBERT, P.S.  
REG. SUR. No. 5402  
1041 N. MAIN ST.  
BELLEFONTAINE, OHIO 43311

10-2-18  
APPROVED

- LEGEND:**
- ⊗ 3/8 INCH IRON ROD FOUND
  - 5/8 INCH IRON ROD FOUND
  - MAG NAIL SET
  - R/W = RIGHT-OF-WAY
  - C/L = CENTER-LINE
  - E/C = EDGE OF CONCRETE
  - X— DENOTES 6' VINYL PRIVACY FENCE
  - Ⓢ SANITARY MANHOLE

LINE	BEARING	DISTANCE
L1	S 76°27'41" W	10.00'
L2	N 13°34'25" W	10.00'
L3	N 76°37'28" E	12.60'
L4	S 01°03'26" W	10.30'



**BASIS FOR BEARINGS:**

THE BASIS FOR BEARINGS, SHOWN HEREON, IS GRID NORTH, OHIO STATE PLANE COORDINATE SYSTEM, NORTH ZONE, NAD83 (2011).

DISTANCES SHOWN HEREON ARE IN U.S. SURVEY FEET.

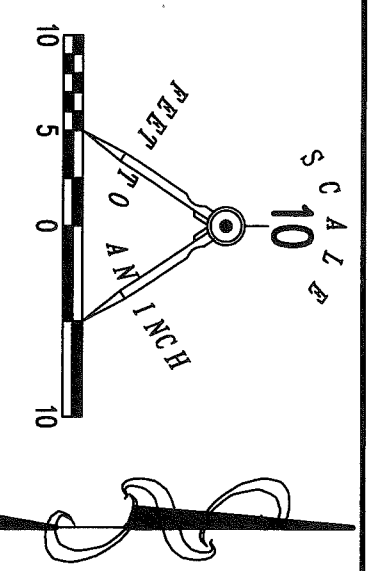
**MACALPINE WAY (50')**

THIS SURVEY WAS PREPARED IN THE ABSENCE OF A COMPLETE AND ACCURATE TITLE SEARCH AND DOES NOT GUARANTEE TITLE.



CALL TOLL FREE **800-362-2764**  
OHIO UTILITIES PROTECTION SERVICE

**COOPER AVENUE (50')**



**RETRACEMENT SURVEY OF  
THE BOARD OF COUNTY COMMISSIONERS  
OF LOGAN COUNTY, OHIO  
0.003 ACRE TRACT  
VOLUME 360, PAGE 868  
PART OF LOT 35  
HOLIDAY SHORES ALLOTMENT NO. 3  
PLAT CABINET A, SLIDE 565  
STOKES TOWNSHIP  
LOGAN COUNTY, OHIO  
SURVEYED BY:**

**DEED & SURVEY REFERENCES:**

VOL. 360, PG. 868  
HOLIDAY SHORES ALLOTMENT NO. 3  
PLAT CABINET A, SLIDE 565

INDEXED ON MAP  
7273

**DANIEL A. NEER**  
PROFESSIONAL SURVEYOR NO. 8533  
SEPTEMBER 17, 2018

COPYRIGHT 2018 BY:

**LEE SURVEYING & MAPPING CO.**  
117 North Madriver Street  
BELLEFONTAINE, OHIO 43311  
(937) 593-7335  
WWW.LEE-SURVEYING.COM  
surveys@lee-surveying.com  
KSS D0918 61470918 L-6147-4