

F.B. 709 P. 19 (D.E.C.)

T.R. No. 239

STOKES AND WASHINGTON

STA. 40' R/W.

7+68.4 R.R. SPIKE FD. SOUTH R/W
OF U.R.S. 33

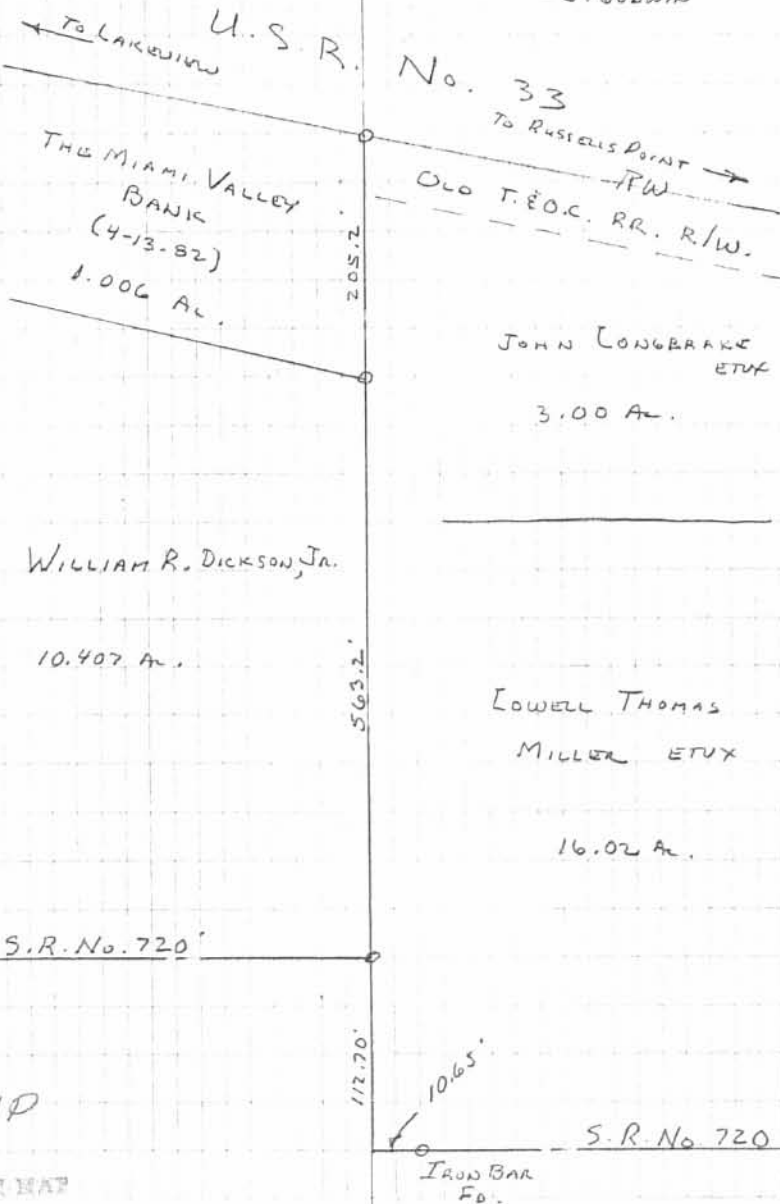
5+63.2 R.R. SPIKE FD., S.E. CORNER TO
BANK LOT.

P.K. NAILS SET EVERY 100'
R/W. STAKES ON WEST SIDE.

0+00 7/8" IRON BAR FD. BENT, STRAIGHTENED
AND RESET.

REF. F.B. 589 P. 30
DRAWING R - NO. 2159

8-24-84
D - D. GILBERT
K - C. DILL
- J. GODWIN



INDEXED ON MAP