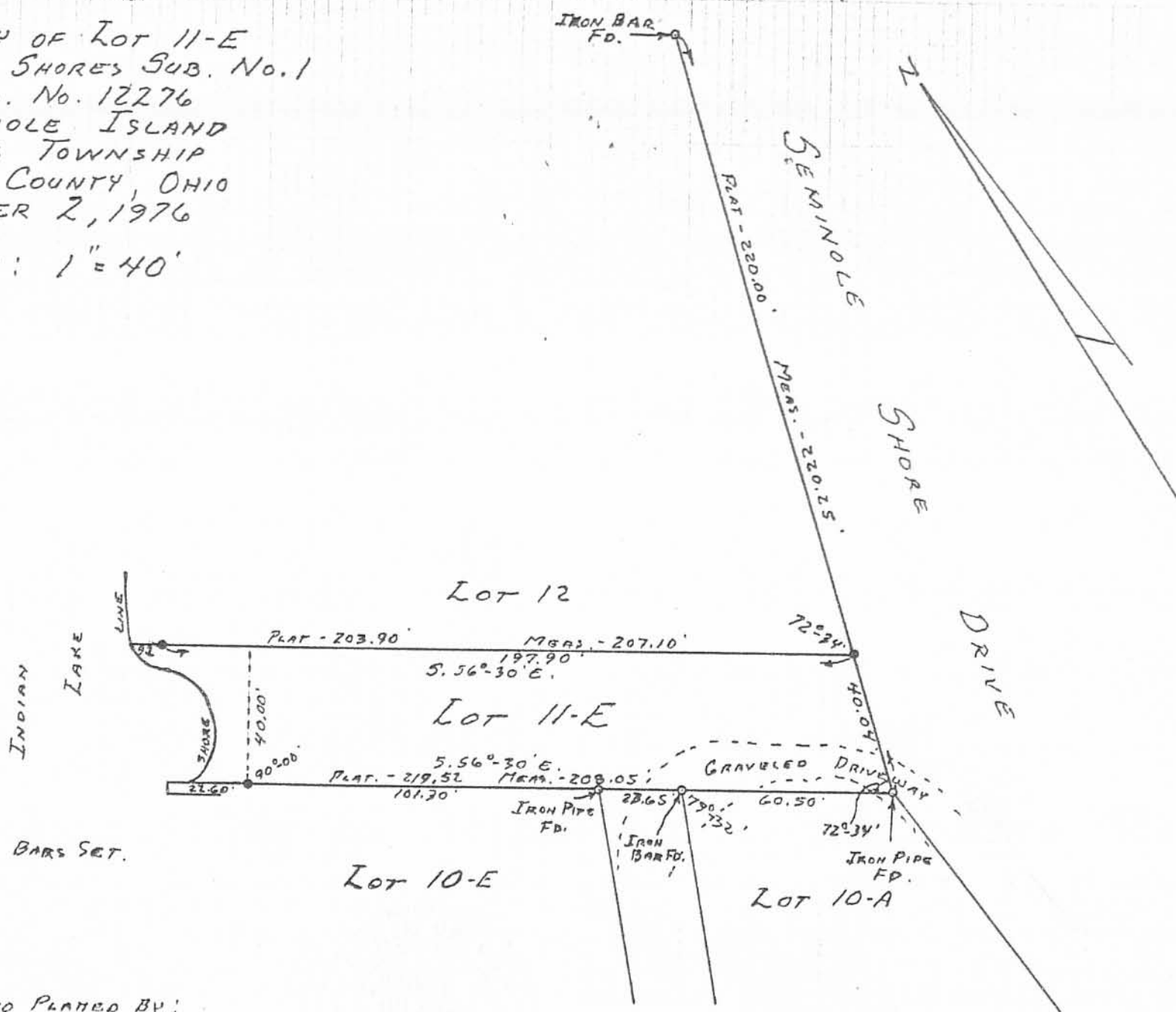


SURVEY OF LOT 11-E  
 SEMINOLE SHORES SUB. NO. 1  
 V.M.S. No. 12276  
 SEMINOLE ISLAND  
 STOKES TOWNSHIP  
 LOGAN COUNTY, OHIO  
 OCTOBER 2, 1976  
 SCALE: 1" = 40'



• -  $\frac{5}{8}$ "  $\phi$  IRON BARS SET.

SURVEYED AND PLATED BY:  
 DANIEL E. GILBERT, P.S.  
 REG. SUR. NO. 5402  
 1041 N. MAIN ST.  
 BELLEFONTAINE, OHIO 43311

REFERENCE:  
 SEMINOLE SHORES SUB. NO. 1  
 PLAT BOOK C-3 PAGE 33

7123 110

INDEXED ON MAP

Received 5-15-03 on job

Survey of Part of Lot No. E. 11

Seminole Shores Subdivision No. 1  
Seminole Island  
Stokes Township  
Logan County, Ohio  
V.M.S. 12276  
20 February 2003

The following described real estate is situated in V.M.S. 12276, Stokes Township, Logan County, Ohio. Said real estate being part of Lot No. E. 11 of Seminole Shores Subdivision Number One of Seminole Island (Plat Cabinet A, slide 251). Said part of Lot No. E. 11 is more particularly described as follows:

Beginning at a 3/4 inch I.D. iron pipe found on the South line of Lot No. E. 11 at the Northeast corner of Lot No. 10 E. as shown on the replatting of Lot No. 10 (plat cabinet A, slide 303).

Thence, with the North line of Lot No. 10 E., N. 57° - 01' - 36" W., 135.40 feet to a point in the waters of Indian Lake. The above described line passes through a 5/8 inch diameter capped rebar set for reference at 110.00 feet.

Thence, N. 38° - 06' - 44 E., 40.19 feet to a point. Said point being the southwest corner of Lot No. 12.

Thence, with the South line of Lot No. 12, S. 56° - 30' - 00" E., 124.99 feet to a 5/8 inch diameter capped rebar set on the extended West line of a 24 feet wide private driveway as shown on said replating of Lot No. 10. The above described line passes through a 5/8 inch diameter capped rebar set for reference at 10.00 feet.

Thence, with the aforesaid extended West line of a 24 feet wide private driveway, S. 23° - 02' - 30" W., 39.47 feet to the point of beginning.

The above described part of Lot No. E. 11 contains 0.118 acre, more or less.

Basis of bearing being the North line of Lot No. E. 11 (S. 56° - 30' - 00" E.) as shown on a 1976 survey of said lot (index no. R-7123).

Caps set on rebars set are stamped "Logan County Engineer".

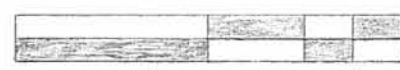
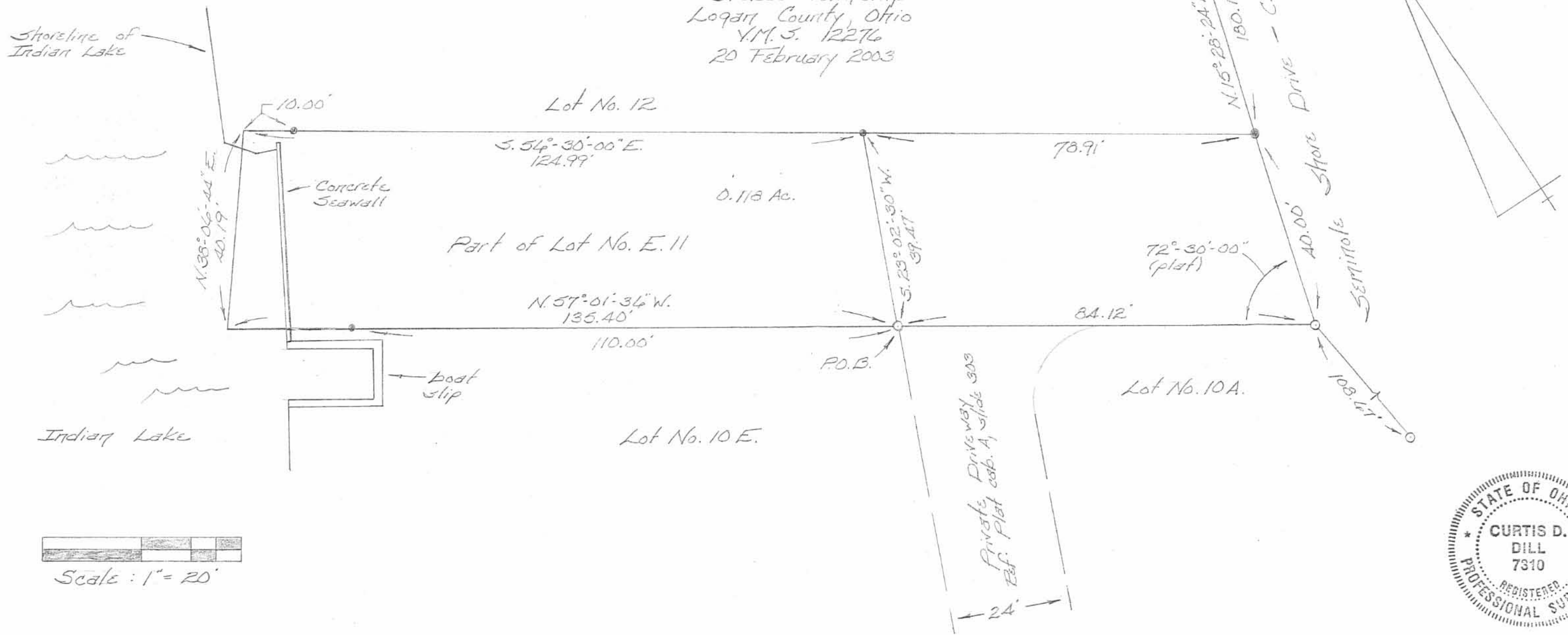
The above description is a new survey prepared from an actual field survey performed by the Logan County Engineer's Office on February 20, 2003.



*Curtis D. Dill*  
Curtis D. Dill, Deputy Surveyor  
Logan County Engineer's Office  
Registered Surveyor No. 7310

INDEXED ON MAP  
7/23/20

Stokes Township  
 Logan County, Ohio  
 V.M.S. 12276  
 20 February 2003



Scale: 1" = 20'



- Legend
- = 3/4" I.D. iron pipe fd.
  - = 9/8" dia. capped rebar set
  - ⊙ = 5/8" dia. rebar fd.
  - ⊗ = Concrete monument fd.

- References
- Plat of Seminole Stores Subdivision No. 1 (Plat Cabinet A, slide 201)
  - Plat of Lot No. 10 subdivision (Plat Cabinet A, slide 303)
  - 1976 Survey of Lot No. E. 11 (Index no. R-7123)

Basis of bearing being the North line of lot no. E. 11 (S. 54°-30'-00" E.) as shown on a 1976 Survey of said lot (Index No. R-7123).

Caps placed on rebars set are stamped "Logan County Engineer."

This plat represents a new survey prepared from an actual field survey performed by the Logan County Engineers Office on February 20, 2003.

*Curtis D. Dill*  
 Curtis D. Dill  
 Deputy Surveyor  
 Logan Co. Engineers Office  
 Registered Surveyor No. 7310

INDEXED ON MAP  
 7123 2P

PLAT NO 5-15-03 0A, 2004

Permanent Easement for Drainage Purposes

Part of Lot No. E. 11  
Seminole Shores Subdivision No. 1  
Seminole Island  
Stokes Township  
Logan County, Ohio  
V.M.S. 12276  
5 May 2003

The following described permanent easement for drainage purposes is situated in V.M.S. 12276, Stokes Township, Logan County, Ohio. Said permanent easement being part of Lot No. E. 11 of Seminole Shores Subdivision No. 1 on Seminole Island (Plat Cabinet A, slide 251). Said permanent easement being a 20.00 foot wide strip of real estate which is more particularly described as follows:

Beginning for reference at a 5/8 inch diameter rebar found at the Southeast corner of Lot No. 12.

Thence, with the South line of Lot No. 12, N. 56° - 30' - 00" W., 78.91 feet to a 5/8 inch diameter capped rebar set. Said rebar set being the True Point of Beginning for this easement description.

Thence, with the extended West line of a 24 foot wide private driveway as shown on the replatting of Lot No. 10 (plat cabinet A, slide 303), S. 23° - 02' - 30" W., 20.34 feet to a point.

Thence, parallel to the South Line of Lot No. 12, N. 56° - 30' - 00" W., 130.30 feet to a point in the waters of Indian Lake and on the West line of Lot No. E 11.

Thence, with the West line of Lot No. E 11, N. 38° - 06' - 44" E., 20.06 feet to a point. Said point being the Southwest corner of Lot No. 12.


Thence, with the South line of Lot No. 12, S. 56° - 30' - 00" E., 124.99 feet to the point of beginning. The above described line passes through a 5/8 inch diameter capped rebar set for reference at 10.00 feet.

The above described permanent easement for drainage purposes contains 0.059 acre, more or less.

Basis of bearing being the North line of Lot No. E. 11 (S. 56° - 30' - 00" E.) as shown on a 1976 survey of said lot (index no. R-7123).

Caps set on rebars set are stamped "Logan County Engineer".

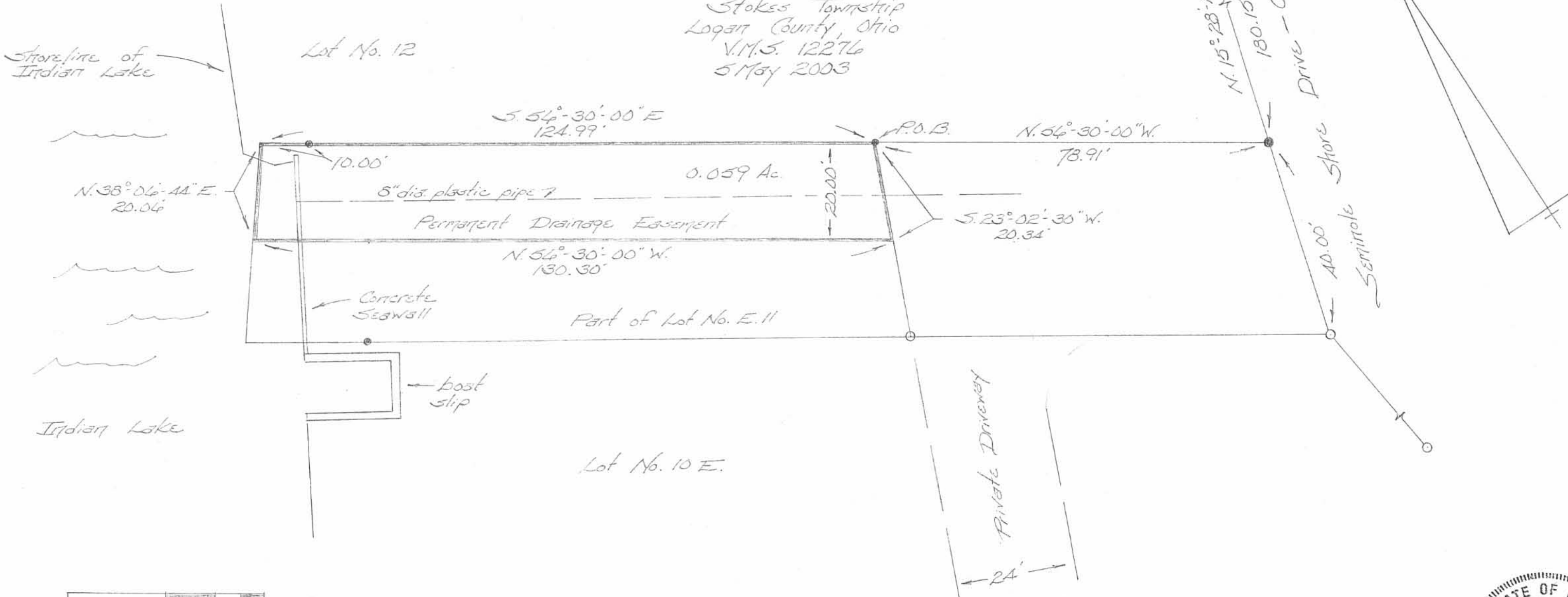
The above easement description was prepared from an actual field survey performed by the Logan County Engineer's Office on February 20, 2003.

  
Curtis D. Dill, Deputy Surveyor  
Logan County Engineer's Office  
Registered Surveyor No. 7310



INDEXED ON MAP  
7123 3D

Permanent Easement for Drainage Purposes  
 Part of Lot No. E.11  
 Seminole Stores Subdivision No. 1  
 Stokes Township  
 Logan County, Ohio  
 V.M.S. 12276  
 5 May 2003



Scale = 1" = 20'

Legend

- = 3/4" I.D. iron pipe fd.
- = 5/8" dia. capped rebar set
- ⊙ = 5/8" dia. rebar fd.
- ⊗ = Concrete monument fd.

References

- Plat of Lot No. 10 Subdivision (Plat Cabinet A, slide 303)
- Plat of Seminole Stores Subdivision No. 1 (Plat Cabinet A, slide 251)
- 1976 Survey of Lot No. E. 11 (Index no. R-7123)

INDEXED ON MAP  
 7123 3P

Basis of bearing being the North line of Lot No. E. 11 (S. 54°-30'-00" E.) as shown on a 1976 Survey of said lot (Index No. R-7123).

Caps placed on rebar set are stamped "Logan County Engineer."

This plat was prepared from an actual field survey performed by the Logan County Engineers Office on February 20, 2003.



*Curtis D. Dill*  
 Curtis D. Dill  
 Deputy Surveyor  
 Logan Co. Engineers Office  
 Registered Surveyor No. 7