

CHANNEL

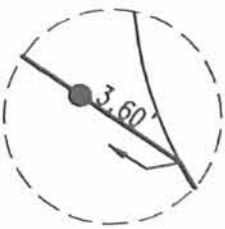
SURVEY OF LOT NO. 50
 MIDLAKE SUBD. NO. 3
 TECUMSEH ISLAND
 STOKES TOWNSHIP
 LOGAN COUNTY, OHIO
 MARCH 12, 1983

SURVEYED AND PLATTED BY:
 DANIEL E. GILBERT, P.S.
 REG. SUR. NO. 5402
 1041 N. MAIN ST.
 BELLEFONTAINE, OHIO 43311

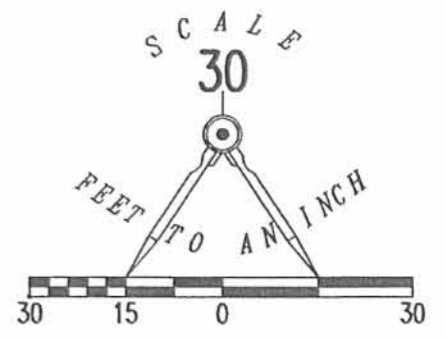
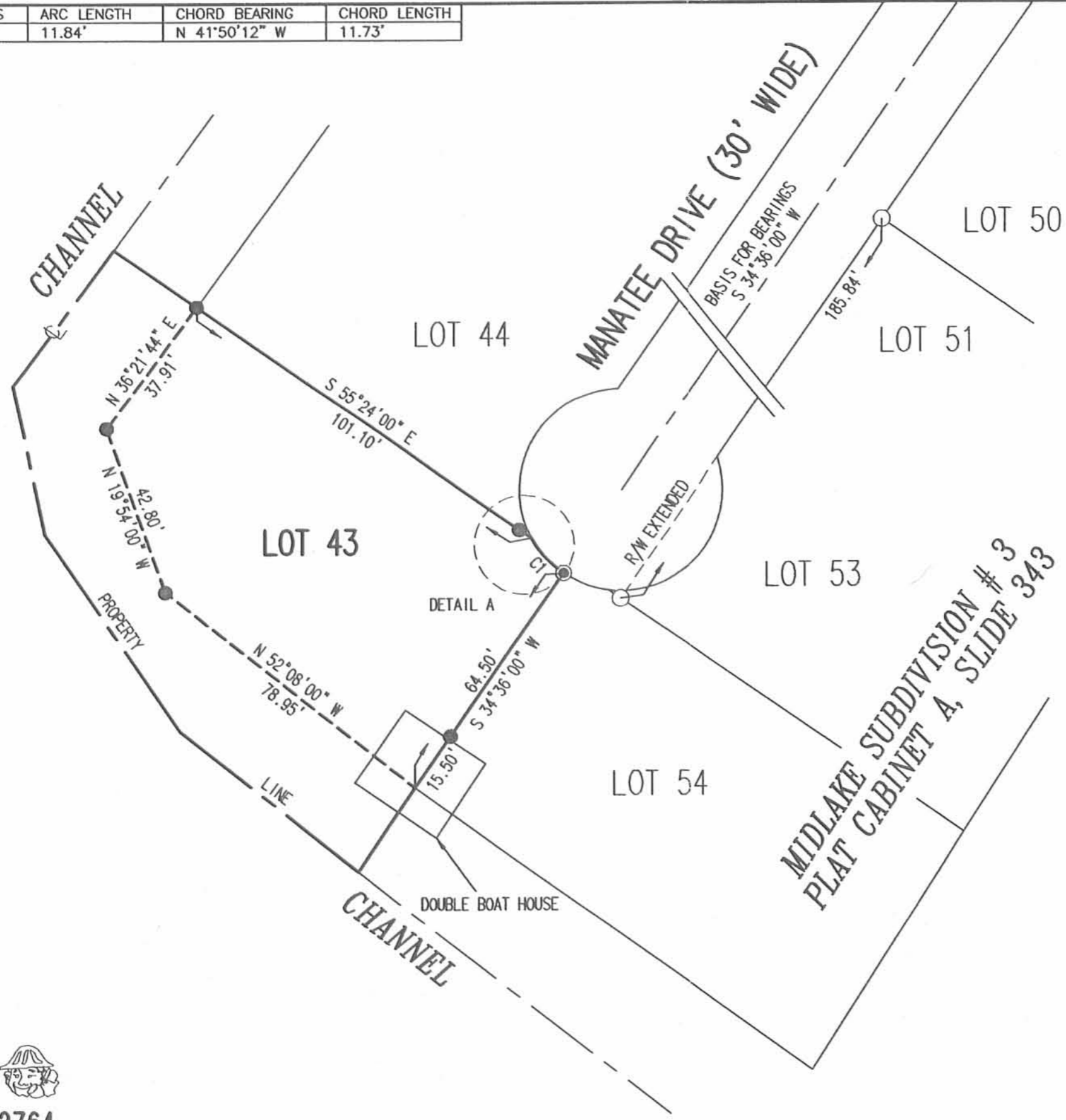
SCALE: 1" = 20'

REC'D 7-7-05 SMY OK

CURVE	DELTA ANGLE	RADIUS	ARC LENGTH	CHORD BEARING	CHORD LENGTH
C1	27°07'36"	25.00'	11.84'	N 41°50'12" W	11.73'



DETAIL A
NOT TO SCALE



- LEGEND
- 5/8 INCH IRON ROD SET
 - ⊙ MAG NAIL SET
 - 5/8 INCH IRON ROD FOUND

A RETRACEMENT SURVEY OF
 LOT NUMBER 43
 MIDLAKE SUBDIVISION # 2
 PLAT CABINET A, SLIDE 327
 STOKES TOWNSHIP
 LOGAN COUNTY, OHIO

SURVEYED BY:

[Signature]
 JEFFREY I. LEE
 PROFESSIONAL SURVEYOR 6359
 JULY 5, 2005

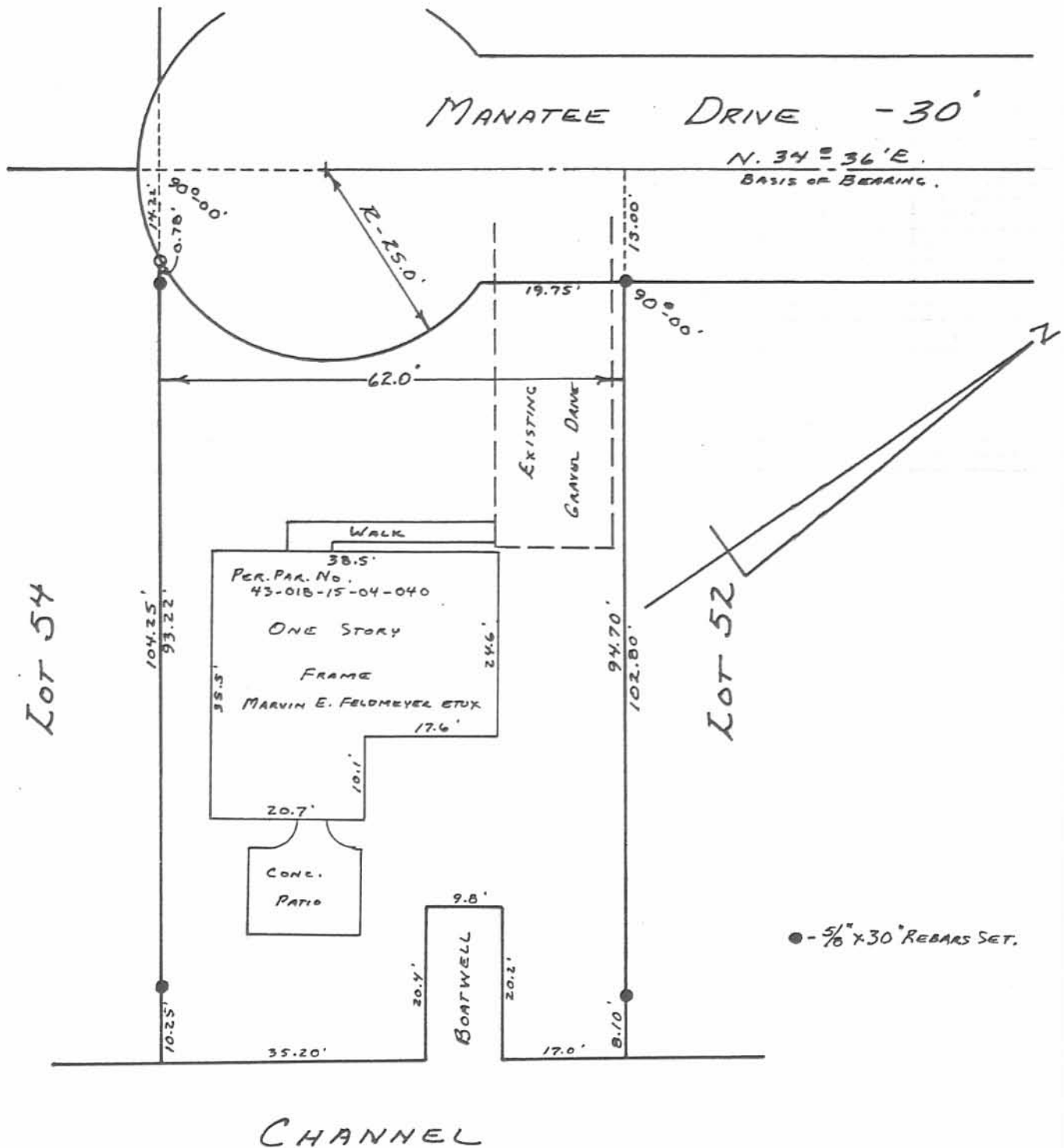


COPYRIGHT 2005 BY:
 LEE SURVEYING & MAPPING CO., INC.
 117 North Madriver Street
 BELLEFONTAINE, OHIO 43311
 (937) 593-7335

ADW D0705 4058065 L-4058065-3

2 WORKING DAYS
BEFORE YOU DIG
 CALL TOLL FREE **800-362-2764**
 OHIO UTILITIES PROTECTION SERVICE

INDEXED ON MAP
 6824 28



N. 34° 36' E.
BASIS OF BEARING.

Lot 54

Lot 52

CHANNEL

● - 5/16" x 30" REBARS SET.

INDEXED ON MAP
6824 3P



SURVEY OF LOT No. 53
MIDLAKE SUBD. No. 3
TECUMSEH ISLAND
STOKES TOWNSHIP
LOGAN COUNTY, OHIO
SEPTEMBER 6, 1988

SCALE: 1" = 20'

Daniel E. Gilbert
DANIEL E. GILBERT, P.S.
REG. SUR. NO. 5402
400 N. PARK ST.
BELLEFONTAINE, OHIO
43311

088-070