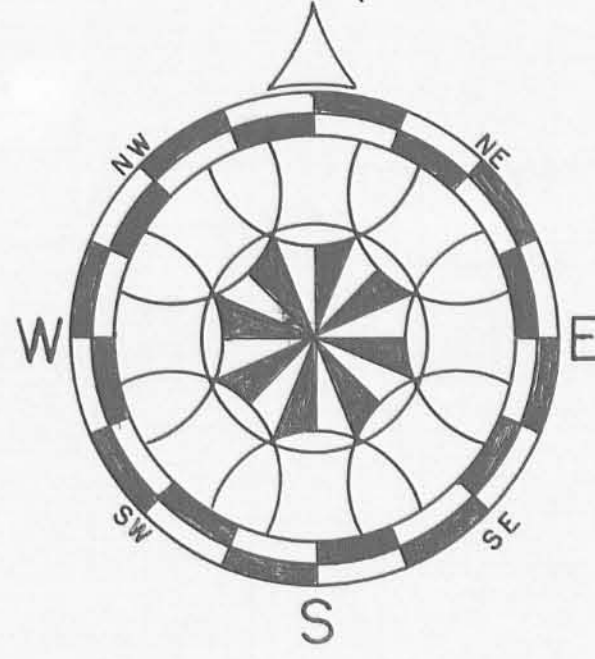


ANCHOR LODGE CONDOMINIUM  
 PART OF LOT No. 11  
 SHAWNEE ISLAND  
 STOKES TOWNSHIP  
 LOGAN COUNTY, OHIO  
 1981

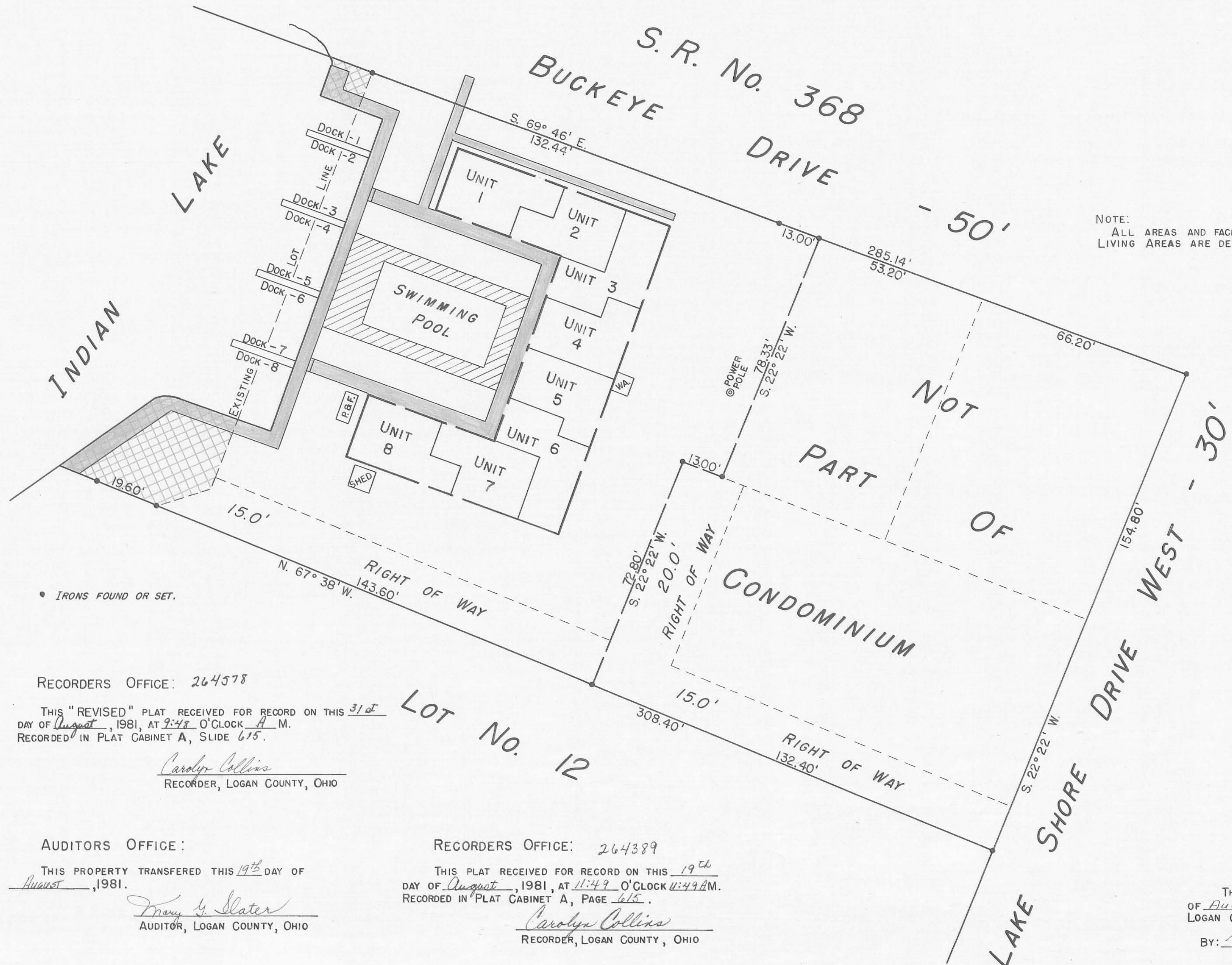
SCALE: 1" = 20'



NOTE:  
 AREA NOT PART OF LOT No. 11. PART OF VACATED PARK.  
 NO APPARENT TITLE FOUND.



NOTE:  
 ALL AREAS AND FACILITIES NOT DESIGNATED AS  
 LIVING AREAS ARE DESIGNATED AS COMMON AREAS.



I HEREBY CERTIFY THAT THIS DRAWING WAS REVISED  
 TO SHOW APPARENT VACATED PARK ON AUGUST 31, 1981.

*Daniel E. Gilbert*  
 DANIEL E. GILBERT, P.S.  
 REG. SUR. NO. 5402

I HEREBY CERTIFY THAT THIS DRAWING ACCURATELY  
 REPRESENTS THE BUILDING AND OTHER IMPROVEMENTS  
 ON WHAT IS TO BE KNOWN AS "ANCHOR LODGE"  
 CONDOMINIUM.

*Daniel E. Gilbert*  
 DANIEL E. GILBERT, P.S.  
 REG. SUR. NO. 5402  
 BELLEFONTAINE, OHIO

I HEREBY CERTIFY THAT THIS DRAWING ACCURATELY  
 REPRESENTS THE BUILDING AND OTHER IMPROVEMENTS  
 ON WHAT IS TO BE KNOWN AS "ANCHOR LODGE"  
 CONDOMINIUM.



*Glendale H. Zell*  
 GLENDALE H. ZELL  
 REG. ARCH. NO. 3849  
 BELLEFONTAINE, OHIO

RECORDERS OFFICE: 264578

THIS "REVISED" PLAT RECEIVED FOR RECORD ON THIS 31<sup>st</sup>  
 DAY OF August, 1981, AT 9:47 O'CLOCK A.M.  
 RECORDED IN PLAT CABINET A, SLIDE 675.

*Carolyn Collins*  
 RECORDER, LOGAN COUNTY, OHIO

AUDITORS OFFICE:

THIS PROPERTY TRANSFERRED THIS 19<sup>th</sup> DAY OF  
 August, 1981.

*Mary G. Slater*  
 AUDITOR, LOGAN COUNTY, OHIO

RECORDERS OFFICE: 264389

THIS PLAT RECEIVED FOR RECORD ON THIS 19<sup>th</sup>  
 DAY OF August, 1981, AT 11:49 O'CLOCK 11:49 A.M.  
 RECORDED IN PLAT CABINET A, PAGE 675.

*Carolyn Collins*  
 RECORDER, LOGAN COUNTY, OHIO

THIS PLAT CHECKED THIS 19<sup>th</sup> DAY  
 OF August, 1981.  
 LOGAN COUNTY ENGINEERS OFFICE.

BY: *Daniel E. Gilbert, T.M.D.*

REC'D 10-23-95 SWJ 19K

REFERENCES

LOGAN COUNTY ENGINEER'S FILES:  
PLAT CABINET A. SLIDE 233  
R-2303: R-2304: R-2733: R-4280  
R-4597: R-6658: J-7A  
F.B. INSKEEP F.B. 12, PG. 40



BUCKEYE DRIVE (50')  
STATE ROUTE 368

ANCHOR LODGE CONDOMINIUMS  
PART I, PART OF LOT 11  
0.042 AC PART 11  
VOL. 393, PG. 306

LOT 11

0.128 ACRE

RICHARD D. McPOMMELL  
PART OF LOT 11  
O.R. 113, PG. 07

ROBERT L. FRY  
PART OF LOT 11  
O.R. 251, PG. 495

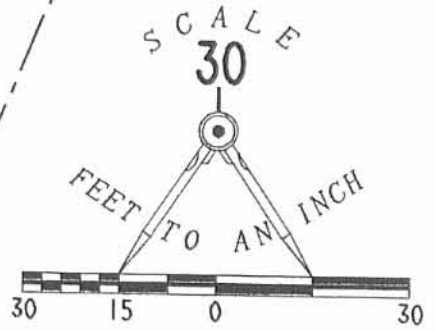
LYNN E. BARGER  
PART OF LOT 12  
VOL. 406, PG. 786

LOT 12

LEGEND

- 5/8" IRON ROD FOUND
- 1" METAL PIPE FOUND
- 5/8" IRON ROD SET

LAKE SHORE DRIVE (30')



RETRACEMENT SURVEY OF THE  
JUDITH ELAINE WYATT TRACT  
PART OF LOT 11 OF SHAWNEE ISLAND  
PLAT CABINET A. SLIDE 233  
OFFICIAL RECORD 113, PAGE 79  
STOKES TOWNSHIP  
LOGAN COUNTY, OHIO

INDEXED ON MAP  
10658 1P



SURVEYED BY:

JEFFREY I. LEE  
PROFESSIONAL SURVEYOR 6359  
OCTOBER 20, 1995

2 WORKING DAYS  
**BEFORE YOU DIG**  
CALL TOLL FREE **800-362-2764**  
OHIO UTILITIES PROTECTION SERVICE.

ORIGINAL STAMP IN GREEN

COPYRIGHT 1995 BY:  
**LEE SURVEYING & MAPPING CO.**  
143 East Columbus Avenue  
BELLEFONTAINE, OHIO 43311  
(513) 593-7335

D 267 JWYATT

L-2338-4