

SURVEY OF LOTS 397-400, 403-405, 470-472, 476, 477,  
 554-557, CHIPPewa PARK No. 1  
 STOKES TOWNSHIP, LOGAN COUNTY, OHIO  
 JULY 27, 1981 SCALE: 1" = 40'

- - P.K. NAILS IN ROADS
- - 3/8" IRON BARS ON CORNERS.

6656 IP

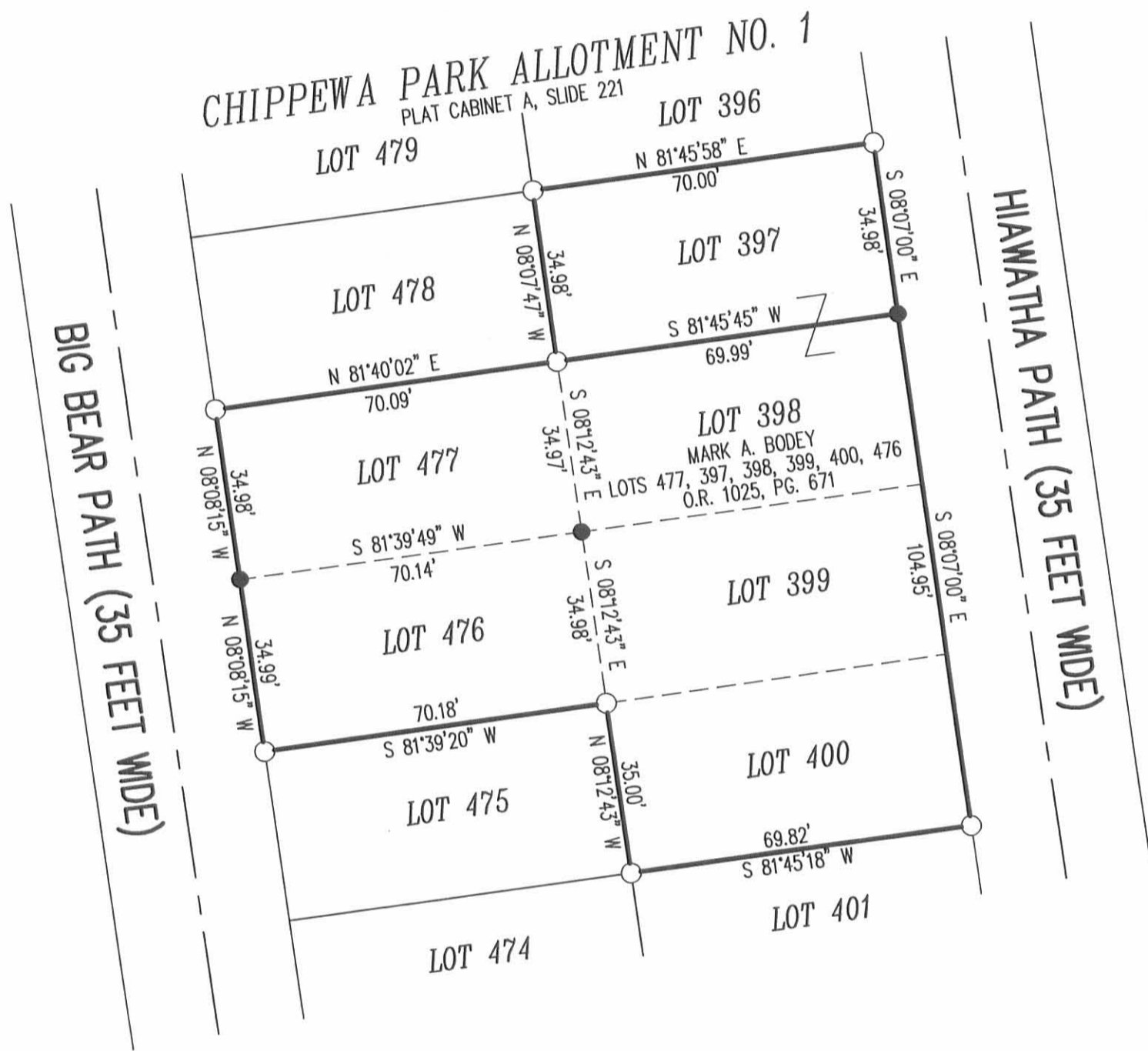
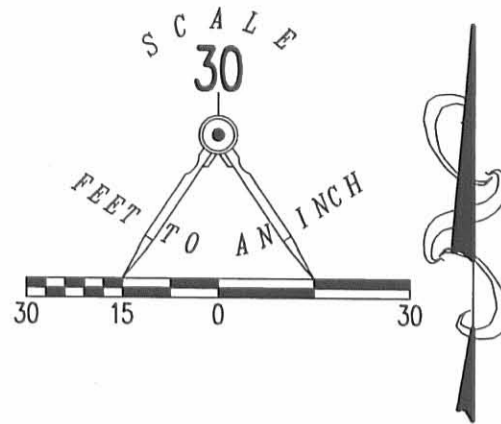
INDEXED ON MAP

SURVEYED AND PLATTED BY:  
 DANIEL E. GILBERT, P.S.  
 REC. SUR. NO. 5402

REC'D 4-18-12 SMY 04

LEGEND

- 5/8 INCH IRON ROD SET WITH PLASTIC I.D. CAP STAMPED "LSM7437"
- 5/8 INCH IRON ROD FOUND IN CONCRETE



RETRACEMENT SURVEY OF THE  
 MARK A. BODEY  
 LOTS 477, 397, 398, 399, 400, 476  
 OFFICIAL RECORD 1025, PAGE 671  
 CHIPPEWA PARK  
 PLAT CABINET A, SIDE 221  
 STOKES TOWNSHIP  
 LOGAN COUNTY, OHIO

SURVEYED BY:



*William K. Bruce*  
 WILLIAM K. BRUCE  
 PROFESSIONAL SURVEYOR 7437  
 APRIL 12, 2012

COPYRIGHT 2012 BY:  
**LEE SURVEYING & MAPPING CO., INC.**  
 117 North Madriver Street  
 BELLEFONTAINE, OHIO 43311  
 (937) 593-7335  
 WWW.LSMINC.US  
 surveys@lsminc.us

2 WORKING DAYS  
**BEFORE YOU DIG**  
 CALL TOLL FREE **800-362-2764**  
 OHIO UTILITIES PROTECTION SERVICE

INDEXED ON MAP  
 6656 2P

ORIGINAL STAMP IN GREEN