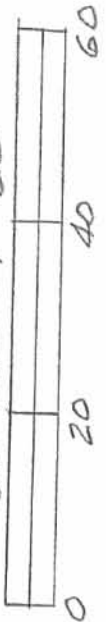


SURVEY OF LOTS  
 43-44-45-46-65-66  
 AVONDALE No. 2  
 STOKES TOWNSHIP  
 LOGAN COUNTY, O.  
 FEB. 8, 1969  
 SCALE 1"=40'

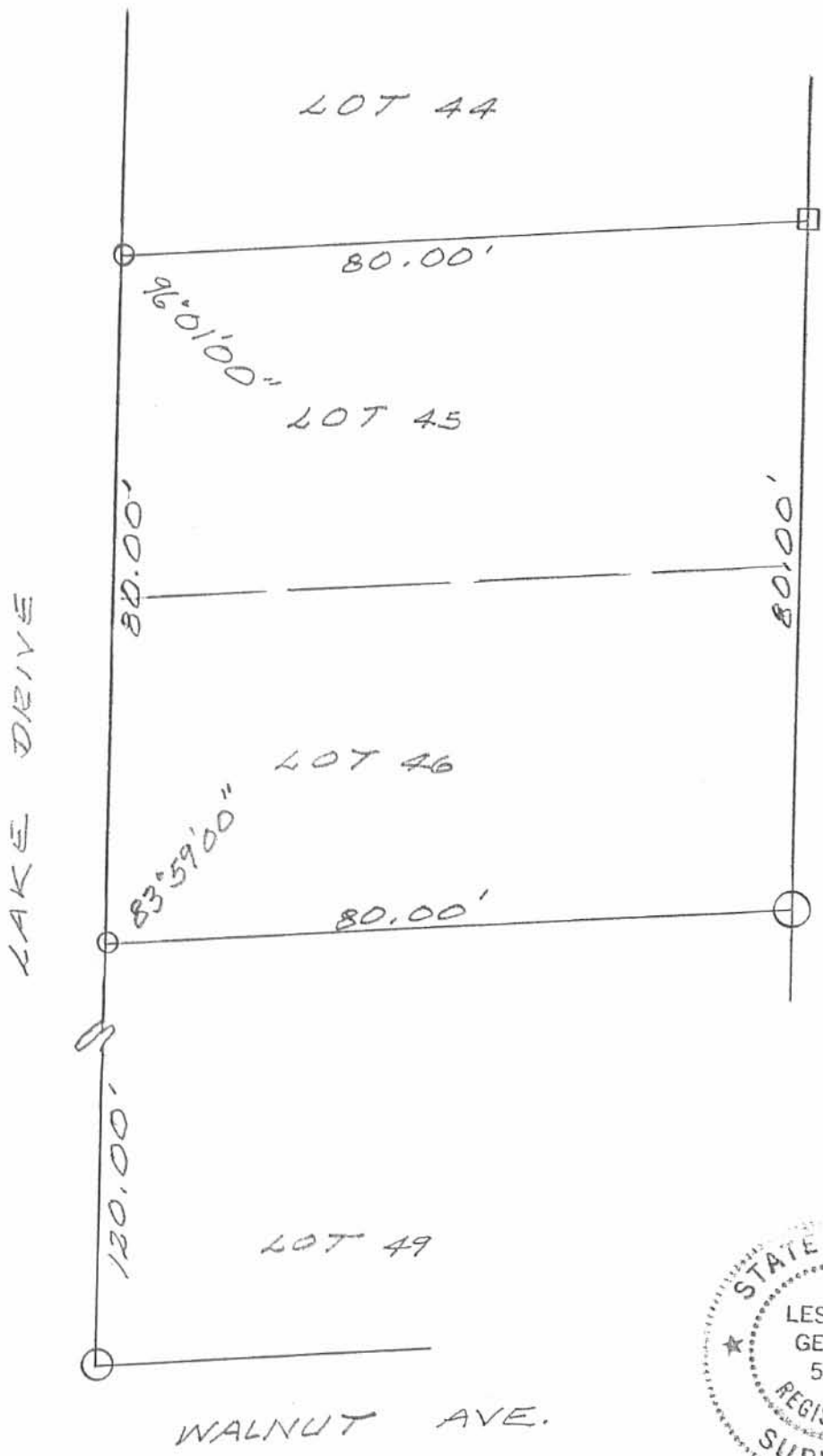
INDEXED ON MAP  
 6532 1P

DAN L. DODSON  
 REG. SURVEYOR 4270  
 BELLEFONTAINE, O.

SURVEY OF LOTS 45 & 46 OF  
 AYONDALE PARK ALLOTMENT NO 2,  
 STOKES TOWNSHIP LOGAN COUNTY,  
 OHIO FOR DIANE NELSON,  
 OCTOBER 12, 1994  
 SCALE: 1"=20'



- LEGEND:
- = 5/8" IRON BAR SET
  - = 5/8" IRON BAR FOUND
  - (with horizontal lines) = 2" STEEL POST FD.
  - (with vertical lines) = 1" IRON BAR FD.



*Leslie H. Geeslin*  
 LESLIE H. GEE  
 RUSH SYLVANIA,  
 PA 513-468-2

INDEXED ON MAP  
 6532 2P

REC'D 3-25-98 SMY BK ✓



SURVEY OF LOTS 63 & 64,  
 AVONDALE NO 2, STOKES  
 TOWNSHIP, LOGAN COUNTY,  
 OHIO.

MARCH 24, 1998  
 SCALE: 1" = 20'

LEGEND:

- = 2" STEEL POST FD
- = 5/8" IRON BAR FD
- = 5/8" IRON BAR SET



WILSON MAP  
 6532 3P

*Leslie H. Geeslin*  
 LESLIE H. GEESLIN  
 RUSHLYANIA, OHIO  
 PH 937-468-2793

AVONDALE NO 2

INDEXED ON MAP  
6532

2-8-69  
35°  
Norton  
Artis

