

INDEXED ON MAP
~~248~~ 6573 IP

SURVEY OF LOTS 203 & 239
 AYONDALE PARK ALLOT. No. 3
 STOKES TOWNSHIP
 LOGAN COUNTY, OHIO
 JUNE 21, 1969
 SCALE 1" = 30'

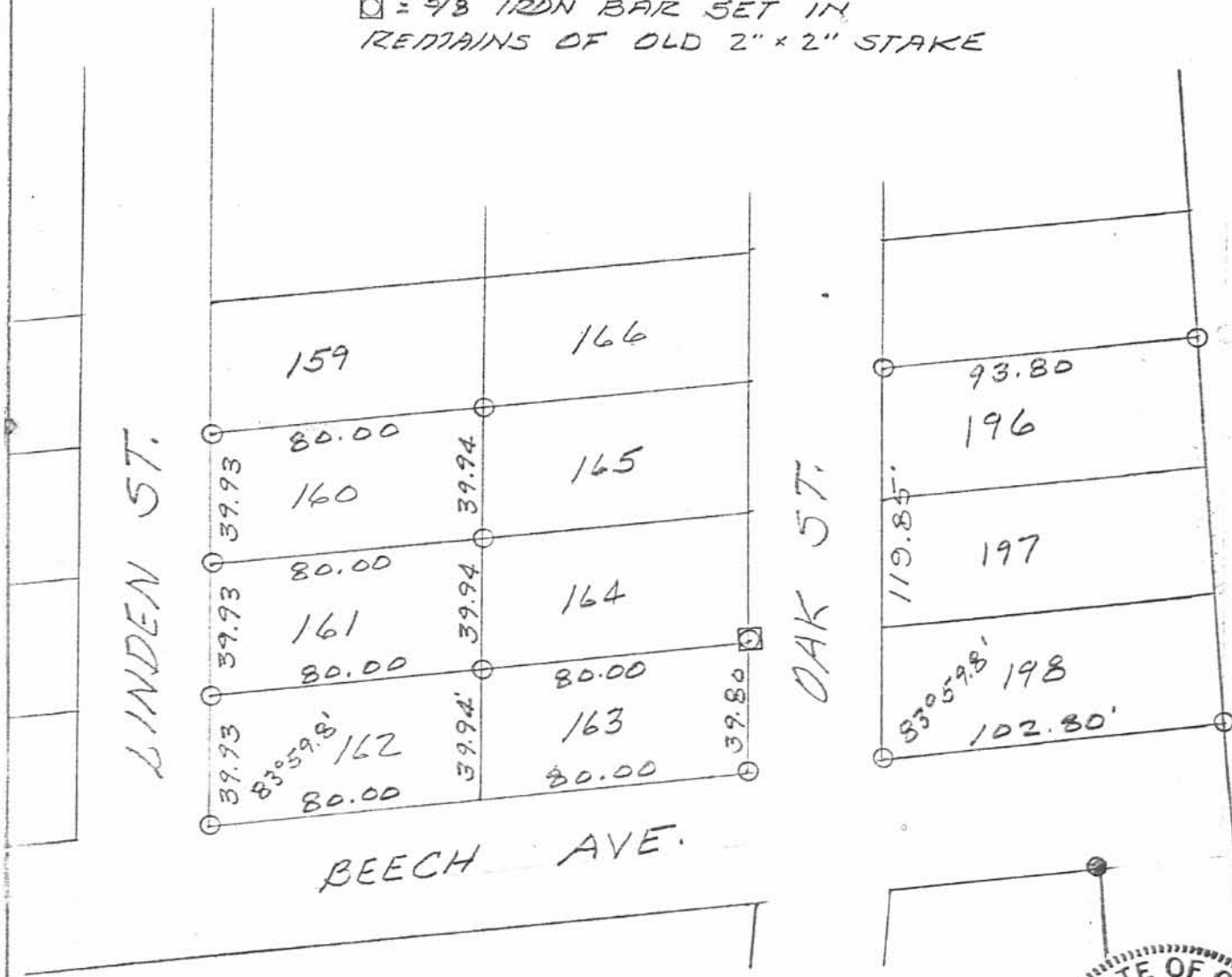
DAN L. DODSON
 REG. SURVEYOR 4270
 BELLEFONTAINE, O.

SURVEY OF LOTS 160 - 163
 AND LOTS 196 - 198 IN
 AVONDALE PARK ALLOTMENT
 NO. 4 - SEPTEMBER, 1980
 SCALE: 1" = 50'



LEGEND:

- = 5/8" IRON BAR SET
- = 5/8" IRON BAR FD.
- ◻ = 5/8" IRON BAR SET IN REMAINS OF OLD 2" x 2" STAKE



REFERENCE:
 CO. ENGINEER PLAT J-53

6513 2P

INDEXED ON MAP



LESLIE H. GEESLIN
 RUSHSVLVANIA, OHIO