

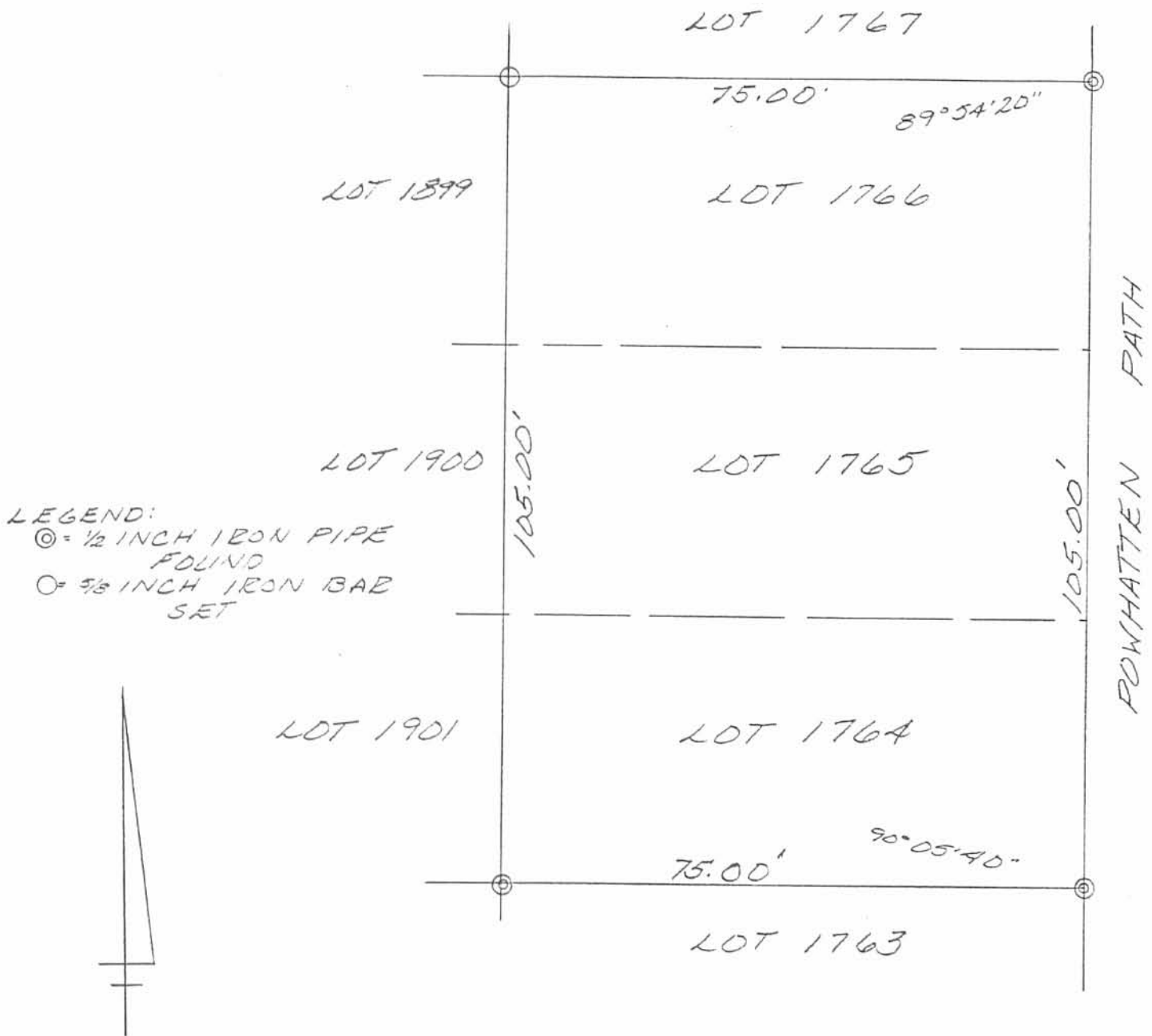
6329 1P

INDEXED ON MAP

HOMER E. REEDY SURVEY  
 LOTS 1764, 1765, 1766  
 CHIPPEWA PARK 'No. 3'  
 STOKES TOWNSHIP  
 LOGAN COUNTY, OHIO  
 JULY 28, 1979

SCALE: 1" = 40'

SURVEYED AND PLATTED BY:  
 DANIEL E. GILBERT, P.S.  
 REG. SUR. NO. 5402  
 1041 N. MAIN ST.  
 BELLEFONTAINE, OHIO 43311



LEGEND:  
 ⊙ = 1/2 INCH IRON PIPE FOUND  
 ○ = 5/8 INCH IRON BAR SET



SURVEY OF LOTS 1764, 1765, & 1766  
 IN CHIPPEWA PARK N° 3, VIRGINIA  
 MILITARY SURVEY 12276, STOKES  
 TOWNSHIP, LOGAN COUNTY, OHIO  
 JUNE 17, 1991  
 SCALE: 1" = 20'

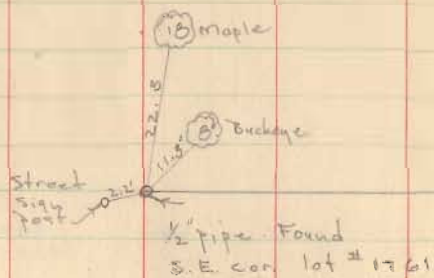


INDEXED ON MAP  
 6329 2P

*Leslie H. Geeslin*  
 LESLIE H. GEESLIN  
 RUSHSVLVANIA, OH  
 (513) 468-2793

Lot 1767  
Chippewa Park # 13

Dodson FB 2

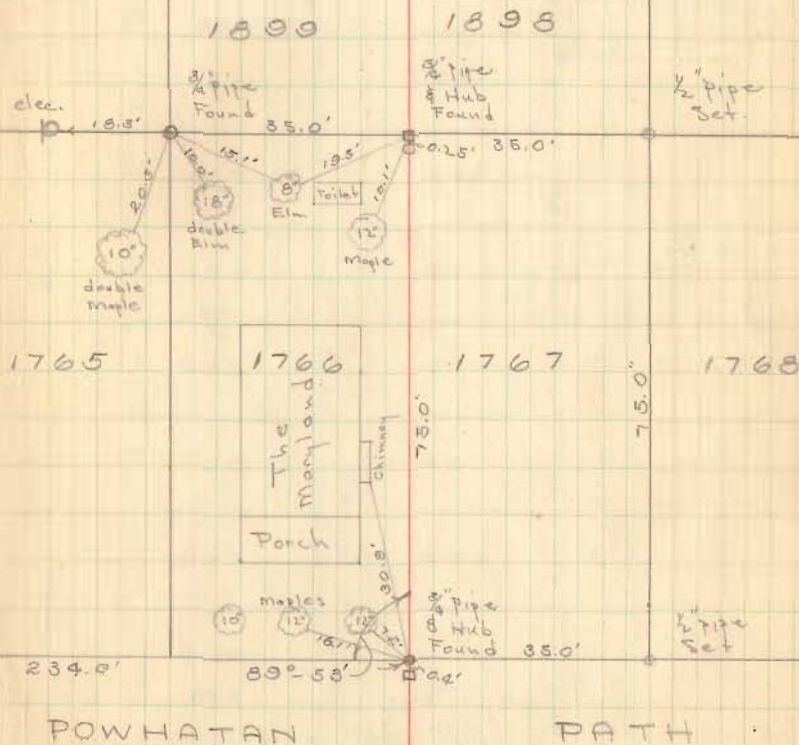


INDEXED ON MAP  
6329

D. E. Dodson  
T. L. Richardson

May 15, 1954  
70°

3



**LEGAL DESCRIPTION**

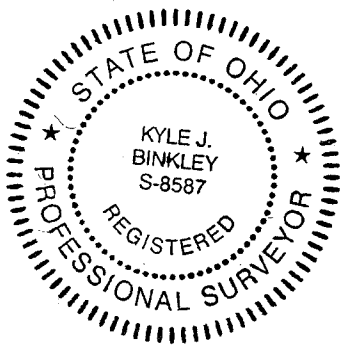
Being the S 1/2 of Lot #1899 & all of Lots #1900, 1901 & 1902 of Chippewa Park No. 3 (P.C. A, Slide 235) and being located in V.M.S. 12276, Stokes Township, Logan County (Prior Deeds Referenced in O.R. 881, Pg. 869 & O.R. 1295, Pg. 40), more particularly described as follows:

Beginning at an existing #5 Rebar at the SW corner of said Lot #1902 & the NW corner of Lot# 1904; thence the following courses:

1. N 06°-45'-04" W with the W lines of Lots #1902, 1901, 1900 & 1899 and being the E line of Shawnee Path, 122.46' to a #5 Rebar set at the NW corner of the S 1/2 of said Lot #1899;
2. N 82°-17'-55" E with the N line of the S 1/2 of said Lot #1899, 71.42' to a #5 Rebar set at the NE corner of the S 1/2 of said Lot #1899 & in the W line of Lot #1766;
3. S 06°-45'-04" E with the E line of said Lots #1899, 1900, 1901 & 1902 and the W line of Lots #1766, 1765, 1764 & 1763, 122.46' to a #5 Rebar set at the SE corner of said Lot #1902 & the N line of Lots #1903 & 1904;
4. S 82°-17'-55" W with the S line of said Lot #1902, 71.42' to the POINT OF BEGINNING.

The above described parcel contains 0.201 acres, more or less, subject to all legal highways and easements of record.

The system of bearings for this legal description is based on the Ohio State Plane-North Coordinate System NAD83 (2011). This legal description and accompanying plat represent an actual boundary survey completed under the direct supervision of Kyle J. Binkley, P.S. #8587 on April 30, 2021. All markers called for above are in place.



*[Handwritten Signature]*

INDEXED ON MAP  
6329

