

● - 5/8" Ø IRON BARS SET.

413

INDEXED ON MAP
62501P

DAVIS SURVEY
LOTS 410, 411 & 412
CHIPPEWA PARK No. 1
STOKES TOWNSHIP
LOGAN COUNTY, OHIO
DECEMBER 2, 1978

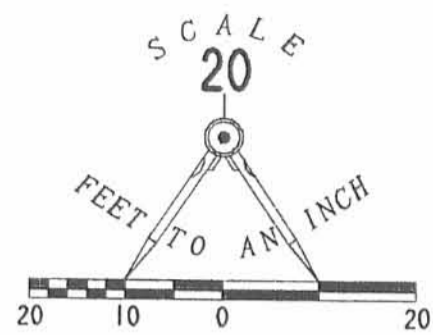
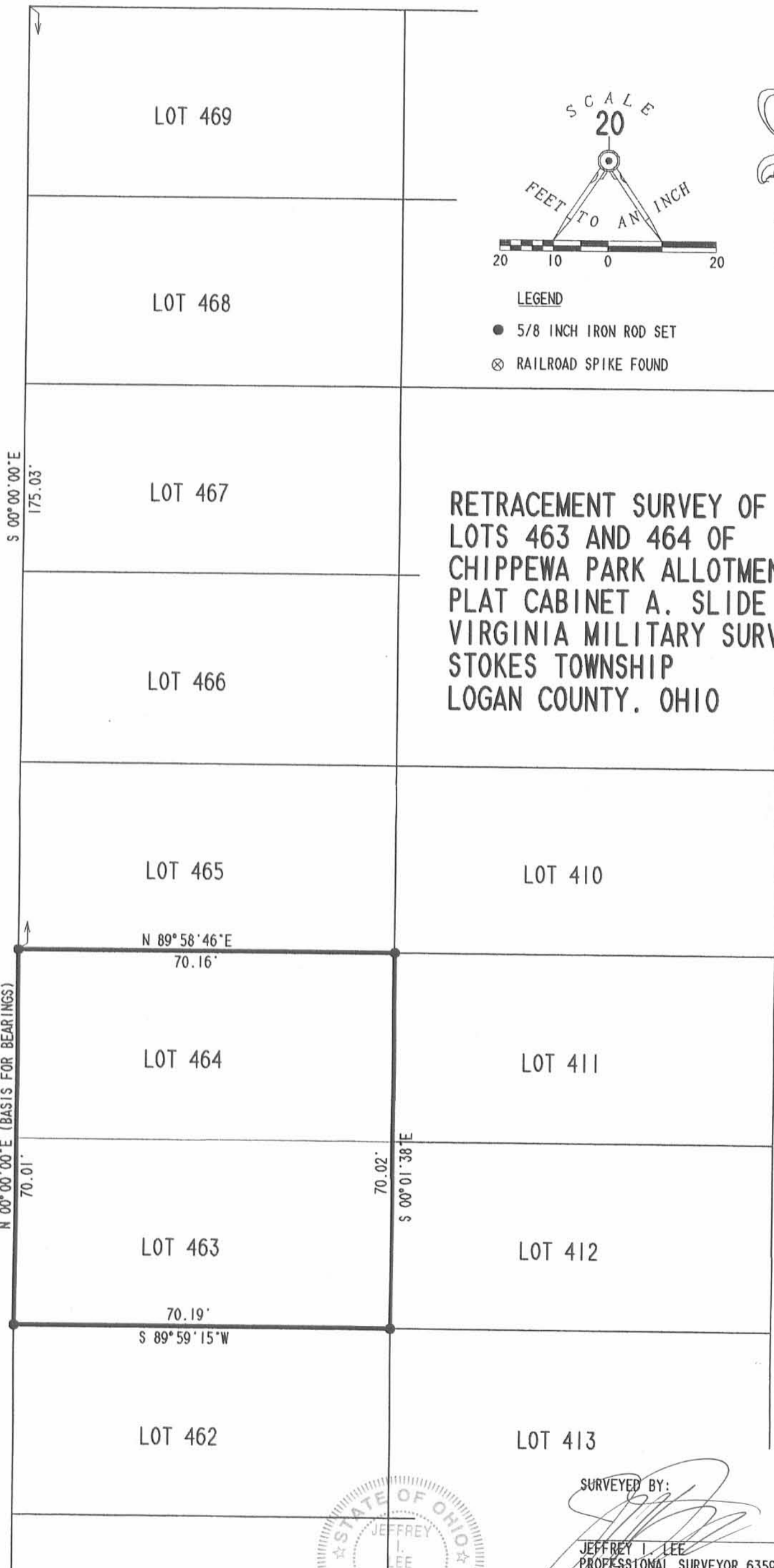
SCALE: 1" = 40'

SURVEYED AND PLATTED BY:
DANIEL E. GILBERT, P.S.
REG. SUR. NO. 5402
1041 N. MAIN ST.
BELLFONTAINE, OHIO 43311

BLUE JACKET PATH (35')

HIAWATHA PATH (35')

BIG BEAR PATH (35')



- LEGEND
- 5/8 INCH IRON ROD SET
 - ⊗ RAILROAD SPIKE FOUND

RETRACEMENT SURVEY OF
 LOTS 463 AND 464 OF
 CHIPPEWA PARK ALLOTMENT
 PLAT CABINET A. SLIDE 223
 VIRGINIA MILITARY SURVEY 12276
 STOKES TOWNSHIP
 LOGAN COUNTY, OHIO



SURVEYED BY:
Jeffrey I. Lee
 JEFFREY I. LEE
 PROFESSIONAL SURVEYOR 6359
 NOVEMBER 15, 1999

COPYRIGHT 1999 BY:
 LEE SURVEYING & MAPPING CO., INC.
 117 North Madriver Street
 BELLEFONTAINE, OHIO 43311
 (937) 593-7335

2 WORKING DAYS
BEFORE YOU DIG
 CALL TOLL FREE **800-362-2764**
 OHIO UTILITIES PROTECTION SERVICE.

LOT 461
 6250 2P

ORIGINAL STAMP IN GREEN