

Received 6-16-96 OK JCH

LESLIE H. GEESLIN

REGISTERED SURVEYOR 5248

P. O. BOX 274

RUSHSVLVANIA, OHIO 43347

TELEPHONE: (513) 468-2793

10 FOOT EASEMENT

The following described 10 foot easement situated in the State of Ohio, County of Logan, Township of Stokes being on the south side of Lot 17 of Chippewa Park and more particularly described as follow:

Being a 10 foot wide by 75 feet easement along the entire south side of Lot 17.



Leslie H. Geeslin

INDEXED ON MAP
6234 1D1

Received 6-6-96 OK JCH

LESLIE H. GEESLIN

REGISTERED SURVEYOR 5248

P. O. BOX 274

RUSHSVLVANIA, OHIO 43347

TELEPHONE: (513) 468-2793

10 FOOT EASEMENT

The following described 10 foot easement situated in the State of Ohio, County of Logan, Township of Stokes being on the north side of Lot 18 of Chippewa Park and more particularly described as follow:

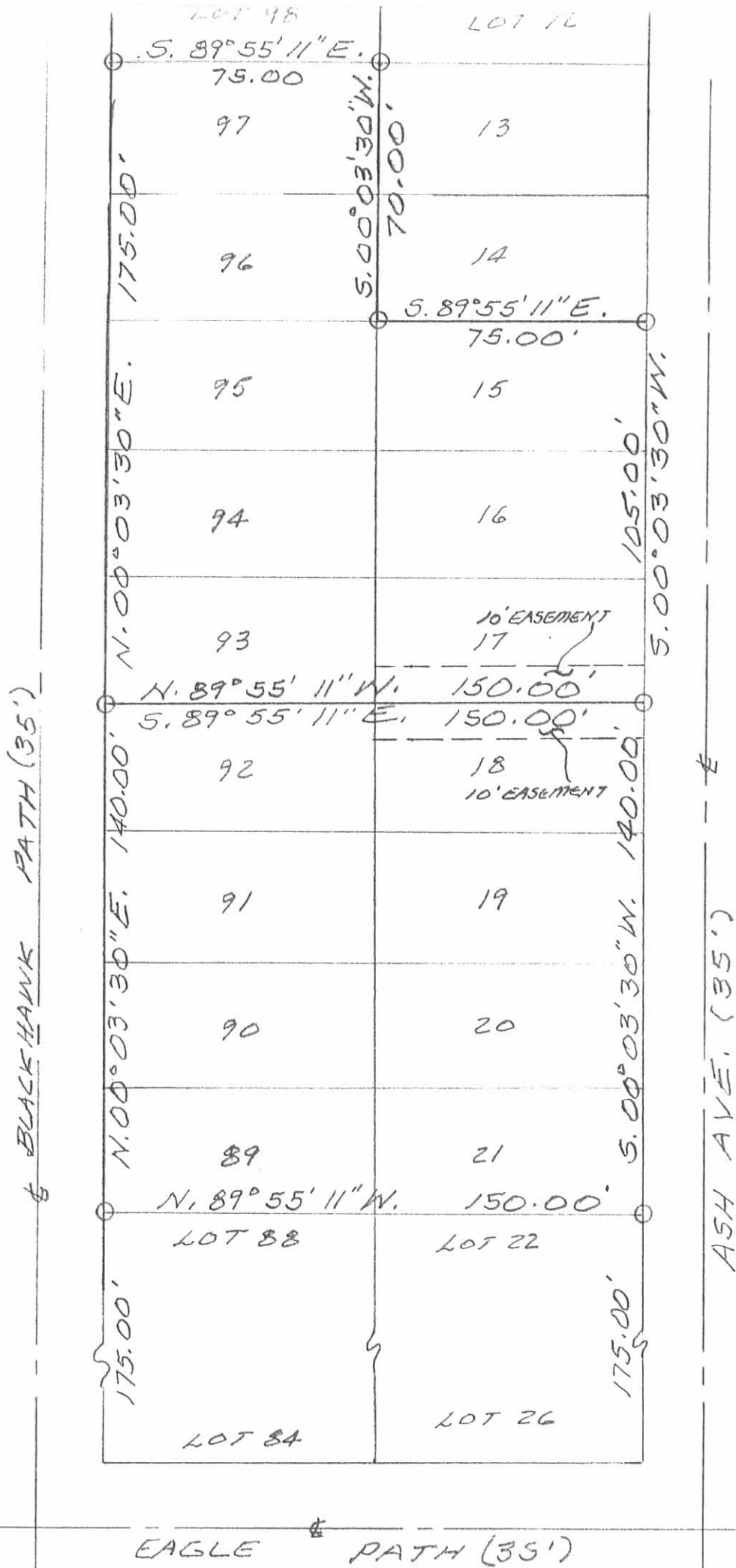
Being a 10 foot wide by 75 feet easement along the entire north side of Lot 18.



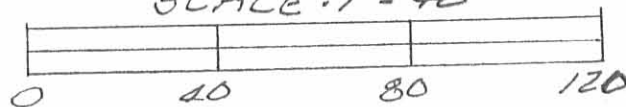
Leslie H. Geeslin

INDEXED ON MAP
6234 1D-2

LEGEND:
 O = 5/8" IRON BAR SET

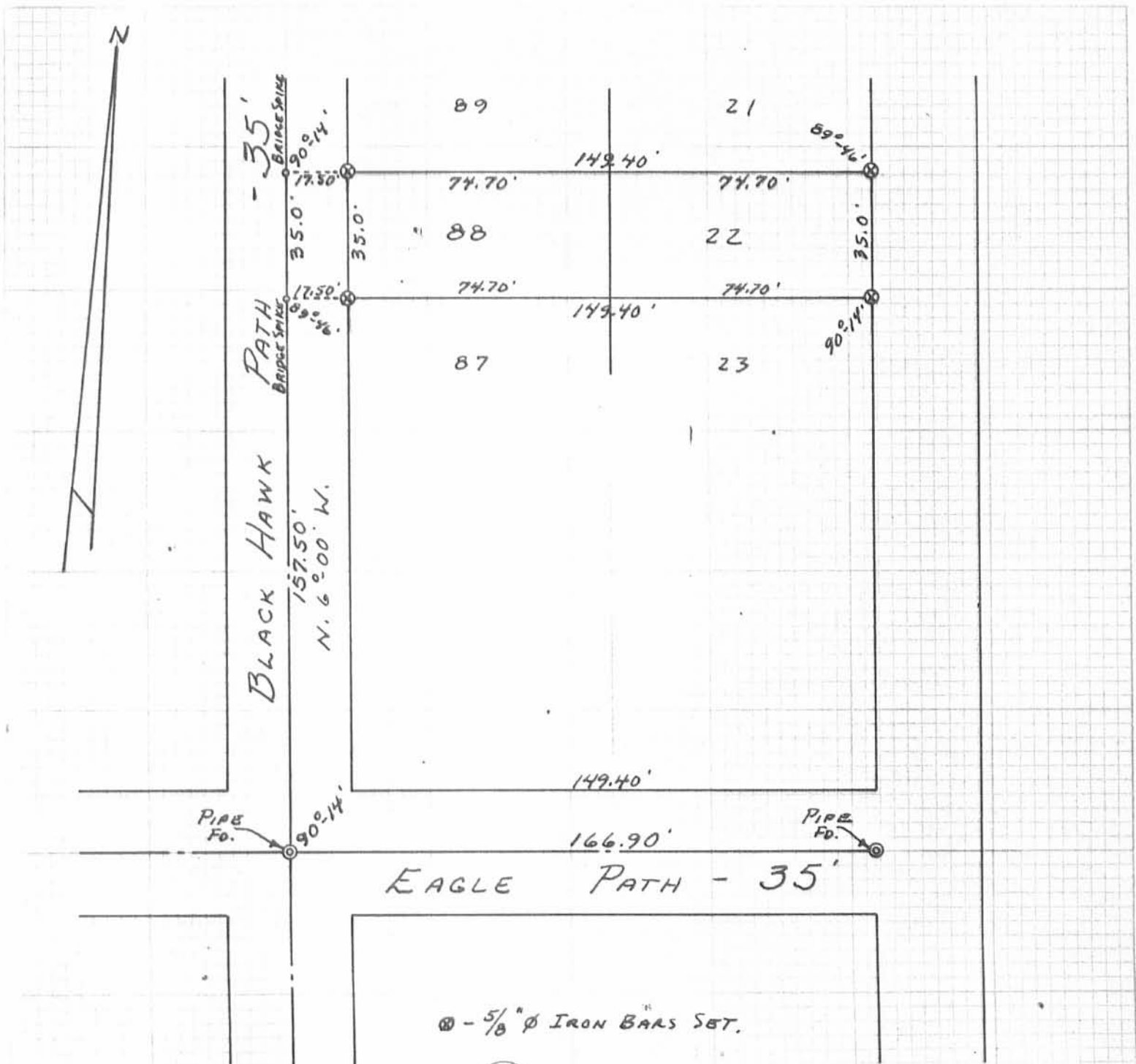


STATE & OHIO-COUNTY OF LOGAN-TWP & STOKES
 SURVEY OF LOTS 15-16-17-93-94-
 95-96 & 97 OF CHIPPEWA PARK INTO
 ONE PARCEL AND LOTS 18-19-20-
 21-89-90-91 & 92 INTO ONE PARCEL.
 MAY 28, 1996
 SCALE: 1" = 40'



Leslie H. Geeslin
 LESLIE H. GEESLIN
 RUSHsylvania, OHIO
 PH 513-468-2793

INDEXED ON MAP
 6234 IP



REFERENCE:
 CHIPPEWA PARK No. 1
 PLAT BOOK B VOLUME 2
 PAGES 126-127

6234 2P

INDEXED ON MAP

FRATER SURVEY
 LOTS 22-88
 CHIPPEWA PARK No. 1
 STOKES TOWNSHIP
 LOGAN COUNTY, OHIO
 OCTOBER 14, 1978

SURVEYED AND PLATTED BY:
 DANIEL E. GILBERT, P.S.
 REG. SUR. No. 5402
 1041 N. MAIN ST.
 BELLEFONTAINE, OHIO 43311

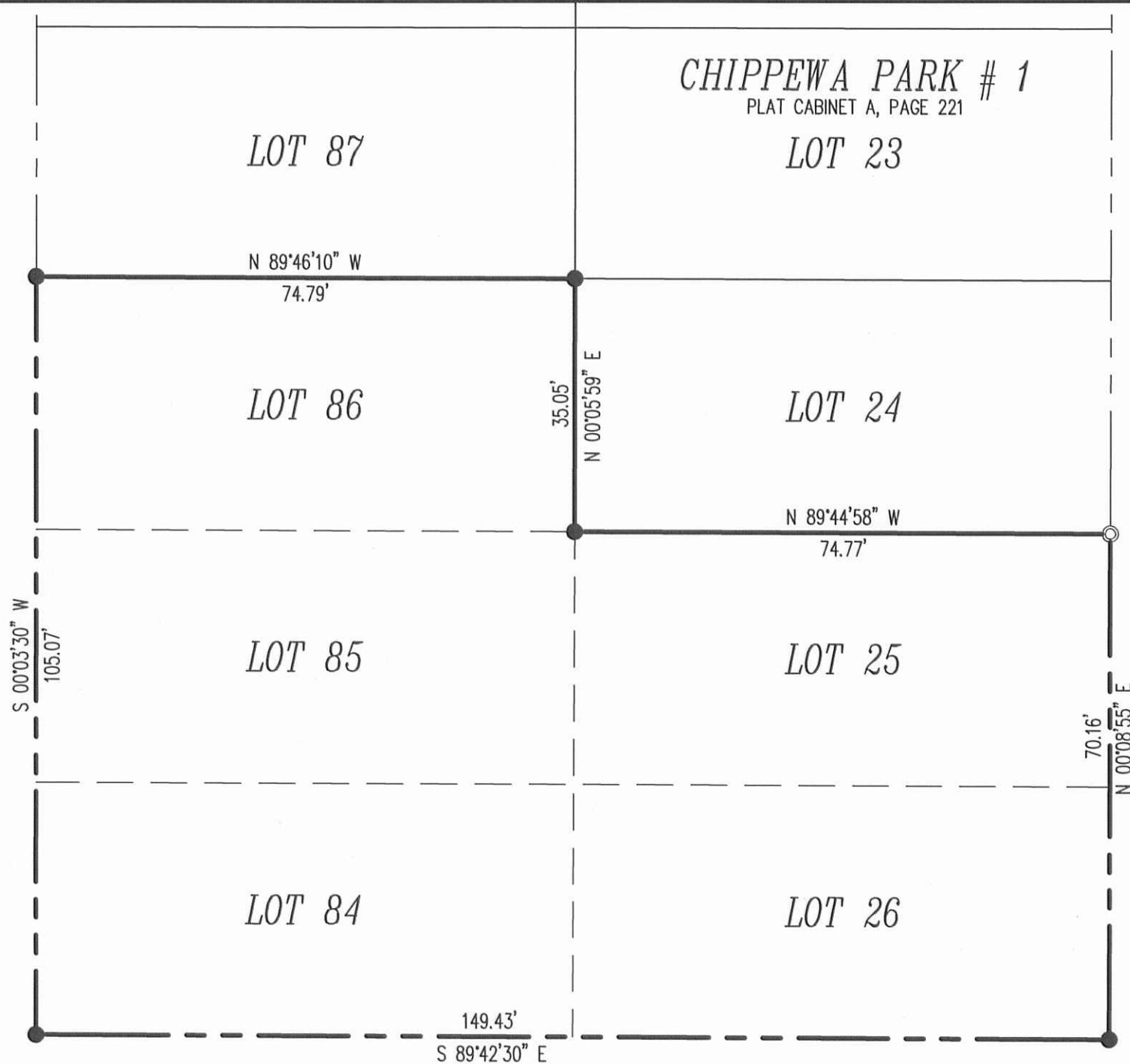
SCALE: 1" = 40'

12-12-14

APPROVED

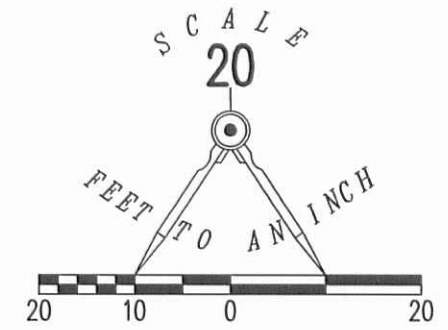
2 WORKING DAYS
BEFORE YOU DIG
CALL TOLL FREE **800-362-2764**
OHIO UTILITIES PROTECTION SERVICE

BLACKHAWK PATH (35')



EAGLE PATH (35')

ASH AVENUE (35')



LEGEND

- 5/8 INCH IRON ROD SET WITH PLASTIC I.D. CAP STAMPED "LSM7437"
- ⊙ 3/4 INCH IRON PIPE FOUND

RETRACEMENT SURVEY OF
LOTS 25, 26, 84, 85 AND 86
CHIPPEWA PARK # 1
PLAT CABINET A, SLIDE 221
STOKES TOWNSHIP
LOGAN COUNTY, OHIO

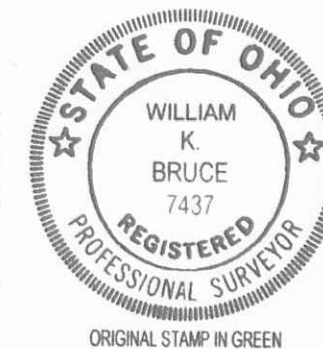
SURVEYED BY:

William K. Bruce

WILLIAM K. BRUCE
PROFESSIONAL SURVEYOR 7437
DECEMBER 8, 2014

COPYRIGHT 2014 BY:
LEE SURVEYING & MAPPING CO., INC.

117 North Madriver Street
BELLEFONTAINE, OHIO 43311
(937) 593-7335
WWW.LSMINC.US
surveys@lsminc.us



ORIGINAL STAMP IN GREEN

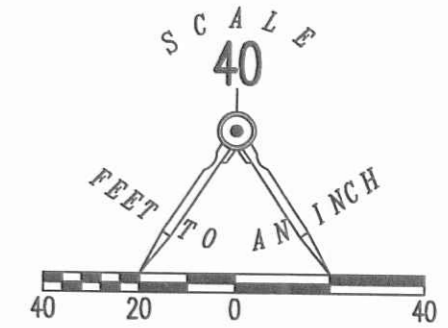
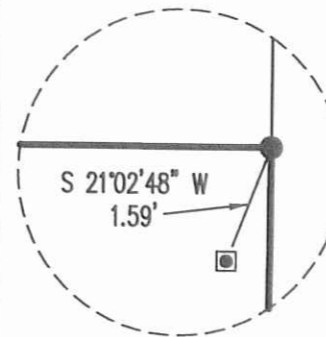
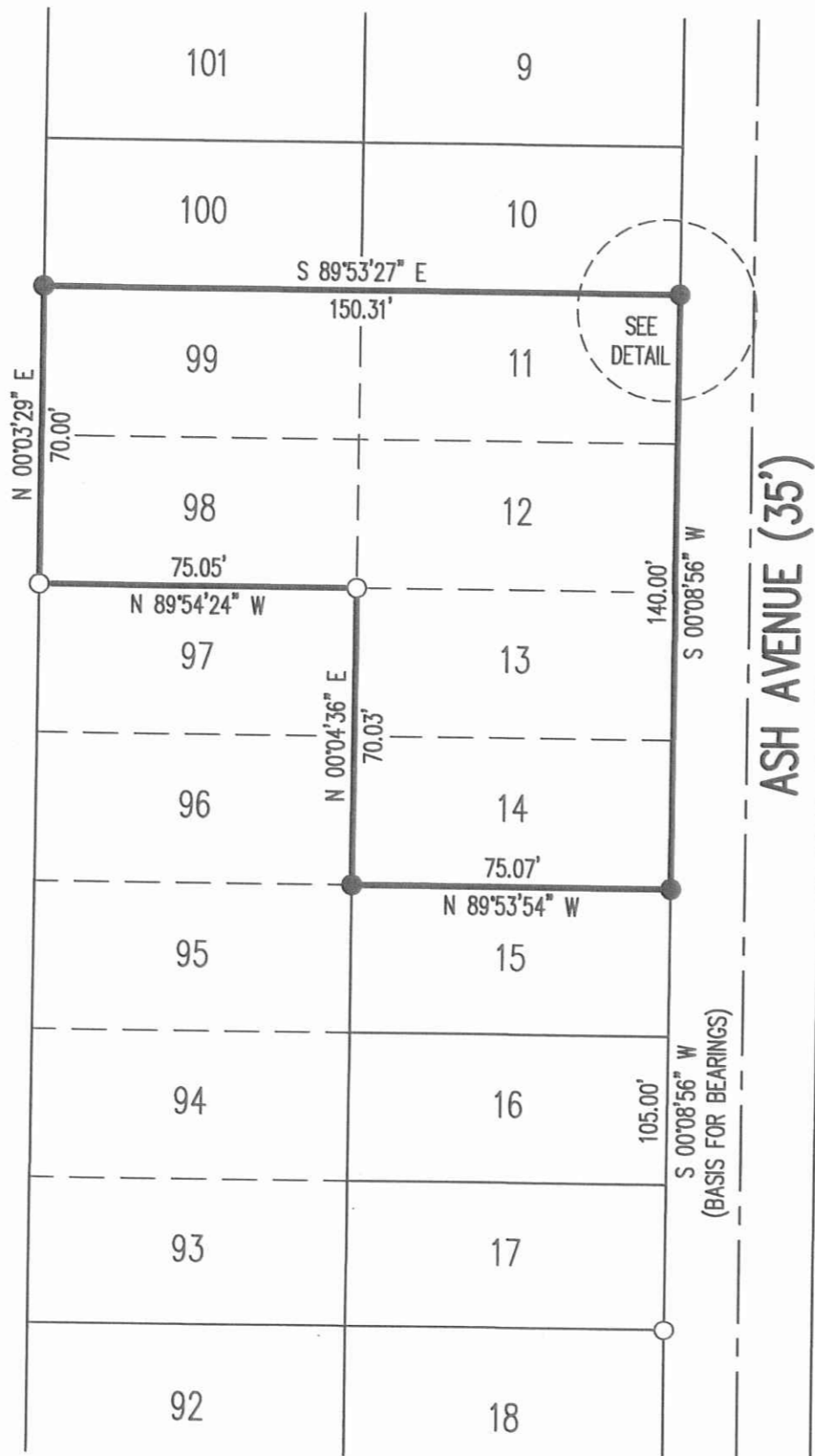
ADW D1214 58501214 L-5850-3

INDEXED ON MAP
6234 3P

9-16-15

APPROVED

BLACKHAWK PATH (35')



- LEGEND:
- 3/4 INCH SQUARE IRON BAR FOUND
 - 5/8 INCH IRON ROD FOUND
 - 5/8 INCH IRON ROD SET WITH PLASTIC I.D. CAP STAMPED "LSM 7437"

RETRACEMENT SURVEY OF THE
WILLIAM H. PAGE
LOTS 11, 12, 13, 14, 98, AND 99
CHIPPEWA PARK
PLAT CABINET A, SLIDE 221
OFFICIAL RECORD 1090, PAGE 285
STOKES TOWNSHIP
LOGAN COUNTY, OHIO

SURVEYED BY:
William K. Bruce
WILLIAM K. BRUCE
PROFESSIONAL SURVEYOR 7437
SEPTEMBER 11, 2015



COPYRIGHT 2015 BY:
LEE SURVEYING & MAPPING CO., INC.
117 North Madriver Street
BELLEFONTAINE, OHIO 43111
(937) 593-7335
WWW.LSMINC.US
surveys@lsminc.us
KSS D0815 59940815 L-5994-3

2 WORKING DAYS
BEFORE YOU DIG
CALL TOLL FREE 800-362-2764
OHIO UTILITIES PROTECTION SERVICE

INDEXED ON MAP
6234 4P