

Received 8-17-93  
OK gch

**SURVEY FOR STOKES TOWNSHIP TRUSTEES**

Part of Lot 225  
Wise Allotment of Island View  
Stokes Township  
Logan County, Ohio  
V.M.S. 12276  
August, 1993

The following described real estate is situated in Stokes Township, Logan County, Ohio and is part of V.M.S. 12276. Said parcel is a triangular piece out of the Southwest corner of Lot 225 found in Wise Allotment of Island View (Plat Cabinet A, Slide 193, Logan County Recorder's Office) and is more particularly described as follows:

Beginning at a 5/8 inch diameter capped iron found at the Southwest corner of Lot 225 in Wise Allotment of Island View. Said iron being the true point of beginning for this survey.

Thence with the West line of Lot 225 which is also the East line of Ash Avenue, N.12°-47'-16" W., 31.00 feet to a 5/8 inch diameter capped iron set.

Thence S.57°-44'-38" E., 43.87 feet to a 5/8 inch diameter capped iron set on the South line of Lot 225.

Thence with the South line of Lot 225 which is also the North line of Collingwood Avenue, S.77°-18'-00" W., 31.00 feet to the point of beginning.

The above described tract contains 0.011 acre more or less.

This description represents a new survey performed by the Logan County Engineer's Office.

All angles and distances were measured in the field.

All distances are in feet and decimal parts of a foot.

Caps on irons set are stamped "Logan County Engineer".

Basis of bearing being Collingwood Avenue (S.77°-18'-00" W.) as shown on the plat of Wise Allotment of Island View (Plat Cabinet A, Slide 193, Logan County Recorder's Office).

Field work was completed in March, 1993.

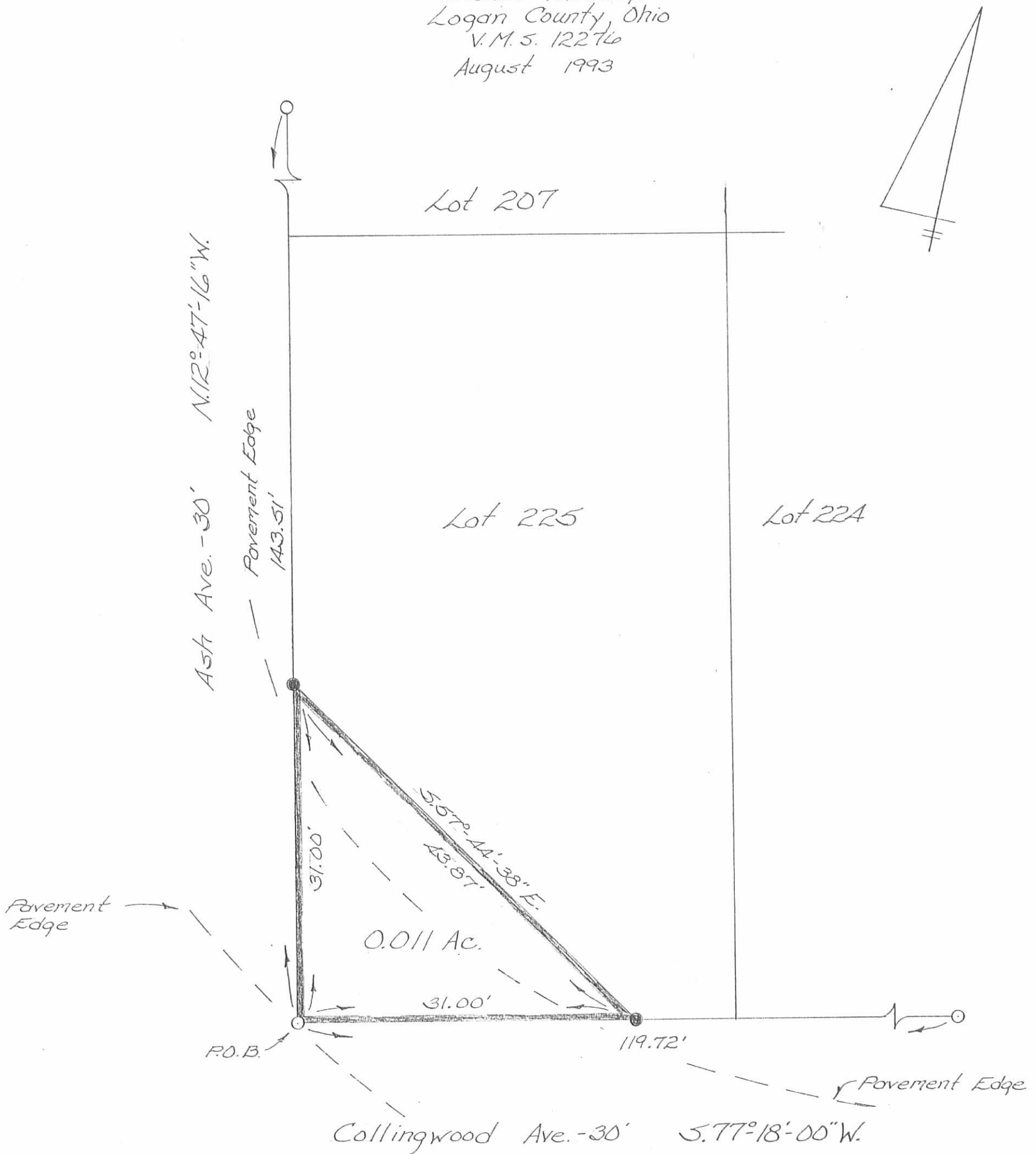


*Curtis D. Dill*  
Curtis D. Dill, P.S.  
Logan County Engineer's Office  
Registered Survey No. 7310  
Bellefontaine, Ohio

INDEXED ON MAP  
6/65 10

Survey for the Stokes Township Trustees

Part of lot 225  
 Wise Allotment of Island View  
 Stokes Township  
 Logan County, Ohio  
 V.M.S. 12276  
 August 1993

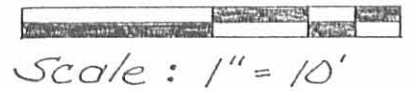


Surveyors Certificate

This plat represents a new survey performed by the Logan County Engineers Office.  
 All angles and distances were measured in the field.  
 All distances are in feet and decimal parts of a foot.  
 Caps on irons set are stamped "Logan County Engineer."  
 Fieldwork was completed in March 1993

Legend

○ = 5/8"  $\phi$  re-bar fd.  
 ● = 5/8"  $\phi$  re-bar set



Scale: 1" = 10'

References

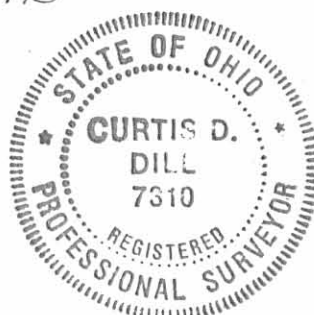
Plat of Wise Allotment of Island View (Plat Cabinet A, slide 193; Logan County Recorder's Office)

Geeslin Survey (Index No. 6165)

INDEXED ON MAP  
 6165 IP

Curtis D. Dill

Curtis D. Dill P.S.  
 Logan County Engineers Office  
 Registered Survey No. 7310  
 Bellefontaine, Ohio



Basis of bearing being Collingwood Ave. (S77°18'00"W) as shown on the plat of Wise Allotment of Island View (J-55).



SCALE: 1" = 30'



- LEGEND:
- = 5/8 INCH IRON BAR FOUND
  - = 5/8 INCH IRON BAR SET

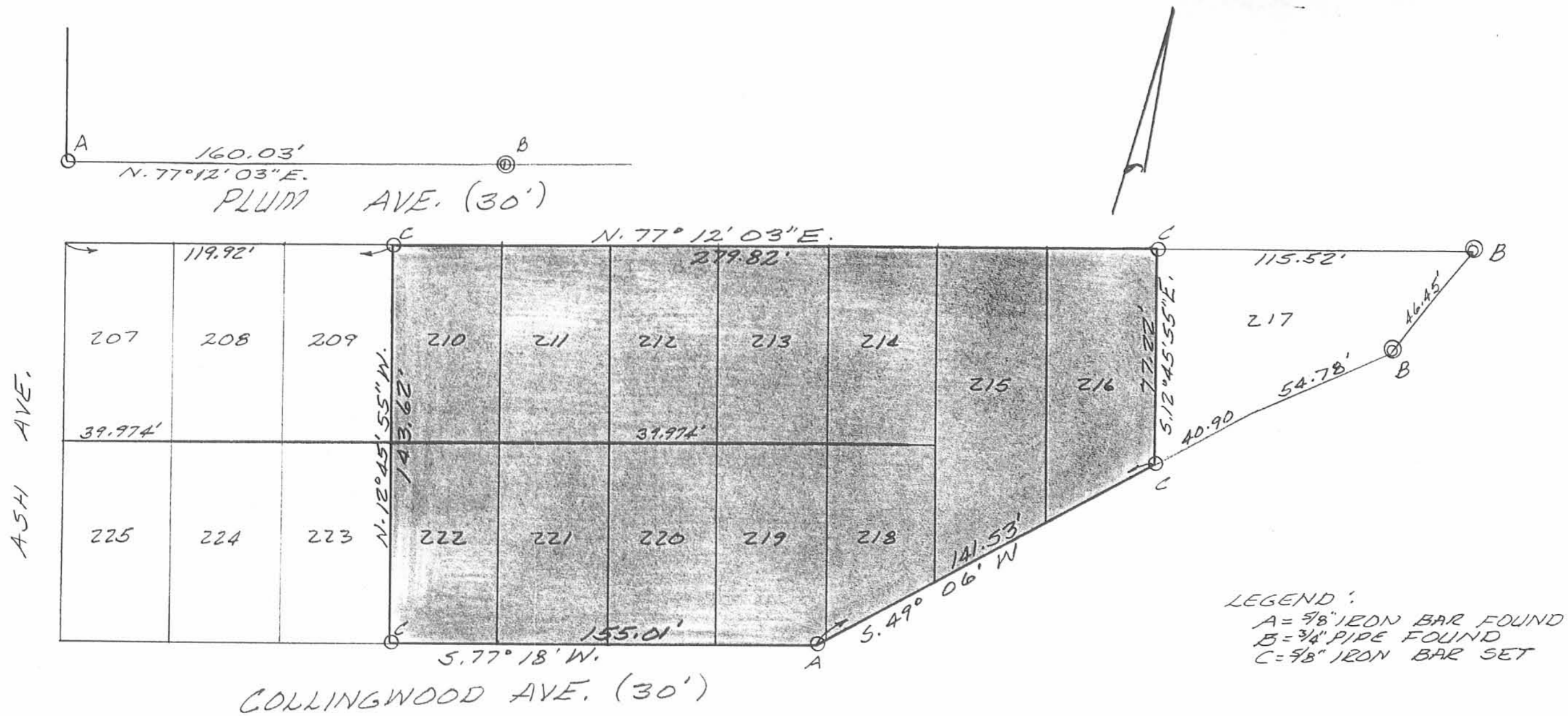
SURVEY OF LOTS 207, 208, 209, 223, 224 AND 225 IN WISE ALLOTMENT OF ISLAND VIEW IN STOKES TOWNSHIP, LOGAN COUNTY, OHIO FOR



INDEXED ON MAP  
6165 28

*Leslie H. Geeslin*  
LESLIE H. GEESLIN  
RUSHSVLVANIA, OH  
(513) 468-2793





LEGEND:  
 A = 9/8" IRON BAR FOUND  
 B = 3/4" PIPE FOUND  
 C = 9/8" IRON BAR SET

SURVEY OF LOTS 210 - 216 AND LOTS 218 - 222,  
 WISE ALLOTMENT OF ISLAND VIEW FOR THE  
 EAGLES.

JULY, 1986  
 SCALE: 1" = 40'

INDEXED ON MAP  
 '6165 4P



Leslie H. Geeslin  
 LESLIE H. GEESLIN  
 RUSHSVLVANIA, OHIO



10-18-2024



Indian Lake Eagles  
Aerie #3615  
Page 2 of 2  
June 18, 2024

### LEGAL DESCRIPTION

Being Lots #207 to 216 & 218 to 225 of the Wise Allotment (P.C. A, Slide 193) in the name of Indian Lake Eagles Aerie #3615 (O.R. 170, Pg. 794; O.R. 170, Pg. 795; O.R. 170, Pg. 796; O.R. 170, Pg. 797; O.R. 170, Pg. 798 & O.R. 170, Pg. 799), Indian Lake Aerie #3615 Fraternal Order of Eagles, Inc. (D.B. 362, Pg. 174) & Indian Lake Eagles Aerie #3615, Inc. (D.B. 379, Pg. 471) and being located in Virginia Military Survey 12276, Stokes Township, Logan County, Ohio, more particularly described as follows:

Beginning at a Mag Spike set at the NW corner of said Lot #207; thence the following courses:

1. N 82°-35'-13" E with the N line of said Lots #207 to 216 and the S line of Plum Avenue, 401.94' to an existing #5 Rebar at the NE corner of said Lot #216 and the NW corner of Lot #217 of said Wise Allotment in the name of Joseph J. Moran (O.R. 258. Pg. 864, Parcel 3 & Parcel 4), passing set Mag Nails at 160.56' & 280.98';
2. S 07°-24'-47" E with the E line of said Lot #216 and the W line of said Lot #217, 76.97' to a #5 Rebar set at the SE corner of said Lot #216 and the SW corner of said Lot #217;
3. S 54°-52'-53" W with the S lines of Lots #216, 215, 218 & 219 and the N line of Collingwood Avenue, 143.35' to a set Mag Spike;
4. S 82°-35'-13" W with the S line of Lots #219 to 225 and the N line of Collingwood Avenue, 275.63' to a #5 Rebar set at the SW corner of said Lot #225, passing a set Mag Nail at 115.03' & passing an existing #5 Rebar at 241.73';
5. N 07°-10'-17" W with the W lines of Lots #225 & 207 and the E line of Ash Avenue, 143.62' to the POINT OF BEGINNING.

The above-described parcel contains 1.229 acres, more or less, subject to all legal highways and easements of record.

The system of bearings for this legal description is based on the Ohio State Plane-North Coordinate System NAD83 (2011). This legal description and accompanying plat represent an actual boundary survey completed under the direct supervision of Kyle J. Binkley, P.S. #8587 on June 18, 2024. All markers called for above are in place.



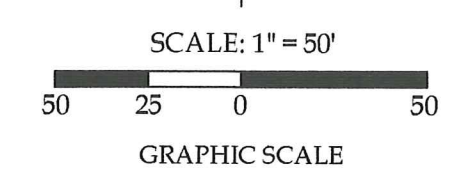


10-18-2024

**APPROVED**

Survey of Parcel #43-005-19-02-001-000, 43-005-19-02-002-000, 43-005-19-02-003-000, 43-005-19-02-003-001, 43-005-19-02-004-000, 43-005-19-02-005-000, 43-005-19-02-007-000, & 43-005-19-02-008-000 and being Lots #207 to 216 & 218 to 225 of the Wise Allotment (P.C. A, Slide 193) and being located in V.M.S. 12276, Stokes Township, Logan County, Ohio.

(Prior Deeds Referenced in O.R. 170, Pg. 794; O.R. 170, Pg. 795; O.R. 170, Pg. 796; O.R. 170, Pg. 797; O.R. 170, Pg. 798; O.R. 170, Pg. 799; D.B. 362, Pg. 174; & D.B. 379, Pg. 471)



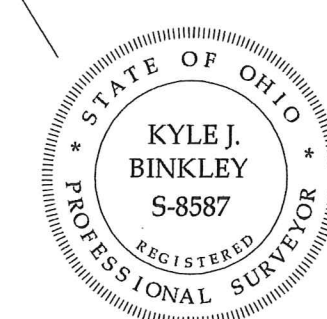
Distance Data

D - 1 = 33.90'

Legend

- A = Existing 1/2" Iron Pipe
- B = Existing #5 Rebar
- C = Set Mag Nail
- D = Set Mag Spike
- E = Set #5 Rebar

This plat and the accompanying legal description represents an actual boundary survey completed under my direct supervision on June 18, 2024.



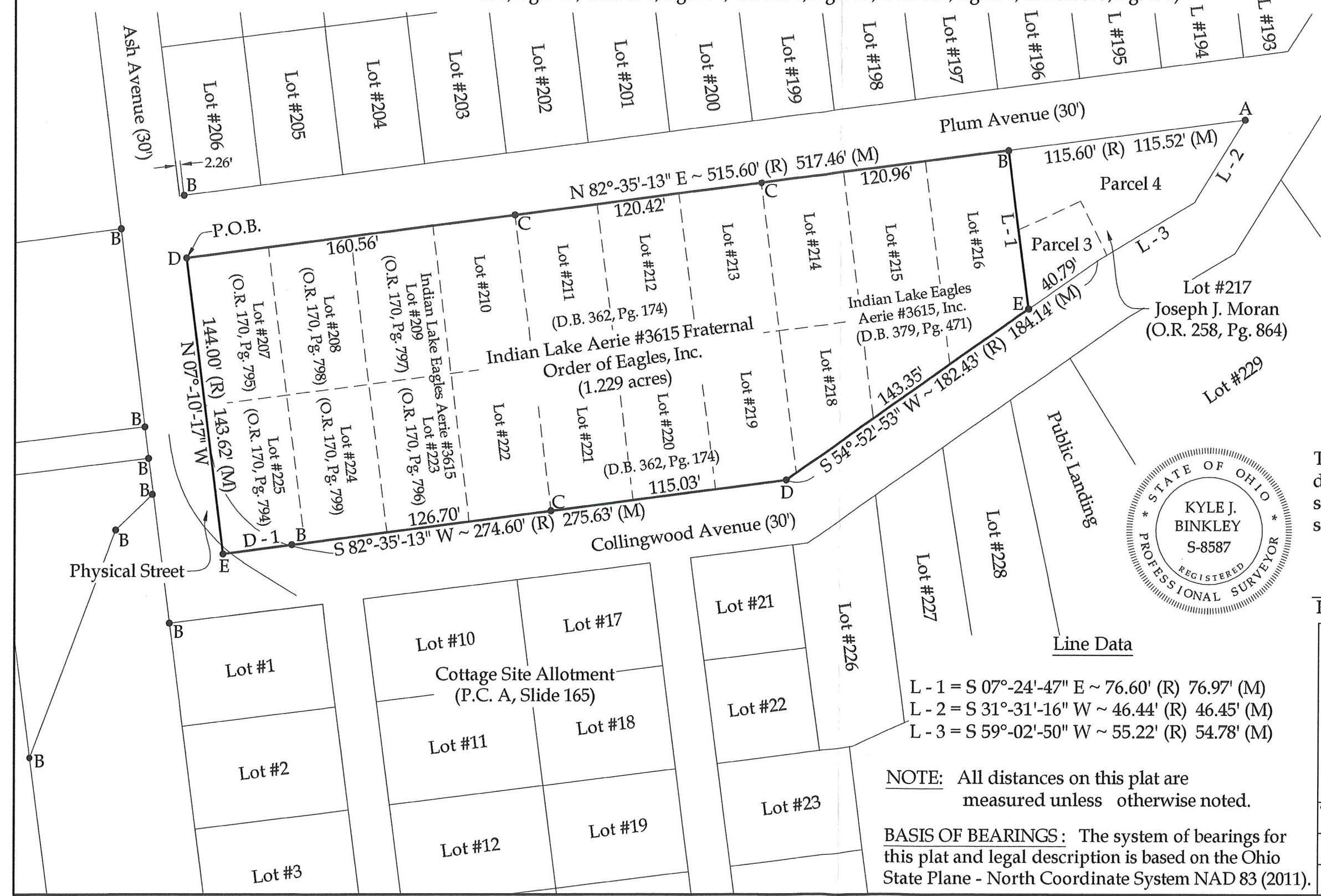
*Kyle J. Binkley*  
Kyle J. Binkley, P.S. #8587

Line Data

- L - 1 = S 07°-24'-47" E ~ 76.60' (R) 76.97' (M)
- L - 2 = S 31°-31'-16" W ~ 46.44' (R) 46.45' (M)
- L - 3 = S 59°-02'-50" W ~ 55.22' (R) 54.78' (M)

**NOTE:** All distances on this plat are measured unless otherwise noted.

**BASIS OF BEARINGS:** The system of bearings for this plat and legal description is based on the Ohio State Plane - North Coordinate System NAD 83 (2011).



**Binkley**  
LAND SURVEYING, LLC

24 W. Auglaize Street  
Wapakoneta, Ohio 45895  
(419) 236-3768

CLIENT: Indian Lake Eagles Aerie #3615			
SURVEYED BY: T.J.S./T.E.W.	DATE: 06-18-2024	DRAWN BY: K.J.B.	CHECKED BY: K.J.B.
SCALE: 1" = 50'	PAGE 1 OF		PAGES 2

INDEXED ON MAP  
665