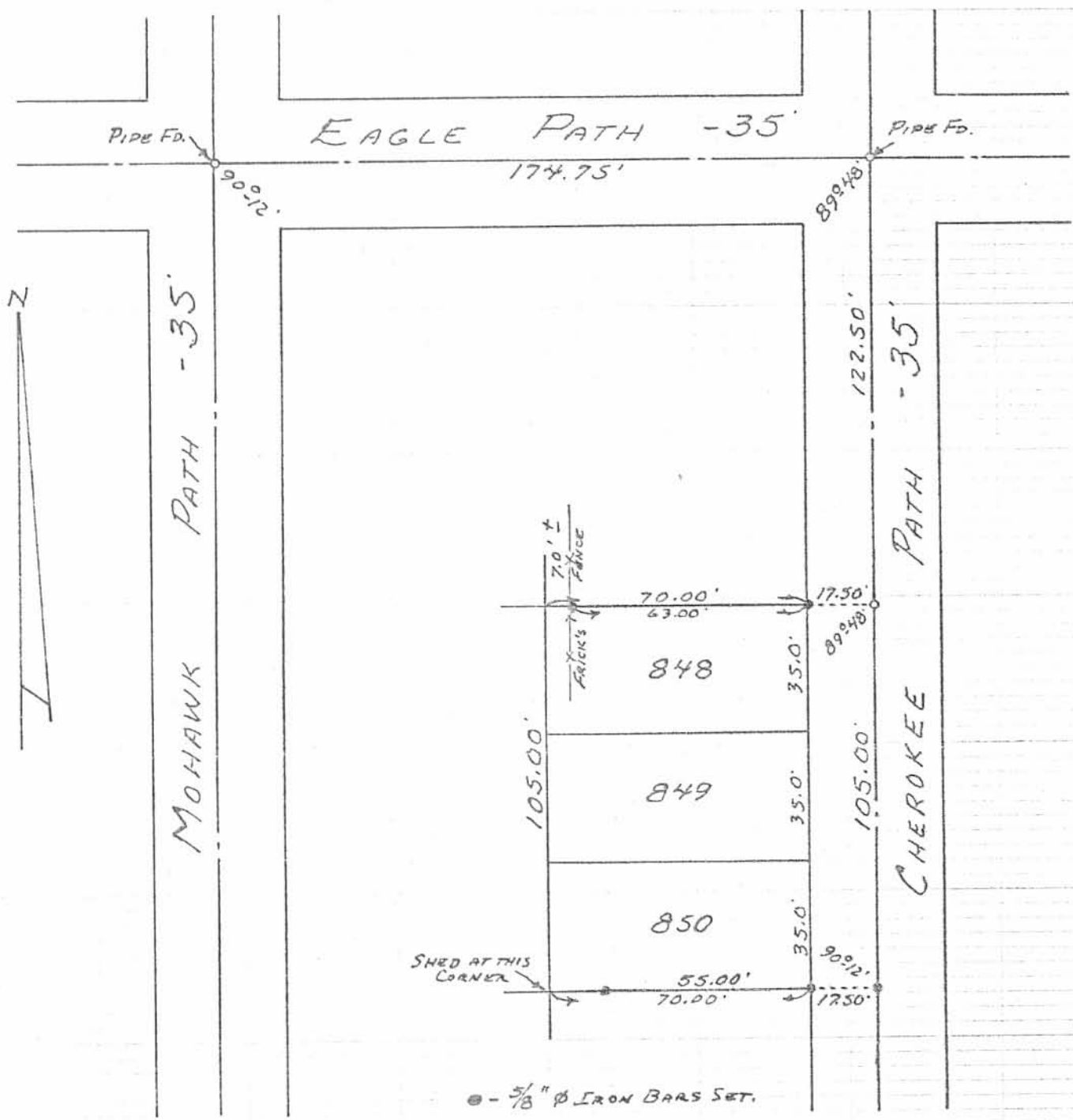


SURVEYED AND PLATTED BY:
 DANIEL E. GILBERT, P.S.
 REG. SUR. NO. 5402
 1041 N. MAIN ST.
 BELLEFONTAINE, OHIO 43311

FRICKE SURVEY
 LOTS 952, 953, 954
 CHIPPEWA PARK No. 1
 V.M.S. NO. 12276
 STOKES TOWNSHIP
 LOGAN COUNTY, OHIO
 NOVEMBER 5, 1977

SCALE: 1" = 40'

(6113) 1P.
 INDEXED ON MAP



6113 2P

INDEXED ON MAP

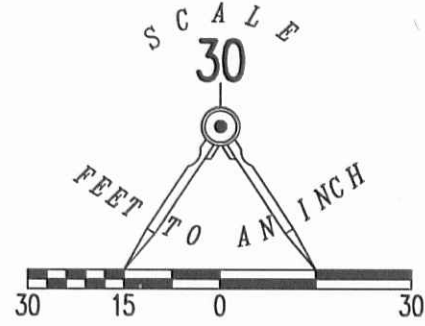
SURVEYED AND PLATTED BY:
 DANIEL E. GILBERT, P.S.
 REG. SUR. NO. 5402
 1041 N. MAIN ST.
 BELLEFONTAINE, OHIO 43311

ROOSE SURVEY
 LOTS 848, 849, 850
 CHIPPEWA PARK No. 1
 V.M.S. No. 12276
 STOKES TOWNSHIP
 LOGAN COUNTY, OHIO
 MAY 27, 1978

SCALE: 1" = 40'

6-24-16 **APPROVED**

RETRACEMENT SURVEY OF
LOTS 851, 853, 854, 855,
856, 857, 944, 945, 946
OFFICIAL RECORD 1220, PAGE 504
CHIPPEWA PARK ALLOTMENT NO. 1
PLAT CABINET A, SLIDE 221
STOKES TOWNSHIP
LOGAN COUNTY, OHIO



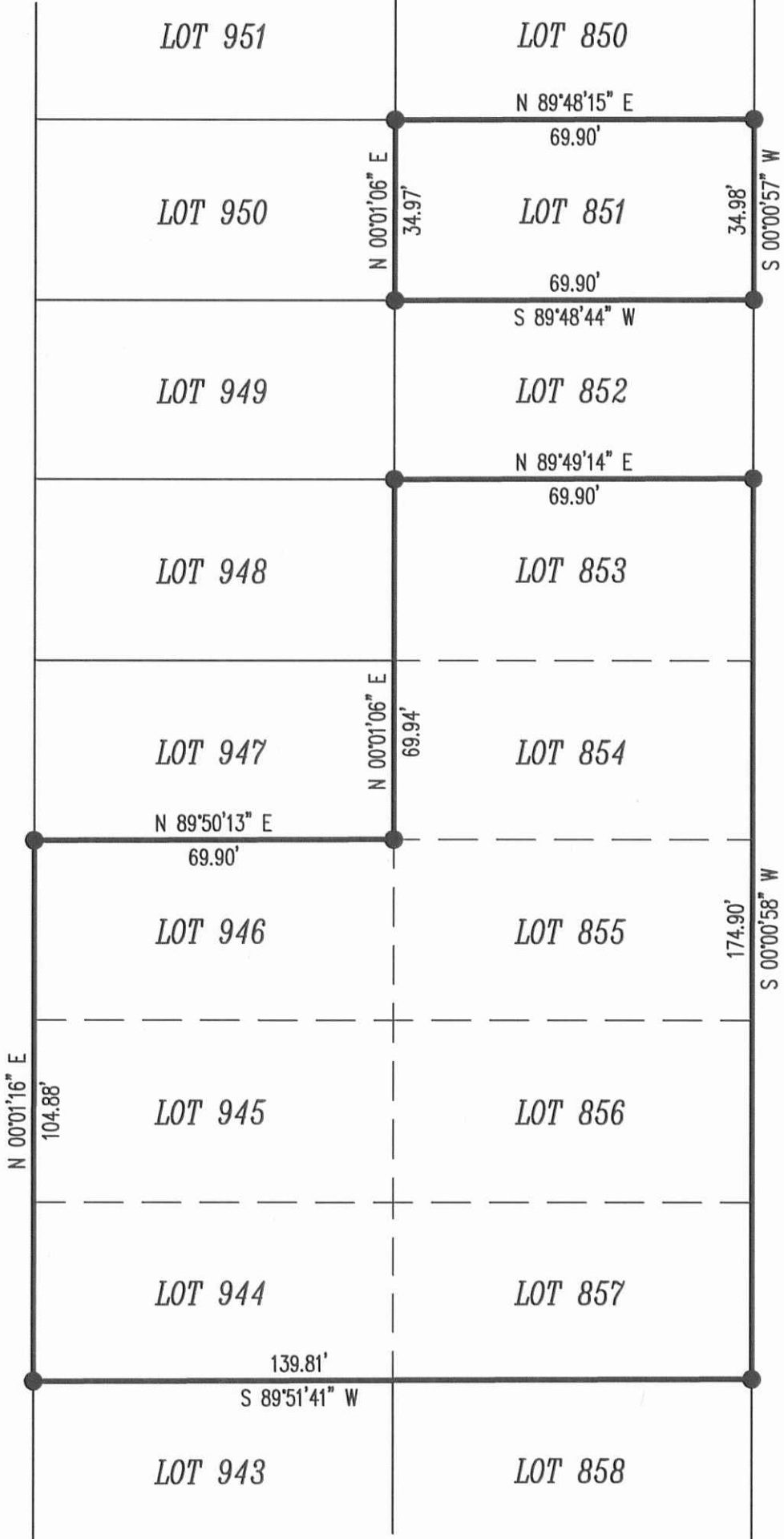
LEGEND

- 5/8 INCH IRON ROD SET WITH PLASTIC I.D. CAP STAMPED LSM "7437"

MOHAWK PATH (35')

BASIS FOR BEARINGS
N 00°01'16" E

N 00°01'16" E
104.88'



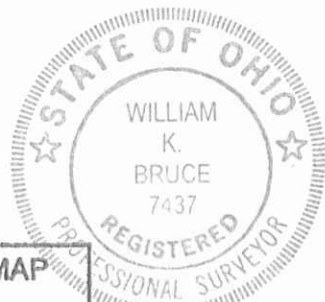
CHEROKEE PATH (35')

SURVEYED BY:

William K. Bruce

WILLIAM K. BRUCE
PROFESSIONAL SURVEYOR 7437
JUNE 9, 2016

COPYRIGHT 2016 BY:
LEE SURVEYING & MAPPING CO., INC.
117 North Madriver Street
BELLEFONTAINE, OHIO 43311
(937) 593-7335
WWW.LSMINC.US
surveys@lsminc.us



ORIGINAL STAMP IN GREEN

INDEXED ON MAP
6113 3P

THIS SURVEY WAS PREPARED IN THE ABSENCE OF
A COMPLETE AND ACCURATE TITLE SEARCH AND
DOES NOT GUARANTEE TITLE.

2 WORKING DAYS

BEFORE YOU DIG

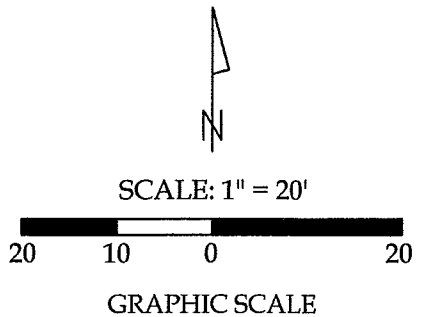


CALL TOLL FREE **800-362-2764**

OHIO UTILITIES PROTECTION SERVICE

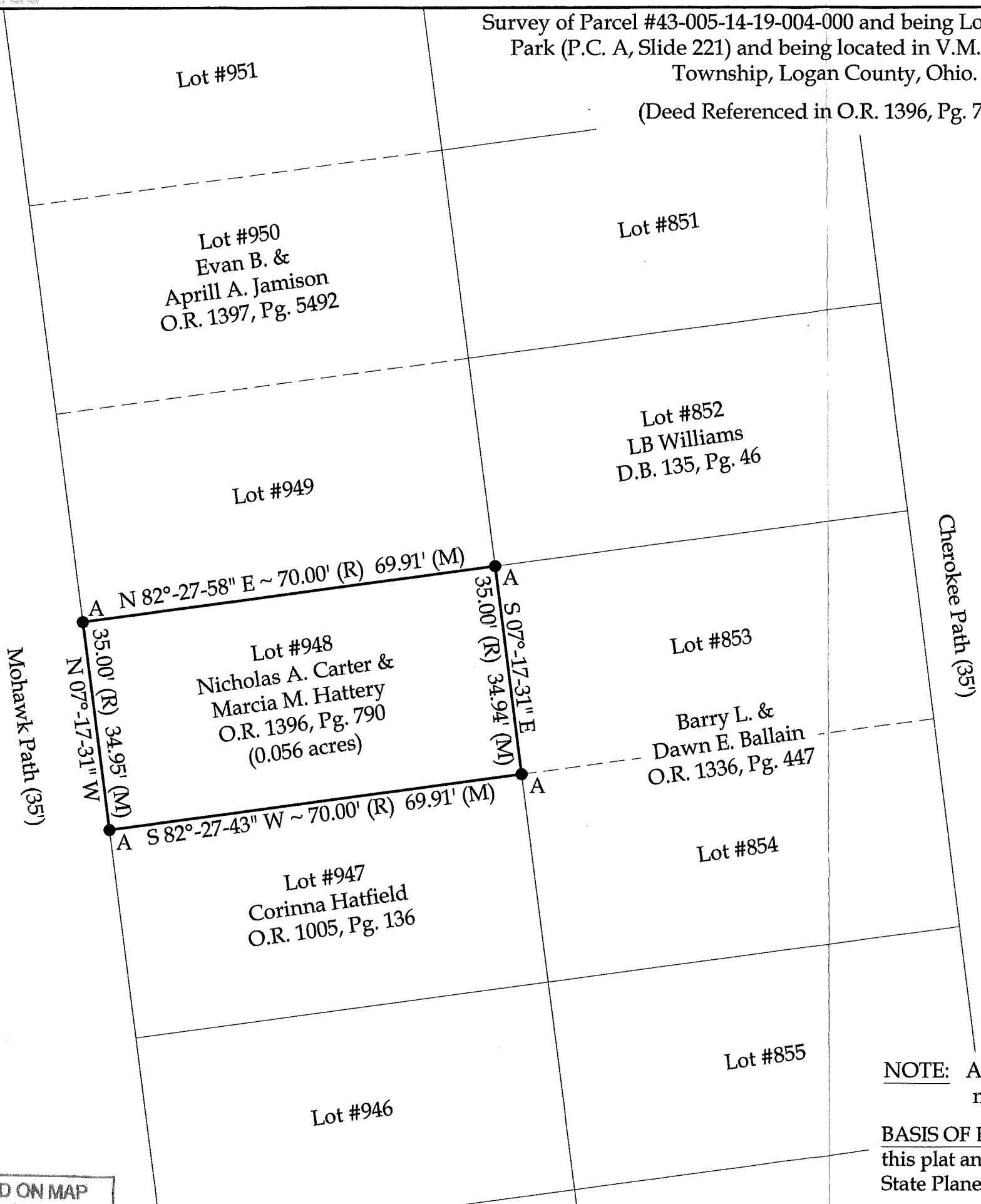
ADW D0516 61030516 L-6103-3

Survey of Parcel #43-005-14-19-004-000 and being Lot #948 of Chippewa Park (P.C. A, Slide 221) and being located in V.M.S. #12276, Stokes Township, Logan County, Ohio.
(Deed Referenced in O.R. 1396, Pg. 790)



Legend

A = Existing #5 Rebar



This plat represents an actual boundary survey completed under my direct supervision on May 18, 2021.

Kyle J. Binkley
Kyle J. Binkley, P.S. #8587

Binkley
LAND SURVEYING, LLC
121 W. Auglaize Street
Wapakoneta, Ohio 45895
(419) 236-3768

CLIENT: Nicholas Carter			
SURVEYED BY: T.J.S./T.E.W.	DATE: 05-18-2021	DRAWN BY: K.J.B.	CHECKED BY: K.J.B.
SCALE: 1" = 20'	PAGE: 1	OF: 1	PAGES: 1

NOTE: All distances on this plat are measured unless otherwise noted.

BASIS OF BEARINGS: The system of bearings for this plat and legal description is based on the Ohio State Plane - North Coordinate System NAD83 (2011).

INDEXED ON MAP
6115