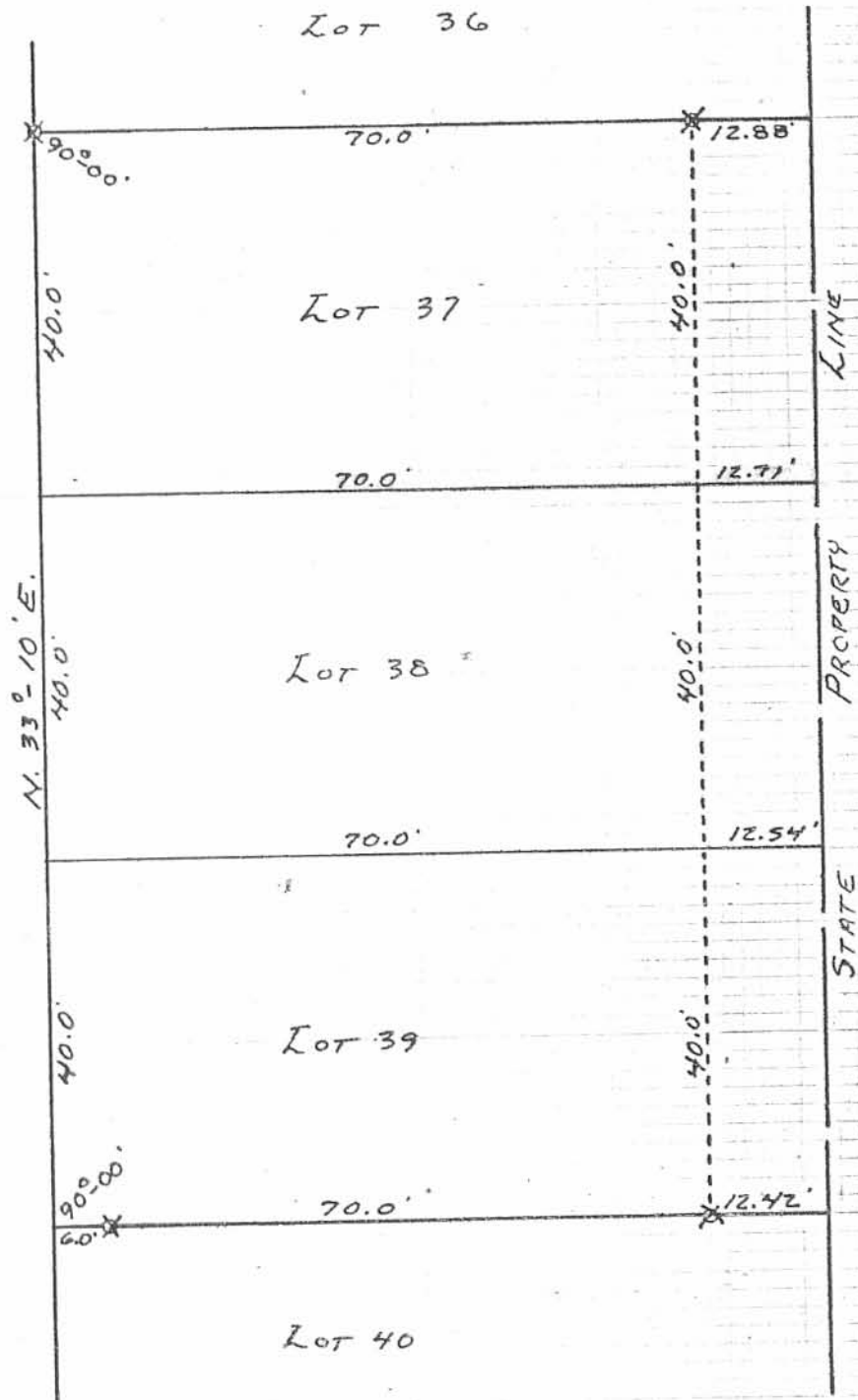


STATE ST. - 30'



⊗ = "T" IRONS SET.

(6069) 1P

INDEXED ON MAP

SURVEYED AND PLATTED BY:  
 DANIEL E. GILBERT, P.S.  
 REG. SUR. NO. 5402  
 1041 N. MAIN ST.  
 BELLEFONTAINE, OHIO 43311

SURVEY OF LOTS 37, 38, 39  
 LAKESIDE ALLOTMENT  
 SECTION 27 R.8E. T.6S.  
 STOKES TOWNSHIP  
 LOGAN COUNTY, OHIO  
 JULY 16, 1977

SCALE: 1" = 20'