

SCALE: 1" = 20'

LEGEND:

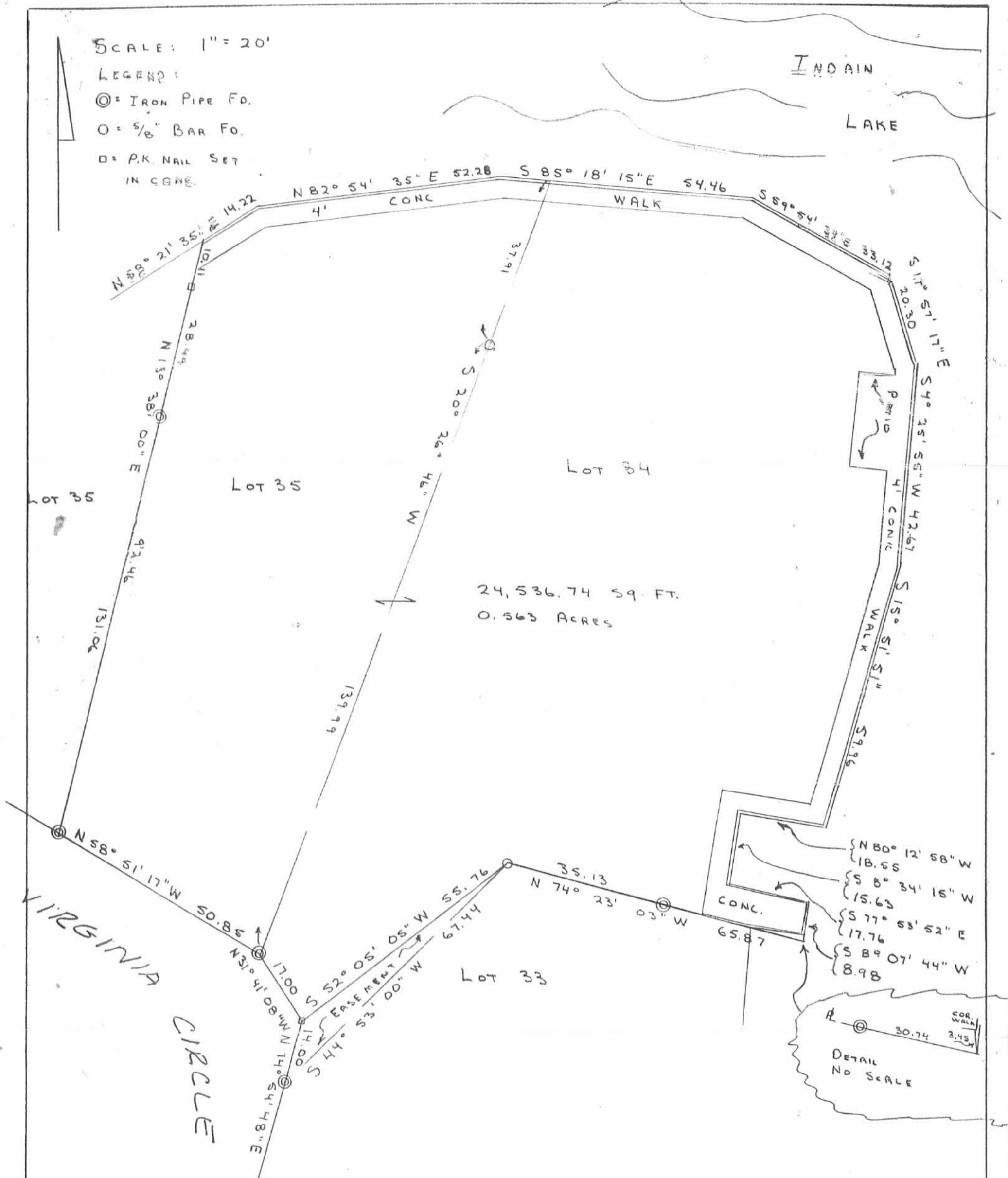
⊙ = IRON PIPE FO.

○ = 5/8" BAR FO.

□ = P.K. NAIL SET
IN CORNER.

INDIAN

LAKE



24,536.74 SQ. FT.
0.563 ACRES

SURVEY OF LOT 34 AND PT. LOT 35
IN LAKERIDGE SUBDIVISION TO INDIAN LAKE,
STOKES TWP., LOGAN CO., OHIO.
FOR BETTY PENN JUNE 8, 1990



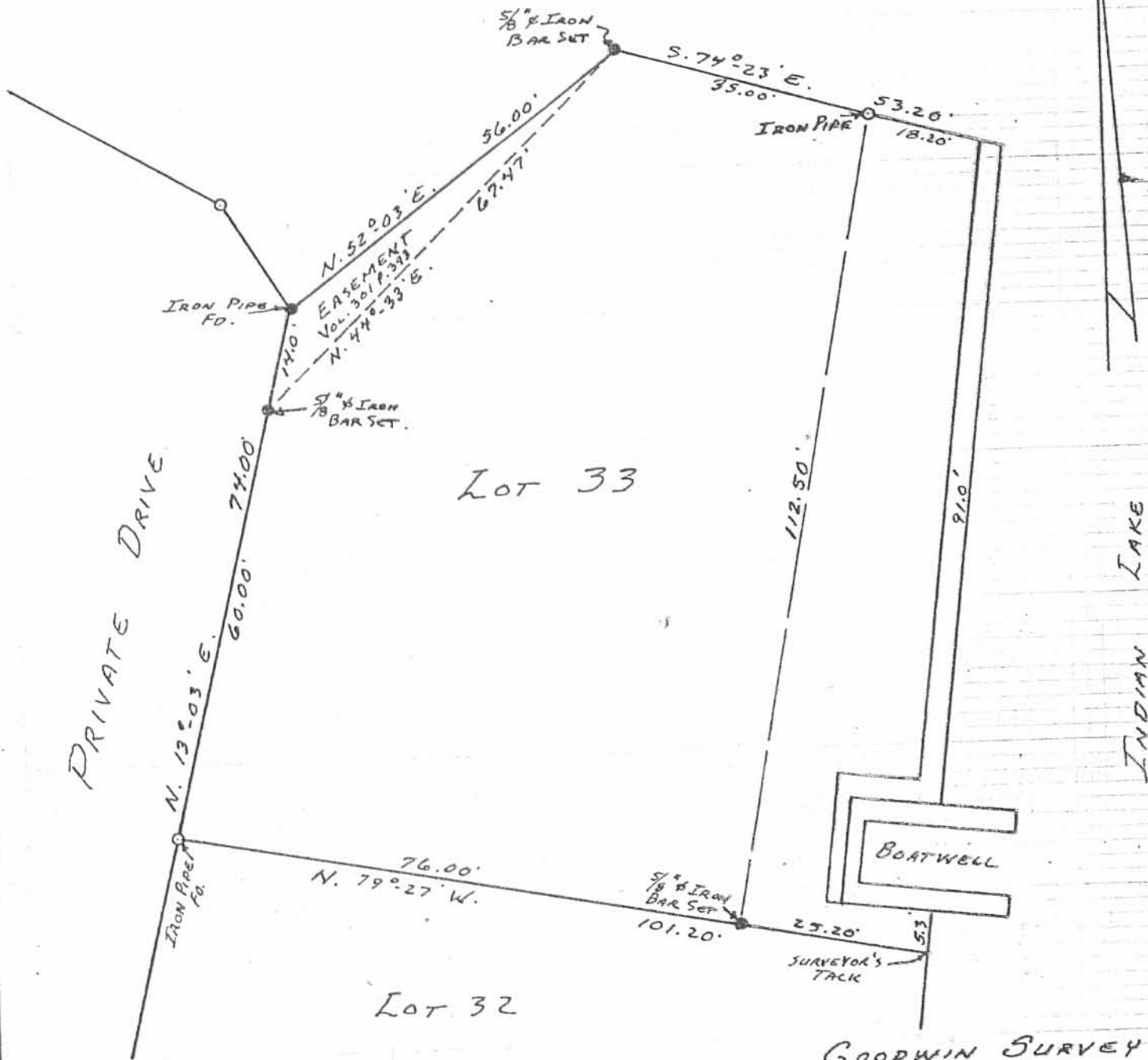
REF: DB VOL. 309 PAGE 516
DB VOL. 251 PAGE 34
LAKERIDGE SUBDIVISION PLAT
{ PLAT BOOK "D", VOL. 4, PAGE 144

INDEXED ON MAP
6062 1P

Leslie H. Geeslin
LESLIE H. GEESLIN
RUSHSVLVANIA, OHIO

Lot 35

Lot 34



PRIVATE DRIVE

INDIAN LAKE

BOATWELL

6062 2P

INDEXED ON MAP

SURVEYED AND PLATTED BY:
 DANIEL E. GILBERT, P.S.
 REG. SUR. NO. 5402
 1041 N. MAIN ST.
 BELLEFONTAINE, OHIO 43311

GOODWIN SURVEY
 Lot No. 33
 LAKERIDGE SUBDIVISION
 STOKES TOWNSHIP
 LOGAN COUNTY, OHIO
 JULY 23, 1977

SCALE: 1" = 20'

Received 5-11-2012 gub

Lee Surveying and Mapping Co., Inc.

Land Surveys • Topography • Subdivisions • Construction Layout

117 N. Madriver St.
Bellefontaine OH 43311



Phone: (937) 593-7335
Fax: (937) 593-7444

TAYLOR 0.220 ACRE PART OF LOT 31

Lying in Virginia Military Survey 12276, Stokes Township, Logan County, Ohio.

Being out of Lot 31 of Lakeridge Subdivision as recorded in Plat Cabinet A Slides 353-355 of the Logan County Record of Plats and being more particularly described as follows:

Beginning at a 1/2 inch iron pipe found on the east line of Hickory Lane (50 feet wide) at the northwest corner of Lot 31.

THENCE, S 59°-27'-40" E, a distance of 108.08 feet to a point, passing a 5/8 inch iron rod set a 103.02 feet.

THENCE, with the east line of Lot 31, S 16°-48'-24" W, a distance of 93.20 feet to a point.

THENCE, with the north line of Lot 30, N 57°-55'-56" W, a distance of 110.00 feet to a 1/2 inch iron pipe found, passing a 3/4 inch iron pipe found at 0.59 feet.

THENCE, with the east line of Hickory Lane, the following two (2) courses:

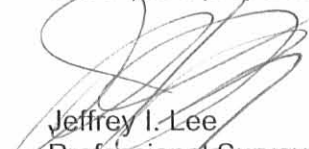
N 19°-45'-52" E, a distance of 60.05 feet to a MAG nail set.

N 13°-03'-00" E, a distance of 30.00 feet to the point of beginning.

Containing 0.220 acre.

The basis for bearings is the west line of Lot 31, being N 13°-03'-00" E, and all other bearings are from angles and distances measured in a field survey by Lee Surveying and Mapping Co., Inc. on April 11, 2001.

Description prepared by:


Jeffrey I. Lee
Professional Surveyor 6359
April 29, 2001



L-3133

ORIGINAL STAMP IN GREEN

INDEXED ON MAP
60623-1

Received 5-11-01 OKGH

Lee Surveying and Mapping Co., Inc.

Land Surveys • Topography • Subdivisions • Construction Layout

117 N. Madriver St.
Bellefontaine OH 43311



Phone: (937) 593-7335
Fax: (937) 593-7444

TAYLOR 0.033 ACRE PART OF LOT 31

Lying in Virginia Military Survey 12276, Stokes Township, Logan County, Ohio.

Being out of Lot 31 of Lakeridge Subdivision as recorded in Plat Cabinet A, Slides 353-355 of the Logan County Record of Plats and being more particularly described as follows:

Beginning at a 1/2 inch iron pipe found on the east line of Hickory Lane (50 feet wide) at the northwest corner of Lot 31.

THENCE, with the south line of Lot 32, S 74°-02'-45" W, a distance of 105.00 feet to a point, passing a 1/2 inch iron pipe found at 100.86 feet.

THENCE, with the east line of Lot 31, S 16°-48'-24" W, a distance of 27.22 feet to a point.

THENCE, N 59°-27'-40" W, a distance of 108.08 feet to the point of beginning, passing a 5/8 inch iron rod set at 5.06 feet.

Containing 0.033 acre.

The basis for bearings is the west line of a 50 feet of Lot 32, N 13°-03'-00" E, and all other bearings are from angles and distances measured in a field survey by Lee Surveying and Mapping Co., Inc. on April 11, 2001.

Description prepared by:

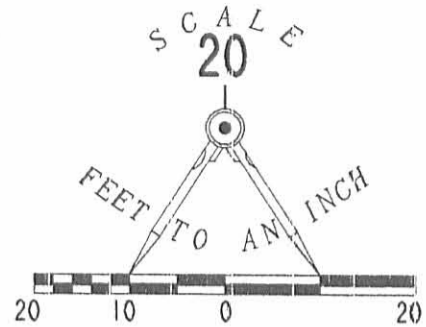

Jeffrey I. Lee
Professional Surveyor 6359
April 29, 2001



L-3133

ORIGINAL STAMP IN GREEN

INDEXED ON MAP
60623D-2



HICKORY LANE (50' R/W)

LOT 33

LOT 32
0.148 ACRE

LOT 31
0.033 ACRE

LOT 31
0.220 ACRE

INDIAN LAKE

LEGEND

- 5/8 INCH IRON ROD SET
- 1/2 INCH IRON PIPE FOUND
- ⊗ P.K. NAIL FOUND
- ⊙ MAG NAIL SET
- 3/4 INCH IRON ROD FOUND

RETRACEMENT SURVEY OF LOT 32 AND A SURVEY OF 0.033 ACRES AND 0.220 ACRES OUT OF LOT 31 OF LAKRIDGE SUBDIVISION PLAT CABINET A, SLIDES 353-355 VIRGINIA MILITARY SURVEY 12276 STOKES TOWNSHIP LOGAN COUNTY, OHIO

SURVEYED BY:

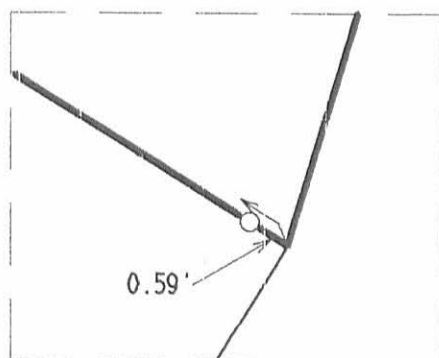
JEFFREY I. LEE
PROFESSIONAL SURVEYOR 6359
APRIL 11, 2001



ORIGINAL STAMP IN GREEN

D 398

COPYRIGHT 2001 BY:
LEE SURVEYING & MAPPING CO., INC.
117 North Madriver Street
BELLEFONTAINE, OHIO 43311
(937) 593-7335
TAYLOR L-3133-3



LOT 30

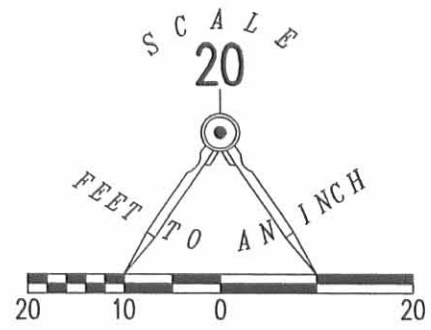
2 WORKING DAYS

BEFORE YOU DIG
CALL TO L FREE 800-362-2764
OHIO UTILITIES PROTECTION SERVICE.

INDEXED ON MAP
6062 3P

LEGEND

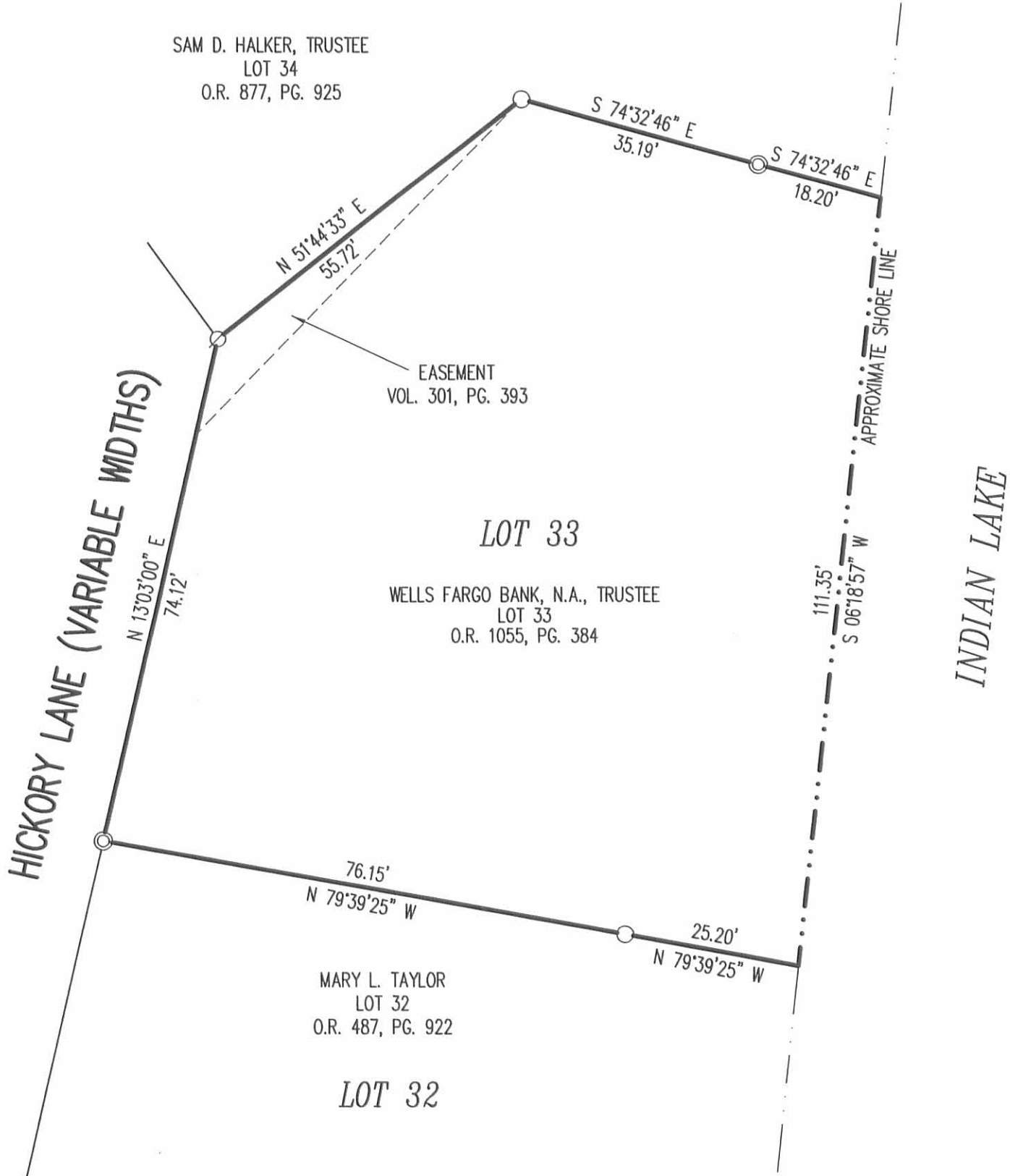
- 5/8 INCH IRON ROD FOUND
- ⊗ P.K. NAIL FOUND
- ⊙ 3/4 INCH IRON PIPE FOUND



LAKE RIDGE SUBDIVISION
PLAT CABINET A, SLIDE 353

LOT 34

SAM D. HALKER, TRUSTEE
LOT 34
O.R. 877, PG. 925



RETRACEMENT SURVEY OF THE
WELLS FARGO BANK, N.A., TRUSTEE
LOT 33
OFFICIAL RECORD 1055, PAGE 384
LAKE RIDGE SUBDIVISION
PLAT CABINET A, SLIDE 353
STOKES TOWNSHIP
LOGAN COUNTY, OHIO

SURVEYED BY:

William K. Bruce

WILLIAM K. BRUCE
PROFESSIONAL SURVEYOR 7437
JULY 27, 2012



COPYRIGHT 2012 BY:
LEE SURVEYING & MAPPING CO., INC.
117 North Madriver Street
BELLEFONTAINE, OHIO 43311
(937) 593-7335
WWW.LSMINC.US
surveys@lsminc.us

2 WORKING DAYS
BEFORE YOU DIG
CALL TOLL FREE **800-362-2764**
OHIO UTILITIES PROTECTION SERVICE

INDEXED ON MAP
6062 4P

ORIGINAL STAMP IN GREEN



Parcel "A"
LEGAL DESCRIPTION

Being all of Lot #34 & a 0.19 acre tract in the name of E & D Assets, Ltd. (O.R. 1409, Pg. 3796) and being the E part of Lot #35 of the Lakeridge Subdivision (P.C. A, Slide 353) and being located in Virginia Military Survey 9968, Stokes Township, Logan County, Ohio, more particularly described as follows:

Beginning at a #5 Rebar set at the SE corner of said Lot #35 and the SW corner of said Lot #34; thence the following courses:

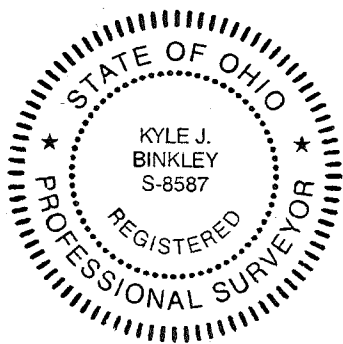
1. N 55°-15'-41" W with the S line of said Lot #35 and the N line of Hickory Lane, 50.85' to a #5 Rebar set at the SW corner of said 0.19 acre tract and the SE corner of the W part of Lot #35 in the name of 9164 Hickory Lane, LLC (O.R. 1413, Pg. 5078);
2. N 17°-04'-19" E with the W line of said 0.19 acre tract and the E line of said W part of Lot #35, 131.06' to a point on the N line of said Lot #35, passing a set #5 Rebar at 92.46';
3. N 61°-47'-56" E with the N line of said Lot #35, 14.22' to a point;
4. N 86°-20'-56" E with the N line of said Lot #35, 52.28' to a point, as referenced by a set #5 Rebar at S 02°-37'-22" W, 6.00';
5. S 81°-51'-54" E with the N line of said Lot #35 & said Lot #34, 54.46' to a point;
6. S 56°-28'-13" E with the N line of said Lot #34, 33.12' to a point;
7. S 14°-32'-30" E with the E line of said Lot #34, 20.31' to a point;
8. S 07°-52'-16" W with the E line of said Lot #34, 42.67' to a point, as referenced by a #5 Rebar set at N 82°-07'-44" W, 8.00' ;
9. S 19°-18'-12" W with the E line of said Lot #34, 59.96' to a point;
10. N 76°-46'-37" W with a Northerly line of said Lot #34, 18.55' to a point;
11. S 12°-00'-36" W with the E line of said Lot #34, 15.63' to a point;
12. S 74°-27'-31" E with a Southerly line of said Lot #34, 17.76' to a point;
13. S 13°-31'-12" W with the E line of said Lot #34, 8.98' to a point;
14. N 71°-06'-36" W with the S line of said Lot #34 and the N line of Lot #33 of said Lakeridge Subdivision, 65.87' to an existing #5 Rebar, passing a set #5 Rebar at 30.74';
15. S 55°-22'-29" W with the Southeasterly line of said Lot #34 and the Northwesterly line of said Lot #33, 55.67' to an existing PK Nail;



16. N 27°-45'-41" W with the S line of said Lot #34 and the N line of Hickory Lane, 17.00' to the POINT OF BEGINNING.

The above described parcel contains 0.564 acres, more or less, subject to all legal highways and easements of record.

The system of bearings for this legal description is based on the Ohio State Plane-North Coordinate System NAD83 (2011). This legal description and accompanying plat represent an actual boundary survey completed under the direct supervision of Kyle J. Binkley, P.S. #8587 on July 14, 2023. All markers called for above are in place.



A handwritten signature in black ink, appearing to read "K. Binkley", positioned to the right of the professional seal.

INDEXED ON MAP
6062

Parcel "B"
LEGAL DESCRIPTION

Being a part of the State of Ohio Indian Lake Reservoir Lands and being located in Virginia Military Survey 9968, Stokes Township, Logan County, Ohio, more particularly described as follows:

Commencing at a #5 Rebar set at the SW corner of Lot #34 and the SE corner of a 0.19 acre tract in the name of E & D Assets, Ltd. (O.R. 1409, Pg. 3796) and being the E part of Lot #35; thence N 55°-15'-41" W with the S line of said Lot #35 and the N line of Hickory Lane, 50.85' to a #5 Rebar set at the SW corner of said 0.19 acre tract and the SE corner of the W part of Lot #35 in the name of 9164 Hickory Lane, LLC (O.R. 1413, Pg. 5078); thence N 17°-04'-19" E with the W line of said 0.19 acre tract and the E line of said W part of Lot #35, 131.06' to a point on the N line of said Lot #35 at the POINT OF BEGINNING, passing a set #5 Rebar at 92.46'; thence the following courses:

1. Continuing N 17°-04'-19" E with the extension the W line of said 0.19 acre tract and the E line of said W part of Lot #35, 4.35' to a point at the approximate shoreline of Indian Lake;
2. N 60°-20'-24" E with the approximate shoreline of Indian Lake, 10.94' to a point;
3. N 85°-36'-29" E with the approximate shoreline of Indian Lake, 42.73' to a point;
4. S 80°-51'-15" E with the approximate shoreline of Indian Lake, 69.56' to a point;
5. S 53°-42'-56" E with the approximate shoreline of Indian Lake, 29.98' to a point;
6. S 14°-32'-30" E with the approximate shoreline of Indian Lake, 20.31' to a point;
7. S 07°-52'-16" W with the approximate shoreline of Indian Lake, 42.67' to a point;
8. S 00°-31'-50" W with the approximate shoreline of Indian Lake, 18.81' to a point;
9. S 15°-20'-09" W with the approximate shoreline of Indian Lake, 35.46' to a point;
10. S 48°-02'-37" W with the approximate shoreline of Indian Lake, 26.75' to a point;
11. N 74°-27'-31" W with a Southerly line of said lot #34, 12.13' to a point;
12. N 12°-00'-36" E with the E line of said lot #34, 15.63' to a point;
13. S 76°-46'-37" E with a Northerly line of said lot #34, 18.55' to a point;
14. N 19°-18'-12" E with the E line of said lot #34, 59.96' to a point on the approximate shoreline of Indian Lake, as referenced by a #5 Rebar set at N 82°-07'-44" W, 8.00';
15. N 07°-52'-16" E with the approximate shoreline of Indian Lake, 42.67' to a point;
16. N 14°-32'-30" W with the approximate shoreline of Indian Lake, 20.31' to a point on the N line of said Lot #34;

17. N 56°-28'-13" W with the N line of said lot #34, 33.12' to a point on the approximate shoreline of Indian Lake;
18. N 81°-51'-54" W with the N line of said lot #34, 54.46' to a point, as referenced by a #5 Rebar set at S 02°-37'-22" W, 6.00';
19. S 86°-20'-56" W with the N line of said lot #34, 52.28' to a point;
20. S 61°-47'-56" W with the N line of said lot #34, 14.22' to the POINT OF BEGINNING.

The above described parcel contains 0.020 acres, more or less, subject to all legal highways and easements of record.

The system of bearings for this legal description is based on the Ohio State Plane-North Coordinate System NAD83 (2011). This legal description and accompanying plat represent an actual boundary survey completed under the direct supervision of Kyle J. Binkley, P.S. #8587 on July 14, 2023. All markers called for above are in place.

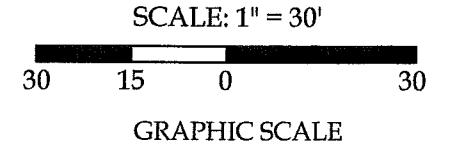


A handwritten signature in black ink, appearing to read "K. Binkley", positioned to the right of the professional seal.

INDEXED ON MAP
6062

7/26/23
 APPROVED

Survey of Parcel #43-019-13-05-008-000 and being all of Lot #34 & a part of Lot #35 of the Lakeridge Subdivision (P.C. A, Slide 353) and 0.020 acres out of the State of Ohio Indian Lake Reservoir Lands and being located in Virginia Military Survey 9968, Stokes Township, Logan County, Ohio.



Distance Data

D - 1 = 12.13'

Line Data

- L - 1 = N 27°-45'-41" W ~ 17.00' (R & M)
- L - 2 = N 69°-00'-41" W ~ 60.00' (R & M)
- L - 3 = N 17°-04'-19" E ~ 4.35'
- L - 4 = N 60°-20'-24" E ~ 10.94'
- L - 5 = N 85°-36'-29" E ~ 42.73'
- L - 6 = S 53°-42'-56" E ~ 29.98'
- L - 7 = S 14°-32'-30" E ~ 20.30' (S) 20.31' (M)
- L - 8 = S 07°-52'-16" W ~ 42.67' (S & M)
- L - 9 = S 00°-31'-50" W ~ 18.81'
- L - 10 = S 15°-20'-09" W ~ 35.46'
- L - 11 = S 48°-02'-37" W ~ 26.75'
- L - 12 = N 74°-27'-31" W ~ 17.76' (S & M)
- L - 13 = N 12°-00'-36" E ~ 15.63' (S & M)
- L - 14 = S 76°-46'-37" E ~ 18.55' (S & M)
- L - 15 = N 19°-18'-12" E ~ 59.96' (S & M)
- L - 16 = N 56°-28'-13" W ~ 33.12' (S & M)
- L - 17 = N 81°-51'-54" W ~ 54.46' (S & M)
- L - 18 = S 86°-20'-56" W ~ 52.28' (S & M)
- L - 19 = S 61°-47'-56" W ~ 14.22' (S & M)
- L - 20 = S 13°-31'-12" W ~ 8.98' (S & M)
- L - 21 = S 02°-37'-22" W ~ 6.00'
- L - 22 = N 82°-07'-44" W ~ 8.00'



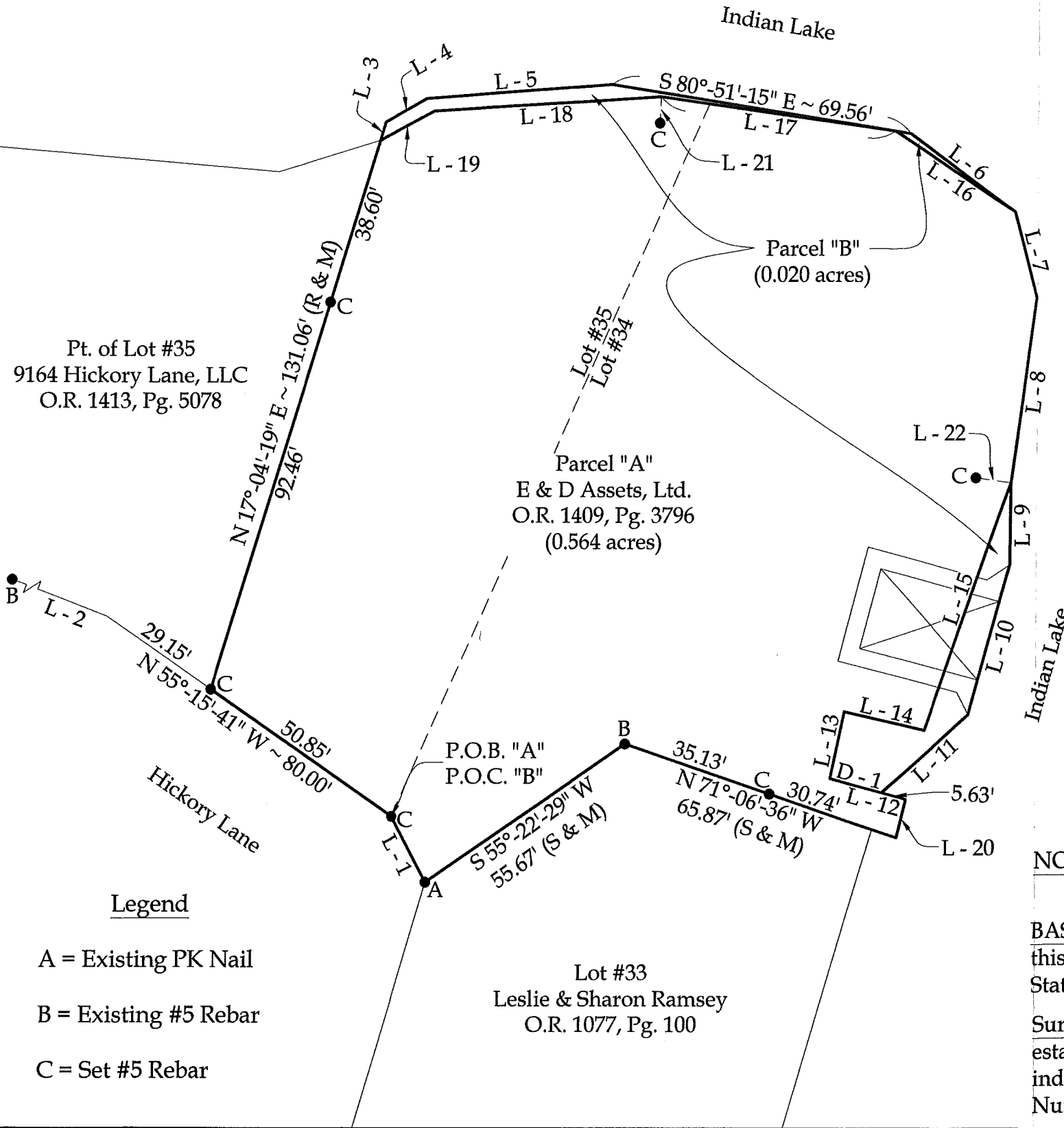
This plat and the accompanying legal description represents an actual boundary survey completed under my direct supervision on July 14, 2023.

Kyle J. Binkley, P.S. #8587

Binkley
 LAND SURVEYING, LLC

24 W. Auglaize Street
 Wapakoneta, Ohio 45895
 (419) 236-3768

CLIENT: E & D Assets, Ltd.			
SURVEYED BY: T.J.S./M.A.B.	DATE: 07-14-2023	DRAWN BY: K.J.B.	CHECKED BY: K.J.B.
SCALE: 1" = 30'	PAGE 1 OF 5		PAGES 5



Legend

- A = Existing PK Nail
- B = Existing #5 Rebar
- C = Set #5 Rebar

NOTE: All distances on this plat are measured unless otherwise noted.

BASIS OF BEARINGS: The system of bearings for this plat and legal description is based on the Ohio State Plane - North Coordinate System NAD83 (2011).

Surveyor's Note: The boundary lines for Lot #34 were established in the Geeslin Survey, dated June 8, 1990 and indexed on Map #6062 of the Logan County Tax Map Number. The Survey Measured distances are labeled as (S).

INDEXED ON MAP
 6062