

REC'D 6-20-00 SMJ OK ✓

# Lee Surveying and Mapping Co., Inc.

Land Surveys • Topography • Subdivisions • Construction Layout

117 N. Madriver St.  
Bellefontaine OH 43311



Phone: (937) 593-7335  
Fax: (937) 593-7444

## PART OF LOT 2284 0.025 ACRE

Lying in Virginia Military Survey 12276, Stokes Township, Logan County, Ohio.

Being part of Lot 2284 of Chippewa Park No. 3 as described in Plat Cabinet A, Slide 235 of the Logan County Records of Plats and being more particularly described as follows:

Beginning at a 5/8 inch iron rod set on the north line of Seminole Path (35 feet wide) at the southeast corner of Lot 2363 and the southwest corner of Lot 2284.

THENCE, with the east line of Lot 2363 and the west line of Lot 2284, N 0°-01'-54" E, a distance of 86.19 feet to a 5/8 inch iron rod set on the northeast corner of Lot 2363.

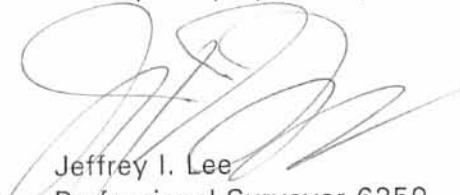
THENCE, S 23°-42'-32" E, a distance of 63.06 feet to a 5/8 inch iron rod set.

THENCE, with the north line of Seminole Path, S 41°-45'-30" W, a distance of 38.14 feet to the point of beginning.

Containing 0.025 acre.

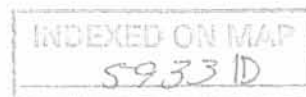
The basis for bearings is the north line of Seminole Path, being S 41°-45'-30" W, and all other bearings are from angles and distances measured in a field survey by Lee Surveying and Mapping Co., Inc. on June 7, 2000.

Description prepared by:

  
Jeffrey I. Lee  
Professional Surveyor 6359  
June 14, 2000

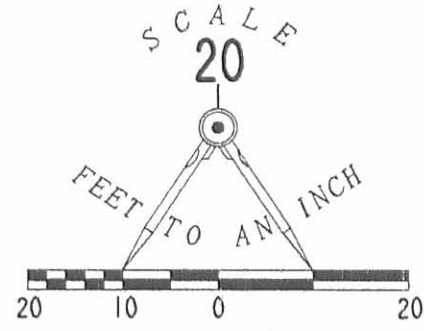


ORIGINAL STAMP IN GREEN  
L-2985

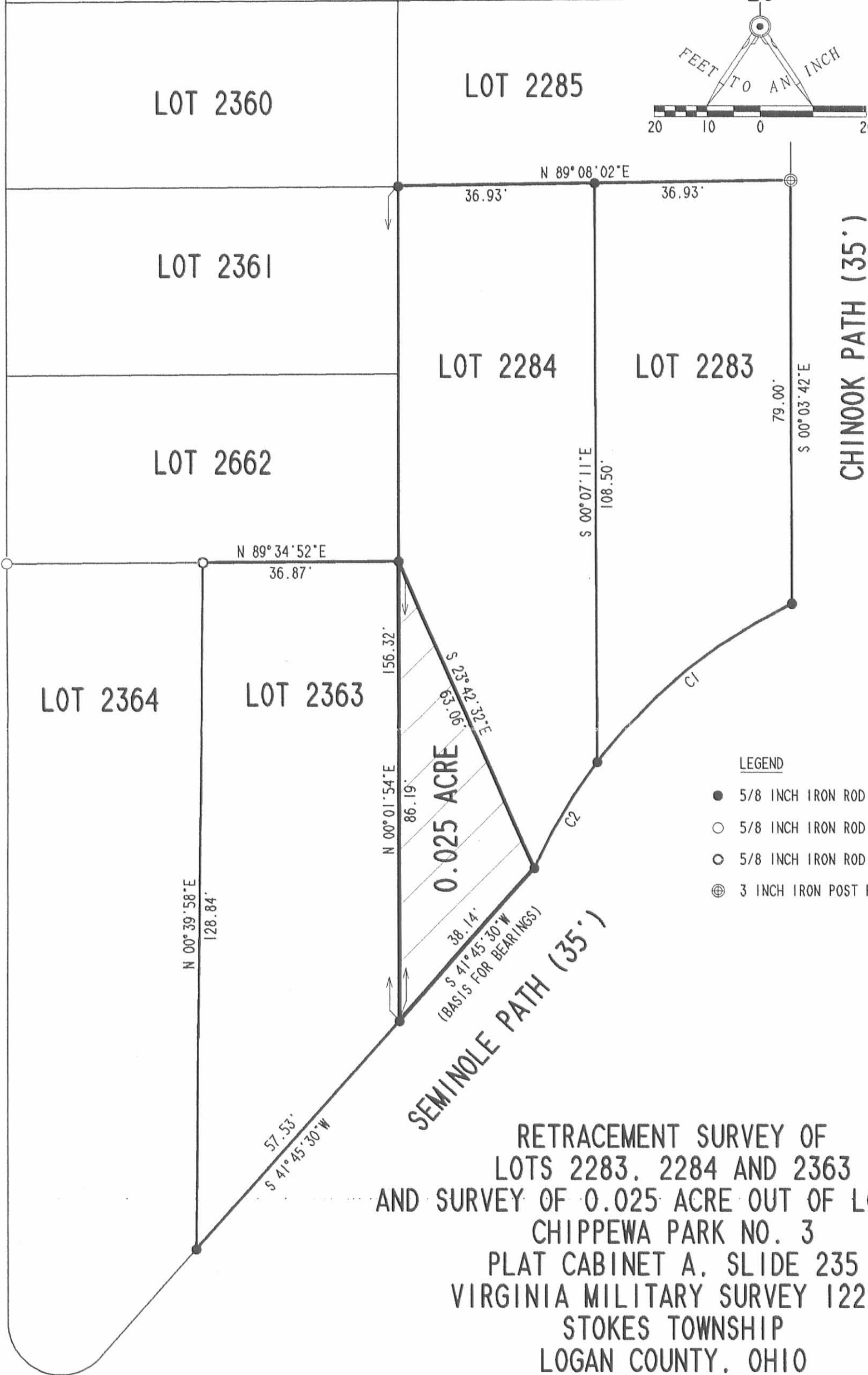


REC'D 6-20-00 SMY OK ✓

CURVE	DELTA ANGLE	RADIUS	ARC	TANGENT	CHORD	CHORD BEARING
C 1	26° 59' 13"	101.79'	47.94'	24.42'	47.50'	S 50° 44' 35" W
C 2	13° 04' 26"	101.79'	23.23'	11.66'	23.18'	S 30° 42' 49" W



KOOTENAY PATH (35')




**LEGEND**

- 5/8 INCH IRON ROD SET
- 5/8 INCH IRON ROD FOUND
- ⊙ 5/8 INCH IRON ROD FOUND IN CONCRETE
- ⊕ 3 INCH IRON POST FOUND

**RETRACEMENT SURVEY OF  
 LOTS 2283, 2284 AND 2363  
 AND SURVEY OF 0.025 ACRE OUT OF LOT 2284  
 CHIPPEWA PARK NO. 3  
 PLAT CABINET A, SLIDE 235  
 VIRGINIA MILITARY SURVEY 12276  
 STOKES TOWNSHIP  
 LOGAN COUNTY, OHIO**

SURVEYED BY:

  
**JEFFREY L. LEE**  
 PROFESSIONAL SURVEYOR 7437  
 JUNE 7, 2000



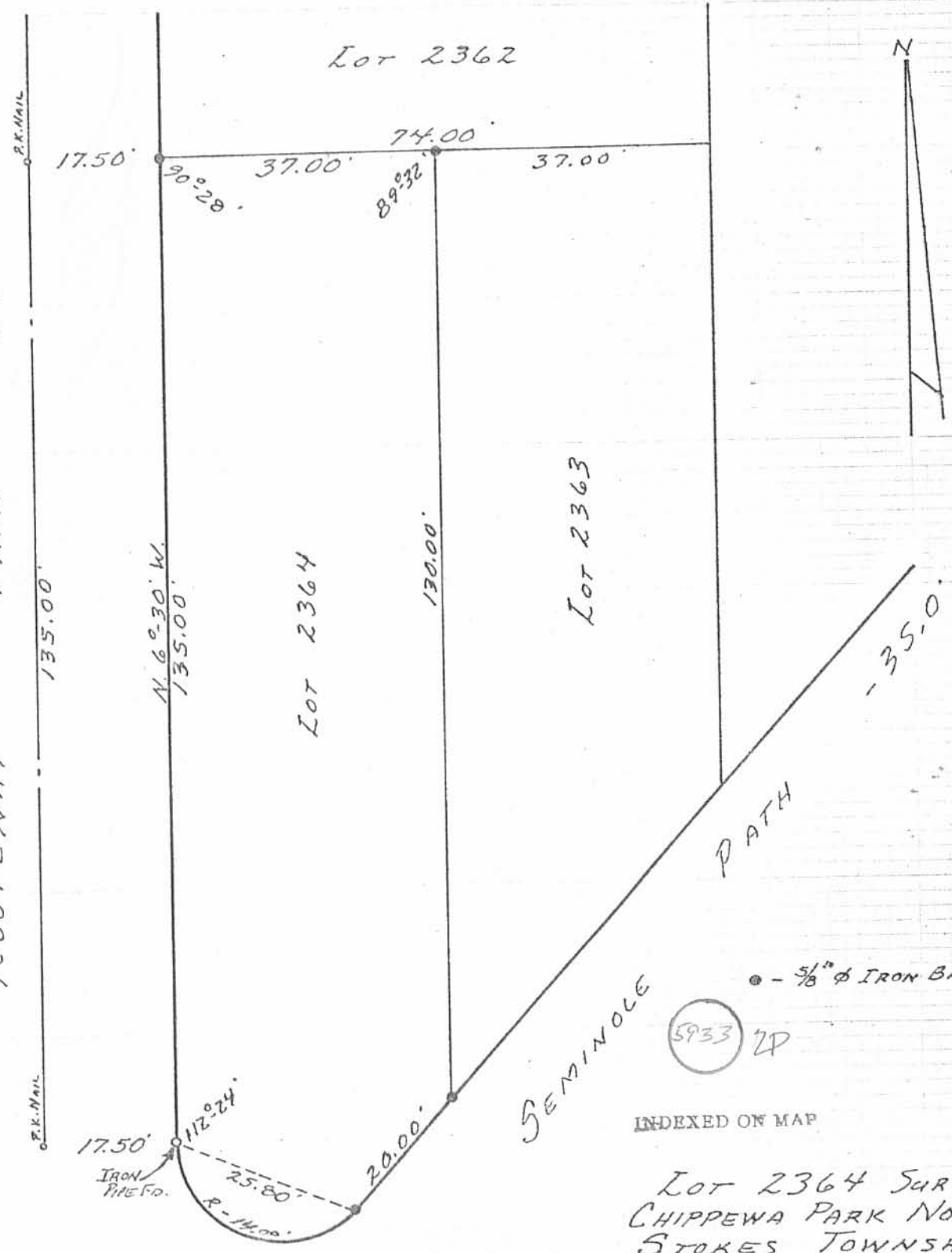
ORIGINAL STAMP IN GREEN

COPYRIGHT 2000 BY:  
**LEE SURVEYING & MAPPING CO., INC.**  
 117 North Madriver Street  
 BELLEFONTAINE, OHIO 43311  
 (937) 593-7335

2 WORKING DAYS  
**BEFORE YOU DIG**  
 CALL TOLL FREE **800-362-2764**  
OHIO UTILITIES PROTECTION SERVICE.

INDEXED ON MAP  
 5933 1P

KOOTENAY PATH - 35.0'



• - 5/8"  $\phi$  IRON BARS SET,

5933 2P

INDEXED ON MAP

LOT 2364 SURVEY  
 CHIPPEWA PARK No. 3  
 STOKES TOWNSHIP  
 LOGAN COUNTY, OHIO  
 AUGUST 14, 1976

SCALE: 1" = 20'

SURVEYED AND PLATTED BY:  
 DANIEL E. GILBERT, P.S.  
 REG. SUR. No. 5402  
 1041 N. MAIN ST.  
 BELLEFONTAINE, OHIO 43311