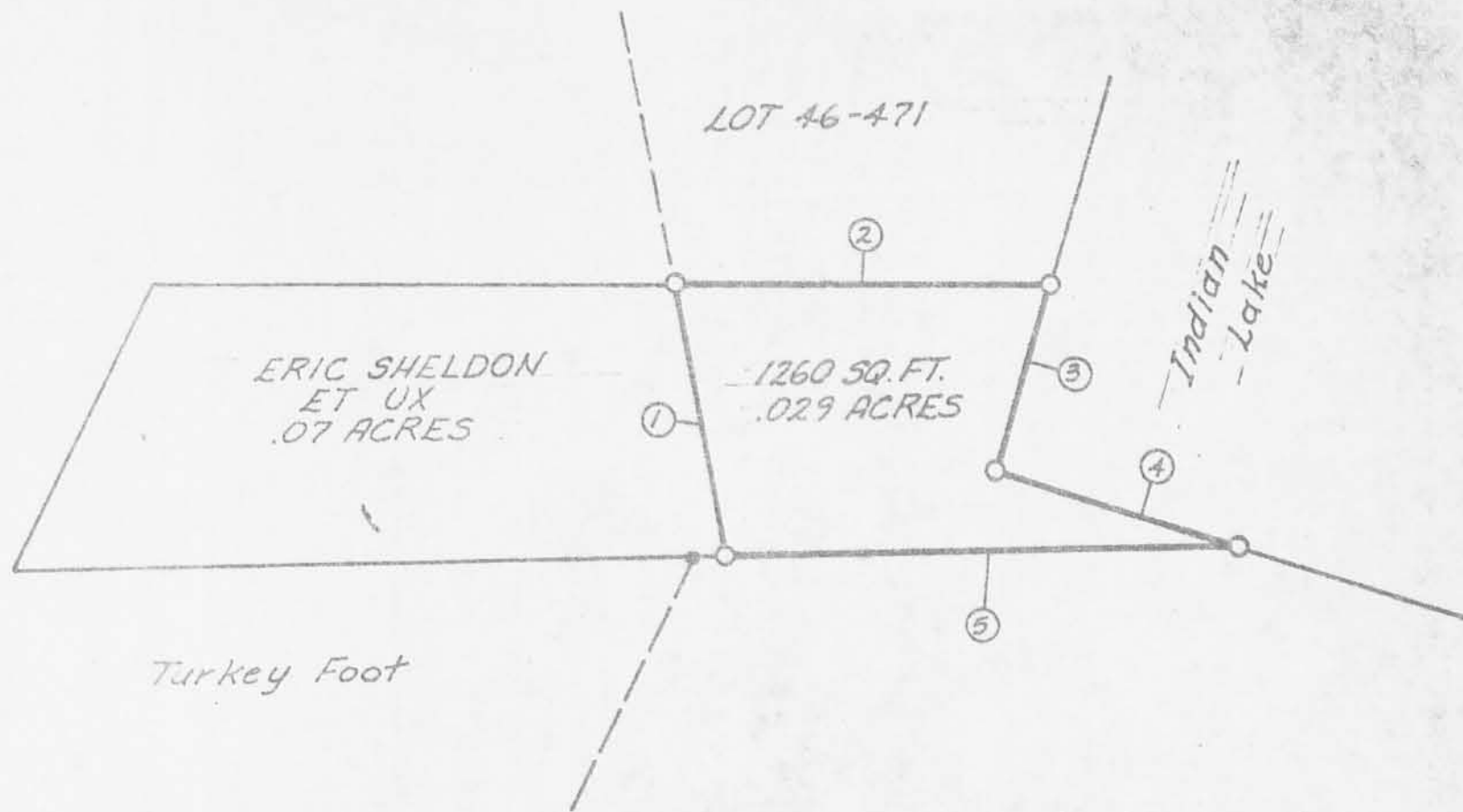




Scale 1"=20'



PLAT OF PART OF
 LOT 46-471
 Indian Lake Reservoir Lands No. 2
 Logan County, Ohio
 Plat Book 5E, Pages 30-60

By F. E. Miller
 Registered Surveyor No. 4040

- ① N 08°-33'-59" W 31.56'
- ② S 89°-58'-58" E 49.14'
- ③ S 18°-14'-58" W 22.95'
- ④ S 71°-34'-03" E 29.77'
- ⑤ N 89°-59'-01" W 59.49'

INDEXED ON MAP
 5863 1P

STATE OF OHIO
 DEPARTMENT OF NATURAL RESOURCES
 OFFICE OF CHIEF ENGINEER

SCALE: 1"=20'
 DATE: DECEMBER, 1974
 DRAWN BY: PHILIP D. SWAN