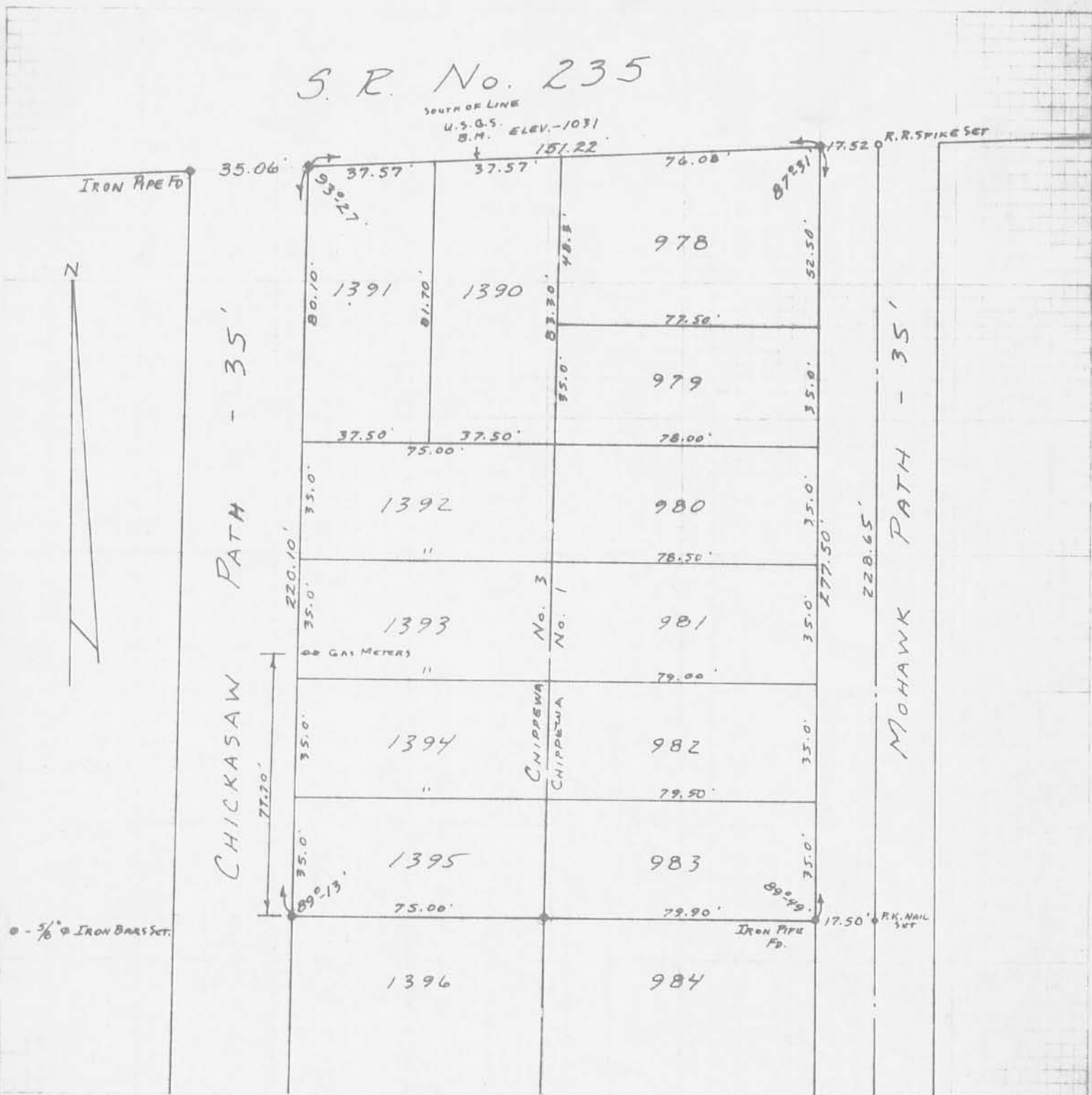


S. R. No. 235

SOUTH OF LINE
U.S.G.S. ELEV. -1031
B.M. 151.22



0 - 5/8" IRON BARS SET.

5664 IP

SURVEYED AND PLATTED BY:
DANIEL E. GILBERT, P.S.
REG. SUR. No. 5402
1041 N. MAIN ST.
BELLEFONTAINE, OHIO 43311

INDEXED ON MAP

NAZARENE CHURCH SURVEY
LOTS 978 THRU 983
LOTS 1390 THRU 1395
CHIPPEWA PARK
STOKES TOWNSHIP
LOGAN COUNTY, OHIO
JUNE 15, 1974

SCALE: 1" = 40'