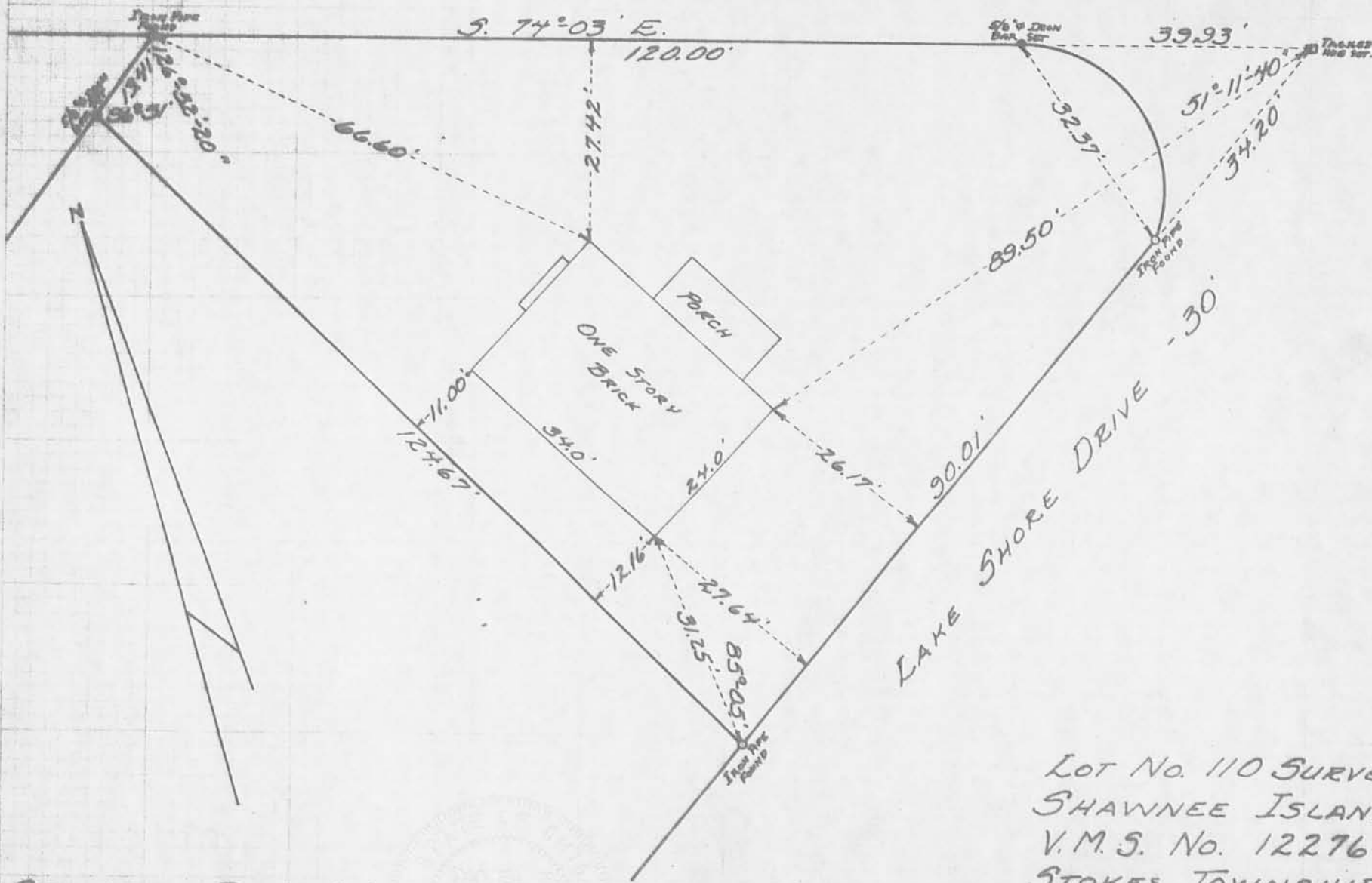


BEECH DRIVE - 30'



SURVEYED AND PLATED BY:  
DANIEL E. GILBERT, P.S.  
REG. SUR. No. 5402  
1041 N. MAIN ST.  
BELLEFONTAINE, OHIO 43311



5456 1D

INDEXED ON MAP

LOT No. 110 SURVEY  
SHAWNEE ISLAND  
V.M.S. No. 12276  
STOKES TOWNSHIP  
LOGAN COUNTY, OHIO  
MARCH 10, 1973  
SCALE: 1"=20'

1973