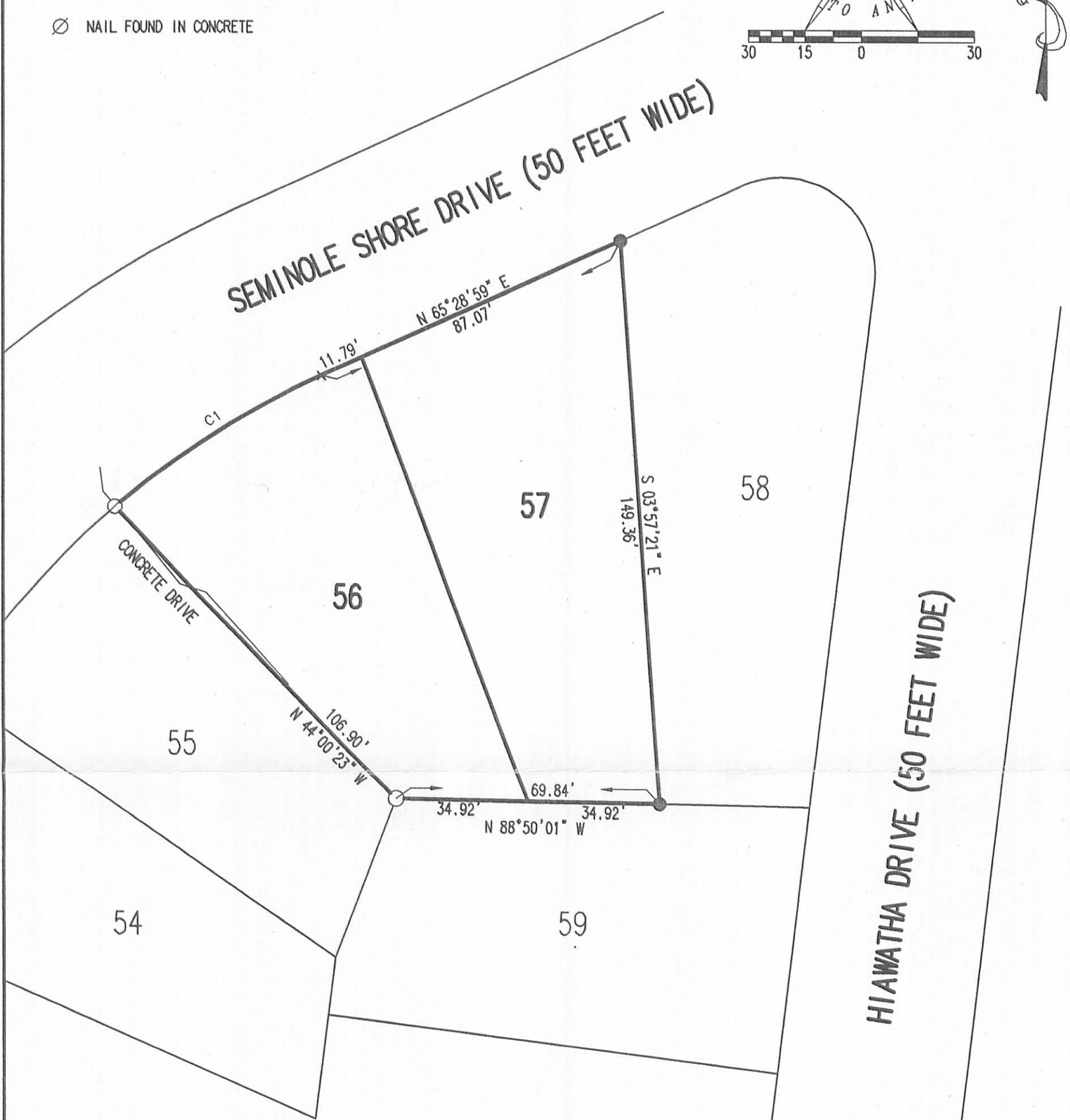
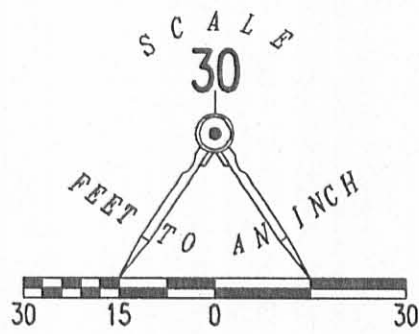


CURVE	DELTA ANGLE	RADIUS	ARC LENGTH	CHORD BEARING	CHORD LENGTH
C1	15°36'13"	237.94'	64.80'	N 57°38'39" E	64.60'

LEGEND

- 5/8 INCH IRON ROD SET
- 1/2 INCH IRON PIPE FOUND
- ⊗ NAIL FOUND IN CONCRETE



**SEMINOLE SHORES SUBDIVISION NO. 1**  
PLAT CABINET A, SLIDE 251

A RETRACEMENT SURVEY OF  
LOTS 56 AND 57  
SEMINOLE SHORES SUBDIVISION NO. 1  
PLAT CABINET A, SLIDE 251  
VIRGINIA MILITARY SURVEY 12276  
STOKES TOWNSHIP  
LOGAN COUNTY, OHIO

SURVEYED BY:

*Jeffrey I. Lee*  
JEFFREY I. LEE  
PROFESSIONAL SURVEYOR 6359  
OCTOBER 4, 2005



COPYRIGHT 2005 BY:  
**LEE SURVEYING & MAPPING CO., INC.**  
117 North Madriver Street  
BELLEFONTAINE, OHIO 43311  
(937) 593-7335  
ADW D1005 4134095 L-4134095-3

2 WORKING DAYS  
**BEFORE YOU DIG**  
CALL TOLL FREE **800-362-2764**  
OHIO UTILITIES PROTECTION SERVICE.

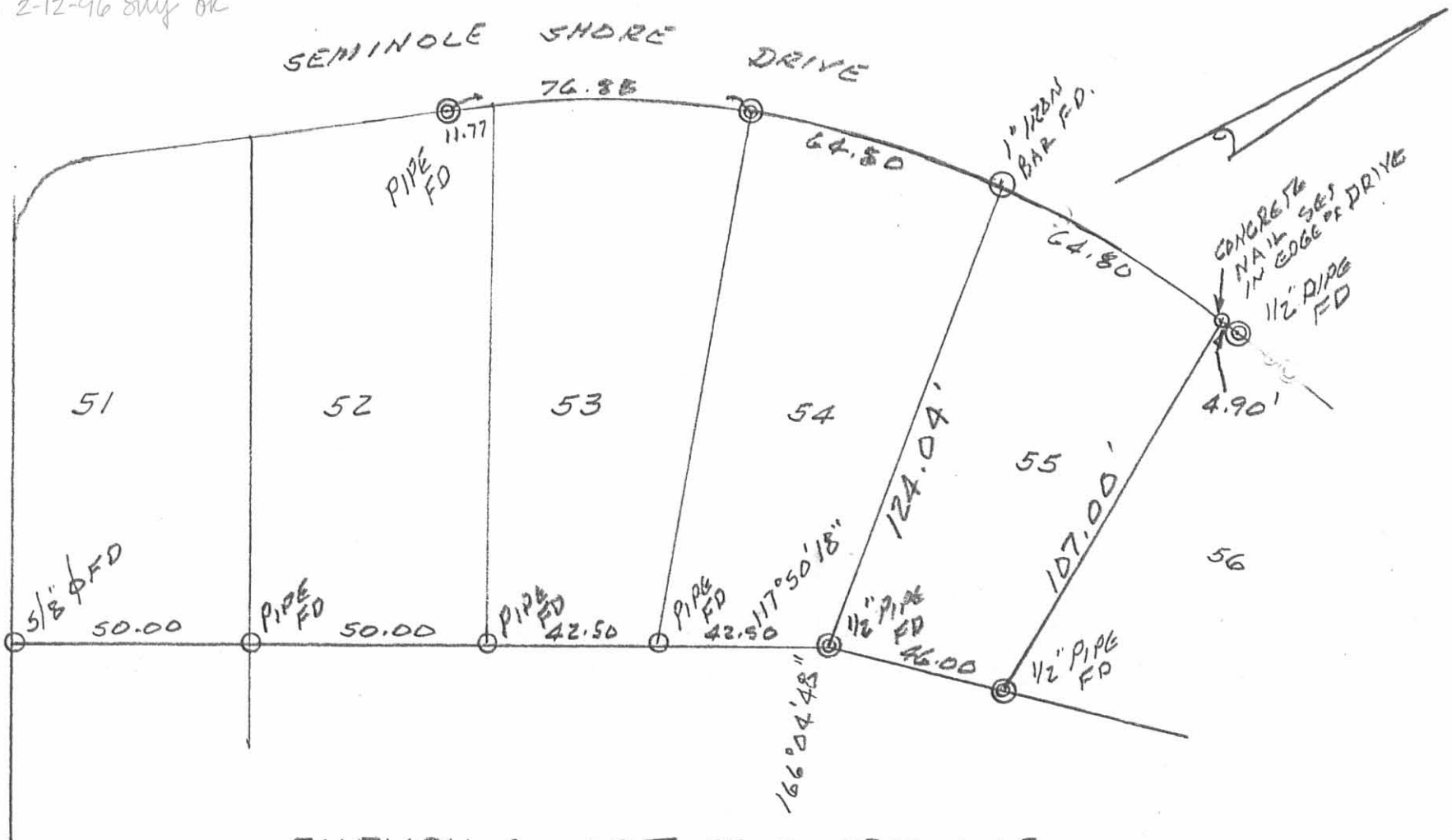
INDEXED ON MAP  
5191 IP

REV 10-6-05 SWM BUL

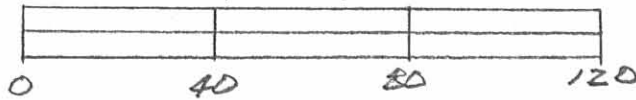
REC'D 2-12-96 SMy OK

IROQUOIS

SEMINOLE SHORE DRIVE



SURVEY OF LOT 55 OF SEMINOLE SHORE SUBDIVISION NO. 1, V.M.S. 12276, STOKES TOWNSHIP, LOGAN COUNTY, OHIO FOR GEORGE SCOTT. FEBRUARY 9, 1996 SCALE: 1"=40'



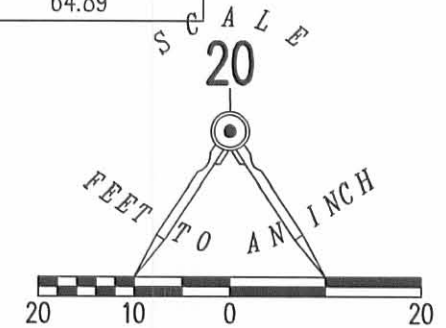
*Leslie H. Geeslin*  
 LESLIE H. GEESLIN  
 RUSHsylvania, OHIO  
 PH 513-468-2793

INDEXED ON MAP  
 5191 2P



REC'D 6-25-12 SMY OK

CURVE	DELTA ANGLE	RADIUS	ARC LENGTH	TANGENT	CHORD BEARING	CHORD LENGTH
C1	12°56'24"	287.94'	65.03'	32.65'	S 42°01'38" W	64.89'



SEMINOLE SHORES DRIVE (50')

0.03' ENCROACHMENT AT NAIL

SEMINOLE SHORES SUBDIVISION No. 1  
PLAT CABINET A, SLIDE 251

0.144 ACRE

SCREENED PORCH

30' SETBACK

CONCRETE DRIVE

1.53'

2.07' ENCROACHMENT

ARDALE L. JENNINGS AND CONNIE L. JENNINGS  
LOT 56  
O.R. 794, PG. 755  
TRACT I

S 44°10'23" E

106.97'

COVERED CAR PORT

33.7'

7.3'

12.3'

16.0'

26.4'

28.3'

5' SETBACK

20' SETBACK

5' SETBACK

5' SETBACK

5' SETBACK

5' SETBACK

5' SETBACK

5' SETBACK

5' SETBACK

5' SETBACK

5' SETBACK

5' SETBACK

5' SETBACK

5' SETBACK

JOSEPH T. SPARE  
AND CAROL A. SPARE  
LOT 55  
O.R. 840, PG. 575

VERNA BARTA  
LOT 54  
O.R. 450, PG. 432

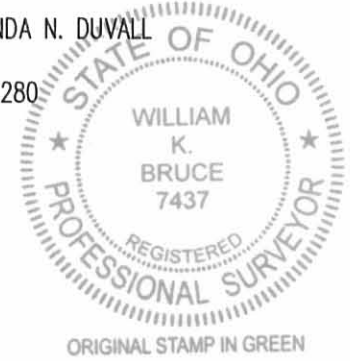
N 55°06'48" W

123.92'

45.11'

S 20°55'27" W

JAMES DUVALL AND RHONDA N. DUVALL  
LOT 59  
O.R. 964, PG. 280



RETRACEMENT AND LOCATION SURVEY OF  
JOSEPH T. SPARE AND CAROL A. SPARE  
LOT 55  
OFFICIAL RECORD 840, PAGE 575  
SEMINOLE SHORES SUBDIVISION No. 1  
PLAT CABINET A, SLIDE 251  
VIRGINIA MILITARY SURVEY 12276  
STOKES TOWNSHIP  
LOGAN COUNTY, OHIO

SURVEYED BY:

*William K. Bruce*

WILLIAM K. BRUCE  
PROFESSIONAL SURVEYOR 7437  
JUNE 18, 2012

COPYRIGHT 2012 BY:  
LEE SURVEYING & MAPPING CO., INC.  
117 North Madriver Street  
BELLEFONTAINE, OHIO 43311  
(937) 593-7335  
WWW.LSMINC.US  
surveys@lsminc.us

ADW D0612 53450612 L-5345-3

2 WORKING DAYS  
BEFORE YOU DIG  
CALL TOLL FREE 800-362-2764  
OHIO UTILITIES PROTECTION SERVICE

INDEXED ON MAP  
5191 4P

4-6-2020

**APPROVED**

CURVE	DELTA ANGLE	RADIUS	ARC LENGTH	CHORD BEARING	CHORD LENGTH
C1	12°56'23"	287.94'	65.03'	N 42°01'38" E	64.89'

- LEGEND:**
- ⊗ 1 INCH AXLE ROD FOUND
  - ⊙ 1/2 INCH IRON PIPE FOUND
  - ∨ CROW'S FOOT CHISELED IN CONCRETE
  - R/W = RIGHT-OF-WAY
  - C/L = CENTER-LINE

**OCCUPATION NOTE:**  
NO EVIDENCE OF OCCUPATION ALONG BOUNDARY LINES UNLESS OTHERWISE SHOWN

**BASIS FOR BEARINGS:**  
THE BASIS FOR BEARINGS, SHOWN HEREON, IS AN ASSUMED BEARING FOR THE COMMON LINE TO LOTS 54 AND 55, BEING N 55°06'48" W.

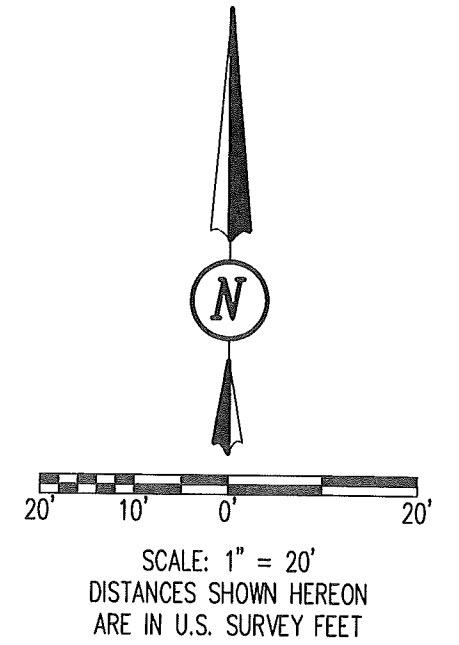
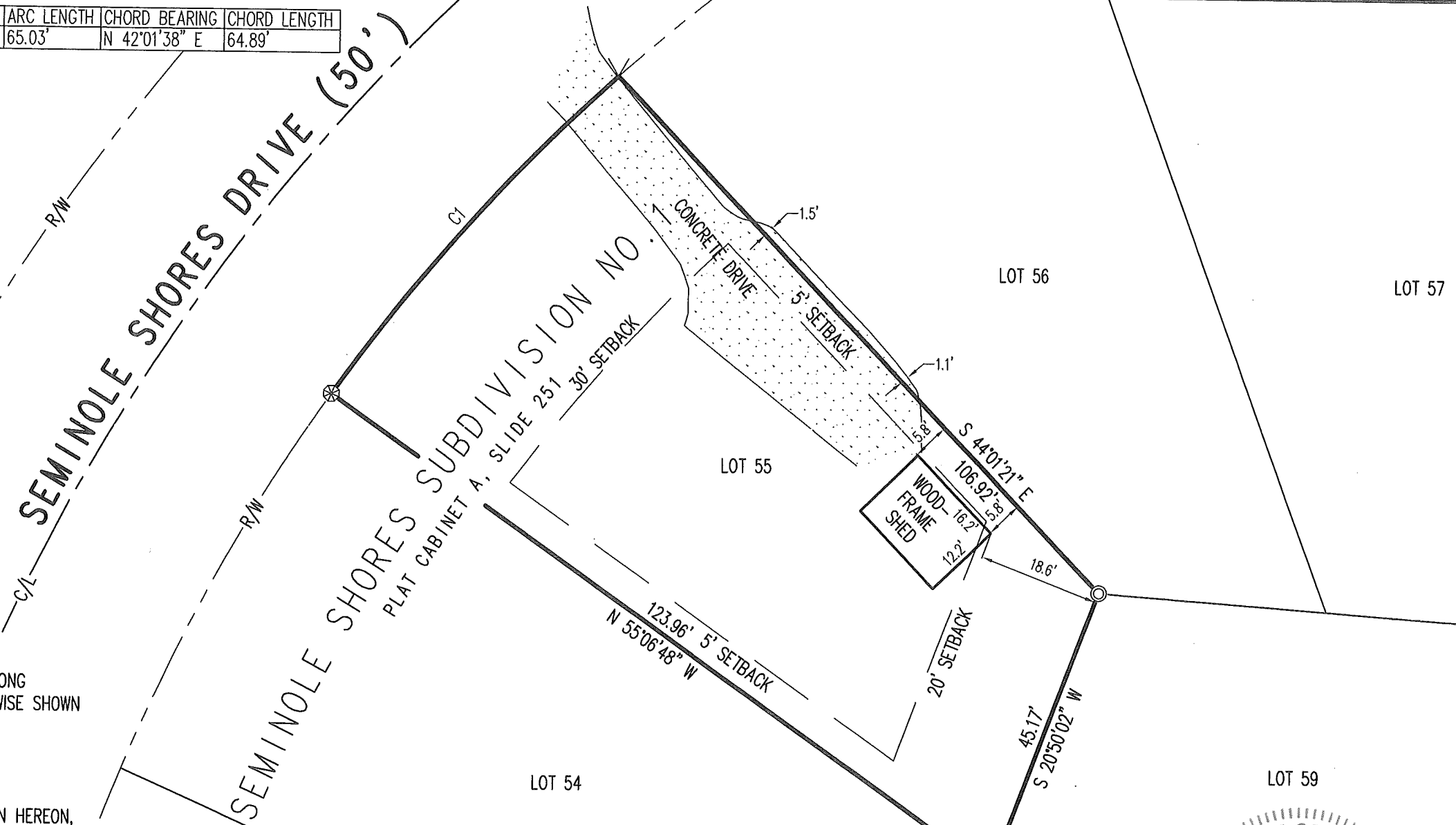
THIS SURVEY WAS PREPARED IN THE ABSENCE OF A COMPLETE AND ACCURATE TITLE SEARCH AND DOES NOT GUARANTEE TITLE.

COPYRIGHT 2020 BY:

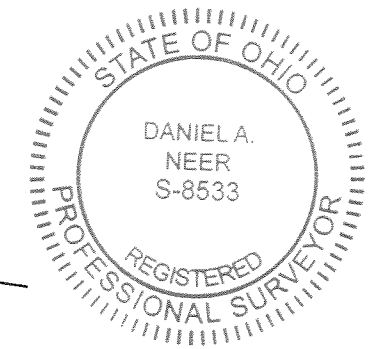


117 N. Madriver Street • Bellefontaine, OH 43311  
(937) 593-7335 • www.dlz.com  
Project #2021-2031.00REV1

**RETRACEMENT SURVEY**  
LOT 55  
SEMINOLE SHORES SUBDIVISION NO. 1  
PLAT CABINET A, SLIDE 251  
VIRGINIA MILITARY SURVEY 12276  
STOKES TOWNSHIP  
LOGAN COUNTY, OHIO



**DEED & SURVEY REFERENCES:**  
SEMINOLE SHORES SUBDIVISION NO. 1  
PLAT CABINET A, SLIDE 251  
LOGAN COUNTY ENGINEER'S MAP ROOM  
FILES: 5191 AND 2606



*Daniel A. Neer*  
DANIEL A. NEER  
PROFESSIONAL SURVEYOR NO. 8533  
MARCH 12, 2020

DRAWN BY:	DESCRIPTION	REV. NO.	DATE
KSS			3/15/2020
KSS	REVISED TO SHOW LOCATION OF SHED	1	3/25/2020

INDEXED ON MAP  
5191