

C. Hull Description
September, 1972

Being situated in Stokes Township, Logan County, Ohio; and being a part of V.M.S. #12276; and being in Turkey Foot Park.

Beginning at a iron in the center of State Route 702 that is known as Station 38 + 00.

Thence with the center of State Route 702 S 30° - 49'W 84.0 feet to an iron.

Thence with the north side of K. Holcomb's 0.07 acre tract S 50° - 41'E 95.3 feet to a iron.

Thence with the east side of said 0.07 acre tract S 30° - 49'W 44.0 feet to a iron.

Thence S 50° - 41'E 7.75 feet to a iron in the State Line as shown on the County Engineer's Map J - 4 - A.

Thence with the State Line N 64° - 10'E 27.5 feet to an iron at Monument 19.

Thence again with the State Line S 83° - 30'E 145.6 feet to a iron at Monument 20.

Thence again with the State Line S 11° - 57'W 74.0 feet to a iron at Monument 21.

Thence again with the State Line S 38° - 03'E 83.9 feet to a iron in the west side of a drive.

Thence with the west side of said drive N 34° - 45'E 50.35 feet to a iron.

Thence with the south side of R. Billet's 0.07 acre tract N 53° - 32'W 80.0 feet to a iron.

Thence with the west line of R. Billet's land N 34° - 45'E 80.0 feet to a iron.

Thence with W. Drews 0.14 acre tract N 53° - 30'W 80.0 feet to a iron.

Thence with Drews west line N 34° - 48'E 120.0 feet to a iron in the south side of a drive.

Thence with the south side of said drive N 48° - 41'W 92.5 feet to a iron.

Thence again with said drive N 54° - 13'W 73.25 feet to a iron in center of State Route 702.

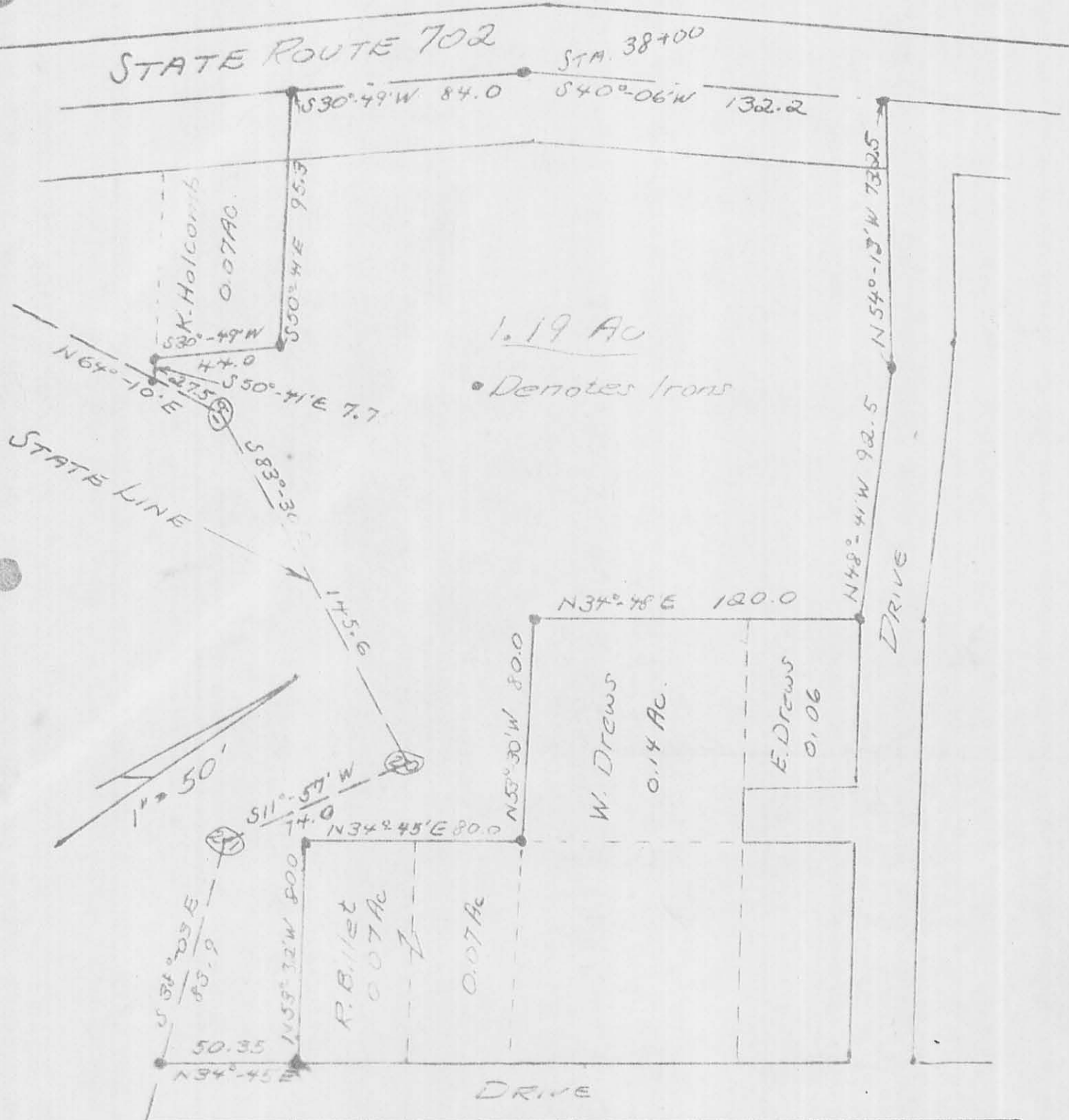
Thence with the center of State Route 702 S 40° - 06'W 132.2 feet to the place of beginning.

Containing 1.19 acres more or less.

Owen K. Shirk
Surveyor 4271

INDEXED ON MAP
5190 1D

FOR C. HULL DESCRIPTION
 STOKES TWP., LOGAN COUNTY, OHIO
 V.M.S. 12276, TURKEY FOOT PARK



1.19 AC
 • Denotes Irons

Owen K. Shirk
 Surveyor 4271
 Sept., 1972

(5190) 1P

INDEXED ON MAP