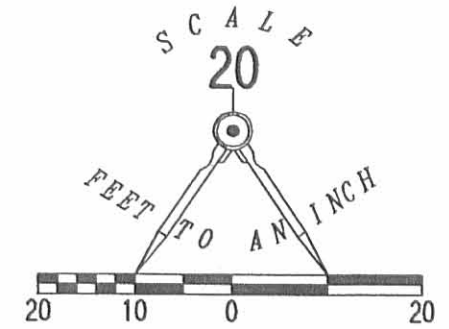


REC'D 10-21-05 SUM CLK

LEGEND:

- ⊙ 3/4 INCH IRON PIPE FOUND
- MAG NAIL SET
- ⊙ 1 INCH IRON PIPE FOUND
- 5/8 INCH IRON ROD SET



MIDLAKE SUBDIVISION NO. 3
PLAT CABINET A, SLIDE 343

LOT 57

LOT 56

LOT 55

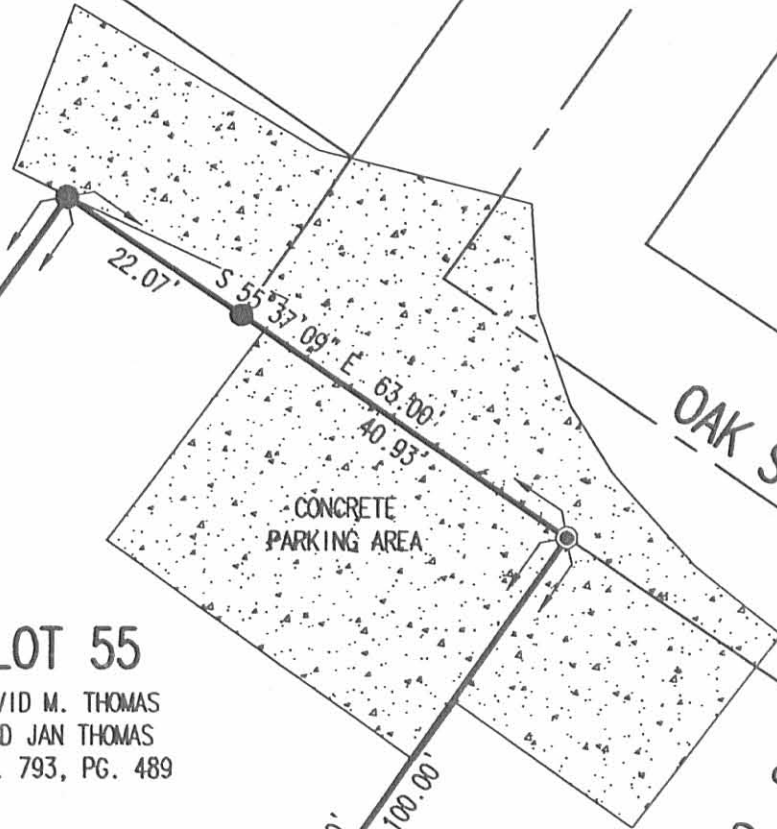
DAVID M. THOMAS
AND JAN THOMAS
O.R. 793, PG. 489

LOT 42

MIDLAKE SUBDIVISION NO. 2
PLAT CABINET A, SLIDE 327

OAK STREET (30')

BUCKEYE DRIVE (50')



RETRACEMENT SURVEY OF THE
DAVID M. THOMAS
AND JAN THOMAS
LOT 55
MIDLAKE SUBDIVISION NO. 3
PLAT CABINET A, SLIDE 343
OFFICIAL RECORD 793, PAGE 489
STOKES TOWNSHIP
LOGAN COUNTY, OHIO

SURVEYED BY:

[Signature]
JEFFREY I. LEE
PROFESSIONAL SURVEYOR 6359
OCTOBER 18, 2005



ORIGINAL STAMP IN GREEN

COPYRIGHT 2005 BY:
LEE SURVEYING & MAPPING CO., INC.
117 North Madriver Street
BELLEFONTAINE, OHIO 43311
(937) 593-7335
KSR D1005 4140105 L-4140-3

NOTE:

DISTANCES TO CENTER-LINE OF CHANNEL
FROM MAP RECORDED IN PLAT CABINET A, SLIDE 343.

SEE NOTE
APPROXIMATE CENTER-LINE OF CHANNEL
CHANNEL

2 WORKING DAYS

BEFORE YOU DIG

CALL TOLL FREE 800-362-2764

OHIO UTILITIES PROTECTION SERVICE

INDEXED ON MAP
5033 IP

REV'D 11-19-03 SUM OK

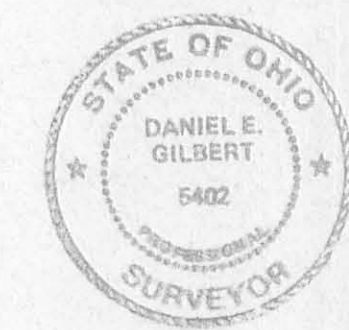
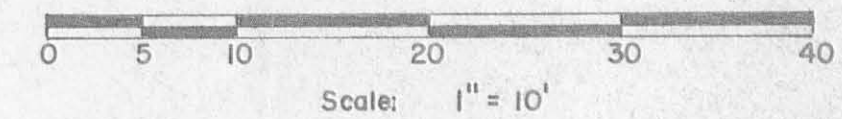
CHANNEL

Lot 37

Lot 36

Lot 35

WALNUT ST. - 30'



REFERENCE:
MIDLAKE SUBDIVISION No. 2
Plat Cab. A, Slide 327 (1-23-1956).

SYMBOLS:
 ○ - Magnetic P. K. Nails Set.
 ○ - 5/8" Rebar Id.
 ● - 5/8" x 30" Rebars Set.

Survey of Lot No. 36 - Midlake Subdivision No. 2,
V.M.S. No. 12276, Tecumseh Island,
Stokes Township, Logan County, Ohio.

SCALE: 1" = 10'	APPROVED BY: [Signature]	DRAWN BY: DEG
DATE: 10-18-2003		REVISED:

Daniel E. Gilbert, P.S.
Reg. Sur. No. 5402

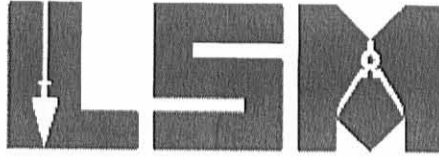
DRAWING NUMBER:
2003-020

INDEXED ON MAP 5033 2P

Lee Surveying and Mapping Co., Inc.

Land Surveys • Topography • Subdivisions • Construction Layout

117 N. Madriver St.
Bellefontaine OH 43311



Phone: (937) 593-7335
Fax: (937) 593-7444
surveys@lsminc.us

LANGE 0.230 ACRE

Lying in Stokes Township, Logan County, Ohio.

Being all of the R. Lewis Lange and Debora L. Lange Lots 123 and 124 of Tecumseh Island (Plat Cabinet A, Slide 225) as deeded and described in Official Record 841, Page 589, Parcel I and Parcel II of the Logan County Records of Deeds and being more particularly described as follows:

Beginning on a 5/8 inch iron rod set on the intersection of the northwesterly right-of-way of Buckeye Drive (50 feet wide) and the southwesterly right-of-way of Oak Street (30 feet wide) at the east corner of Lot 124.

THENCE, with the northwesterly right-of-way of Buckeye Drive and the southeasterly lines of Lots 124 and 123, S 34°-36'-00"W, a distance of 100.05 feet to a 5/8 inch iron rod set at the south corner of Lot 123.

THENCE, with the southwesterly line of Lot 123 and the northeasterly line of Lot 101, N 55°-24'-20" W, a distance of 99.95 feet to a point in a channel at the west corner of Lot 123, passing a 5/8 inch iron rod found at 70.00 feet.

THENCE, with the northwesterly lines of Lots 123 and 124 and the southeasterly line of Lot 40 of Midlake Subdivision No. 2 (Plat Cabinet A, Slide 327), N 34°-34'-14"E, a distance of 100.00 feet to a 5/8 inch iron rod found on the southwesterly right-of-way of Oak Street, at the north corner of Lot 124.

THENCE, with the southwesterly right-of-way of Oak Street and the northeasterly line of Lot 124, S 55°-26'-05"E, a distance of 100.00 feet to the point of beginning.

Containing 0.230 acre.

The basis for bearings is the center-line of Buckeye Drive, being S 34°-36'-00"W, and all other bearings are from angles and distances measured in a field survey by Lee Surveying and Mapping Co., Inc. on May 19, 2009.



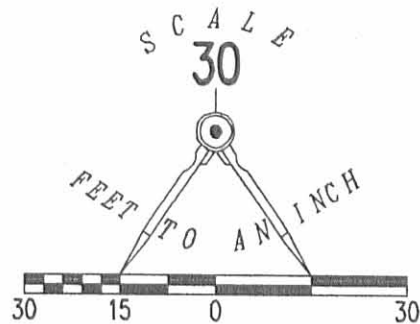
ORIGINAL STAMP IN GREEN

Description prepared by:

William K. Bruce
Professional Surveyor 7437
May 20, 2009

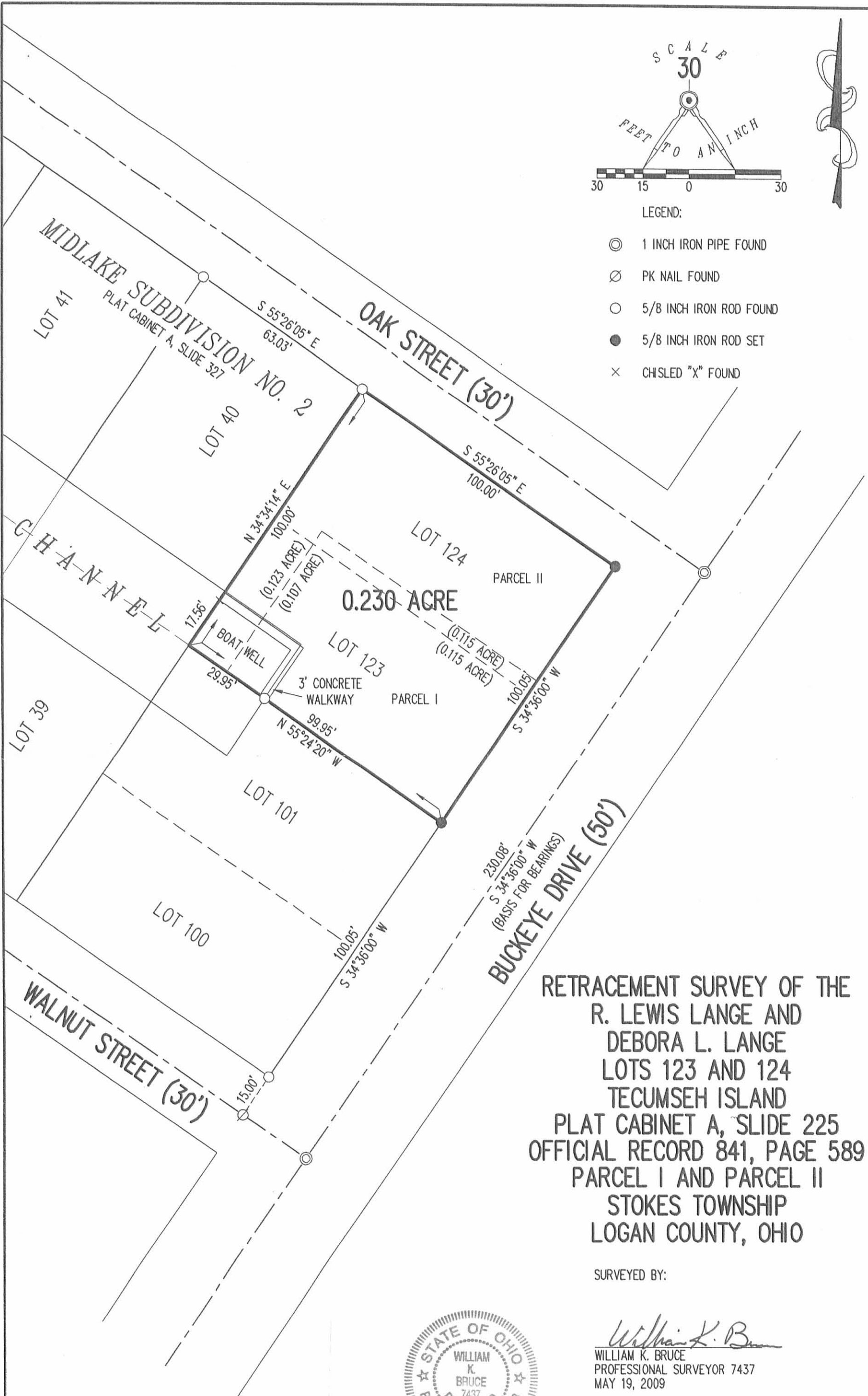
4791059





LEGEND:

- ⊙ 1 INCH IRON PIPE FOUND
- ⊗ PK NAIL FOUND
- 5/8 INCH IRON ROD FOUND
- 5/8 INCH IRON ROD SET
- × CHISLED "X" FOUND



RETRACEMENT SURVEY OF THE
 R. LEWIS LANGE AND
 DEBORA L. LANGE
 LOTS 123 AND 124
 TECUMSEH ISLAND
 PLAT CABINET A, SLIDE 225
 OFFICIAL RECORD 841, PAGE 589
 PARCEL I AND PARCEL II
 STOKES TOWNSHIP
 LOGAN COUNTY, OHIO

SURVEYED BY:

William K. Bruce
 WILLIAM K. BRUCE
 PROFESSIONAL SURVEYOR 7437
 MAY 19, 2009

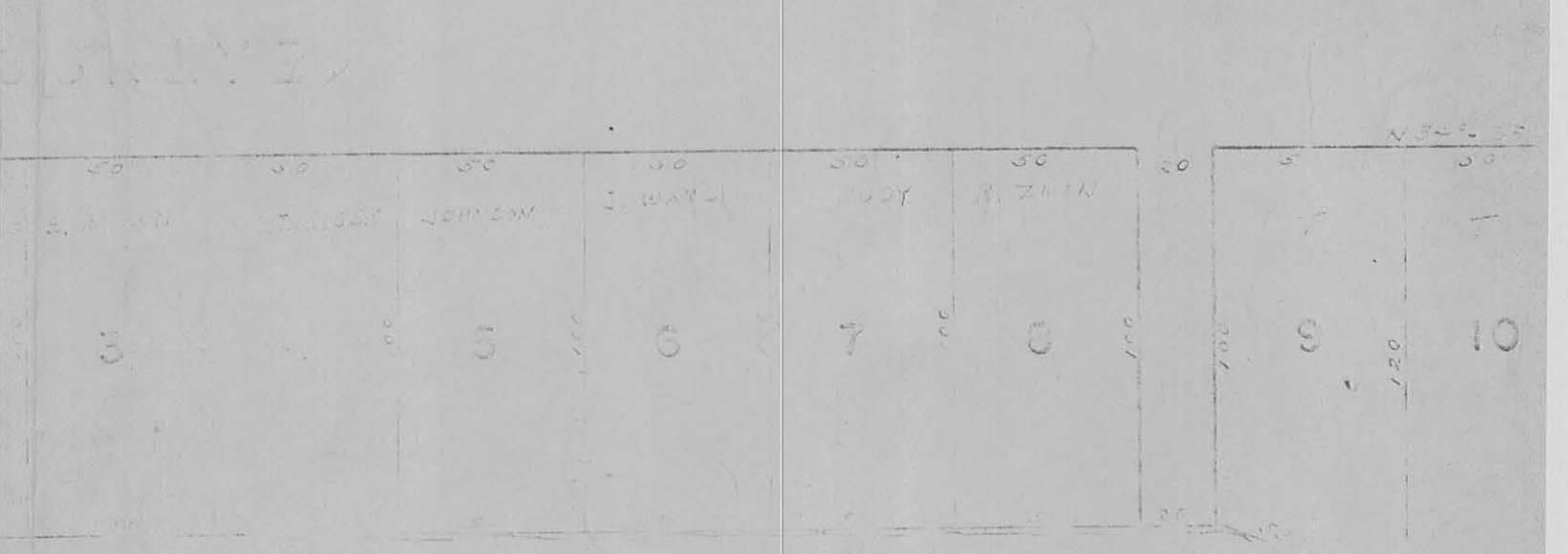
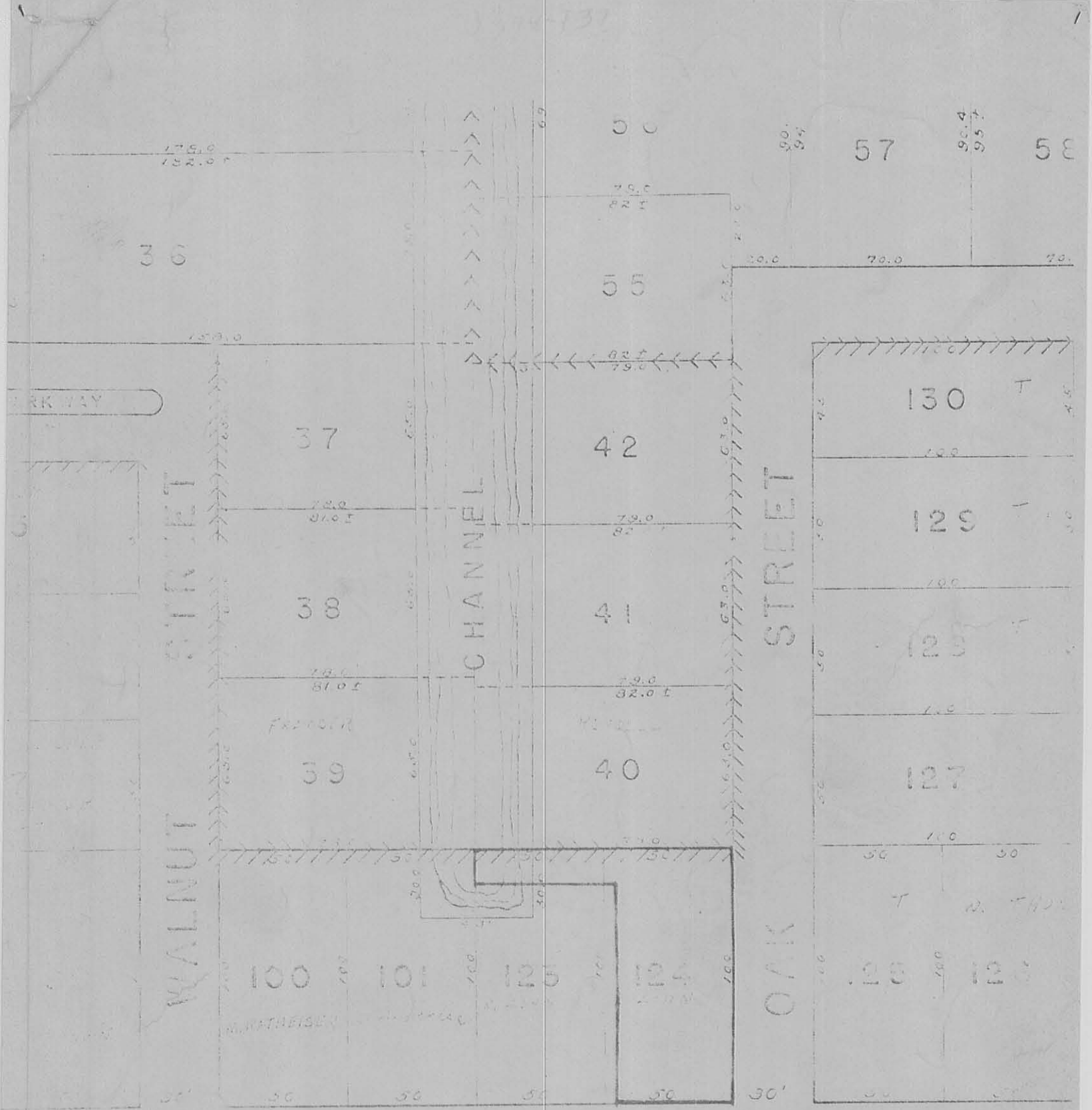


ORIGINAL STAMP IN GREEN

COPYRIGHT 2009 BY:
LEE SURVEYING & MAPPING CO., INC.
 117 North Madriver Street
 BELLEFONTAINE, OHIO 43311
 (937) 593-7335
 surveys@lsminc.us
 KSS D0509 4791059 L-4791-3

2 WORKING DAYS
BEFORE YOU DIG
 CALL TOLL FREE **800-362-2764**
 OHIO UTILITIES PROTECTION SERVICE.

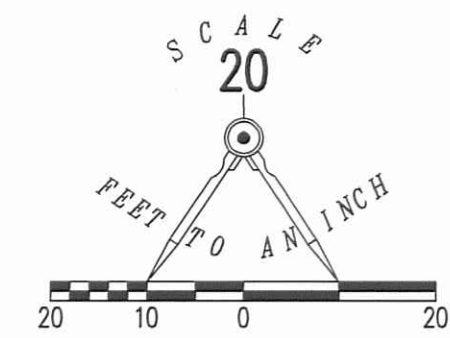
INDEXED ON MAP
 5033 3P



INDEXED ON MAP
5033 4P

5-29-13

APPROVED

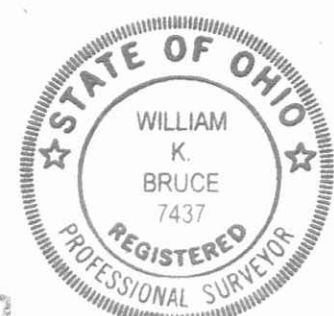


- LEGEND
- 5/8 INCH IRON ROD FOUND
 - MAG NAIL SET

RETRACEMENT SURVEY OF
 LOT 58
 MIDLAKE SUBDIVISION NO. 3
 PLAT CABINET A, SLIDE 343
 VIRGINIA MILITARY SURVEY 12276
 STOKES TOWNSHIP
 LOGAN COUNTY, OHIO

SURVEYED BY:

William K. Bruce
 WILLIAM K. BRUCE
 PROFESSIONAL SURVEYOR 7437
 MAY 21, 2013



ORIGINAL STAMP IN GREEN

INDEXED ON MAP
 5033 SP

COPYRIGHT 2013 BY:
LEE SURVEYING & MAPPING CO., INC.
 117 North Madriver Street
 BELLEFONTAINE, OHIO 43311
 (937) 593-7335
 WWW.LSMINC.US
 surveys@lsminc.us
 ADW D0513 55370513 L-5537-3

2 WORKING DAYS
BEFORE YOU DIG
 CALL TOLL FREE **800-362-2764**
 OHIO UTILITIES PROTECTION SERVICE

- LEGEND:**
- ⊙ MAG NAIL FOUND
 - ⊗ NAIL AND WASHER FOUND
 - 5/8 INCH IRON ROD FOUND
 - MAG NAIL SET
 - R/W = RIGHT-OF-WAY
 - C/L = CENTER-LINE
 - X— FENCE LINE
 - N.T.S. = NOT TO SCALE
 - P/L = PROPERTY LINE
 - R/W = RIGHT-OF-WAY
 - C/L = CENTER-LINE

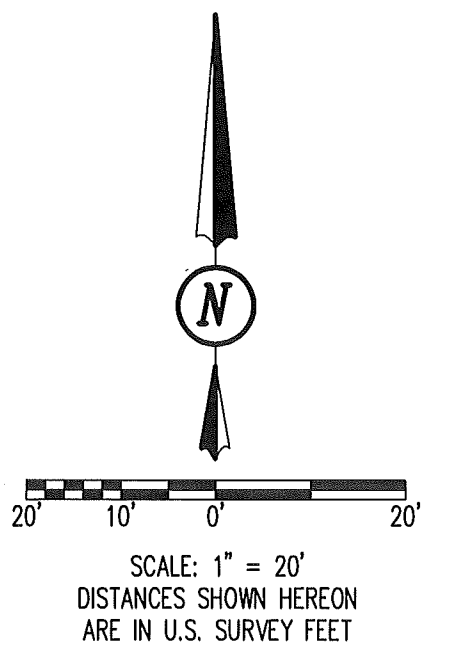
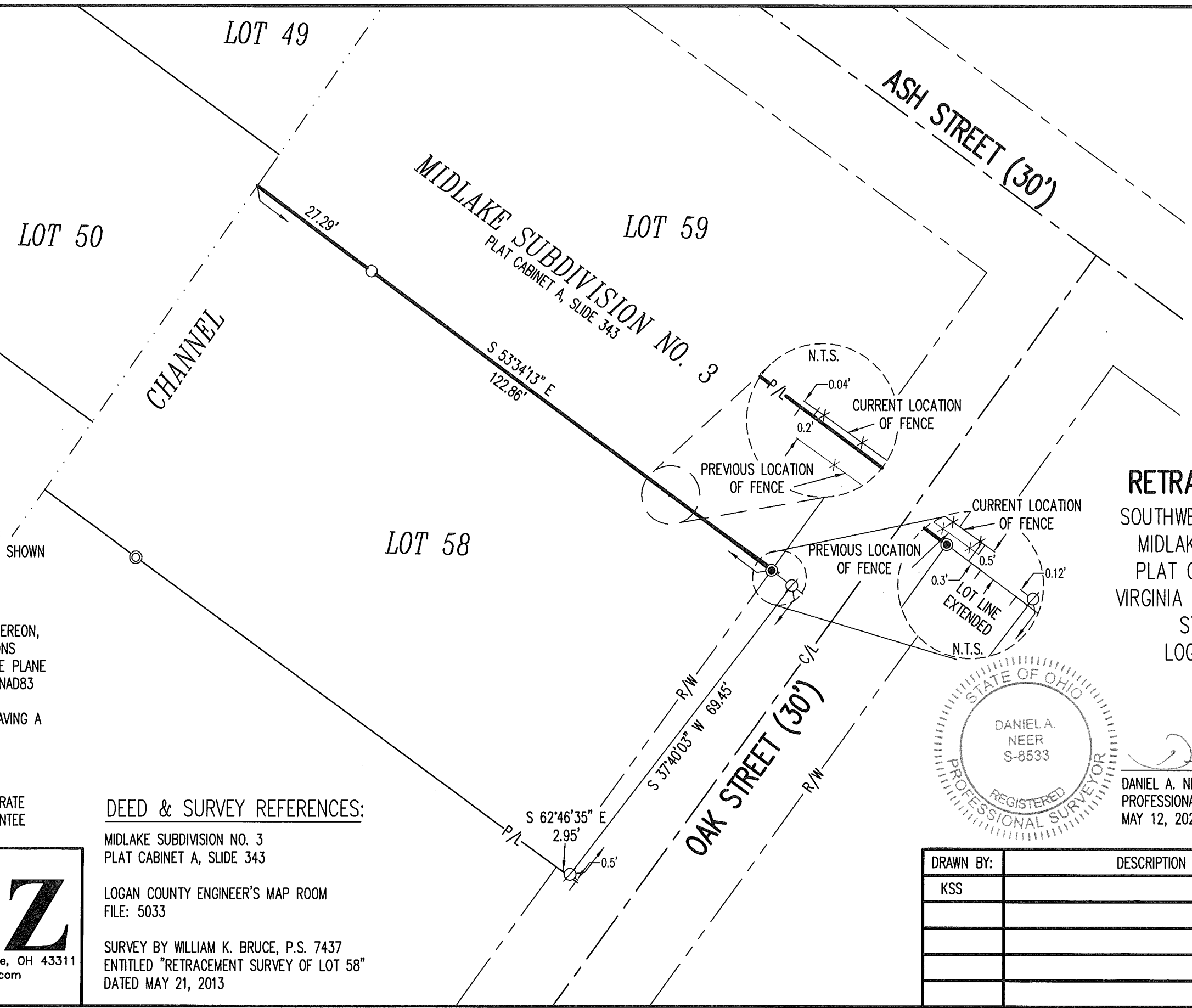
OCCUPATION NOTE:
 NO EVIDENCE OF OCCUPATION ALONG
 BOUNDARY LINES UNLESS OTHERWISE SHOWN

BASIS FOR BEARINGS:
 BEARINGS AND DISTANCES, SHOWN HEREON,
 ARE DERIVED FROM GPS OBSERVATIONS
 BASED ON GRID NORTH, OHIO STATE PLANE
 COORDINATE SYSTEM, NORTH ZONE, NAD83
 (2011, EPOCH 2010), WITH THE
 SOUTHWESTERLY LINE OF LOT 59, HAVING A
 BEARING OF S 53°34'13" E.

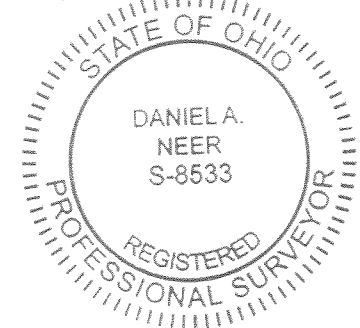
THIS SURVEY WAS PREPARED IN THE
 ABSENCE OF A COMPLETE AND ACCURATE
 TITLE SEARCH AND DOES NOT GUARANTEE
 TITLE.

DEED & SURVEY REFERENCES:
 MIDLAKE SUBDIVISION NO. 3
 PLAT CABINET A, SLIDE 343
 LOGAN COUNTY ENGINEER'S MAP ROOM
 FILE: 5033
 SURVEY BY WILLIAM K. BRUCE, P.S. 7437
 ENTITLED "RETRACEMENT SURVEY OF LOT 58"
 DATED MAY 21, 2013

COPYRIGHT 2020 BY:
DLZ
 117 N. Madriver Street • Bellefontaine, OH 43311
 (937) 593-7335 • www.dlz.com
 Project #2021-2059.00



RETRACEMENT SURVEY
 SOUTHWEST CORNER OF LOT 59
 MIDLAKE SUBDIVISION NO. 3
 PLAT CABINET A, SLIDE 343
 VIRGINIA MILITARY SURVEY 12276
 STOKES TOWNSHIP
 LOGAN COUNTY, OHIO



DANIEL A. NEER
 PROFESSIONAL SURVEYOR NO. 8533
 MAY 12, 2020

DRAWN BY:	DESCRIPTION	REV. NO.	DATE
KSS			5/12/2020

INDEXED ON MAP
 5033

6-9-2021

APPROVED

LEGEND:

- ⊗ RAILROAD SPIKE FOUND
- ⊙ MAGNETIC NAIL FOUND
- MAGNETIC NAIL SET
- 5/8 INCH IRON REBAR FOUND
- 5/8 INCH BY 30 INCH IRON REBAR SET WITH PLASTIC I.D. CAP STAMPED "DLZ OHIO INC."

R/W = RIGHT-OF-WAY
 C/L = CENTER-LINE
 O.R. = OFFICIAL RECORD
 PG. = PAGE
 P.C. = PLAT CABINET
 SL. = SLIDE

BASIS FOR BEARINGS:

BEARINGS AND DISTANCES, SHOWN HEREON, ARE DERIVED FROM GPS OBSERVATIONS BASED ON GRID NORTH, OHIO STATE PLANE COORDINATE SYSTEM, NORTH ZONE, NAD83 (2011, EPOCH 2010), WITH THE CENTER-LINE OF EAST WALNUT STREET, HAVING A BEARING OF N 53°39'14" W.

THIS SURVEY WAS PREPARED IN THE ABSENCE OF A COMPLETE AND ACCURATE TITLE SEARCH AND DOES NOT GUARANTEE TITLE.

SURVEY REFERENCE:

LOGAN COUNTY ENGINEER'S MAP
 ROOM FILE: 5033

OCCUPATION NOTE:

NO EVIDENCE OF OCCUPATION
 ALONG BOUNDARY LINES UNLESS
 OTHERWISE SHOWN

COPYRIGHT 2021 BY:



117 N. Madriver Street • Bellefontaine, OH 43311
 (937) 593-7335 • www.dlz.com
 Project #2121-2078.00

MIDLAKE SUBDIVISION NO. 2

PLAT CABINET A, SLIDE 327

TECUMSEH ISLAND

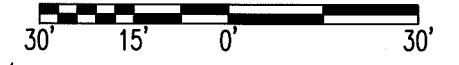
PLAT CABINET A, SLIDE 225

CHANNEL
(PUBLIC PASSAGEWAY
P.C. A, SL. 327)

OAK STREET (30') (PUBLIC)
R/W C/L

EAST WALNUT STREET (30') (PUBLIC)
R/W C/L

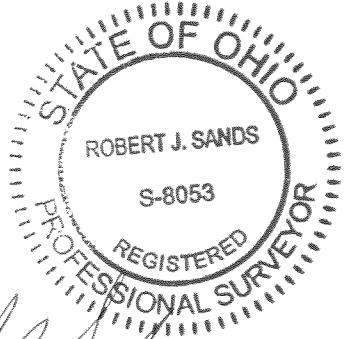
BUCKEYE DRIVE (50') (PUBLIC)
R/W C/L



SCALE: 1" = 30'
 DISTANCES SHOWN HEREON
 ARE IN U.S. SURVEY FEET

RETRACEMENT SURVEY

LOT 39
 MIDLAKE SUBDIVISION NO. 2
 VIRGINIA MILITARY SURVEY 12276
 STOKES TOWNSHIP
 LOGAN COUNTY, OHIO



Robert J. Sands
 ROBERT J. SANDS
 PROFESSIONAL SURVEYOR NO. 8053
 MAY 27, 2021

DRAWN BY:	DESCRIPTION	REV. NO.	DATE
KSS			6/2/2021

INDEXED ON MAP
5033