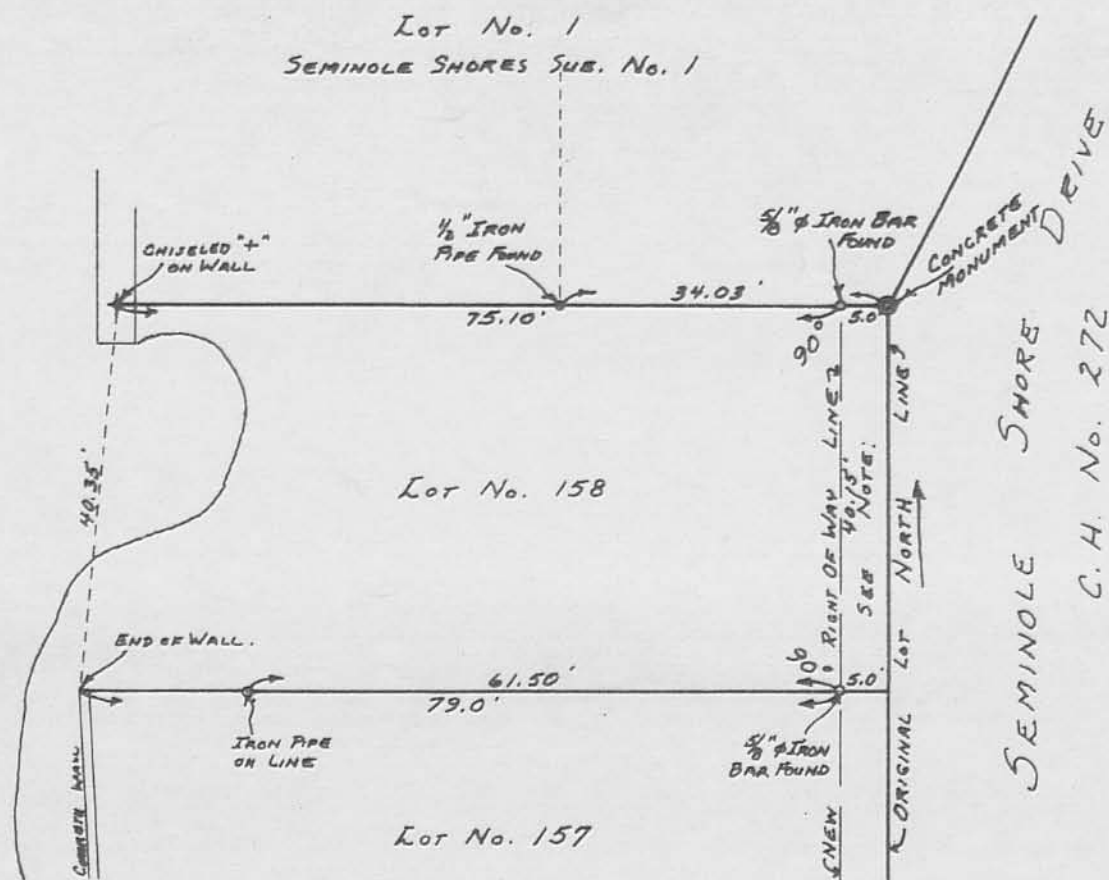


INDIAN LAKE



NOTE:

SEMINOLE SHORE DRIVE INCREASED
TO 50', SEPTEMBER 1, 1956.
COMMISSIONERS JOURNAL I-I-M.F.
PAGES 188 & 195

REFERENCES:

SUB. A. SEMINOLE ISLAND.
PLAT BOOK C VOL. 3 PAGE 11.
RESURVEY LOTS 151 TO 158
PLAT BOOK C VOL. 3 PAGES 35-36
ALSO J-65, LO. CO. ENG. OFFICE.

EICHER SURVEY
LOT No. 158
SEMINOLE SUB. A- SEMINOLE ISLAND
V.M.S. No. 12276
STOKES TOWNSHIP
LOGAN COUNTY, OHIO
SEPTEMBER 20, 1969

SURVEYED AND PLATTED BY
DANIEL E. GILBERT, P.S.
REG. SUR. No. 5402
428 N. MADRIVER ST.
BELLEFONTAINE, OHIO 43311

INDEXED ON MAP

4599 IP

SCALE: 1" = 20'