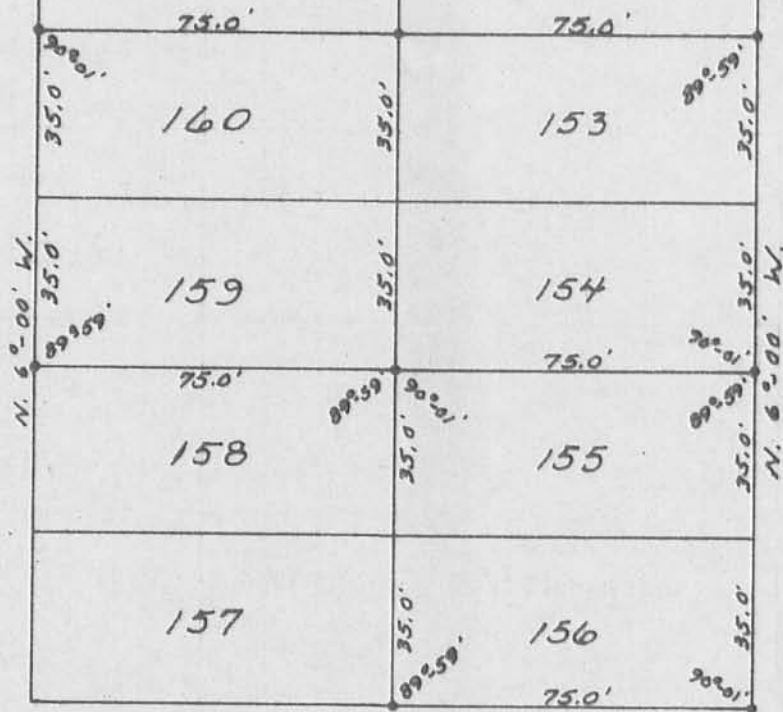


POCAHONTAS PATH - 35'

BLACK HAWK PATH - 35'



BLUE JACKET PATH - 35'

o - 5/8" φ IRON BARS SET.

REFERENCE:

CHIPPEWA PARK No. 1  
PLAT BOOK B. VOL. 2 PAGE 126-127.

SURVEY OF  
Lots 153, 154, 155, 156, 159, 160  
CHIPPEWA PARK No. 1.

V.M.S. No. 12276  
STOKES TOWNSHIP  
LOGAN COUNTY, OHIO

AUGUST 2, 1969

SCALE: 1" = 40'

SURVEYED AND PLATTED BY:  
DANIEL E. GILBERT, P.S.  
REG. SUR. No. 5402  
428 N. MADRIVER ST.  
BELLEFONTAINE, OHIO 43311



INDEXED ON FILE

IP (4569)