

SURVEY OF ISLAND VIEW STREETS
 FOR
 STOKES TOWNSHIP TRUSTEES
 MAY, 1969
 SCALE 1"=20'
 CHESTER R. KURTZ
 LOGAN COUNTY ENGINEER

● = IRON FOUND
 ○ = IRON BAR SET
 F.B. 706 Ps. 66, 67, 68

LESLIE H. GEESLIN
 REG. SURVEYOR 5248
 LOGAN CO. ENG. DEPT.

COUNTY
 4544
 INDEX NO.

FB 706

SURVEY OF
ISLAND VIEW STREETS

- A = 3/4" PIPE FD
 - B = 1 1/2" PIPE FD (USED FOR BEARING OF COLLINGWOOD EAST)
 - C = 1 1/2" PIPE FD (USED FOR BEARING OF COLLINGWOOD E.)
 - D = EVIDENCE OF OLD HUB. NORTH & SOUTH
 - E = 5/8" # FD. (F.B. D-2 Pg 67 F.B. D-5 P.15)
 - F = 5/8" # FD " " " " "
 - G = 5/8" # FD " " " " "
 - H = 1 1/2" PIPE FD. " " " " "
 - J = R.R. SPIKE FD
- NOTE POINTS B, D, H AND J USED TO
SET CENTERLINE OF BASSWOOD.
- K = 1 1/2" PIPE FD.
 - L = 1 1/2" PIPE FD
 - M = 3/4" PIPE FD
- NOTE POINTS M, H, J, K AND L ARE
ON A STRAIGHT LINE
- N = 3/4" PIPE FD.
 - O = 5/8" # FD (F.B. D-2 Pg 67)
 - P = 5/8" # FD (F.B. D-2 Pg 67)

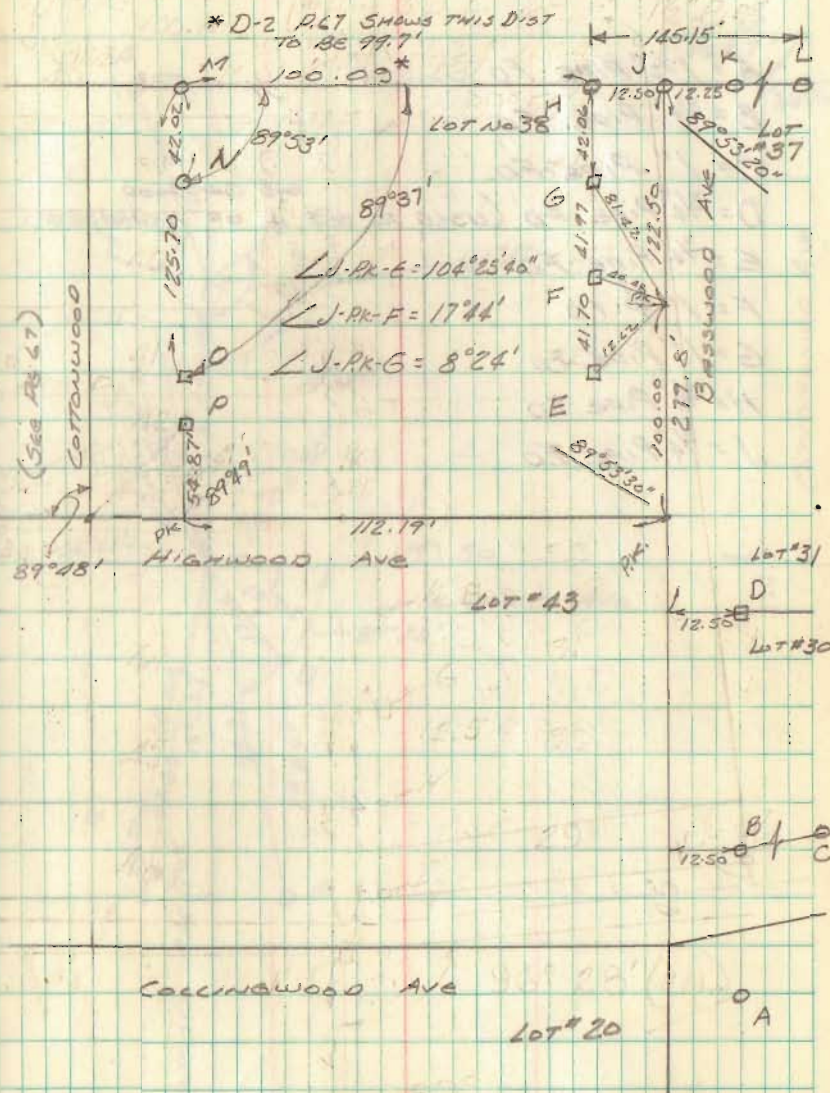
ADDED ON MAP

4544

L. GEEGLIN
C. NICHOLS &
C. RICKETTS

MAY, 1969

83



FB 706

ISLAND VIEW STREETS (CONT)

A = 1 1/2" PIPE FD

B = 3/4" PIPE FD

C = 1" PIPE FD

D = 3/4" PIPE FD (USED TO SET ϕ OF HIGHWOOD AND OAKWOOD

E = 3/4" PIPE FD

F = 1" ϕ FD

G = 1" PIPE FD

H = 3/4" PIPE FD

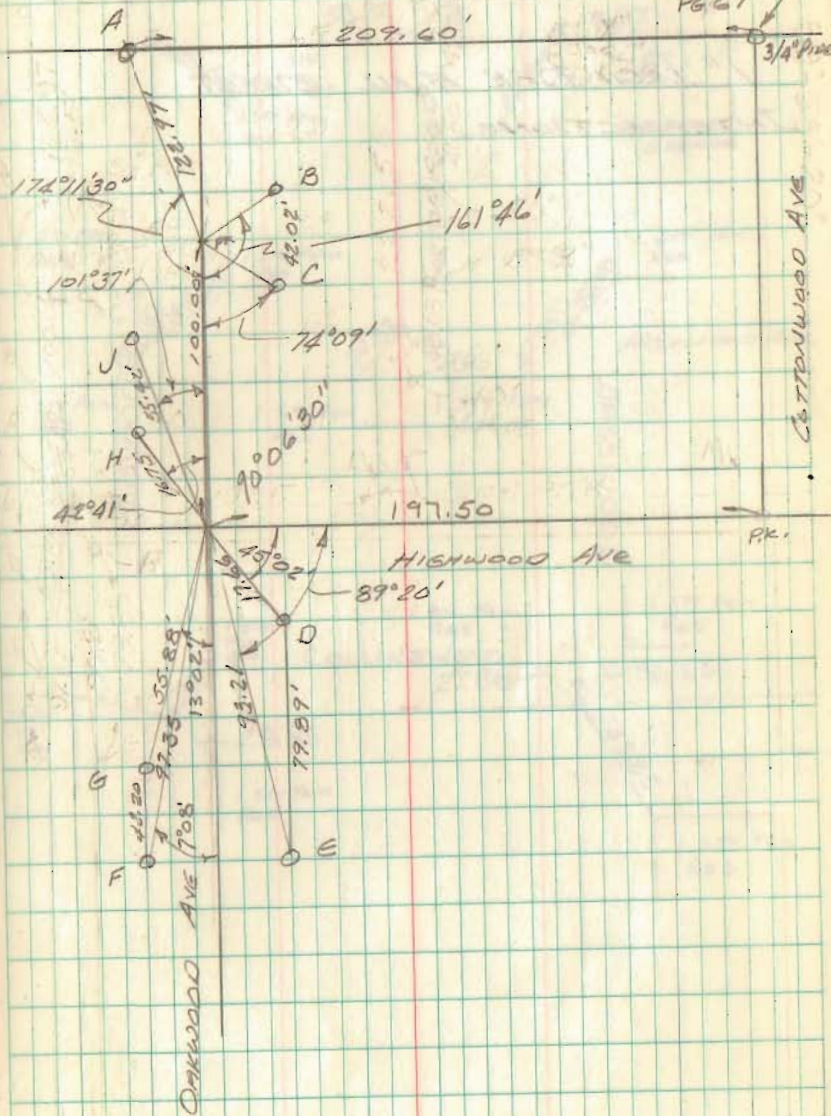
J = 3/4" PIPE FD

GEESLIN
NICHOLS T
RICKETTS

MAY 1969

67

PT M
Pg. 67



FB 706

ISLAND VIEW STREETS REFERENCES

1" IRON BAR AT ALL STREET INTERSECTIONS.

