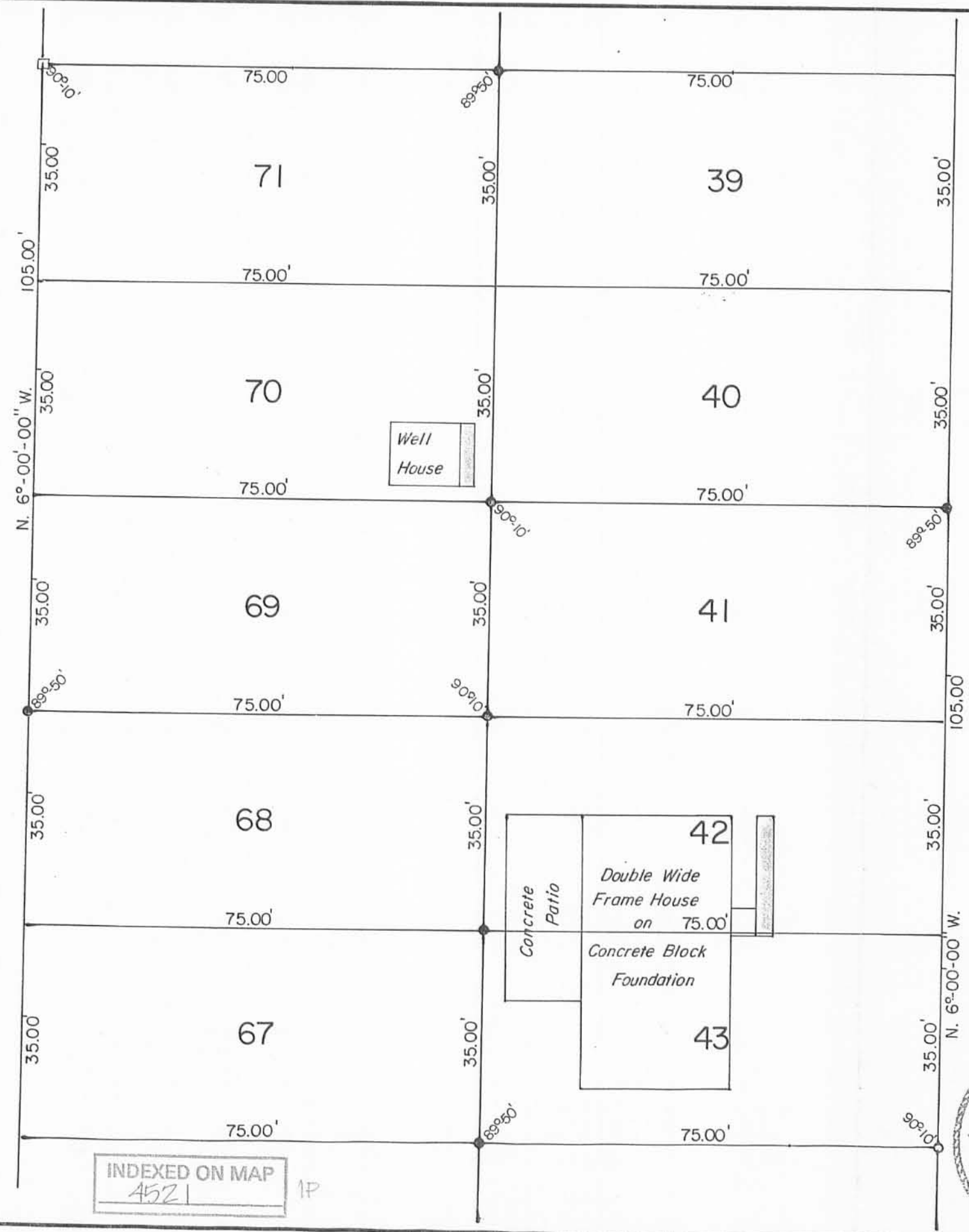


REC'D 12-5-94 *amy dk*

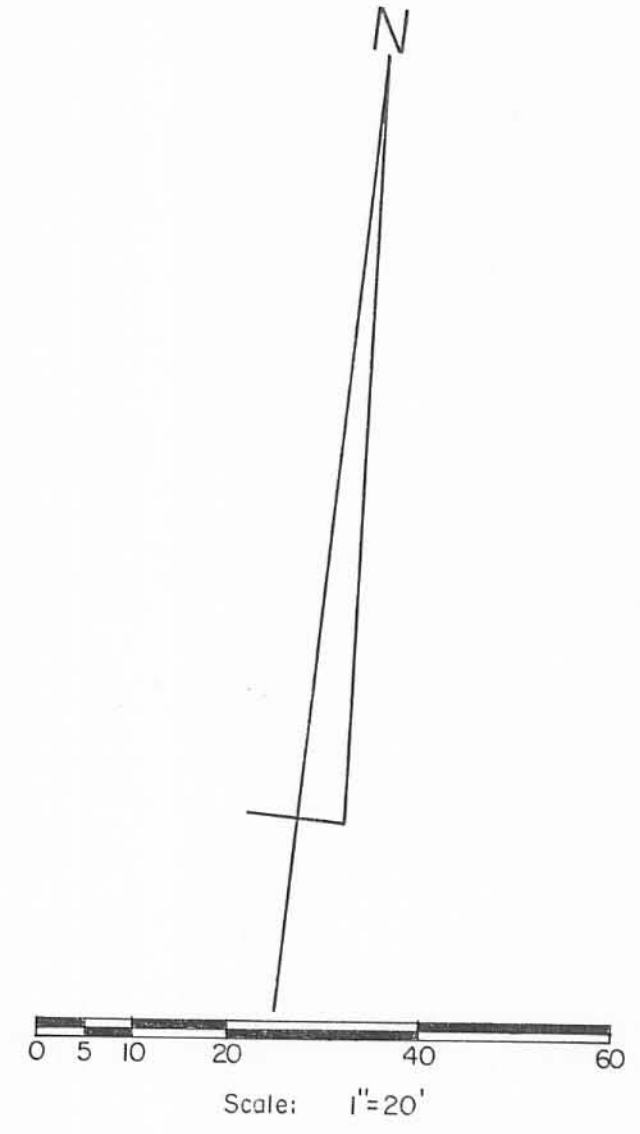
BLACK HAWK PATH - 35'



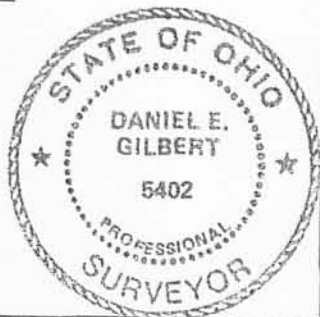
INDEXED ON MAP  
4521

1P

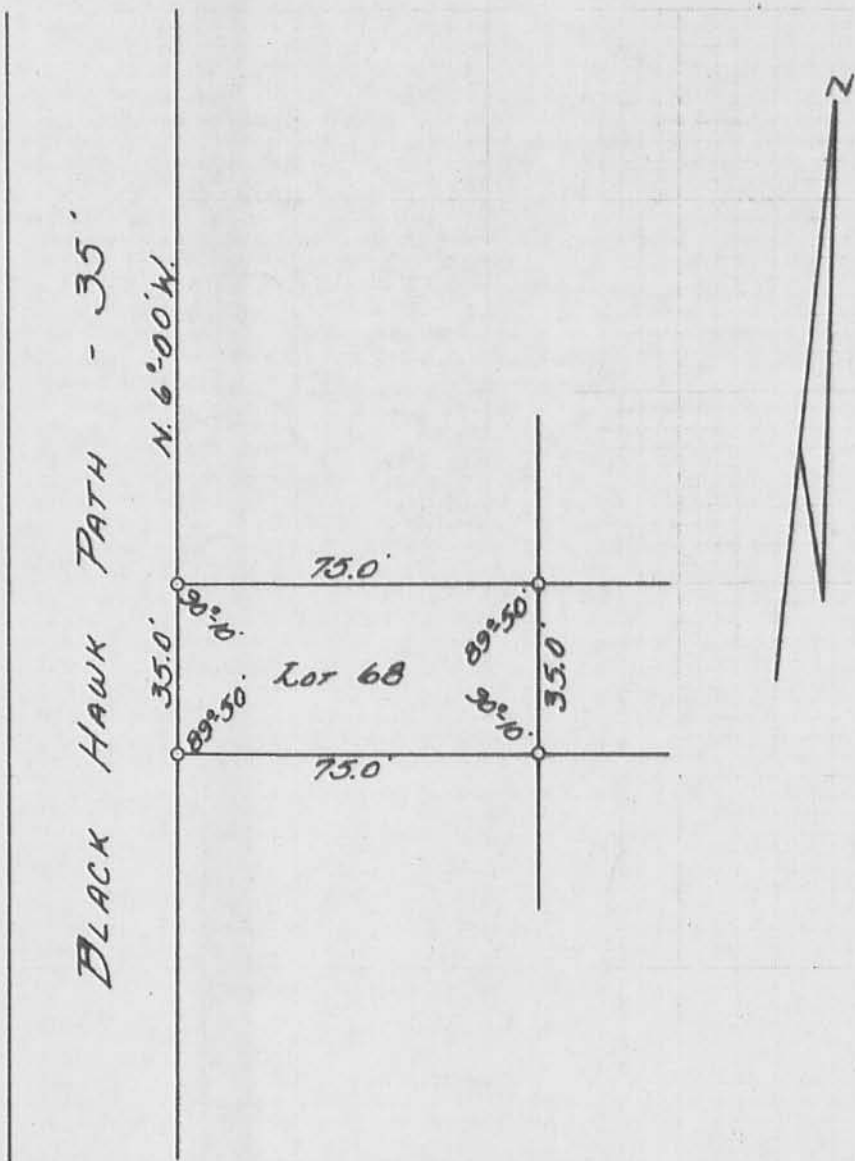
ASH STREET - 35'



SYMBOLS:  
 ○ - 5/8" Rebar Fd.  
 ● - 5/8 x 30 Rebars Set.  
 □ - Harrow Tooth in tree root Set.



Survey of Lots No. 41, 42, 43 and 69, 70, 71. Chippewa Park Allot. No. 1, Stokes Township, Logan County, Ohio.		
SCALE: 1" = 20'	APPROVED BY:	DRAWN BY: DEG
DATE: 10-25-1994		REVISED:
<i>Daniel E. Gilbert</i> Daniel E. Gilbert, P.S. Reg. Sur. No. 5402		DRAWING NUMBER: 094-063



○ -  $\frac{3}{8}$ "  $\phi$  IRON BARS SET.

REFERENCE:  
 CHIPPEWA PARK No. 1.  
 PLAT BOOK B, VOL. 2, PAGE 126-127.

SURVEYED AND PLATTED BY:  
 DANIEL E. GILBERT, P.S.  
 REG. SUR. No. 5402  
 428 N. MADRIVER ST.  
 BELLEFONTAINE, OHIO 43311



LOT No. 68 SURVEY  
 CHIPPEWA PARK No. 1  
 V. M. S. No. 12276  
 STOKES TOWNSHIP 27  
 LOGAN COUNTY, OHIO  
 FEBRUARY 8, 1969

SCALE: 1" = 40'

4521

INDEXED ON MAP